



Designation: **D5397–07 (Reapproved 2012) D5397 – 19**

## Standard Test Method for Evaluation of Stress Crack Resistance of Polyolefin Geomembranes Using Notched Constant Tensile Load Test<sup>1</sup>

This standard is issued under the fixed designation D5397; the number immediately following the designation indicates the year of original adoption or, in the case of revision, the year of last revision. A number in parentheses indicates the year of last reapproval. A superscript epsilon ( $\epsilon$ ) indicates an editorial change since the last revision or reapproval.

### 1. Scope

1.1 This test method is used to develop test data from which the susceptibility of polyolefin geomembrane sheet material to stress cracking under a constant tensile load condition and an accelerated environmental condition can be evaluated.

1.2 This test method measures the failure time associated with a given test specimen at a specified tensile load level. Results from a series of such tests utilizing a range of load levels can be used to construct a stress-time plot on a log-log axis.

1.3 The values stated in SI units are to be regarded as the standard. The inch-pound units given in parentheses are provided for information only.

1.4 *This standard does not purport to address all of the safety concerns, if any, associated with its use. It is the responsibility of the user of this standard to establish appropriate safety, health, and environmental practices and determine the applicability of regulatory limitations prior to use.*

1.5 *This international standard was developed in accordance with internationally recognized principles on standardization established in the Decision on Principles for the Development of International Standards, Guides and Recommendations issued by the World Trade Organization Technical Barriers to Trade (TBT) Committee.*

### 2. Referenced Documents

2.1 ASTM Standards:<sup>2</sup>

[D638 Test Method for Tensile Properties of Plastics](#)

[D883 Terminology Relating to Plastics](#)

[D4354 Practice for Sampling of Geosynthetics and Rolled Erosion Control Products \(RECPs\) for Testing](#)

[D4439 Terminology for Geosynthetics](#)

[D4703 Practice for Compression Molding Thermoplastic Materials into Test Specimens, Plaques, or Sheets](#)

[D4833/D5199 Test Method for Index Puncture Resistance of Geomembranes and Related Products Measuring the Nominal Thickness of Geosynthetics](#)

[D6693/D6693M Test Method for Determining Tensile Properties of Nonreinforced Polyethylene and Nonreinforced Flexible Polypropylene Geomembranes](#)

### 3. Terminology

3.1 Definitions:

3.1.1 *actual thickness, n*—individual measurement per Test Method [D5199](#), on a specimen tab.

3.1.2 *average thickness, n*—result of Test Method [D5199](#) testing, that is, average of ten specimens.

3.1.3 *geomembrane, n*—very low permeability synthetic membrane liners or barriers used with any geotechnical engineering related engineering-related material so as to control fluid migration in a man-made project, structure, or system (see Test Method system [D4833](#)).

3.1.4 *ligament, n*—the portion of geomembrane that remains uncut under the notch.

3.1.5 *ligament thickness, n*—length of the ligament measured from the bottom of the notch to the edge of the specimen in a direction perpendicular to the plane of the test specimen.

<sup>1</sup> This test method is under the jurisdiction of ASTM Committee [D35](#) on Geosynthetics and is the direct responsibility of Subcommittee [D35.02](#) on Endurance Properties. Current edition approved July 1, 2012; Jan. 1, 2019. Published July 2012; January 2019. Originally approved in 1993. Last previous edition approved in 2007 as [D5397–07](#); [D5397–07 \(2012\)](#). DOI: [10.1520/D5397-07R12](#); [10.1520/D5397-19](#).

<sup>2</sup> For referenced ASTM standards, visit the ASTM website, [www.astm.org](#), or contact ASTM Customer Service at [service@astm.org](#). For *Annual Book of ASTM Standards* volume information, refer to the standard's Document Summary page on the ASTM website.

3.1.6 multi-component geomembrane, n—a geomembrane that includes multiple layers of different nature.

3.1.7 nominal thickness, n—the thickness specified without regard of tolerance.

3.1.8 notch, n—cut made using a specified tool in prescribed conditions.

3.1.9 slow crack growth, n—type of fracture mechanism characterized by the stable growth of a crack with little deformation in the material.

3.1.10 smooth geomembrane, n—a geomembrane that does not present any surface texture.

3.1.10.1 Discussion—

A geomembrane can be smooth on one side but textured on the other side.

3.1.11 stress crack, n—an external or internal crack in a plastic caused by tensile stresses less than its short-time mechanical strength (see Definitions Terminology D883).

3.1.11.1 Discussion—

The development of such cracks is frequently accelerated by the environment to which the plastic is exposed. The stresses that cause cracking may be present internally or externally or may be combinations of these stresses.

3.2 For definitions of other terms relating to geotextiles and geomembranes used in this standard, refer to Terminology D4439.

#### 4. Summary of Test Method

4.1 This test method consists of subjecting a ~~dumbbell-shaped~~ dumbbell-shaped notched test specimen from a polyolefin sheet to a constant tensile load in the presence of a surface-active agent and at an elevated temperature. The time to failure of the test specimen is recorded. The results of a series of such tests conducted at different stress levels are presented by plotting stress level against failure time for each stress level on a log-log axis.

#### 5. Significance and Use

5.1 This test method does not purport to interpret the resulting response curve. Such interpretation is left to the parties involved in the commissioning and reporting of the test results.

5.2 This test method is intended as an index test and may be used for grading polyolefin geomembrane sheets in regard to their stress-cracking ~~stress-cracking~~ sensitivity.

5.2.1 Conditions that can affect stress cracking include: level of loading, test temperature and environment, microstructure, polymer additive package, processing history, and thermal history.

5.3 The test method is applicable to smooth, homogeneous polyolefin geomembranes where the two sides are parallel to permit application of the stress on a well-defined surface delimited by the surface of the geomembrane on one side, and the bottom of the notch on the other side.

5.4 The test is applicable to textured geomembranes when prepared as described in 8.3.2.

5.5 The test may be applicable to multi-component geomembranes (such as white, conductive, or other non-homogeneous sheets) or limited to the evaluation of the base polymer when prepared as described in 8.3.3.

5.6 The test is not applicable to bituminous, EPDM, plasticized PVC, and other non-polyolefin geomembranes, as these materials are not susceptible to slow crack growth.

5.7 This test method may not be applied to polyolefin geomembranes that do not exhibit a well-defined yield point, such as some VLDPE and LLDPE.

#### 6. Apparatus

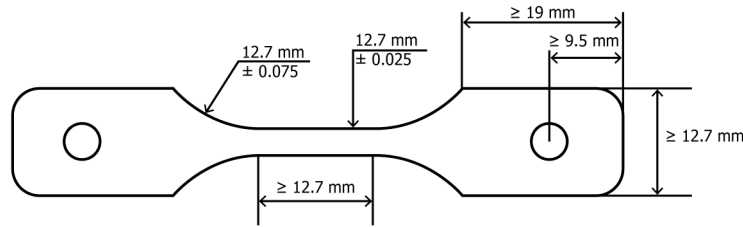
6.1 Blanking Die—A die suitable for cutting test specimens to the dimensions and tolerances shown in Fig. 1.

NOTE 1—The length of the specimen can be changed to suit the design of the test apparatus. However, there should be a constant neck section with length at least  $\pm 12.7$  mm (0.5 in.) long. The width should be  $3.20$  mm (0.125 in.)  $\pm 0.025$  mm.

6.2 Notching Device—A device or machine that can produce a consistent notch depth.

NOTE 2—An evaluation of the notching technique can be performed by quenching a notched specimen in liquid nitrogen and then fracturing it. The notch depth can readily be measured by examining the fracture surface under a reflected light microscope. Other methods of verifying notch depth include viewing the cut specimen on its side in a microscope with the aid of an eyepiece micrometer or a calibrated reticle.

6.3 Blade—A single-edged razor made of carbon steel. The tip profile is that of an arrow rather than that of a chisel point. The sharpness of the point is critical to the cleanliness of the cut, which ~~effects~~ affects the results of the test significantly.



NOTE 1—Dimensions in millimetres to an accuracy of 0.025 mm unless otherwise indicated.

FIG. 1 Dimensions of Test Method D1822 Type “L” Test Specimens

6.4 ~~Stress-Cracking~~ *Stress-Cracking Apparatus*—Equipment suitable for subjecting test specimens to a tensile stress of up to 13.8 MPa (2000 lb/in.<sup>2</sup>). The specimens shall be maintained at a constant temperature of  $50 \pm 1^\circ\text{C}$  ( $122 \pm 2^\circ\text{F}$ ) while being totally immersed in a surface-active agent. The solution should be constantly agitated to provide a uniform concentration throughout the bath.

NOTE 3—The apparatus shown in Fig. 2 is one type that has been used and is capable of testing up to 20 specimens at a time. This equipment uses a lever system with a mechanical advantage (MA) of three to impose the desired loading on each specimen. The surface-active agent in which the specimens are immersed is contained in an open stainless steel tank. A submersion heater and controller are used to maintain the test temperature. A pump keeps the liquid in a constant state of agitation. A timing clock for each test specimen is also provided to record automatically the failure time of the test specimens to the nearest 0.1 h.

NOTE 4—If “on/off” switches are used to control the timing clock, the switch must be sensitive enough to be turned off under 200 g of the force.

## 7. Reagent

7.1 The reagent should consist of 10 % surface-active agent with 90 % deionized water. The surface-active agent is Igepal CO-630<sup>3</sup> that is nonylphenoxy poly(ethyleneoxy)ethanol. The reagent should be stored in a closed container. The reagent in the bath should be replaced every two weeks to maintain a constant concentration.

NOTE 5—In case of dispute, the pH of the water should be distilled or deionized at the discretion of the parties involved. The reagent may also be monitored throughout the duration of the test, and the solution replaced when a change in pH is detected. Without evidence of the chemical stability of the solution, the solution must be replaced every two weeks.

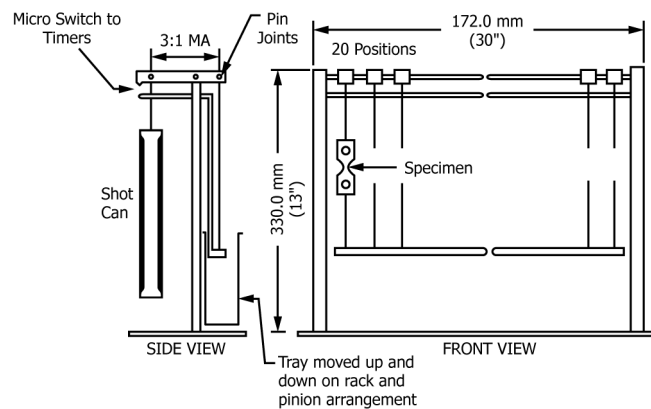
NOTE 6—Other incubation solutions may also be used in the test, provided that the parties involved mutually agree to the changes and state the specific details in the final report.

## 8. Sampling

8.1 *Lot Sample*—Divide the product into lots and take the lot sample as directed in Practice D4354.

8.2 *Laboratory Sample*—As a laboratory sample for acceptance testing, take a full-width swatch approximately 1 m (40 in.) (40 in.) long in the machine direction from each roll in the lot sample. The sample may be taken from the end portion of a roll, provided there is no evidence it is distorted or different from other portions of the roll.

### 8.3 Selection of the Location Where to Cut the Specimens:



NOTE 1—The number of positions in the test frame is optional.

FIG. 2 Constant Stress Loading Apparatus Consisting of Twenty (20) Specimen Test Positions

<sup>3</sup> Igepal CO-630 may be obtained from Rhone-Poulenc, CN 7500, Prospect Plains Road, Cranbury, NJ 08512-7500.

8.3.1 For smooth geomembranes manufactured with a single polymer formulation, proceed to 8.4.

8.3.2 For textured geomembranes manufactured with a single polymer formulation in all layers, test the smooth edges if available. If the membrane does not have smooth edges, prepare a plaque according to Practice D4703, Procedure C. Proceed to 8.4, considering this plaque as the laboratory sample. Report that the sample was tested as a plaque in addition to the other reporting requirements.

NOTE 7—Results obtained on a sample prepared from the actual geomembrane sheet (that is, as per 8.3.1) may differ from those obtained on the same sample, but using specimens cut out from a plaque prepared using Practice D4703, Procedure C (that is, as per 8.3.2). Caution is required when analyzing the results and comparing products.

8.3.3 For other types of geomembrane, refer to Appendix X2 for specific guidance.

8.4 Test Specimens—At least thirty~~30~~ test specimens are cut from each swatch in the laboratory sample. For each set of tests, all specimens must be taken from one direction.

NOTE 8—Quite often the test is required to challenge the weakest direction of the sheet material. If this is the cross machine direction, the test specimens should be cut in this direction. If not specified, the cross-machine direction shall be tested. When testing the cross direction, specimens are oriented in that direction. Hence the notch is placed in the machine direction so that the specimens are stressed in the desired cross-machine-cross-machine direction.

NOTE 9—It has been found that inserting a grommet or eyelet in the two holes at the end tabs of the test specimen helps to reduce the number of “grip failures” or failures occurring outside of the neck section of the specimen.

9. Procedure

9.1 Measure the thickness per Test Method D5199 of each individual test specimen at its minimum cross section to the nearest 0.0130,025 mm (0.001 in.)-(0.001 in.). The variation in thickness should not be greater than ±0.026 mm (±0.002 in.) ±5 % of the nominal average thickness of the laboratory sample of geomembrane.

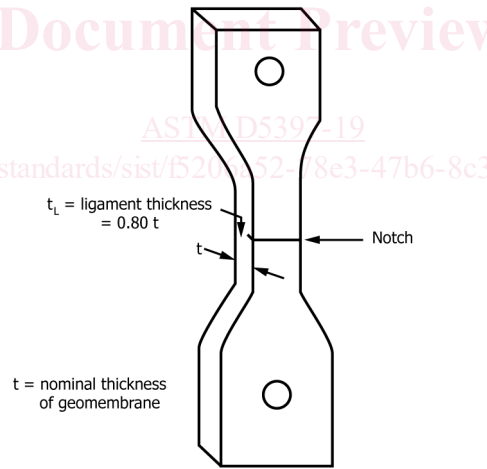
9.2 Cut into each specimen a control imperfection (notch) on one surface as shown in Fig. 3. The depth of the notch should produce a ligament thickness of 80 % ± 1 % of the nominal thickness of the specimen-laboratory sample.

NOTE 10—Using this procedure, the actual notch depth will vary in accordance with the actual thickness of the test specimen. For example, a sheet of nominal thickness of 2 mm (80 mil) might have thicknesses ranging from 1.98 to 2.08 mm (78 to 82 mil). To obtain a constant ligament thickness of 1.61,62 mm (64 mil), the notch depth would vary from 0.36 to 0.46 mm (14 to 18 mil), depending upon the actual thickness of the individual test specimens.

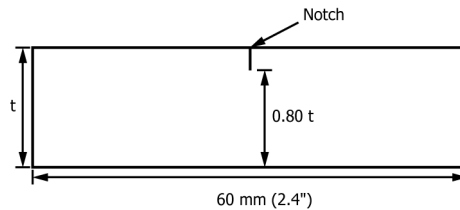
(https://standards.iteh.ai)  
Document Preview

ASTM D5397-19

https://standards.iteh.ai/catalog/standards/sist/f526452478e3-47b6-8c39-8f2feba4f600/astm-d5397-19



Front View of the Cut Test Specimen



Side View of the Test Specimen

FIG. 3 Front and Side Views of the Notched Test Specimen of NCTL Test