

# INTERNATIONAL STANDARD

# NORME INTERNATIONALE



**Electric motor-operated hand-held tools, transportable tools and lawn  
and garden machinery – Safety –  
Part 3-9: Particular requirements for transportable mitre saws**

**Outils électroportatifs à moteur, outils portables et machines pour jardins  
et pelouses – Sécurité –  
Partie 3-9: Exigences particulières pour les scies à onglets transportables**



## THIS PUBLICATION IS COPYRIGHT PROTECTED

Copyright © 2020 IEC, Geneva, Switzerland

All rights reserved. Unless otherwise specified, no part of this publication may be reproduced or utilized in any form or by any means, electronic or mechanical, including photocopying and microfilm, without permission in writing from either IEC or IEC's member National Committee in the country of the requester. If you have any questions about IEC copyright or have an enquiry about obtaining additional rights to this publication, please contact the address below or your local IEC member National Committee for further information.

Droits de reproduction réservés. Sauf indication contraire, aucune partie de cette publication ne peut être reproduite ni utilisée sous quelque forme que ce soit et par aucun procédé, électronique ou mécanique, y compris la photocopie et les microfilms, sans l'accord écrit de l'IEC ou du Comité national de l'IEC du pays du demandeur. Si vous avez des questions sur le copyright de l'IEC ou si vous désirez obtenir des droits supplémentaires sur cette publication, utilisez les coordonnées ci-après ou contactez le Comité national de l'IEC de votre pays de résidence.

IEC Central Office  
3, rue de Varembe  
CH-1211 Geneva 20  
Switzerland

Tel.: +41 22 919 02 11  
[info@iec.ch](mailto:info@iec.ch)  
[www.iec.ch](http://www.iec.ch)

### About the IEC

The International Electrotechnical Commission (IEC) is the leading global organization that prepares and publishes International Standards for all electrical, electronic and related technologies.

### About IEC publications

The technical content of IEC publications is kept under constant review by the IEC. Please make sure that you have the latest edition, a corrigendum or an amendment might have been published.

#### IEC publications search - [webstore.iec.ch/advsearchform](http://webstore.iec.ch/advsearchform)

The advanced search enables to find IEC publications by a variety of criteria (reference number, text, technical committee,...). It also gives information on projects, replaced and withdrawn publications.

#### IEC Just Published - [webstore.iec.ch/justpublished](http://webstore.iec.ch/justpublished)

Stay up to date on all new IEC publications. Just Published details all new publications released. Available online and once a month by email.

#### IEC Customer Service Centre - [webstore.iec.ch/csc](http://webstore.iec.ch/csc)

If you wish to give us your feedback on this publication or need further assistance, please contact the Customer Service Centre: [sales@iec.ch](mailto:sales@iec.ch).

#### Electropedia - [www.electropedia.org](http://www.electropedia.org)

The world's leading online dictionary on electrotechnology, containing more than 22,000 terminological entries in English and French, with equivalent terms in 16 additional languages. Also known as the International Electrotechnical Vocabulary (IEV) online.

#### IEC Glossary - [std.iec.ch/glossary](http://std.iec.ch/glossary)

67,000 electrotechnical terminology entries in English and French extracted from the Terms and Definitions clause of IEC publications issued since 2002. Some entries have been collected from earlier publications of IEC TC 37, 77, 86 and CISPR.

### A propos de l'IEC

La Commission Electrotechnique Internationale (IEC) est la première organisation mondiale qui élabore et publie des Normes internationales pour tout ce qui a trait à l'électricité, à l'électronique et aux technologies apparentées.

### A propos des publications IEC

Le contenu technique des publications IEC est constamment revu. Veuillez vous assurer que vous possédez l'édition la plus récente, un corrigendum ou amendement peut avoir été publié.

#### Recherche de publications IEC -

[webstore.iec.ch/advsearchform](http://webstore.iec.ch/advsearchform)

La recherche avancée permet de trouver des publications IEC en utilisant différents critères (numéro de référence, texte, comité d'études,...). Elle donne aussi des informations sur les projets et les publications remplacées ou retirées.

#### IEC Just Published - [webstore.iec.ch/justpublished](http://webstore.iec.ch/justpublished)

Restez informé sur les nouvelles publications IEC. Just Published détaille les nouvelles publications parues. Disponible en ligne et une fois par mois par email.

#### Service Clients - [webstore.iec.ch/csc](http://webstore.iec.ch/csc)

Si vous désirez nous donner des commentaires sur cette publication ou si vous avez des questions contactez-nous: [sales@iec.ch](mailto:sales@iec.ch).

#### Electropedia - [www.electropedia.org](http://www.electropedia.org)

Le premier dictionnaire d'électrotechnologie en ligne au monde, avec plus de 22 000 articles terminologiques en anglais et en français, ainsi que les termes équivalents dans 16 langues additionnelles. Egalement appelé Vocabulaire Electrotechnique International (IEV) en ligne.

#### Glossaire IEC - [std.iec.ch/glossary](http://std.iec.ch/glossary)

67 000 entrées terminologiques électrotechniques, en anglais et en français, extraites des articles Termes et Définitions des publications IEC parues depuis 2002. Plus certaines entrées antérieures extraites des publications des CE 37, 77, 86 et CISPR de l'IEC.

# INTERNATIONAL STANDARD

# NORME INTERNATIONALE



**Electric motor-operated hand-held tools, transportable tools and lawn  
and garden machinery – Safety –  
Part 3-9: Particular requirements for transportable mitre saws**

**Outils électroportatifs à moteur, outils portables et machines pour jardins  
et pelouses – Sécurité –  
Partie 3-9: Exigences particulières pour les scies à onglets transportables**

INTERNATIONAL  
ELECTROTECHNICAL  
COMMISSION

COMMISSION  
ELECTROTECHNIQUE  
INTERNATIONALE

ICS 25.140.20

ISBN 978-2-8322-7801-7

**Warning! Make sure that you obtained this publication from an authorized distributor.  
Attention! Veuillez vous assurer que vous avez obtenu cette publication via un distributeur agréé.**

## CONTENTS

FOREWORD .....	4
1 Scope .....	6
2 Normative references .....	6
3 Terms and definitions .....	6
4 General requirements .....	11
5 General conditions for the tests .....	11
6 Radiation, toxicity and similar hazards .....	11
7 Classification .....	11
8 Marking and instructions .....	11
9 Protection against access to live parts .....	14
10 Starting .....	14
11 Input and current .....	14
12 Heating .....	15
13 Resistance to heat and fire .....	15
14 Moisture resistance .....	15
15 Resistance to rusting .....	15
16 Overload protection of transformers and associated circuits .....	15
17 Endurance .....	15
18 Abnormal operation .....	15
19 Mechanical hazards .....	16
20 Mechanical strength .....	22
21 Construction .....	24
22 Internal wiring .....	31
23 Components .....	31
24 Supply connection and external flexible cords .....	31
25 Terminals for external conductors .....	32
26 Provision for earthing .....	32
27 Screws and connections .....	32
28 Creepage distances, clearances and distances through insulation .....	32
Annexes .....	33
Annex I (informative) Measurement of noise and vibration emissions .....	33
Annex K (normative) Battery tools and battery packs .....	34
Annex L (normative) Battery tools and battery packs provided with mains connection or non-isolated sources .....	35
Bibliography .....	36
Figure 101 – Mitre saw with centre workpiece support .....	7
Figure 102 – Mitre saw .....	9
Figure 103 – Saw blade quadrants .....	10
Figure 104 – Open guard construction .....	18
Figure 105 – Position of saw blade and lower guard relative to saw table .....	19

Figure 106 – Test probe.....	20
Figure 107 – Application of test probe.....	20
Figure 108 – Workpiece support dimensions.....	26
Figure 109 – Minimum extension of fence.....	28
Figure 110 – Distance between fence and saw blade.....	29
Figure 111 – Flange characteristics.....	31
Table 4 – Required performance levels.....	15
Table I.101 – Noise test conditions for mitre saws.....	33

## **iTeh STANDARD PREVIEW** **(standards.iteh.ai)**

[IEC 62841-3-9:2020](https://standards.iteh.ai/catalog/standards/sist/c6007c73-c698-4536-8cb9-26aa41181e90/iec-62841-3-9-2020)

<https://standards.iteh.ai/catalog/standards/sist/c6007c73-c698-4536-8cb9-26aa41181e90/iec-62841-3-9-2020>

# INTERNATIONAL ELECTROTECHNICAL COMMISSION

## ELECTRIC MOTOR-OPERATED HAND-HELD TOOLS, TRANSPORTABLE TOOLS AND LAWN AND GARDEN MACHINERY – SAFETY –

### Part 3-9: Particular requirements for transportable mitre saws

#### FOREWORD

- 1) The International Electrotechnical Commission (IEC) is a worldwide organization for standardization comprising all national electrotechnical committees (IEC National Committees). The object of IEC is to promote international co-operation on all questions concerning standardization in the electrical and electronic fields. To this end and in addition to other activities, IEC publishes International Standards, Technical Specifications, Technical Reports, Publicly Available Specifications (PAS) and Guides (hereafter referred to as “IEC Publication(s)”). Their preparation is entrusted to technical committees; any IEC National Committee interested in the subject dealt with may participate in this preparatory work. International, governmental and non-governmental organizations liaising with the IEC also participate in this preparation. IEC collaborates closely with the International Organization for Standardization (ISO) in accordance with conditions determined by agreement between the two organizations.
- 2) The formal decisions or agreements of IEC on technical matters express, as nearly as possible, an international consensus of opinion on the relevant subjects since each technical committee has representation from all interested IEC National Committees.
- 3) IEC Publications have the form of recommendations for international use and are accepted by IEC National Committees in that sense. While all reasonable efforts are made to ensure that the technical content of IEC Publications is accurate, IEC cannot be held responsible for the way in which they are used or for any misinterpretation by any end user.
- 4) In order to promote international uniformity, IEC National Committees undertake to apply IEC Publications transparently to the maximum extent possible in their national and regional publications. Any divergence between any IEC Publication and the corresponding national or regional publication shall be clearly indicated in the latter.
- 5) IEC itself does not provide any attestation of conformity. Independent certification bodies provide conformity assessment services and, in some areas, access to IEC marks of conformity. IEC is not responsible for any services carried out by independent certification bodies.
- 6) All users should ensure that they have the latest edition of this publication.
- 7) No liability shall attach to IEC or its directors, employees, servants or agents including individual experts and members of its technical committees and IEC National Committees for any personal injury, property damage or other damage of any nature whatsoever, whether direct or indirect, or for costs (including legal fees) and expenses arising out of the publication, use of, or reliance upon, this IEC Publication or any other IEC Publications.
- 8) Attention is drawn to the Normative references cited in this publication. Use of the referenced publications is indispensable for the correct application of this publication.
- 9) Attention is drawn to the possibility that some of the elements of this IEC Publication may be the subject of patent rights. IEC shall not be held responsible for identifying any or all such patent rights.

International Standard IEC 62841-3-9 has been prepared by IEC technical committee 116: Safety of motor-operated electric tools.

This second edition cancels and replaces the first edition published in 2014. This edition constitutes a technical revision.

This edition includes the following significant technical changes with respect to the previous edition:

- a) Clause 1: Scope: increase of the maximum saw blade diameter to 410 mm;
- b) Corrigendum 1 and Corrigendum 2 of the first edition have been incorporated in this second edition.

The text of this International Standard is based on the following documents:

FDIS	Report on voting
116/430/FDIS	116/442/RVD

Full information on the voting for the approval of this International Standard can be found in the report on voting indicated in the above table.

This publication has been drafted in accordance with the ISO/IEC Directives, Part 2.

This Part 3-9 is to be used in conjunction with the IEC 62841-1:2014.

This Part 3-9 supplements or modifies the corresponding clauses in IEC 62841-1, so as to convert it into the IEC Standard: Particular requirements for transportable mitre saws.

Where a particular subclause of Part 1 is not mentioned in this Part 3-9, that subclause applies as far as reasonable. Where this standard states “addition”, “modification” or “replacement”, the relevant text in Part 1 is to be adapted accordingly.

The following print types are used:

- requirements: in roman type;
- *test specifications*: in italic type;
- notes: in small roman type.

The terms defined in Clause 3 are printed in **bold typeface**.

Subclauses, notes and figures which are additional to those in Part 1 are numbered starting from 101.

A list of all parts of the IEC 62841 series, under the general title: *Electric motor-operated hand-held tools, transportable tools and lawn and garden machinery – Safety*, can be found on the IEC website.

The committee has decided that the contents of this publication will remain unchanged until the stability date indicated on the IEC web site under "http://webstore.iec.ch" in the data related to the specific publication. At this date, the publication will be

- reconfirmed,
- withdrawn,
- replaced by a revised edition, or
- amended.

NOTE The attention of National Committees is drawn to the fact that equipment manufacturers and testing organizations may need a transitional period following publication of a new, amended or revised IEC publication in which to make products in accordance with the new requirements and to equip themselves for conducting new or revised tests.

It is the recommendation of the committee that the content of this publication be adopted for implementation nationally not earlier than 36 months from the date of publication.

**IMPORTANT – The 'colour inside' logo on the cover page of this publication indicates that it contains colours which are considered to be useful for the correct understanding of its contents. Users should therefore print this document using a colour printer.**

# ELECTRIC MOTOR-OPERATED HAND-HELD TOOLS, TRANSPORTABLE TOOLS AND LAWN AND GARDEN MACHINERY – SAFETY –

## Part 3-9: Particular requirements for transportable mitre saws

### 1 Scope

This clause of Part 1 is applicable, except as follows:

*Addition:*

This part of IEC 62841 applies to transportable **mitre saws** intended to be used with a toothed saw blade for cutting wood and analogous materials, plastics and nonferrous metals except magnesium with a saw blade diameter not exceeding 410 mm, which hereinafter might simply be referred to as saw or tool.

This International Standard does not apply to **mitre saws** intended to cut other metals, such as magnesium, steel and iron. This document does not apply to **mitre saws** with an automatic feeding device.

NOTE 101 Transportable saws intended to cut ferrous metals will be covered by a future part of IEC 62841-3.

This document does not apply to saws designed for use with abrasive wheels.

NOTE 102 **Transportable tools** designed for use with abrasive wheels are covered by IEC 62841-3-10.

This document does not apply to tools combining the function of a **mitre saw** with the function of a table saw.

NOTE 103 **Transportable tools** combining the function of a **mitre saw** with the function of a table saw are covered by a future part of IEC 62841-3.

### 2 Normative references

This clause of Part 1 is applicable, except as follows:

*Addition:*

ISO 180, *Plastics – Determination of Izod impact strength*

### 3 Terms and definitions

This clause of Part 1 is applicable, except as follows:

#### 3.101

##### **bevel angle**

angular displacement of the saw blade plane with respect to the **table top** plane, the position of the saw blade plane that is perpendicular to the **table top** being the 0° bevel position

#### 3.102

##### **compound angle**

angular displacement of the saw blade plane having a **bevel** and **mitre angle** other than 0°



**3.103****cutting edge zone**

outer 20 % of the radius of the saw blade

**3.104****D**

specified diameter of the saw blade

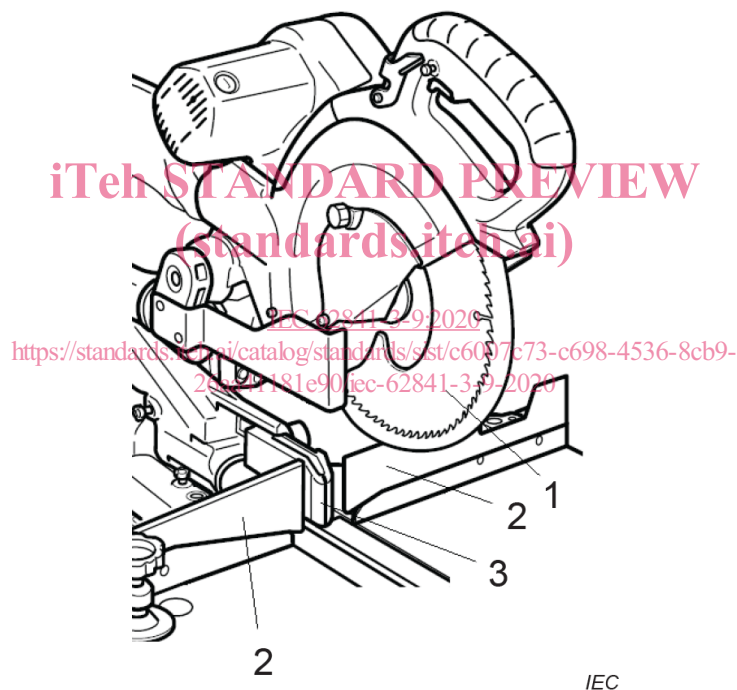
**3.105****fence**

device to position the workpiece and absorb the horizontal forces from the saw blade during the cutting process

**3.105.1****centre workpiece support**

device that has a face supporting the workpiece in conjunction with the **fence**

Note 1 to entry: See Figure 101.

**Key**

- 1 saw blade
- 2 fences
- 3 centre workpiece support

**Figure 101 – Mitre saw with centre workpiece support**

**3.106****fully down position**

position of the **saw unit** after adjustment of the saw in accordance with 8.14.2 a) 107) and any depth-of-cut stop as in 8.14.2 a) 108) disengaged or adjusted in order to produce the lowest position of the **saw unit**

**3.107****horizontal cutting capacity**

largest dimension perpendicular from the plane of the **fence** (width) of a workpiece with rectangular cross section that can be completely cut through with a single pass of the saw blade

Note 1 to entry: Subclause 5.101 provides a measurement procedure for **horizontal cutting capacity**.

**3.108****kerf width**

distance between two parallel planes that are touching the opposing sides of at least three saw blade tooth tips

**3.109****kerf plate**

portion of the **table top** on both sides of the saw blade intersect line with the **table top** for the purpose of minimizing the tearing of the wood fibres by the saw blade

Note 1 to entry: Depending on the design, the **kerf plate** is adjustable, replaceable or an integral part of the **table top**.

**3.110****mitre angle**

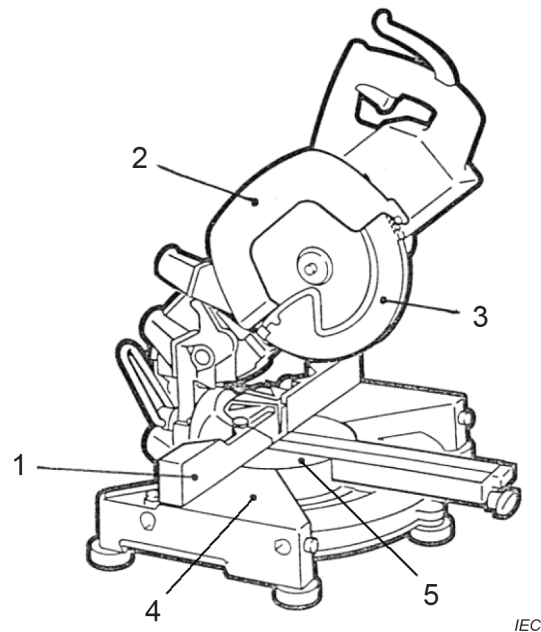
angular displacement of the plane of the **fence** with respect to the cutting line, the position of the saw blade plane that is perpendicular to the plane of the **fence** being the 0° mitre position

**3.111****mitre saw**

saw consisting of a **table top** and a **fence** which support and position the workpiece, and a **saw unit**, projecting over the **table top**

<https://standards.iteh.ai/catalog/standards/sist/c6007c73-c698-4536-8cb9-30a4111e6709/iec-62841-3-9-2020>

Note 1 to entry: Cutting is achieved by moving the **saw unit** through a plunging action or a combination of plunging and sliding actions. The workpiece does not move with respect to the **table top** or **fence** during cutting. The **saw unit** can be adjustable to cut at a **bevel angle**, a **mitre angle** or both angles to create a **compound angle** cut. See Figure 102.



IEC

**Key**

- 1 **fence**
- 2 **upper guard**
- 3 **lower guard**
- 4 **table base**
- 5 **turn table**

## iTeh STANDARD PREVIEW (standards.iteh.ai)

[IEC 62841-3-9:2020](https://standards.iteh.ai/catalog/standards/sist/c6007c73-c698-4536-8cb9-26aa41181e90/iec-62841-3-9-2020)

<https://standards.iteh.ai/catalog/standards/sist/c6007c73-c698-4536-8cb9-26aa41181e90/iec-62841-3-9-2020>

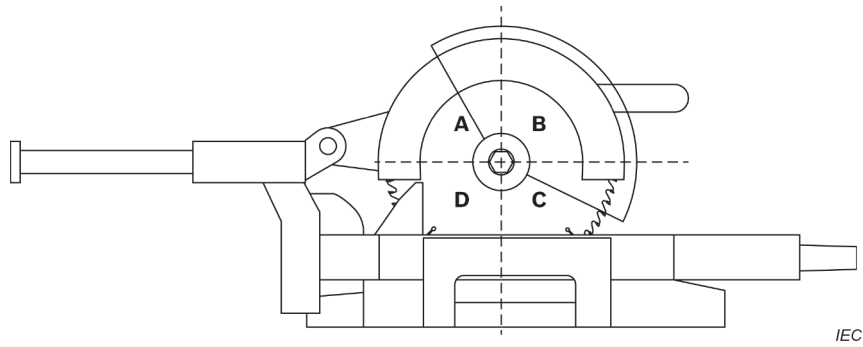
**Figure 102 – Mitre saw**

### 3.112 quadrants

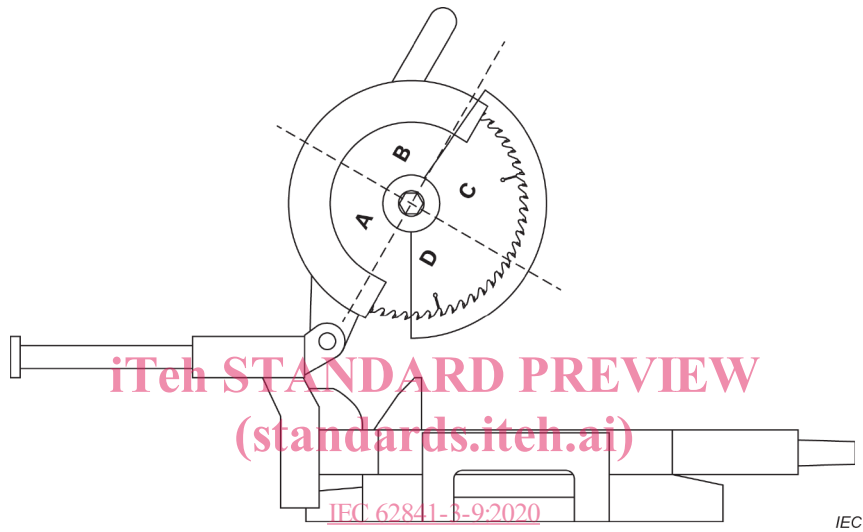
with the **saw unit** in the **fully down position**, parts of the saw blade defined by two lines intersecting the centre of the saw blade, where one line is parallel to the **table top** and the other line is perpendicular to the first line

Note 1 to entry: The **quadrants** remain fixed in relation to the **saw unit** as it moves between the **rest position** and the **fully down position** (see Figure 103):

- **quadrant** “A” is above the line parallel to the **table top** and away from the operator’s position;
- **quadrant** “B” is above the line parallel to the **table top** and closer to the operator’s position;
- **quadrant** “C” is below the line parallel to the **table top** and closer to the operator’s position;
- **quadrant** “D” is below the line parallel to the **table top** and away from the operator’s position.



a) Saw unit in fully down position



b) Saw unit in rest position

Figure 103 – Saw blade quadrants

**3.113  
rest position**

position of a **saw unit** in its uppermost position from the **table top** and, for **mitre saws** with a sliding action, at the maximum sliding position towards the **fence**

**3.114  
saw unit**

device with an affixed saw blade, capable of performing a cutting action

**3.115  
table top**

horizontal surface that is in contact with and supports the workpiece and typically consists of a **turn table**, a table base on each side of the **turn table** and workpiece support extension(s)

Note 1 to entry: See Figure 102.

**3.116  
turn table**

workpiece supporting device that facilitates the **mitre angle** adjustment

**3.117  
vertical cutting capacity**

largest height dimension above the **table top** (thickness) of a workpiece with rectangular cross section having a width dimension equal to the **horizontal cutting capacity**, that can be completely cut through with a single pass of the saw blade

## 4 General requirements

This clause of Part 1 is applicable, except as follows:

**4.101** Throughout the remaining part of this document, unless otherwise explicitly stated, whenever a requirement or a reference is made to

- “saw blade”:  
this shall equally apply to any “saw blade” as specified in accordance with 8.14.2 a);
- “force” as a multiple of **D**:  
the force shall be expressed in newtons (N) and the saw blade diameter **D** shall be expressed in millimetres (mm).

## 5 General conditions for the tests

This clause of Part 1 is applicable, except as follows:

### 5.17 Addition:

*The mass of the tool shall include the fences and required workpiece clamp(s) in accordance with 21.103 and 21.104. Further parts such as carrying means that are required in accordance with the instructions for the safe use of the tool shall be included in the mass.*

### 5.101 Procedure to determine the horizontal cutting capacity

*The mitre saw is fitted with a  $(2 \pm 0,2)$  mm thick steel disc of diameter **D** in place of the saw blade and is set to  $0^\circ$  bevel angle. The saw unit is at its fully down position and, for a mitre saw with a sliding function, the saw unit is at its maximum extended horizontal position from the fence. The mitre saw is set for the mitre angle for which the horizontal cutting capacity measurement is desired.*

#### **Horizontal cutting capacity:**

*The horizontal cutting capacity is the perpendicular distance measured in the plane of the table top from the fence to the intersect point of the steel disc periphery in quadrant “C” with the plane of the table top.*

## 6 Radiation, toxicity and similar hazards

This clause of Part 1 is applicable.

## 7 Classification

This clause of Part 1 is applicable.

## 8 Marking and instructions

This clause of Part 1 is applicable, except as follows:

### 8.1 Addition:

**Mitre saws** shall be marked with:

- **rated no-load speed** of the output spindle.

### 8.3 Addition:

**Mitre saws** shall be marked with the saw blade diameter(s). The marked value(s) shall not be larger than **D** and shall not be less than 0,96 **D**.

**Mitre saws** shall be marked with the direction of rotation of the spindle, indicated in a visible location on the tool in the vicinity of the saw blade, such as on the saw blade **guard**, by an arrow raised or recessed or by any other means no less visible and indelible.

The **table top** on each side of the saw blade shall be marked with a sign as follows:



This symbol needs not be in accordance with the colour requirements of ISO 3864-2.

#### 8.14.1 Addition:

The additional safety instructions as specified in 8.14.1.101 shall be given. This part may be printed separately from the “General Power Tool Safety Warnings”.

##### 8.14.1.101 Safety instructions for mitre saws

- a) **Mitre saws are intended to cut wood or wood-like products, they cannot be used with abrasive cut-off wheels for cutting ferrous material such as bars, rods, studs, etc. Abrasive dust causes moving parts such as the lower guard to jam. Sparks from abrasive cutting will burn the lower guard, the kerf insert and other plastic parts.**
- b) **Use clamps to support the workpiece whenever possible. If supporting the workpiece by hand, you must always keep your hand at least 100 mm from either side of the saw blade. Do not use this saw to cut pieces that are too small to be securely clamped or held by hand. If your hand is placed too close to the saw blade, there is an increased risk of injury from blade contact.**
- c) **The workpiece must be stationary and clamped or held against both the fence and the table. Do not feed the workpiece into the blade or cut “freehand” in any way. Unrestrained or moving workpieces could be thrown at high speeds, causing injury.**
- d) **Push the saw through the workpiece. Do not pull the saw through the workpiece. To make a cut, raise the saw head and pull it out over the workpiece without cutting, start the motor, press the saw head down and push the saw through the workpiece. Cutting on the pull stroke is likely to cause the saw blade to climb on top of the workpiece and violently throw the blade assembly towards the operator.**

NOTE 1 The above warning is omitted for a simple pivoting arm **mitre saw**.

- e) **Never cross your hand over the intended line of cutting either in front or behind the saw blade. Supporting the workpiece “cross handed” i.e. holding the workpiece to the right of the saw blade with your left hand or vice versa is very dangerous.**
- f) **Do not reach behind the fence with either hand closer than 100 mm from either side of the saw blade, to remove wood scraps, or for any other reason while the blade is spinning. The proximity of the spinning saw blade to your hand may not be obvious and you may be seriously injured.**

- g) **Inspect your workpiece before cutting. If the workpiece is bowed or warped, clamp it with the outside bowed face toward the fence. Always make certain that there is no gap between the workpiece, fence and table along the line of the cut.** *Bent or warped workpieces can twist or shift and may cause binding on the spinning saw blade while cutting. There should be no nails or foreign objects in the workpiece.*
- h) **Do not use the saw until the table is clear of all tools, wood scraps, etc., except for the workpiece.** *Small debris or loose pieces of wood or other objects that contact the revolving blade can be thrown with high speed.*
- i) **Cut only one workpiece at a time.** *Stacked multiple workpieces cannot be adequately clamped or braced and may bind on the blade or shift during cutting.*
- j) **Ensure the mitre saw is mounted or placed on a level, firm work surface before use.** *A level and firm work surface reduces the risk of the mitre saw becoming unstable.*
- k) **Plan your work. Every time you change the bevel or mitre angle setting, make sure the adjustable fence is set correctly to support the workpiece and will not interfere with the blade or the guarding system.** *Without turning the tool “ON” and with no workpiece on the table, move the saw blade through a complete simulated cut to assure there will be no interference or danger of cutting the fence.*

NOTE 2 The phrase “bevel or” does not apply for saws without bevel adjustment.

- l) **Provide adequate support such as table extensions, saw horses, etc. for a workpiece that is wider or longer than the table top.** *Workpieces longer or wider than the mitre saw table can tip if not securely supported. If the cut-off piece or workpiece tips, it can lift the lower guard or be thrown by the spinning blade.*
- m) **Do not use another person as a substitute for a table extension or as additional support.** *Unstable support for the workpiece can cause the blade to bind or the workpiece to shift during the cutting operation pulling you and the helper into the spinning blade.*
- n) **The cut-off piece must not be jammed or pressed by any means against the spinning saw blade.** *If confined, i.e. using length stops, the cut-off piece could get wedged against the blade and thrown violently.*
- o) **Always use a clamp or a fixture designed to properly support round material such as rods or tubing.** *Rods have a tendency to roll while being cut, causing the blade to “bite” and pull the work with your hand into the blade.*
- p) **Let the blade reach full speed before contacting the workpiece.** *This will reduce the risk of the workpiece being thrown.*
- q) **If the workpiece or blade becomes jammed, turn the mitre saw off. Wait for all moving parts to stop and disconnect the plug from the power source and/or remove the battery pack. Then work to free the jammed material.** *Continued sawing with a jammed workpiece could cause loss of control or damage to the mitre saw.*
- r) **After finishing the cut, release the switch, hold the saw head down and wait for the blade to stop before removing the cut-off piece.** *Reaching with your hand near the coasting blade is dangerous.*
- s) **Hold the handle firmly when making an incomplete cut or when releasing the switch before the saw head is completely in the down position.** *The braking action of the saw may cause the saw head to be suddenly pulled downward, causing a risk of injury.*

NOTE 3 The above warning applies only for mitre saws with a brake system.

#### 8.14.2 a)

- 101) Instruction to identify the correct saw blade to be used for the material to be cut;
- 102) Information about cutting capacities;
- 103) Information about maximum **bevel angle** and **mitre angle** settings, as applicable;
- 104) Instruction to use only a saw blade diameter in accordance with the markings on the saw and information about the bore diameter and the maximum **kerf width** of the saw blade;