



Designation: C1558 – 19

Standard Guide for Development of Standard Data Records for Computerization of Thermal Transmission Test Data for Thermal Insulation¹

This standard is issued under the fixed designation C1558; the number immediately following the designation indicates the year of original adoption or, in the case of revision, the year of last revision. A number in parentheses indicates the year of last reapproval. A superscript epsilon (ϵ) indicates an editorial change since the last revision or reapproval.

1. Scope

1.1 This guide provides recommended formats for the recording of thermal transmission test data for thermal insulation and similar materials for inclusion in computerized material property databases. From this information, the database designer is able to construct the database dictionary preparatory for development of a database schema.

1.2 This guide is applicable to thermal transmission test data obtained from standard test methods that cover planar and radial specimen geometries.

1.3 This guide is not intended for thermal transmission data obtained for thermal insulation assemblies or systems (that is, heat transmission coefficients for walls, roofs, ceilings, and floors).

1.4 *This standard does not purport to address all of the safety concerns, if any, associated with its use. It is the responsibility of the user of this standard to establish appropriate safety, health, and environmental practices and determine the applicability of regulatory limitations prior to use.*

1.5 *This international standard was developed in accordance with internationally recognized principles on standardization established in the Decision on Principles for the Development of International Standards, Guides and Recommendations issued by the World Trade Organization Technical Barriers to Trade (TBT) Committee.*

2. Referenced Documents

2.1 *ASTM Standards:*²

C168 Terminology Relating to Thermal Insulation

¹ This guide is under the jurisdiction of ASTM Committee C16 on Thermal Insulation and is the direct responsibility of Subcommittee C16.30 on Thermal Measurement.

Current edition approved March 1, 2019. Published March 2019. Originally approved in 2003. Last previous edition approved in 2016 as C1558 – 16. DOI: 10.1520/C1558-19.

² For referenced ASTM standards, visit the ASTM website, www.astm.org, or contact ASTM Customer Service at service@astm.org. For *Annual Book of ASTM Standards* volume information, refer to the standard's Document Summary page on the ASTM website.

- C177 Test Method for Steady-State Heat Flux Measurements and Thermal Transmission Properties by Means of the Guarded-Hot-Plate Apparatus**
- C195 Specification for Mineral Fiber Thermal Insulating Cement**
- C196 Specification for Expanded or Exfoliated Vermiculite Thermal Insulating Cement**
- C208 Specification for Cellulosic Fiber Insulating Board**
- C335 Test Method for Steady-State Heat Transfer Properties of Pipe Insulation**
- C449/C449M Specification for Mineral Fiber Hydraulic-Setting Thermal Insulating and Finishing Cement**
- C516 Specification for Vermiculite Loose Fill Thermal Insulation**
- C518 Test Method for Steady-State Thermal Transmission Properties by Means of the Heat Flow Meter Apparatus**
- C533 Specification for Calcium Silicate Block and Pipe Thermal Insulation**
- C534 Specification for Preformed Flexible Elastomeric Cellular Thermal Insulation in Sheet and Tubular Form**
- C547 Specification for Mineral Fiber Pipe Insulation**
- C549 Specification for Perlite Loose Fill Insulation**
- C552 Specification for Cellular Glass Thermal Insulation**
- C553 Specification for Mineral Fiber Blanket Thermal Insulation for Commercial and Industrial Applications**
- C578 Specification for Rigid, Cellular Polystyrene Thermal Insulation**
- C592 Specification for Mineral Fiber Blanket Insulation and Blanket-Type Pipe Insulation (Metal-Mesh Covered) (Industrial Type)**
- C610 Specification for Molded Expanded Perlite Block and Pipe Thermal Insulation**
- C612 Specification for Mineral Fiber Block and Board Thermal Insulation**
- C656 Specification for Structural Insulating Board, Calcium Silicate**
- C665 Specification for Mineral-Fiber Blanket Thermal Insulation for Light Frame Construction and Manufactured Housing**
- C726 Specification for Mineral Wool Roof Insulation Board**

C728 Specification for Perlite Thermal Insulation Board
C739 Specification for Cellulosic Fiber Loose-Fill Thermal Insulation
C745 Test Method for Heat Flux Through Evacuated Insulations Using a Guarded Flat Plate Boiloff Calorimeter (Withdrawn 2008)³
C764 Specification for Mineral Fiber Loose-Fill Thermal Insulation
C991 Specification for Flexible Fibrous Glass Insulation for Metal Buildings
C1014 Specification for Spray-Applied Mineral Fiber Thermal and Sound Absorbing Insulation
C1029 Specification for Spray-Applied Rigid Cellular Polyurethane Thermal Insulation
C1044 Practice for Using a Guarded-Hot-Plate Apparatus or Thin-Heater Apparatus in the Single-Sided Mode
C1045 Practice for Calculating Thermal Transmission Properties Under Steady-State Conditions
C1071 Specification for Fibrous Glass Duct Lining Insulation (Thermal and Sound Absorbing Material)
C1086 Specification for Glass Fiber Mechanically Bonded Felt Thermal Insulation
C1114 Test Method for Steady-State Thermal Transmission Properties by Means of the Thin-Heater Apparatus
C1126 Specification for Faced or Unfaced Rigid Cellular Phenolic Thermal Insulation
C1149 Specification for Self-Supported Spray Applied Cellulosic Thermal Insulation
C1289 Specification for Faced Rigid Cellular Polyisocyanurate Thermal Insulation Board
C1290 Specification for Flexible Fibrous Glass Blanket Insulation Used to Externally Insulate HVAC Ducts
C1363 Test Method for Thermal Performance of Building Materials and Envelope Assemblies by Means of a Hot Box Apparatus
C1410 Specification for Cellular Melamine Thermal and Sound-Absorbing Insulation
C1427 Specification for Extruded Preformed Flexible Cellular Polyolefin Thermal Insulation in Sheet and Tubular Form
C1482 Specification for Polyimide Flexible Cellular Thermal and Sound Absorbing Insulation
C1484 Specification for Vacuum Insulation Panels
C1534 Specification for Flexible Polymeric Foam Sheet Insulation Used as a Thermal and Sound Absorbing Liner for Duct Systems
C1594 Specification for Polyimide Rigid Cellular Thermal Insulation
C1631 Specification for Cellular Polypropylene Thermal Insulation (Withdrawn 2011)³
C1676 Specification for Microporous Thermal Insulation
C1685 Specification for Pneumatically Applied High-Temperature Fiber Thermal Insulation for Industrial Applications
C1728 Specification for Flexible Aerogel Insulation

2.2 ISO Standards:

ISO 8301 Thermal Insulation, Determination of Steady-State Thermal Resistance and Related Properties—Heat Flow Meter Apparatus⁴
ISO 8302 Thermal Insulation—Determination of Steady-State Thermal Resistance and Related Properties—Guarded Hot Plate Apparatus⁴
ISO 8497 Thermal Insulation—Determination of Steady-State Thermal Transmission Properties of Thermal Insulation for Circular Pipes⁴
ISO 8990 Thermal Insulation—Determination of Steady-State Thermal Transmission Properties—Calibrated and Guarded Hot Box⁴

3. Terminology

3.1 *Definitions*—For definitions of some terms applicable to this guide, see Terminology **C168**

3.2 *Definitions of Terms Specific to This Standard:*

3.2.1 *class, n*—a major material class, for example, ceramic, insulation, polymer, etc.

3.2.2 *data element, n*—an individual piece of information used to describe a material or to record test results; for example, a variable name or a test parameter.

3.2.2.1 *Discussion*—The term is synonymous with *data item*.

3.2.3 *essential field, n*—a field in a record that shall be completed in order to make the record meaningful in accordance with the pertinent guidelines or standard.

3.2.3.1 *Discussion*—Fields are considered essential if required to make a comparison of property data from different sources meaningful. A comparison of data from different sources where essential information is omitted reduces the value of the comparison.

3.2.4 *field, n*—an elementary unit of a record that contains a data item, a data aggregate, a pointer, or a link.

3.2.5 *field name, n*—a name or code associated with a field and used for identification.

3.2.6 *form, n*—the material form, for example, blanket, board, or roll.

3.2.7 *value set, n*—an open listing of representative acceptable text which is included in a particular field of a record.

4. Significance and Use

4.1 This guide defines the principal elements of information, which are considered important and worth recording and storing permanently in computerized databases. Sufficient information is provided in this guide to enable the user to construct a database structure suitable for the intended application involving thermal insulation. Guidance on the storage of (optional) digital images associated with test data is provided in **Appendix X1**.

4.2 Because of increased activity in building computerized materials databases and to maintain uniformity and ease of data

³ The last approved version of this historical standard is referenced on www.astm.org.

⁴ Available from American National Standards Institute (ANSI), 25 W. 43rd St., 4th Floor, New York, NY 10036, <http://www.ansi.org>.

comparison and interchange, these formats provide for the inclusion of specific elements of thermal transmission test data in databases.

4.3 This guide has no implication on data required for materials production or purchase. Reporting of actual test results shall be as described in the actual materials specification or as agreed upon between the vendor and purchaser.

4.4 The suggested set of units for the recommended standard format given in this guide is SI. This guide, however, does not preclude other sets of units, such as inch-pound (IP).

5. Recording of Test Data

5.1 **Table 1** is a recommended standard format for the computerization of thermal transmission data for thermal insulation materials. The headings for each field are:

5.1.1 *Field Number*—A reference number assigned to an individual data field that has no permanent value and does not become part of the database.

5.1.2 *Field Name and Description*—The complete name of the field, descriptive of the data element of information of interest.

5.1.3 *Data Type*—Type of data to be included in the field, such as the type of number, character text, logical values (yes/no), and date.

5.1.4 *Value Sets or Units*—A listing of the types of information which are included in the field or, in the case of properties or the numeric fields, the SI units in which the numbers are expressed.

5.2 The presentation of the recommended standard format does not require that every element of information be included in every database. There is, however, a minimum number of fields considered essential to any database and these fields are marked with an asterisk (*).

NOTE 1—Many databases are prepared for specific applications and, therefore, some database builders will omit certain elements considered to be of no value for that specific application. Conversely, in some individual cases, additional data elements are needed and the database builder is encouraged to include these elements along with the elements in the recommended standard format. It is important to note that not all of the elements considered essential will be available for every test. Further, not all of the fields included in the recommended standard format are appropriate for all tests.

5.3 The recommended standard format is divided into five sections as illustrated in **Fig. 1**: material identification; microstructure; test method; specimen description; and test results and analysis.

5.4 Fields that indicate the accuracy of each measurement are beyond the scope of this guide. However, the entries in all fields shall be given to the appropriate number of significant figures.

6. Material Identification

6.1 The fields in this section identify the material tested.

NOTE 2—The numbers given in parentheses after the field name refer to the field number in **Table 1** and accompanying tables. Essential fields are identified by an asterisk (*).

6.1.1 *Material Reference Number* (1*) —Unique database identifier containing material and process information for the

specimens. A typical value set contains information from the material lot code (see Field 9).

6.1.2 *Material Class* (2*)—A major material class, for example ceramic, insulation, metal, polymer, rubber, etc.

6.1.3 *Material Name* (3*)—A (generic) name for the particular material. A value set of typical responses is given in **Table 2**.

6.1.4 *Material Description* (4*)—Descriptive name of material tested, for example, E-type fibrous glass with phenolic binder.

6.1.5 *Material Specification* (5)—Specification and year of issue for material name in field (3). A value set of typical responses is given in **Table 2**.

6.1.6 *Material Designation* (6)—Trade name, trademark, brand name, etc., of material.

6.1.7 *Material Manufacturer* (7)—Manufacturer of material.

6.1.8 *Material Source* (8)—Source of material, if different from manufacturer.

6.1.9 *Material Lot Code* (9)—Manufacturer identification (date, plant, etc.).

6.1.10 *Date of Manufacture* (10)—Date of manufacture.

6.1.11 *Material Form* (11)—Functional form of material. A value set of typical responses is given in **Table 2**.

6.1.12 *Material Classification* (12) —ASTM Classification for material, see particular material specification (include year of issue).

7. Microstructure

7.1 The fields in this section pertain to the microstructure of the material and provide information complementary to the test results and analysis given in **10**. The information requested is basic to the characterization of the insulation and is not intended, in this condensed form, for prediction of thermal performance.

7.1.1 *Microstructure Type* (13*)—Composition (cellular, fibrous, particle, etc.).

7.1.2 *Cell Size* (14)—Diameter of cells, if applicable.

7.1.3 *Fiber Size* (15)—Diameter of fibers, if applicable.

7.1.4 *Particle Size* (16)—Diameter of particles, if applicable.

7.1.5 *Blowing Agent* (17)—Name of blowing agent, if applicable.

7.1.6 *Closed-cell Content* (18)—Percentage of closed cells, if applicable.

7.1.7 *Binder Content* (19)—Binder content, if applicable.

7.1.8 *Shot Content* (20)—Shot content, if applicable.

8. Test Method

8.1 The fields in this section describe the test procedure, apparatus, and data collection for a particular test method.

8.1.1 *Test Method* (21*)—ASTM, ISO, or other designation, for example, Test Method **C177** or ISO 8302 (include year of issue, if applicable). A value set of typical responses is included in **Table 3**.

8.1.2 *Test Facility* (22*, 23*, 24*, 25, 26)—Laboratory, city, state, country, and site elevation where the tests were performed.

8.1.3 *Test Operator* (27)—Include as a minimum the operator responsible for the test report.

TABLE 1 Data Format for Computerization of Test Data for Thermal Insulation

Field No.	Field Name and Description	Data Type	Value Sets or Units
Material Identification			
1*	Material reference number	text	
2*	Material class	text	
3*	Material name	text	
4*	Material description	text	
5	Material specification	text	
6	Material designation	text	
7	Material manufacturer	text	
8	Material source	text	
9	Material lot code	text	
10	Date of manufacture	text	
11	Material form	text	
12	Material classification	text	
Microstructure			
13*	Microstructure type	text	
14	Cell size	real	µm
15	Fiber size	real	µm
16	Particle size	real	µm
17	Blowing agent	text	
18	Closed-cell content	real	%
19	Binder content	real	%
20	Shot content	real	%
Test Method			
21*	ASTM, ISO, or other designation	text	
22*	Test facility—laboratory	text	
23*	Test facility—city	text	
24*	Test facility—state	text	
25	Test facility—country	text	
26	Test facility—Site elevation	real	m
27	Test operator	text	
28*	Apparatus type	text	
29*	Apparatus arrangement	text	
30*	Apparatus size—outer dimension	real	m
31*	Apparatus size—inner dimension	real	m
32*	Apparatus meter area—dimension	real	m
33*	Apparatus meter area—dimension	real	m
34*	Apparatus identification	text	
35*	Mode of operation	integer	
36*	Direction of heat flow	text	
37	Emittance	real	(dimensionless)
38	Plate flatness	real	mm
39	Method of plate separation	text	
40	Data collection method	text	
41	Sampling interval	real	s
42	Computer software	text	
Specimen Description			
43	Specimen layout reference	text	
44*	Conditioning temperature	real	K
45*	Conditioning humidity	real	% RH
46*	Conditioning time	real	hours
47	Conditioning environment	text	
48*	Number of test specimens	integer	
49*	Specimen identification	text	
50*	Specimen geometry	text	
51	Specimen length	real	mm
52	Specimen width	real	mm
53	Specimen diameter	real	mm
54	Specimen circumference	real	mm
55*	Specimen thickness	real	mm
56*	Specimen mass	real	kg
57*	Bulk density	real	kg/m ³
58	Porosity	real	(dimensionless)
59	Sub-components	text	
Test Results and Analysis			
60*	Date of test	date	(year, month, day)
61*	Moisture content before testing	real	%
62*	Moisture content after testing	real	%
63*	Hot temperature—average	real	K
64	Hot temperature—standard deviation	real	K
65*	Cold temperature—average	real	K
66	Cold temperature—standard deviation	real	K
67*	Heat flow—average	real	W
68	Heat flow—standard deviation	real	W
69*	Meter area	real	m ²
70*	Specimen test thickness	real	mm

TABLE 1 *Continued*

Field No.	Field Name and Description	Data Type	Value Sets or Units
71	Clamping pressure	real	kPa
72	Mean temperature	real	K
73	Temperature difference	real	K
74*	Ambient temperature—average	real	K
75	Ambient temperature—standard deviation	real	K
76	Ambient humidity—average	real	%
77	Ambient humidity—standard deviation	real	%
78	Ambient barometric pressure—average	real	kPa
79	Ambient barometric pressure—standard deviation	real	kPa
80*	Thermal conductance—average	real	W/(m ² ·K)
81	Thermal conductance—standard deviation	real	W/(m ² ·K)
82*	Thermal resistance—average	real	m ² ·K/W
83	Thermal resistance—standard deviation	real	m ² ·K/W
84	Thermal conductivity—average	real	W/(m·K)
85	Thermal conductivity—standard deviation	real	W/(m·K)
86	Thermal resistivity—average	real	m·K/W
87	Thermal resistivity—standard deviation	real	m·K/W
88*	Is the test valid?	logical	
89*	Standard uncertainty of test result	real	%
90*	Footnotes	text	

* Essential field

8.1.4 *Apparatus Type* (28*)—Differentiate between planar or radial geometry. A value set of typical responses is included in [Table 3](#) and [Fig. 2](#).

8.1.5 *Apparatus Arrangement* (29*) —Provide apparatus arrangement. A value set of typical responses is included in [Table 3](#) and [Fig. 2](#).

8.1.6 *Apparatus Size* (30*, 31*)—Outer dimensions of apparatus. A value set of typical responses is included in [Table 3](#) and [Fig. 2](#).

8.1.7 *Apparatus Meter Size* (32*, 33*) —Dimensions of meter area. A value set of typical responses is included in [Table 3](#) and [Fig. 2](#).

8.1.8 *Apparatus Identification* (34*) —Documentation of apparatus including serial number, for example, line-heat-source guarded-hot-plate apparatus (SN NIST LHS/GHP02).

8.1.9 *Mode of Operation* (35*)—Differentiate between double-sided (2) test or single-sided (1) test (for example, Practice [C1044](#)). A value set of typical responses is included in [Table 4](#).

8.1.10 *Direction of Heat Flow* (36*) —Direction of heat flow through specimens. A value set of typical responses is included in [Table 4](#).

8.1.11 *Emittance* (37)—Total hemispherical or normal emittance value of heat transfer surfaces of apparatus.

8.1.12 *Plate Flatness* (38)—Flatness of plates, if applicable.

8.1.13 *Method of Plate Separation* (39)—Technique used to maintain plate separation between the hot surfaces and cold surfaces, for example spacers.

8.1.14 *Data Collection Method* (40) —Method of data collection, for example manual or computer.

8.1.15 *Sampling Interval* (41)—Sampling interval for data collection.

8.1.16 *Computer Software* (42)—Software and version used for data collection, if applicable.

9. Specimen Description

9.1 The fields in this section describe the preparation, conditioning, and technical information for the test specimens.

The fields in this section are repeated for each test (including multiple temperature tests).

9.1.1 *Specimen Layout Reference* (43) —Reference to cutting plan and location for each specimen when cut from a production run.

9.1.2 *Specimen Conditioning Data* (44*, 45*, 46*, 47)—Provide the conditioning temperature, humidity, elapsed time, and environment prior to test.

9.1.3 *Number of Specimens* (48*)—Number of test specimen(s).

9.1.4 *Specimen Identification* (49*) —Identification number(s) for specimens.

9.1.5 *Specimen Geometry* (50*)—Indicate whether rectangular, pipe, round, or square, specimens.

9.1.6 *Specimen Length, Width* (51, 52)—If rectangular or square specimens, provide length and width.

9.1.7 *Specimen Diameter* (53)—If round specimens, provide diameter.

9.1.8 *Specimen Circumference* (54) —If pipe specimens, provide circumference.

9.1.9 *Specimen Thickness* (55*)—Thickness of specimen.

9.1.10 *Specimen Mass* (56*)—Mass of specimen.

9.1.11 *Bulk Density* (57*)—Determination of bulk density for specimen.

9.1.12 *Porosity* (58)—Determination of porosity for specimen.

9.1.13 *Sub-Components* (59)—Provide generic name(s) for sub-component materials, if present. For example, an all service (pipe) jacket.

10. Test Results and Analysis

10.1 The fields in this section describe the test results and analysis.

10.1.1 *Date of Test* (60*)—Date specimen was tested using the format: year/month/day (YYYYMMDD).

10.1.2 *Moisture Content* (61*, 62*) —Moisture content of specimen before and after testing.

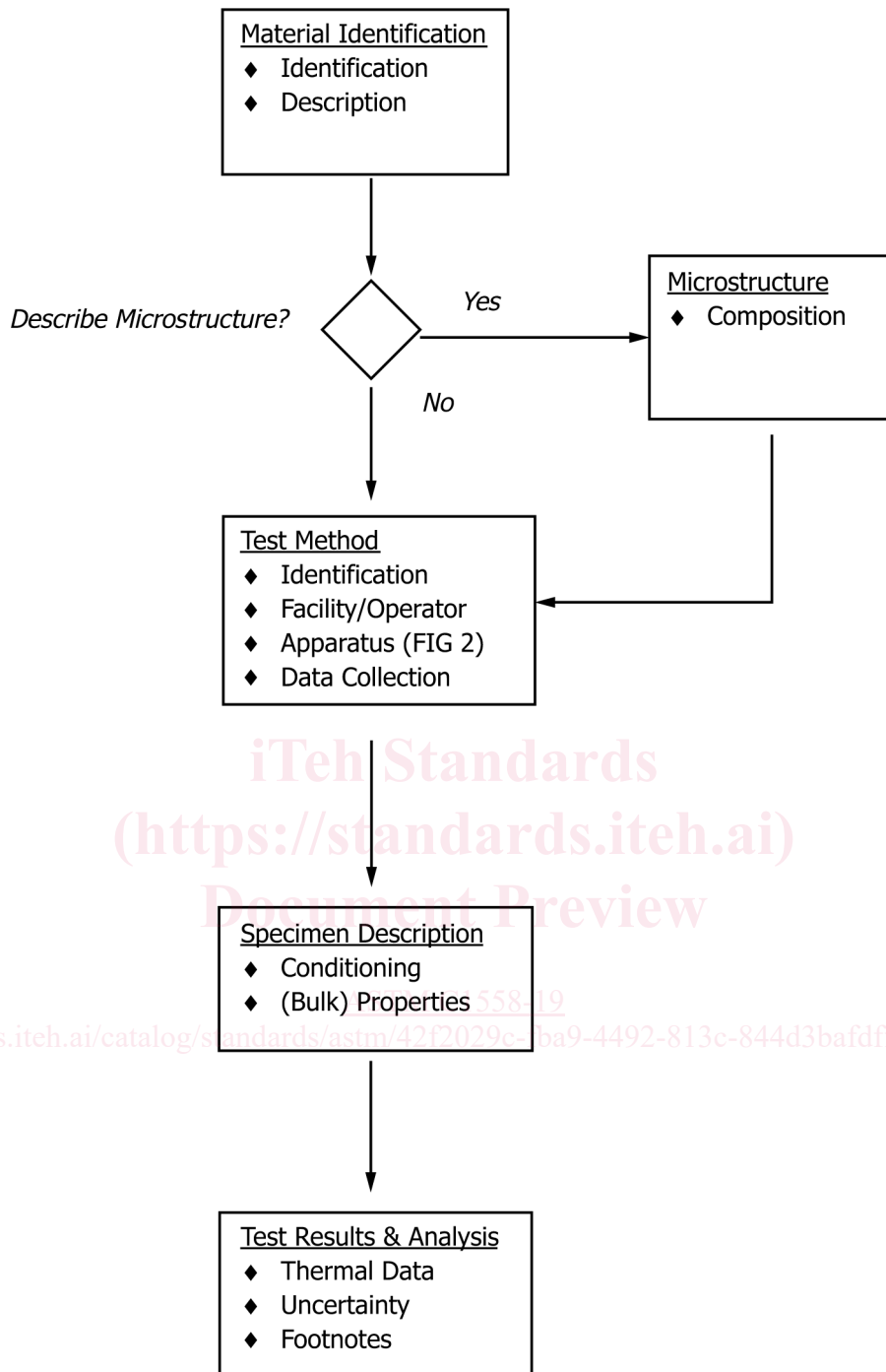


FIG. 1 Sequence of Steps for Entering Data

10.1.3 *Hot Temperature—Average (63*)*—Time-averaged temperature of the hot surface in contact with the specimen.

10.1.4 *Hot Temperature—Standard Deviation (64)*—Standard deviation of time-averaged data of the hot surface temperature.

10.1.5 *Cold Temperature—Average (65*)*—Time-averaged temperature of the cold surface in contact with the specimen.

10.1.6 *Cold Temperature—Standard Deviation (66)*—Standard deviation of time-averaged data of the cold surface temperature.

10.1.7 *Heat Flow—Average (67*)* —Time-averaged heat flow through the meter area.

10.1.8 *Heat Flow—Standard Deviation (68)*—Standard deviation of the time-averaged data for the heat flow.