

INTERNATIONAL ELECTROTECHNICAL COMMISSION
COMMISSION ÉLECTROTECHNIQUE INTERNATIONALE

IEC 60633
Edition 3.0 2019-04

HIGH-VOLTAGE DIRECT CURRENT
(HVDC) TRANSMISSION –

Vocabulary

IEC 60633
Édition 3.0 2019-04

TRANSPORT D'ÉNERGIE EN COURANT CONTINU À
HAUTE TENSION (CCHT) –

Vocabulaire

C O R R I G E N D U M 1

Corrections to the French version appear after the English text.

Les corrections à la version française sont données après le texte anglais.

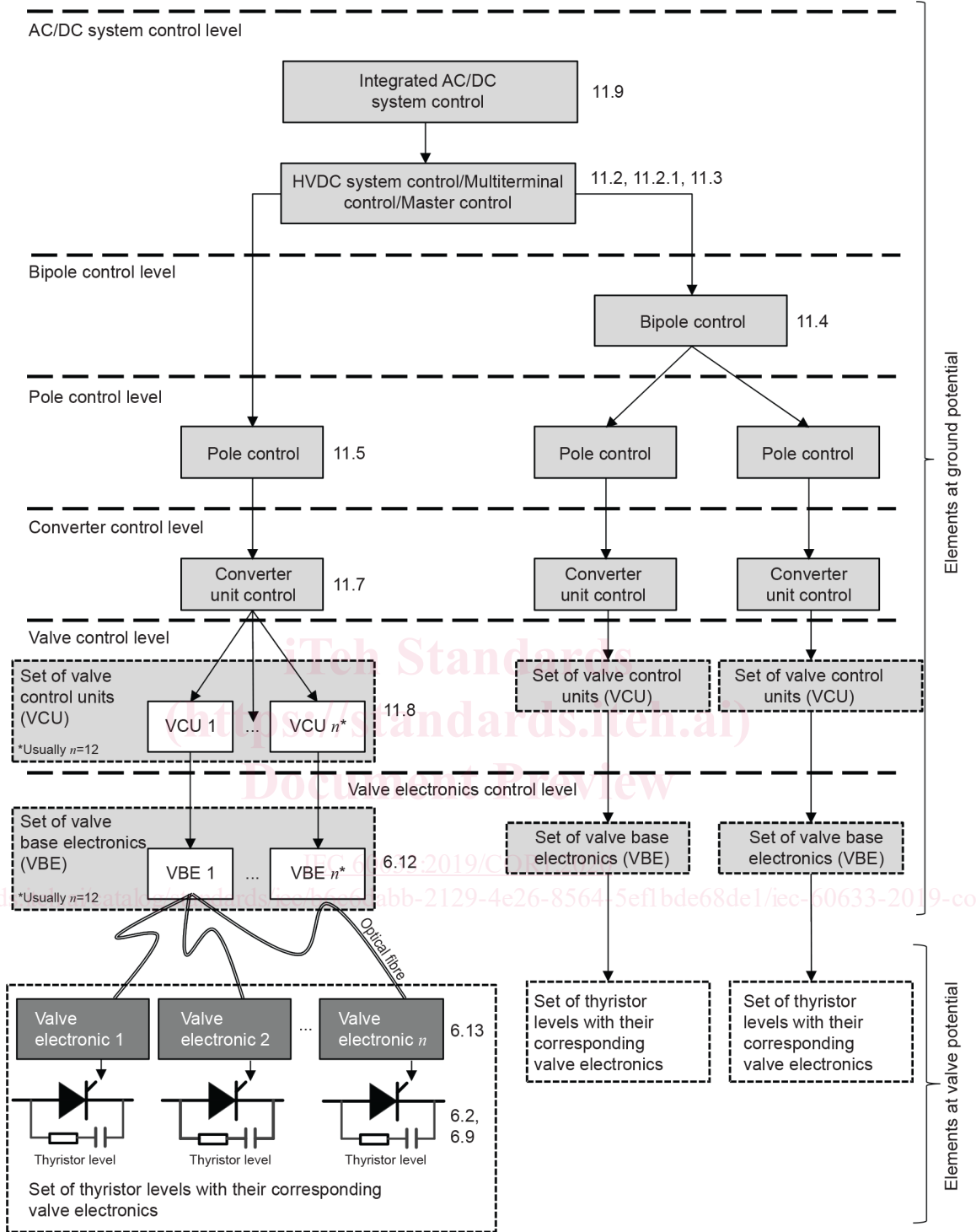
Figure 12 – Hierarchical structure of an HVDC control system

Replace the existing Figure 12 by the following new figure:

[IEC 60633:2019/COR1:2020](https://standards.iteh.ai/catalog/standards/iec/b6c6dabb-2129-4e26-8564-5ef1bde68de1/iec-60633-2019-cor1-2020)

<https://standards.iteh.ai/catalog/standards/iec/b6c6dabb-2129-4e26-8564-5ef1bde68de1/iec-60633-2019-cor1-2020>

Hierarchical structure of an HVDC control system



IEC

Key

- | | |
|------------------------------|--------------------------------------|
| 6.2 Converter bridge | 11.3 HVDC master control |
| 6.9 Valve thyristor levels | 11.4 HVDC system bipole control |
| 6.12 Valve base electronics | 11.5 HVDC system pole control |
| 6.13 Valve electronics | 11.7 Converter unit control |
| 11.2 HVDC system control | 11.8 Valve control unit |
| 11.2.1 Multiterminal control | 11.9 Integrated AC/DC system control |

Figure 12 – Hierarchical structure of an HVDC control system