

INTERNATIONAL ELECTROTECHNICAL COMMISSION
COMMISSION ÉLECTROTECHNIQUE INTERNATIONALE

IEC 60269-6/AMD1
Edition 1.0 2021-04

IEC 60269-6/AMD1
Édition 1.0 2021-04

LOW VOLTAGE FUSES –

FUSIBLES BASSE TENSION –

Part 6: Supplementary requirements for fuse-links for the protection of solar photovoltaic energy systems

Partie 6: Exigences supplémentaires concernant les éléments de remplacement utilisés pour la protection des systèmes d'énergie solaire photovoltaïque

CORRIGENDUM 1

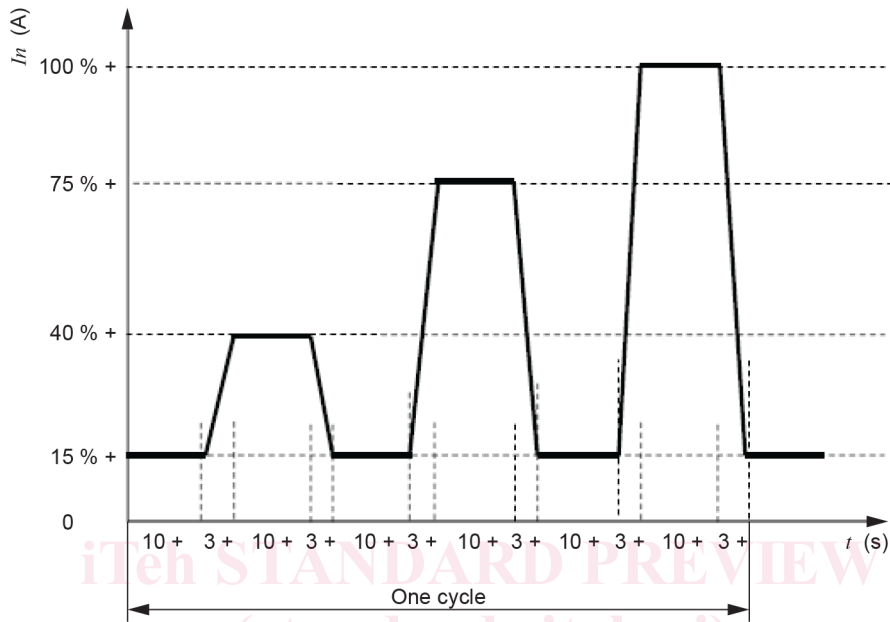
Corrections to the French version appear after the English text.

Les corrections à la version française sont données après le texte anglais.

[IEC 60269-6:2010/AMD1:2021/COR1:2021](https://standards.iteh.ai/catalog/standards/sist/61310dcf-de87-4bfc-b88e-8c825ed0e368/iec-60269-6-2010-amd1-2021-cor1-2021)

<https://standards.iteh.ai/catalog/standards/sist/61310dcf-de87-4bfc-b88e-8c825ed0e368/iec-60269-6-2010-amd1-2021-cor1-2021>

Replace the existing Figure 101 with the following new figure:

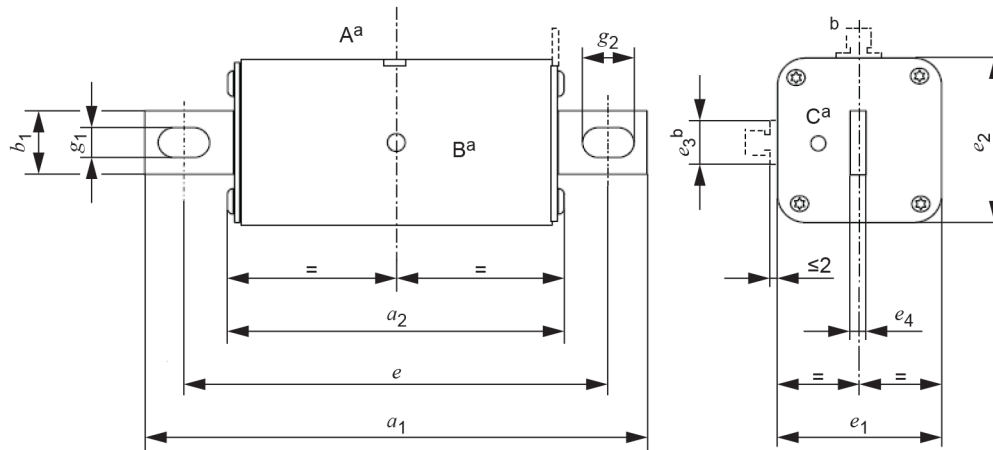


+ Current: 100 % = $(100 \begin{smallmatrix} 0 \\ -5 \end{smallmatrix})$ % Time: 10 s = $(10 \begin{smallmatrix} +2 \\ 0 \end{smallmatrix})$ s
 75 % = $(75 \begin{smallmatrix} 0 \\ -5 \end{smallmatrix})$ % 3 s = $(3 \begin{smallmatrix} 0 \\ -3 \end{smallmatrix})$ s
 40 % = $(40 \begin{smallmatrix} 0 \\ -5 \end{smallmatrix})$ %
 15 % = $(15 \begin{smallmatrix} 0 \\ -5 \end{smallmatrix})$ %

<https://standards.iteh.ai/catalog/standards/sist/61310dcf-de87-4bfc-b88e-8c825ed0e368/iec-60269-6-amd1-2021-cor1-2021>

Replace the existing Figure AA.8 with the following new figure:

Dimensions in millimetres



a Indicator position at A, B, C if required

b Lifting lug, optional, with or without indication option C, See Detail X in AA.5

Note 1) it is possible that the centre line of the two slots may be offset from "e" when g_2 exceeds the minimum value

IEC

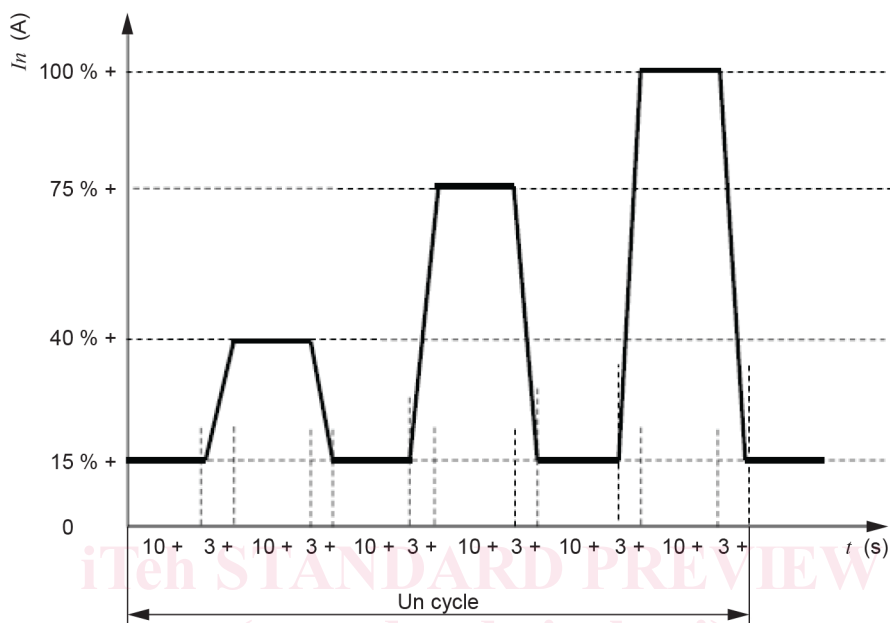
(standards.iteh.ai)

Delete notes a) to f) of Figure AA.8. IEC 60269-6:2010/AMD1:2021/COR1:2021

<https://standards.iteh.ai/catalog/standards/sist/61310dcf-de87-4bfc-b88e-8c825ed0e368/iec-60269-6-2010-amd1-2021-cor1-2021>

Corrections à la version française:

Remplacer la Figure 101 existante par la nouvelle figure suivante:



+ Courant: 100 % = $(100 \begin{smallmatrix} 0 \\ -5 \end{smallmatrix})$ % Temps: 10 s = $(10 \begin{smallmatrix} +2 \\ 0 \end{smallmatrix})$ s
 % 75 % = $(75 \begin{smallmatrix} 0 \\ -5 \end{smallmatrix})$ % 3 s = $(3 \begin{smallmatrix} 0 \\ -3 \end{smallmatrix})$ s
 40 % = $(40 \begin{smallmatrix} 0 \\ -5 \end{smallmatrix})$ %
 15 % = $(15 \begin{smallmatrix} 0 \\ -5 \end{smallmatrix})$ %

<https://standards.iteh.ai/catalog/standards/sist/61310dcf-de87-4bfc-b88e-8c825ed0e368/iec-60269-6-amd1-2021-cor1-2021>