



Designation: **D6254/D6254M—13** **D6254/D6254M – 20**

Standard Specification for Wirebound Pallet-Type Wood Boxes¹

This standard is issued under the fixed designation D6254/D6254M; the number immediately following the designation indicates the year of original adoption or, in the case of revision, the year of last revision. A number in parentheses indicates the year of last reapproval. A superscript epsilon (ϵ) indicates an editorial change since the last revision or reapproval.

This standard has been approved for use by agencies of the U.S. Department of Defense.

1. Scope

1.1 This specification covers the fabrication of new fully enclosed wirebound pallet-type wood boxes intended for use as containers for domestic and overseas shipment of general materials and supplies, not exceeding 2500 lb [1134 kg] (see 4.1 and 10.1).

1.2 Wirebound pallet-type wood box performance is dependent on its fabricated components; therefore, a variety of types, classes, and treatments reflecting varied performance are specified (see 4). This specification, however, does not cover wirebound pallet-type wood box performance under all atmosphere, handling, shipping, and storage conditions.

1.3 The use of other construction methods or techniques is acceptable and permitted (see 5.1.11), provided the resulting packaging systems shall be of equal or better performance than would result from the use of these specified materials and procedures. The appropriate distribution cycle provided in Practice D4169 can be used to develop comparative procedures and criteria.

1.4 *Units*—The values stated in either inch-pound or SI units are to be regarded separately as standard. Within the text, the SI units are shown in brackets. The values stated in each system are not exact equivalents; therefore, each system must be used independently of the other. Combining values from the two systems may result in nonconformance with the standard. See for conversion of units.

1.5 *This standard does not purport to address all of the safety concerns, if any, associated with its use. It is the responsibility of the user of this standard to establish appropriate safety, health, and environmental practices and determine the applicability of regulatory limitations prior to use.*

1.6 *This international standard was developed in accordance with internationally recognized principles on standardization established in the Decision on Principles for the Development of International Standards, Guides and Recommendations issued by the World Trade Organization Technical Barriers to Trade (TBT) Committee.*

2. Referenced Documents

2.1 ASTM Standards:²

D996 Terminology of Packaging and Distribution Environments

D3951 Practice for Commercial Packaging

D3953 Specification for Strapping, Flat Steel and Seals

¹ This specification is under the jurisdiction of ASTM Committee D10 and is the direct responsibility of Subcommittee D10.12 on Shipping Containers, Crates, Pallets, Skids and Related Structures.

Current edition approved April 15, 2013; Oct. 1, 2020. Published September 2013; October 2020. Originally approved in 1998. Last previous edition approved in 2007; 2013 as D6254/D6254M—07; D6254/D6254M – 13. DOI: 10.1520/D6254_D6254M-13-10.1520/D6254_D6254M-20.

² For referenced ASTM standards, visit the ASTM website, www.astm.org, or contact ASTM Customer Service at service@astm.org. For *Annual Book of ASTM Standards* volume information, refer to the standard's Document Summary page on the ASTM website.



- D4169 Practice for Performance Testing of Shipping Containers and Systems
- D4442 Test Methods for Direct Moisture Content Measurement of Wood and Wood-Based Materials
- D4444 Test Method for Laboratory Standardization and Calibration of Hand-Held Moisture Meters
- D6199 Practice for Quality of Wood Members of Containers and Pallets
- D6253 Practice for Treatment and/or Marking of Wood Packaging Materials
- F1667 Specification for Driven Fasteners: Nails, Spikes, and Staples
- IEEE/ASTM SI 10 Standard for Use of the International System of Units (SI): The Modern Metric System
- 2.2 *Code of Federal Regulations*:³
 - CFR Parts 107–180, Title 49, Hazardous Materials Regulations
- 2.3 *National Institute of Standards and Technology (NIST) Standard*:⁴
 - PS 1–07 Structural Plywood
 - PS 20–05 American Softwood Lumber Standard
- 2.4 *Hardwood Plywood and Veneer Association Standard*:⁵
 - ANSI/HPVA HP-1-2004 American National Standard for Hardwood and Decorative Plywood
- 2.5 *National Motor Freight Traffic Association*:⁶
 - National Motor Freight Classification
- 2.6 *Uniform Classification Committee Standard*:⁷
 - Uniform Freight Classification
- 2.7 *American Wood Protection Association (AWPA)*:⁸
 - AWPA P36 Standard for Copper Naphthenate (CuN)
 - AWPA P37 Standard for Oxine Copper (Copper-8-Quinolinolate) (Cu8)
- 2.8 *Material Handling Industry of America (MHIA)/ANSI Standard*:⁹
 - MHIA/ANSI MH1–2005 Pallets, Slip Sheets, and Other Bases for Unit Loads
- 2.9 *International Standard*¹⁰
 - International Standards for Phytosanitary Measures Publication No. 15 (ISPM 15) Regulation of Wood Packaging Material in International Trade
- 2.10 *U.S. Army Research, Development and Engineering Center (ARDEC)*¹¹
 - MIL-DTL-2427H Box, ammunition packing: Wood, nailed

3. Terminology

- 3.1 *Definitions*—General definitions for packaging and distribution environments are found in Terminology D996.
- 3.2 *Definitions of Terms Specific to This Standard*: The wood box components discussed herein were selected on the basis of part function. Alternate names are sometimes used by the wood packaging industry and end-users.
 - 3.2.1 *batten*—reinforcement used to hold the faceboards together to create rigidity.
 - 3.2.2 *binding wire*—round steel wire stapled to the faceboards which ends in a loop, the prong of which is firmly anchored in a board or twisted to form a loop.
 - 3.2.3 *blank*—a flat unassembled wirebound box exclusive of pallet base and top.
 - 3.2.4 *cleat*—lumber piece which forms the wirebound box framework and to which the faceboards are stapled.
 - 3.2.5 *deckboard*—the material used to make up the pallet base top and bottom surfaces referred to as top and bottom deckboards.
 - 3.2.6 *faceboard*—the material used for the front, end, bottom, sides, and top.

³ Available from U.S. Government Printing Office, 732 N. Capitol St., NW, Mail Stop: SDE, Washington, DC 20401, www.access.gpo.gov.
⁴ Available from National Institute of Standards and Technology (NIST), 100 Bureau Dr., Stop 1070, Gaithersburg, MD 20899-1070, www.nist.gov.
⁵ Available from Hardwood Plywood and Veneer Association (HPVA), P.O. Box 2789, Reston, VA 22090-0789, www.hpva.org.
⁶ Available from National Motor Freight Traffic Association, Inc. (NMFTA), 1001 N Fairfax St., Ste 600, Alexandria, VA 22314, www.nmfta.org.
⁷ Available from the Uniform Classification Committee, Tariff Publishing Officer, 151 Ellis St., N.E. Suite 200, Atlanta, GA 30335.
⁸ Available from American Wood Protection Association (AWPA), P.O. Box 361784, Birmingham, AL 35236-1784, awpa.com.
⁹ Available from Material Handling Industry of America (MHIA) MH1 Secretariat, 8720 Red Oak Blvd., Suite 201, Charlotte, NC 28217, www.mhiastore.org.
¹⁰ Available from the International Plant Protection Convention (IPPC), www.ippc.int.
¹¹ Available from ASSIST Quicksearch, assist.daps.dla.mil/quicksearch

3.2.7 *lumber*—manufactured wood product derived from a log through sawing or planing.

3.2.8 *plywood*—panel built up of sheers of veneer called plies, united under pressure by a bonding agent to create a panel with an adhesive bond between plies.

3.2.9 *staple*—U-shaped piece of wire with pointed ends, driven astride the binding wires in fabricating the blank or attaching boards to battens.

3.2.10 *stringer*—a runner to which the riser batten and deckboards are attached and which serves as a spacer between top and bottom deckboards to permit mechanical handling equipment entry.

3.2.11 *veneer*—thin layer or sheet of wood.

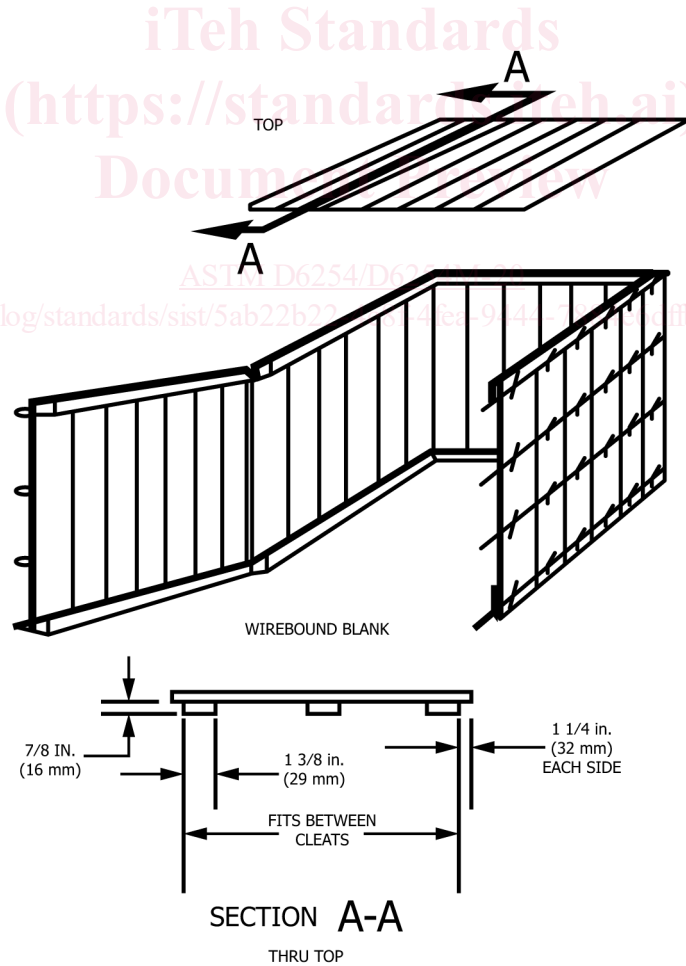
4. Classification

4.1 *Type:*

4.1.1 *Type I*—Sheathed lumber, 2500-lb [1134-kg] maximum load (see Fig. 1).

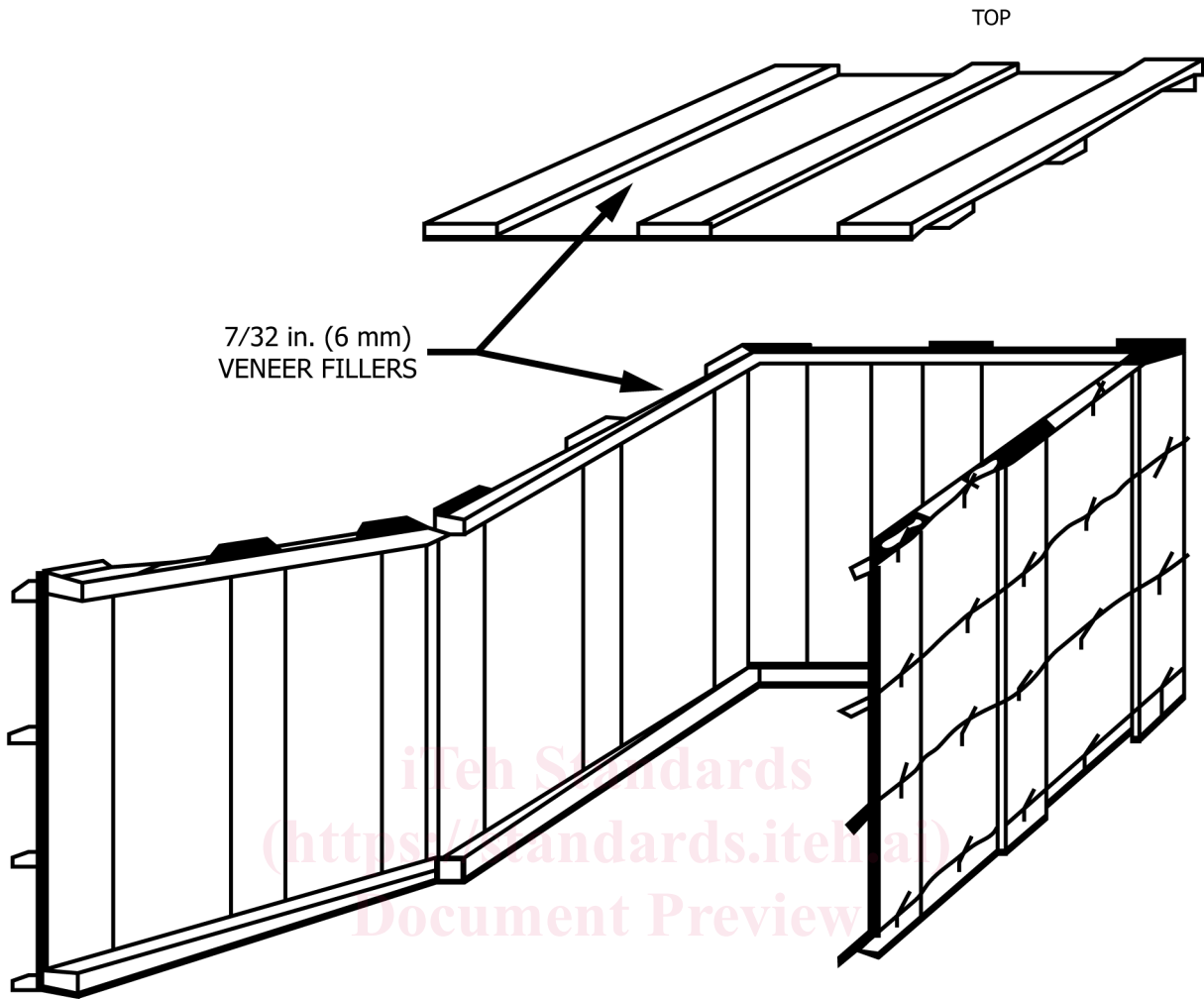
4.1.2 *Type II*—Sheathed lumber and veneer, 1500-lb [680-kg] maximum load (see Fig. 2).

4.1.3 *Type III*—Sheathed lumber and veneer with two different length sidewalls, 1500-lb [680-kg] maximum load (see Fig. 3).



NOTE 1—All cleats (see Figs. 5 and 7), $1\frac{3}{16} \times \frac{7}{8}$ in. nominal [16 × 16 mm].
 Select Class 1 or 2 Base from Fig. 5.

FIG. 1 Type I Wirebound Box-Sheathed Lumber



ASTM D6254/D6254M-20

<https://standards.iteh.ai/catalog/standards/sist/6a9444-7884e6dff6f/astm-d6254-d6254m-20> WIREBOUND BLANK

NOTE 1—Top battens (see Fig. 1 and Fig. 7) $\frac{7}{8} \times 1 \frac{3}{8}$ in. nominal [16 × 29 mm].
 All cleats (see Fig. 5 and Fig. 7) $1 \frac{3}{16} \times \frac{7}{8}$ in. nominal [16 × 16 mm].
 Corner and intermediate faceboards 4 in. nominal × $\frac{3}{8}$ in. [90 × 8 mm] (width × thickness).
 Select Class 1 or 2 Base from Fig. 5.

FIG. 2 Type II Wirebound Box-Sheathed Lumber and Veneer.

4.1.4 *Type IV*—Sheathed plywood, 2500-lb [1134-kg] maximum load (see Fig. 4).

4.2 *Class*:

4.2.1 *Class 1*—Partial four-way entry base (see Fig. 5).

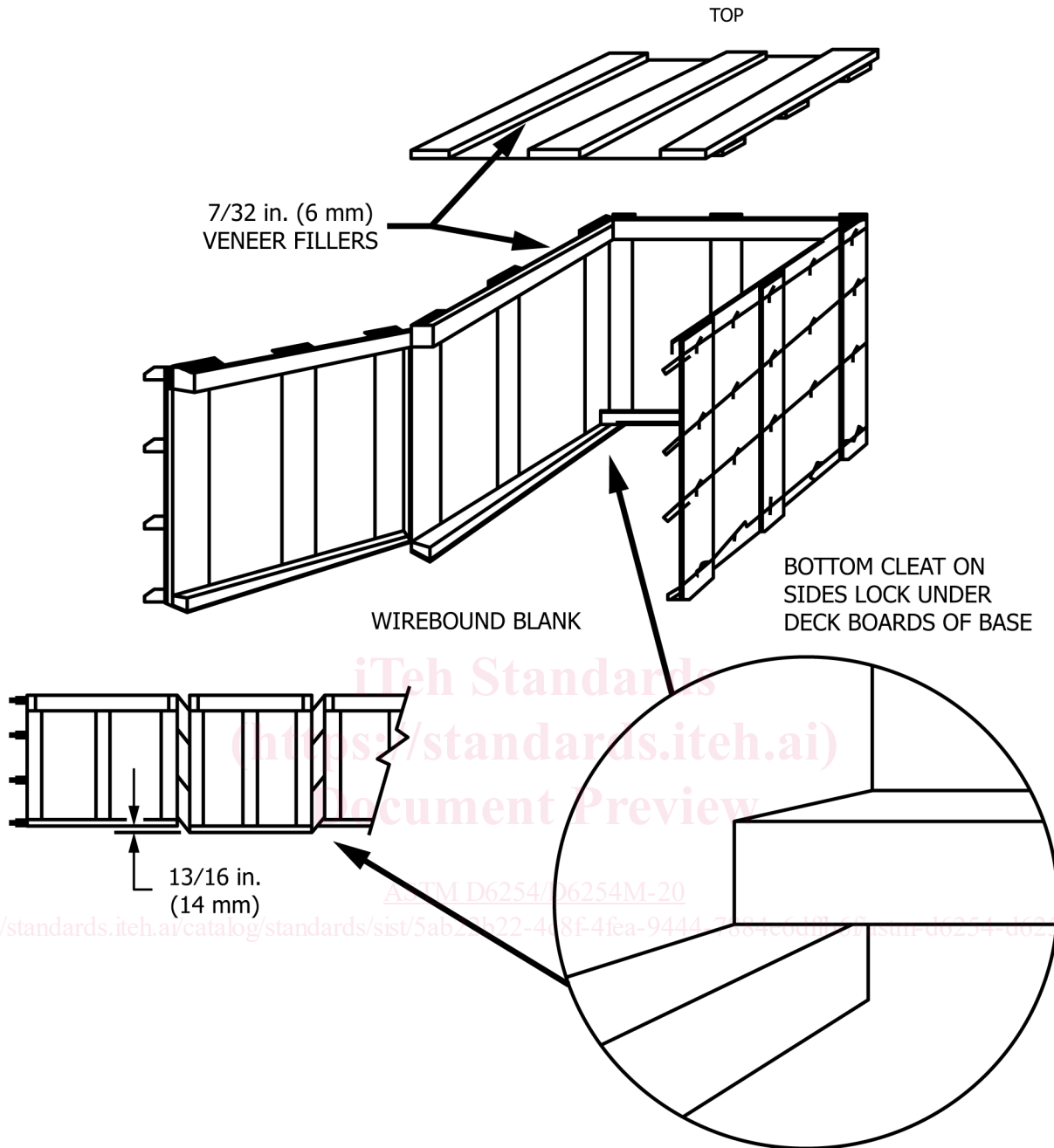
4.2.2 *Class 2*—Two-way entry base (see Fig. 5).

4.2.3 *Class 3*—Partial four-way entry base with two different length sidewalls (see Fig. 6).

4.2.4 *Class 4*—Two-way entry base with two different length sidewalls (see Fig. 6).

4.3 *Treatment*:

4.3.1 *Treatment A*—Without water-repellent preservative (see 6.1.6).



NOTE 1—Top cleat $1\frac{3}{16} \times 1\frac{5}{8}$ in. nominal [16 × 35 mm].
 Bottom cleat $1\frac{3}{16} \times \frac{7}{8}$ in. nominal [16 × 16 mm].
 Top battens $\frac{7}{8} \times 1\frac{3}{8}$ in. nominal [16 × 29 mm] (thickness × width).
 Corner and intermediate faceboards 4 in. wide nominal × $\frac{3}{8}$ in. thick [90 × 8 mm].
 Select Class 3 or 4 Base from Fig. 6.

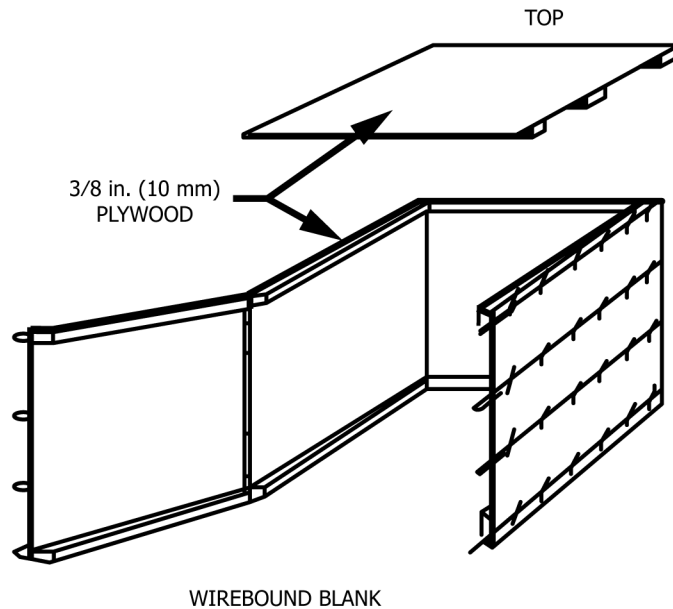
FIG. 3 Type III Wirebound Box-Sheathed Lumber and Veneer with Two Different Length Sidewalls.

4.3.2 *Treatment B*—With water-repellent wood preservative (see 6.1.6).

5. Ordering Information

5.1 Purchasers should select the preferred permitted options and include the following information in procurement and purchase order documents:

5.1.1 Specification title, number, and date.



NOTE 1—Top battens (see Fig. 1 and Fig. 7) $\frac{7}{8} \times 1\frac{3}{8}$ in. nominal [16 × 29 mm].
 All cleats (see Fig. 5 and Fig. 7) $1\frac{5}{16} \times \frac{7}{8}$ in. nominal [16 × 16 mm]
 Select Class 1 or 2 from Fig. 5

FIG. 4 Type IV Wirebound Box Sheathed Plywood.

iTeh Standards
 (https://standards.itih.ai)
 Document Preview

- 5.1.2 Box type, class, and treatment required (see 4.1 – 4.3 and 7.1).
- 5.1.3 Contents weight.
- 5.1.4 Modifications to container manufacturer’s identification (see 7.5).
- 5.1.5 Box dimensions specified in order of length × width × depth (see 7.6 and Fig. 7).
- 5.1.6 When preservative treatment is required (see 4.3 and 6.1.6).
- 5.1.7 Whether boxes are to be shipped assembled or knocked down (see 9.1).
- 5.1.8 Whether additional markings are required (see 9.2).
- 5.1.9 Whether different strapping materials are required (see S2.2).
- 5.1.10 Whether additional support is required (see S2.2.3).
- 5.1.11 Whether other construction methods or techniques and proof are acceptable and permitted.
- 5.1.12 When ISPM 15 compliance is required (see 9.3).

6. Materials and Manufacture

6.1 *Materials*—Materials shall be as specified herein. Materials not specified shall be selected by the contractor or box builder and shall be subject to all provisions of this specification. Materials shall be free of defects, which adversely affect performance or serviceability of the finished product.

6.1.1 *Lumber*—Lumber components shall conform to Practice D6199, PS 20, or the NHLA rules. All lumber sizes specified herein shall be nominal and shall be the minimum acceptable sizes for lumber components. Lumber components shall have a target thickness and width uniform in dimension and 50 % of components shall meet or exceed the target dimensions at the time of component manufacture.

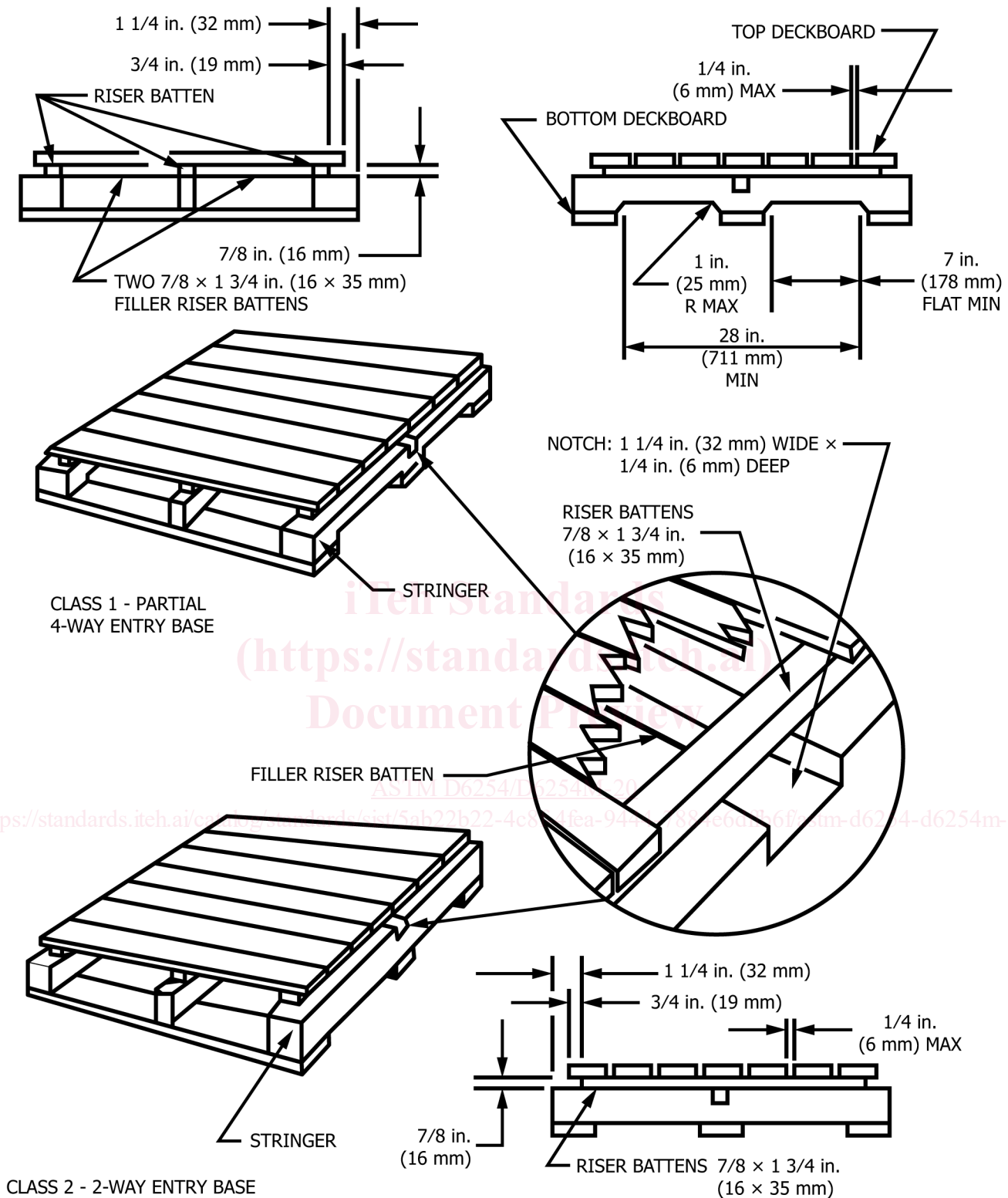


FIG. 5 Class 1 and 2—Pallet Bases (for Types I, II, and IV Boxes)

6.1.1.1 *Lumber Quality*—Grain divergence (grain slope), whether on a lumber face or edge, shall not exceed 1 in. [25 mm] per 10-in. [254-mm] length for pallet base and box frame members and shall not exceed 1 in. [25 mm] per 8-in. [203-mm] length for face boards. Members shall be free from decay and sufficiently smooth on the exterior surface to permit legible markings. Stains