



Designation: E1351 – 01 (Reapproved 2020)

## Standard Practice for Production and Evaluation of Field Metallographic Replicas<sup>1</sup>

This standard is issued under the fixed designation E1351; the number immediately following the designation indicates the year of original adoption or, in the case of revision, the year of last revision. A number in parentheses indicates the year of last reapproval. A superscript epsilon ( $\epsilon$ ) indicates an editorial change since the last revision or reapproval.

### INTRODUCTION

Replication is a nondestructive sampling procedure which records and preserves the topography of a metallographic specimen as a negative relief on a plastic film. The microstructural replica can be examined using a light microscope (LM) or scanning electron microscope (SEM) for subsequent analysis. Specimens examined in the SEM are vacuum coated with vaporized carbon or a suitable metal to provide contrast and conductivity. The convenience of the replication process makes it suitable for obtaining microstructures from field locations for subsequent examination and analysis in a laboratory. The proper preparation of the test surface and of the replica itself is of paramount importance and must receive careful attention. Because of the diversity of metallographic equipment available and the wide range of environments in which replication is conducted, the preparation of replicas of high quality should be viewed as a skilled process for which there exists a variety of techniques that achieve satisfactory results.

This practice presents some guidelines on the preparation of metallic surfaces and production of replicas and guidelines on evaluation of replica quality. It does not attempt to limit the variations in technique developed by skilled metallographers, each of which may produce acceptable replicas.

### 1. Scope

1.1 This practice covers recognized methods for the preparation and evaluation of cellulose acetate or plastic film replicas which have been obtained from metallographically prepared surfaces. It is designed for the evaluation of replicas to ensure that all significant features of a metallographically prepared surface have been duplicated and preserved on the replica with sufficient detail to permit both LM and SEM examination with optimum resolution and sensitivity.

1.2 This practice may be used as a controlling document in commercial situations.

1.3 The values stated in SI units are to be regarded as the standard. Inch-pound units given in parentheses are for information only.

1.4 *This standard does not purport to address all of the safety concerns, if any, associated with its use. It is the responsibility of the user of this standard to establish appropriate safety, health, and environmental practices and determine the applicability of regulatory limitations prior to use.*

<sup>1</sup> This practice is under the jurisdiction of ASTM Committee E04 on Metallography and is the direct responsibility of Subcommittee E04.01 on Specimen Preparation.

Current edition approved Nov. 1, 2020. Published November 2020. Originally approved in 1990. Last previous edition approved in 2012 as E1351 – 01(2012). DOI: 10.1520/E1351-01R20.

1.5 *This international standard was developed in accordance with internationally recognized principles on standardization established in the Decision on Principles for the Development of International Standards, Guides and Recommendations issued by the World Trade Organization Technical Barriers to Trade (TBT) Committee.*

### 2. Referenced Documents

2.1 *ASTM Standards:*<sup>2</sup>

- A335/A335M Specification for Seamless Ferritic Alloy-Steel Pipe for High-Temperature Service
- E3 Guide for Preparation of Metallographic Specimens
- E7 Terminology Relating to Metallography
- E407 Practice for Microetching Metals and Alloys

### 3. Terminology

3.1 Definitions—For definitions of terms used in this practice, refer to Terminology E7.

### 4. Significance and Use

4.1 Replication is a nondestructive sampling procedure that records and preserves the topography of a metallographically

<sup>2</sup> For referenced ASTM standards, visit the ASTM website, [www.astm.org](http://www.astm.org), or contact ASTM Customer Service at [service@astm.org](mailto:service@astm.org). For *Annual Book of ASTM Standards* volume information, refer to the standard's Document Summary page on the ASTM website.

prepared surface as a negative relief on a plastic film (replica). The replica permits the examination and analysis of the metallographically prepared surface on the LM or SEM.

4.2 Enhancement procedures for improving replica contrast for microscopic examination are utilized and sometimes necessary (see 8.1).

NOTE 1—It is recommended that the purchaser of a field replication service specify that each replicator demonstrate proficiency by providing field prepared replica metallography and direct LM and SEM comparison to laboratory prepared samples of an identical material by grade and service exposure.

## 5. Evaluation Methods

5.1 A suitable replica should accurately reproduce all the microstructural features present on the surface that was replicated.

5.2 No visible loss of resolution is permitted over the normal range of magnifications on the LM as shown in Figs. 1-3.

5.3 The resolution of the structural detail in the replica should exceed 0.1  $\mu\text{m}$  to permit SEM examination at high magnifications (up to 5000 $\times$ ). See Figs. 4-6.

## 6. Metal Surface Preparation

6.1 If magnetic particle testing was previously used on the work-piece, demagnetize the piece before beginning surface preparation.

6.2 Surface preparation may be accomplished using manual, mechanical, or electrolytic polishing methods.

NOTE 2—Electrolytic preparation always carries the risk of pitting, and of enlarging existing voids such as creep cavities and porosity.

6.3 Prepare the surface to be replicated using the methods suggested in Methods E3 modified for field use, as appropriate, in such a way as to obtain a surface free of deformation, scratches, polishing defects, etch pits, and other artifacts which may obscure the true microstructural features.

NOTE 3—The presence of decarburization can be detected with a portable hardness tester during the grinding steps. Further grinding to reach a surface free of decarburization can be monitored with the hardness tester. A replica may also be made on the decarburized surface, if it serves the purpose of the investigation.

6.4 Do not remove any precipitates, carbides, nonmetallic inclusions such as oxides and sulfides during the polishing or etching operations.

6.5 Etching procedures for surface metallographic examination should be performed in accordance with Practice E407.

6.6 The quality of the surface preparation should be controlled by the use of a portable field microscope.

6.7 To prevent possible contamination of any components, the etched area should be prepared carefully and thoroughly washed after replication.

## 7. Replication Technique

7.1 In general, a replicated area of 12 by 18 mm (0.5 by 0.75 in.) is satisfactory.

7.2 A replica is produced by one of the two methods described below. All methods produce acceptable replicas.

7.2.1 A replica may be produced by wetting one side of a sheet of plastic film with a suitable solvent, such as acetone or methyl acetate, and applying the wetted side of the film to the prepared metal surface.



FIG. 1 Example of Replica Microstructure at 100 $\times$  LM. Material: See Specification A335/A335M, Grade P22. Etchant: 2 % Nital

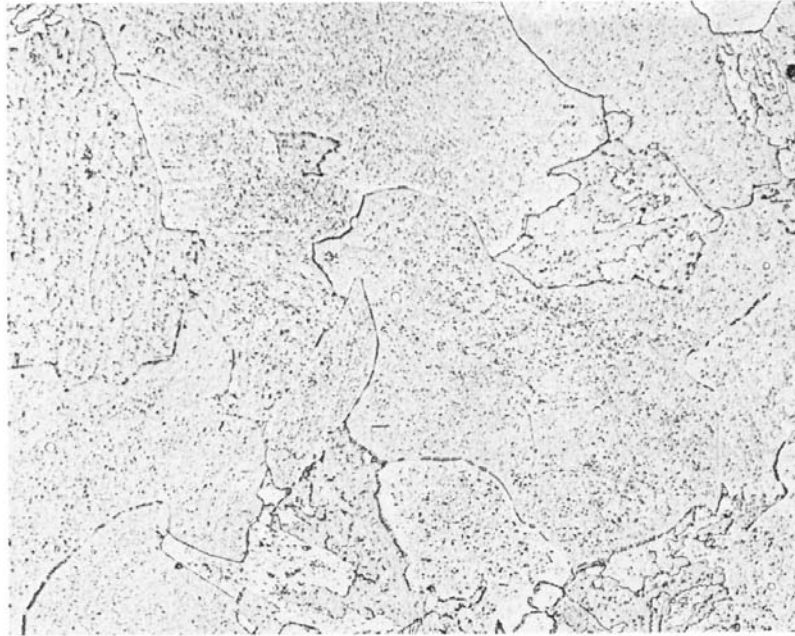


FIG. 2 Example of Replica Microstructure at 400x LM. Material: See Specification **A335/A335M**, Grade P22. Etchant: 2 % Nital

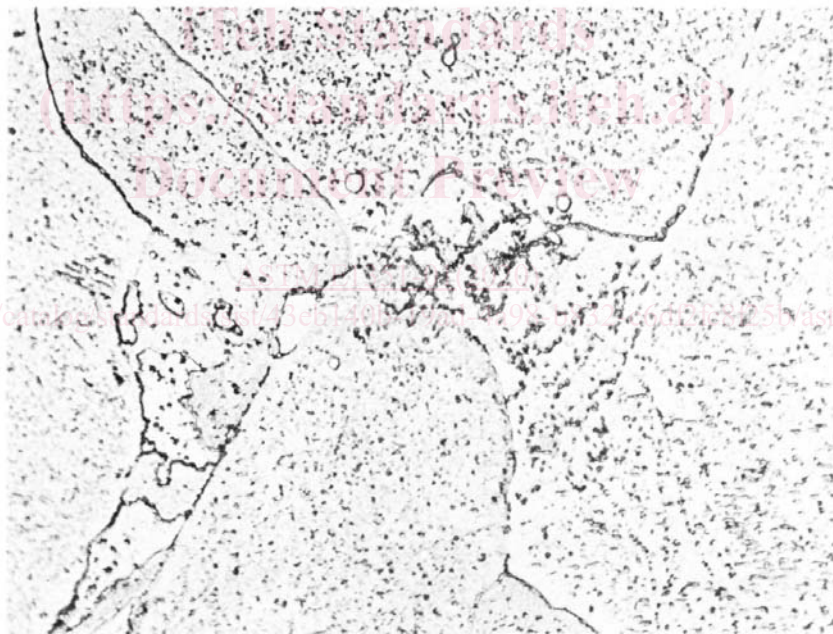


FIG. 3 Example of Replica Microstructure at 1000x LM. Material: See Specification **A335/A335M**, Grade P22. Etchant: 2 % Nital

7.2.2 Alternatively, a replica may be produced by wetting the prepared metallic surface with a suitable solvent, such as acetone or methyl acetate, and applying the strip of plastic film (usually cellulose acetate) to the wet surface. The film is pressed against the surface for several seconds to ensure adherence.

7.2.3 Apply a rubber-based replicating compound to the prepared metal surface. Cover with the material's carrier paper, then use a roller to spread the compound into a uniformly thin layer under the paper.

7.3 The replica shall be prepared as soon as possible after specimen preparation of the original surface is completed, to minimize transfer of post-preparation oxidation and contamination to the replicating film.

7.4 After the film has dried, remove the replica and permanently mount on a rigid slide to facilitate analysis of the replica and to protect it from damage during subsequent transport and storage. The mounting may be accomplished using a double-sided adhesive tape, either applied to the back side of the dried



FIG. 4 Example of Replica Microstructure at 1000× SEM. Material: See Specification A335/A335M, Grade P22. Etchant: 2 % Nital

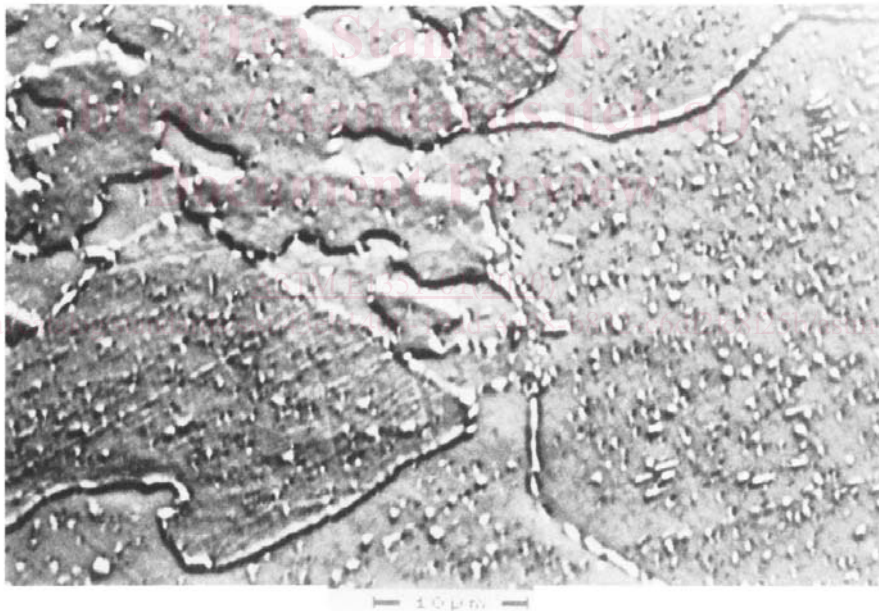


FIG. 5 Example of Replica Microstructure at 2000× SEM. Material: See Specification A335/A335M, Grade P22. Etchant: 2 % Nital

replica film while it remains on the prepared surface or applied to the slide before transferring the replica on the tape surface. Using the rounded end of a glass rod to apply the replica on the tape is usually beneficial in reducing air bubbles and ensuring a flat replica. Some metallographers prefer to coat the back side of the replica with an opaque substance such as black paint or ink prior to applying tape to improve the contrast when the replica is subsequently examined.

7.5 Place identification on the slide, and store it in a durable slide container for safe, contamination-free transfer to the examination laboratory.

## 8. Replica Examination

8.1 To enhance contrast of the replica for microscopic examination at low magnifications on the LM, the replica may be placed on an underlying polished surface, such as a mirror, which acts as a reflector. In addition, using a coating of black ink or paint on the back side of the replica can improve the contrast. In some cases, the use of interference illumination will also improve contrast; however, optimum contrast for both LM and SEM can be achieved by coating the replica surface with a thin, highly reflective metallic layer material normally deposited in a vacuum coating unit. Aluminum, carbon, and