



Designation: C417 – 21

Standard Test Method for Thermal Conductivity of Unfired Monolithic Refractories¹

This standard is issued under the fixed designation C417; the number immediately following the designation indicates the year of original adoption or, in the case of revision, the year of last revision. A number in parentheses indicates the year of last reapproval. A superscript epsilon (ϵ) indicates an editorial change since the last revision or reapproval.

1. Scope

1.1 This test method supplements Test Method C201, and shall be used in conjunction with that test method for determining the thermal conductivity of unfired monolithic refractories.

1.2 The values stated in inch-pound units are to be regarded as standard. The values given in parentheses are mathematical conversions to SI units that are provided for information only and are not considered standard.

1.3 *This standard does not purport to address all of the safety concerns, if any, associated with its use. It is the responsibility of the user of this standard to establish appropriate safety, health, and environmental practices and determine the applicability of regulatory limitations prior to use.*

1.4 *This international standard was developed in accordance with internationally recognized principles on standardization established in the Decision on Principles for the Development of International Standards, Guides and Recommendations issued by the World Trade Organization Technical Barriers to Trade (TBT) Committee.*

2. Referenced Documents

2.1 *ASTM Standards:*²

C182 Test Method for Thermal Conductivity of Insulating Firebrick

C201 Test Method for Thermal Conductivity of Refractories

C862 Practice for Preparing Refractory Concrete Specimens by Casting

C1054 Practice for Pressing and Drying Refractory Plastic and Ramming Mix Specimens

E220 Test Method for Calibration of Thermocouples By Comparison Techniques

¹ This test method is under the jurisdiction of ASTM Committee C08 on Refractories and is the direct responsibility of Subcommittee C08.02 on Thermal Properties.

Current edition approved April 1, 2021. Published April 2021. Originally approved in 1958. Last previous edition approved in 2015 as C417 – 05 (2015). DOI: 10.1520/C0417-21.

² For referenced ASTM standards, visit the ASTM website, www.astm.org, or contact ASTM Customer Service at service@astm.org. For *Annual Book of ASTM Standards* volume information, refer to the standard's Document Summary page on the ASTM website.

3. Significance and Use

3.1 The thermal conductivity of monolithic refractories is a property required for selecting their thermal transmission characteristics. Users select monolithic refractories to provide specified conditions of heat loss and cold face temperature, without exceeding the temperature limitation of the monolithic refractory. This test method establishes placement of thermocouples and positioning of test specimens in the calorimeter.

3.2 This procedure must be used with Test Method C201 and requires a large thermal gradient and steady-state conditions. The results are based upon a mean temperature.

3.3 The data from this test method are suitable for specification acceptance, estimating heat loss and surface temperature, and the design of multi-layer refractory construction.

3.4 The use of these data requires consideration of the actual application environment and conditions.

4. Apparatus

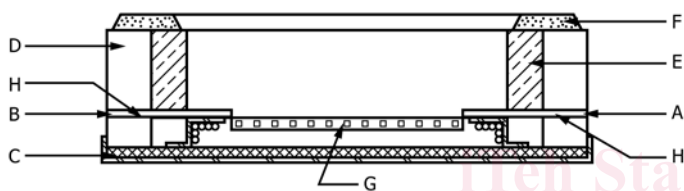
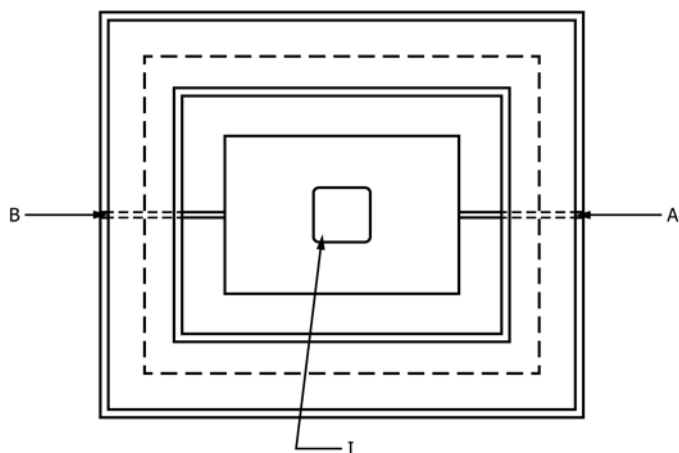
4.1 The apparatus shall consist of that described in Test Method C201, modified as in 4.2 of this test method, with the addition of thermocouples and refractory fiber paper, as described in Sections 6 and 7.

4.2 The furnace shall be modified by drilling a nominal $\frac{3}{8}$ -in. (10-mm) diameter hole (Fig. 1) through the insulating firebrick in the furnace wall at each end of the center line of the 18-in. (456-mm) dimension of the furnace cavity. These holes shall be positioned so that the length of the hole will be parallel to the calorimeter surface and the bottom of the hole will coincide with the surface of the calorimeter. Copper tubing shall be placed within each hole so that a compressed air source can be attached to one side and flexible leads to a flowmeter can be attached to the other.

4.3 A compressed air supply and flowmeter for air.

5. Test Specimens

5.1 *Castable Refractories*—The test specimens may consist of either a panel 18 by 13½ by 2½ in. (456 by 342 by 64 mm), or an assembly of three straights 9 by 4½ by 2½ in. (228 by 114 by 64 mm) and six soaps 9 by 2¼ by 2½ in. (228 by 57 by 64 mm). These specimens shall be prepared as in one of the



- A—Inlet air
- B—Exhaust air
- C—Transite board
- D—Group 16 IFB
- E—Group 28 IFB
- F—Group 28 grindings
- G—Calorimeter assembly
- H—Copper tubing, nominal 3/8-in. (10-mm) diameter
- I—Center calorimeter

FIG. 1 Furnace Modification

following methods and in general accordance with the manufacturer's recommendation for water content and Practice C862.

5.1.1 *Panel Specimens*—This test specimen shall be a monolithic panel 18 by 13½ by 2½ in. (456 by 342 by 64 mm) in size, and shall be prepared in general accordance with Practice C862, as outlined in 5.1. The panel shall be cast in a steel mold with two steel rods (Note 1) taped in place at the center line of the 18-in. (456-mm) length of the mold cavity. These steel rods form the slot required so that the panel will fit over the tubing used for the entrance and exhaust of air and moisture from the furnace (see Fig. 1).

NOTE 1—Two ½-in. (13-mm) diameter steel rods 2 in. (51 mm) long should have approximately ½ in. (0.8 mm) removed longitudinally to provide a flat base.

5.1.2 *Straight Specimens*—This test specimen shall be three 9 by 4½ by 2½-in. (228 by 114 by 64-mm) straight brick and six 9 by 2¼ by 2½-in. (228 by 57 by 64-mm) soap brick and shall be prepared in accordance with Practice C862, as outlined in 5.1 and 5.1.1, and by cutting as required. The 9 by 4½-in. (228 by 114-mm) face of the three straight brick and the 9 by 2¼-in. face of the soap brick shall be flat and parallel, and the

thickness shall not vary more than ±0.01 in. (±0.3 mm). No grinding of the finish face is required if care is taken when removing the excess mix with the strikeoff bar and slicking the exposed surface with a minimum amount of troweling. Steel rods (described in Note 1) shall be used in two cavities to provide the required slots for air entry and exit.

5.2 *Plastic Refractories*—The test specimens shall be of the size and number described in 4.1 of Test Method C201, and shall be prepared in accordance with Practice C1054 and 3.2 of Test Method C201. The soap specimens shall be prepared by cutting dry 9-in. (228-mm) straight specimens with a suitable abrasive cut-off saw. The soap brick adjacent to the 9-in. (228-mm) face of the guard brick shall be slotted with a suitable abrasive cut-off saw at the center line of the 9-in. (228-mm) length to fit over the tubing used for the entrance, and exhaust of the air and moisture.

5.3 *Specimen Curing and Drying*—After the specified curing, the specimens shall be placed in a dryer at 250 °F (120 °C) for a minimum of 24 h, or until constant mass has been achieved.

6. Installation of Thermocouples in Test Specimen

6.1 *Thermocouples*—Calibrated thermocouples³ shall be embedded in the test specimen at two points for measuring the temperature. Use platinum-10% rhodium/platinum, Awg Gauge 28 (0.320-mm) wire in making the thermocouples.

6.2 Installation of Thermocouples:

6.2.1 For castable specimens prepared in accordance with 5.1.1, use the following thermocouple installation procedure. The hot junction of the thermocouples shall be placed in the center of each 18 by 13½-in. (456 by 342-mm) face and just below the surface of the test specimen. Grooves to receive the wire shall be cut in each 18 by 13½-in. (456 by 342-mm) face to a depth of ⅓ in. (0.8 mm) by means of an abrasive wheel 0.02 in. (0.5 mm) in thickness. The layout for the grooves allows all of the cold-junction ends of the wires to extend from one end of the specimen. Cut a groove in the center of each 18 by 13½-in. (456 by 342-mm) face along the 18-in. (456-mm) dimension and ending 1½ in. (38 mm) from the center point of the specimen. Extend the path of each groove at an angle of 90° to one end of the specimen by cutting grooves parallel to the 13½-in. (342-mm) edges and 1½ in. (3.8 mm) from the center point of the specimen. Before cementing the thermocouple wires in place, measurements shall be taken to obtain within 0.01 in. (0.3 mm) the eventual distance between the center lines of the thermocouple junctions. This shall be done by measuring the 2½-in. (64-mm) dimension of the specimens at the location for the hot junctions and deducting the distance between the center line of each junction in its embedded position and the surface of the specimen.

6.2.2 For castable specimens prepared in accordance with 5.1.2 and plastic refractory specimens prepared in accordance with 5.2, use the following thermocouple installation procedure. The hot junction of the thermocouples shall be placed in

³ Test Method E220 specifies thermocouple calibration procedures for thermocouples.

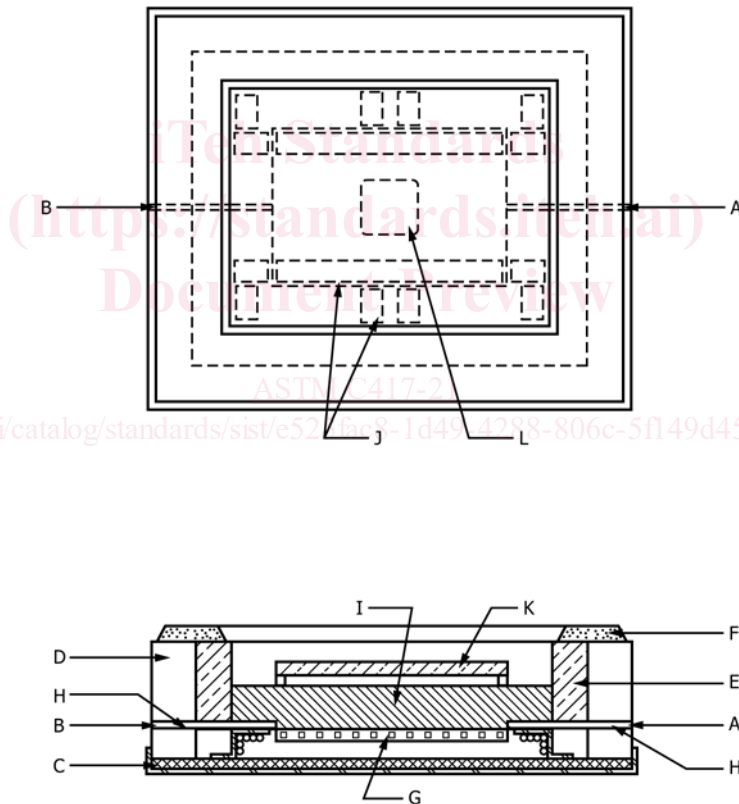
the center of each 9 by 4½-in. (228 by 114-mm) face, and just below the surface of the test specimen. Grooves to receive the wire shall be cut in each 9 by 4½-in. (228 by 114-mm) face of the brick to a depth of ⅓ in. (0.8 mm) by means of an abrasive wheel 0.02 in. (0.5 mm) in thickness. The layout for the grooves allows all of the cold-junction ends of the wires to extend from one end of the brick. Cut a groove in the center of each 9 by 4½-in. (228 by 114-mm) face along the 4½-in. (114-mm) dimension, and ending 1 in. (25 mm) from the edge of the specimen. Before cementing the thermocouple wires in place, measurements shall be taken to obtain within ±0.01 in. (±0.3 mm) the eventual distance between the center lines of the thermocouple junctions. This shall be done by measuring the 2½-in. (64-mm) dimension of the brick at the location for the hot junctions and deducting the distance between the center line of each junction in its embedded position and the surface of the brick.

7. Setup of Specimen and Silicon Carbide Slab

7.1 Specimen Setup:

7.1.1 For castable specimens prepared in accordance with 5.1.1, use the following setup procedure. Two strips of refractory fiber paper 18 by ½ by 0.02 in. (456 by 13 by 0.5 mm) shall be placed along the 18-in. dimension on the outer guard. These strips, used to prevent contact between the test material and the calorimeter assembly, also provide a passage for the flow of air. Push in a copper tube installed at each end of the furnace and position where their open ends are flush with the inside edge of the outer guard assembly. Pack the openings in the furnace walls where the tubes enter with ceramic fiber. Place the test specimen centrally over the center of the calorimeter and outer guard assembly on its 18 by 13½-in. (456 by 342-mm) face. Fill the small space between the furnace walls and the test specimen with granular insulating firebrick or ceramic fiber (Fig. 2).

7.1.2 For castable specimens prepared in accordance with 5.1.2 and plastic refractory samples prepared in accordance with 5.2, use the following setup procedure. Two strips of refractory fiber paper 13½ by ½ by 0.02 in. (342 by 13 by



- A—Inlet air
- B—Exhaust air
- C—Transite board
- D—Group 16 IFB
- E—Group 28 IFB
- F—Group 28 grindings
- G—Calorimeter assembly
- H—Copper tubing, nominal ⅜-in. (10-mm) diameter
- I—Monolithic panel, 18 by 13½ by 2½ in. (456 by 342 by 64 mm)
- J—Refractory fiber paper
- K—Silicon carbide plate, 13⅝ by 9 by ¾ in. (346 by 228 by 19 mm)
- L—Center calorimeter

FIG. 2 Monolithic Panel Specimen