



Designation: **F3097--15 F3097 – 15 (Reapproved 2021)**

Standard Practice for Installation of an Outside Sewer Service Cleanout through a Minimally Invasive Small Bore Vacuum Excavation¹

This standard is issued under the fixed designation F3097; the number immediately following the designation indicates the year of original adoption or, in the case of revision, the year of last revision. A number in parentheses indicates the year of last reapproval. A superscript epsilon (ϵ) indicates an editorial change since the last revision or reapproval.

1. Scope

1.1 This practice covers installation methods, test methods and required materials for the installation of an outside sewer service clean out, by means of a small vacuum excavated borehole. The utilization of this practice greatly reduces disruption to the general public and requires minimal restoration.

1.2 *Units*—The values stated in inch-pound units are to be regarded as standard. No other units of measurement are included in this standard.

1.3 *This standard does not purport to address all of the safety concerns, if any, associated with its use. It is the responsibility of the user of this standard to establish appropriate safety, health, and environmental practices and determine the applicability of regulatory limitations prior to use.*

1.4 *This international standard was developed in accordance with internationally recognized principles on standardization established in the Decision on Principles for the Development of International Standards, Guides and Recommendations issued by the World Trade Organization Technical Barriers to Trade (TBT) Committee.*

2. Referenced Documents

- 2.1 *ASTM Standards:*²
- C920 Specification for Elastomeric Joint Sealants
 - D1600 Terminology for Abbreviated Terms Relating to Plastics
 - D2855 Practice for the Two-Step (Primer and Solvent Cement) Method of Joining Poly (Vinyl Chloride) (PVC) or Chlorinated Poly (Vinyl Chloride) (CPVC) Pipe and Piping Components with Tapered Sockets
 - D3034 Specification for Type PSM Poly(Vinyl Chloride) (PVC) Sewer Pipe and Fittings
 - F412 Terminology Relating to Plastic Piping Systems

3. Terminology

3.1 Unless otherwise indicated, definitions are in accordance with Terminology F412, and abbreviations are in accordance with Terminology D1600.

¹ This practice is under the jurisdiction of ASTM Committee F17 on Plastic Piping Systems and is the direct responsibility of Subcommittee F17.67 on Trenchless Plastic Pipeline Technology.

Current edition approved May 15, 2015 July 1, 2021. Published June 2015 August 2021. Originally approved in 2015. Last previous edition approved in 2015 as F3097–15. DOI: 10.1520/F3097-15.10.1520/F3097-15R21

² For referenced ASTM standards, visit the ASTM website, www.astm.org, or contact ASTM Customer Service at service@astm.org. For *Annual Book of ASTM Standards* volume information, refer to the standard's Document Summary page on the ASTM website.



3.2 *Definitions of Terms Specific to This Standard:*

3.2.1 *adhesive/sealant*—an elastomeric bonding agent designed to provide a water activated, leak resistant flexible bond between a PVC pipe saddle and a lateral sewer service pipe.

3.2.2 *borehole* —a small diameter vacuum excavated hole.

3.2.3 *cleanout*—a fitting located on a lateral sewer service pipe having a vertical riser pipe extending therefrom to the surface providing access to the lateral sewer service pipe.

3.2.4 *cleanout riser pipe*—a section of pipe that is connected to the boss of a saddle and extends from the saddle to the surface.

3.2.5 *coring*—the process of remotely cutting a hole through the crown of a sewer service pipe such that the coupon is retrieved to establish communication from a cleanout riser pipe and a lateral sewer service pipe.

3.2.6 *coupon*—a disc shaped piece of the lateral sewer service pipe produced by coring.

3.2.7 *lateral sewer service pipe*—a sewer pipe that connects a building to a municipal, main sewer pipe in a lateral direction and collects sanitary waste or storm water.

3.2.8 *saddle*—a PVC saddle that encompasses more than 50% of a lateral sewer service pipe where the side walls of the saddle extend beyond the spring line of the host pipe. The saddle includes setoff tabs that allow for uniform distribution of the adhesive/sealant.

3.2.9 *setoff tabs*—Protruding tabs located on the underside of the saddle one located on each side of the saddle boss for the purpose of insuring a specific annulus between the host pipe and the saddle and a specific layer thickness of adhesive/sealant.

3.2.10 *sonde*—a device outfitted in a closed circuit video inspection camera that emits a signal in subterranean pipelines that is traceable by use of a locating receiver at surface.

4. Summary of Practice

ASTM F3097-15(2021)

<https://standards.iteh.ai/catalog/standards/sist/0a160f98-f1d2-495e-be37-052ce7c2c499/astm-f3097-152021>

4.1 The process of installing a cleanout through a minimally invasive excavation begins with locating the 4 in. or 6 in. sewer service lateral. This is accomplished by use of a CCTV outfitted with a locatable sonde and vacuum excavating a small borehole, providing access to the exterior surface of a lateral sewer service pipe. Once the lateral sewer service pipe has been exposed, a self-clamping saddle is prepared by applying a specified amount of adhesive/sealant to the underside of the saddle and a riser pipe is attached to the boss of the saddle. The prepared saddle is lowered into the small diameter bore hole until it contacts the lateral sewer service pipe; a downward force is applied to the riser pipe causing the side walls of the saddle to spread and encompass more than 50-percent of the host pipe. Surface restoration is minimal and in most cases is accomplished the same day the cleanout is installed.

5. Significance and Use

5.1 This practice is for use by designers and specifiers, regulatory agencies, owners, and inspection organizations who are involved in the installation of a sewer service cleanout

6. Components

6.1 The saddle shall be formed as a semi-circle and shall encompass more than 180-degrees of the pipe circumference. The saddle shall have an inner diameter equal to the outer diameter of the host pipe (see Fig. 1).

6.2 The riser pipe shall be PVC pipe in accordance with Specification D3034.

6.3 Adhesive/Sealant shall be in accordance with Specification C920.

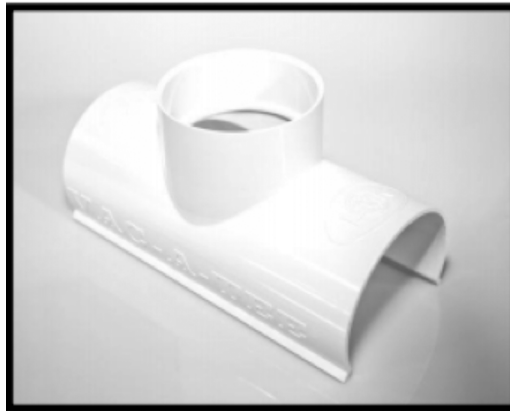


FIG. 1 Saddle greater than 180°

6.4 The solvent cement shall be in accordance with Practice [D2855](#).

7. Tools Required for Installation

7.1 *Vacuum excavation unit*—mobile piece of equipment that supplies sufficient volume of vacuum necessary to excavate a vertical bore hole.

7.2 *Coring equipment*—A suitable coring saw with an outer diameter 1/8 in. less than the inner diameter of the riser pipe with a cutting blade suitable for the specific pipe material on which the cleanout has been installed.

7.3 *Power head*—power device that rotates the coring saw.

7.4 *Extension rods*—extension shafts that connect the power head to the coring saw. Available in various lengths according to the depth of the service lateral pipe that the cleanout is being attached to.

7.5 *Video camera*—CCTV camera that's outfitted with a sonde locating device and a compatible receiver. The camera is suitable sewer pipe conditions.

7.6 *Water*—The amount of water required to perform the exfiltration test is outlined in [Table 1](#).

8. Procedure

8.1 The first step in installing a trenchless sewer service cleanout begins with locating the non-lined lateral sewer service pipe. A method utilized and associated with this installation process consists of inserting a video camera with an internal sonde into the

TABLE 1 Water Volume Required to Perform Leak Test

Depth of Lateral (ft)	Amount of Water Required (Gal)
6	15.68
7	18.29
8	20.90
9	23.51
10	26.15
11	28.73
12	31.36
13	33.96
14	36.58
15	39.18
16	41.80
17	44.40
18	47.02
19	49.63
20	52.25