



Designation: **F823–93 (Reapproved 2017) F823 – 22**

An American National Standard

Standard Specification for Desk, Log, Marine, Steel, with Cabinet¹

This standard is issued under the fixed designation F823; the number immediately following the designation indicates the year of original adoption or, in the case of revision, the year of last revision. A number in parentheses indicates the year of last reapproval. A superscript epsilon (ϵ) indicates an editorial change since the last revision or reapproval.

1. Scope

1.1 This specification covers the construction of marine log desks of steel construction with cabinets.

1.2 The values stated in inch-pound units are to be regarded as standard. The values given in parentheses are mathematical conversions to SI units that are provided for information only and are not considered standard.

1.3 *This international standard was developed in accordance with internationally recognized principles on standardization established in the Decision on Principles for the Development of International Standards, Guides and Recommendations issued by the World Trade Organization Technical Barriers to Trade (TBT) Committee.*

2. Referenced Documents

2.1 *ASTM Standards:*²

~~A366/A366M/A1008/A1008M Specification for Commercial Steel (CS) Sheet, Carbon, (0.15 Maximum Percent) Cold-Rolled Steel, Sheet, Cold-Rolled, Carbon, Structural, High-Strength Low-Alloy, High-Strength Low-Alloy with Improved Formability, Required Hardness, Solution Hardened, and Bake Hardenable (Withdrawn 2000)~~

D907 Terminology of Adhesives

F782 Specification for Doors, Furniture, Marine

F825 Specification for Drawers, Furniture, Marine, Steel

F826 Specification for Tops, Furniture, Marine, Steel

2.2 *AISC Manual:*³

AISC Wire and Sheet Metal Gauges Equivalent Thickness in Decimals of an Inch, U.S. Standard Gauge (USSG) for Uncoated Hot and Cold Rolled Sheets

3. Terminology

3.1 *Definitions of Terms Specific to This Standard:*

3.1.1 *log desk with cabinet*—a desk with attached cabinet located in various places aboard ship for making records and for storage. Log desk has a drawer with a writing surface at the top and a cabinet with adjustable shelves and doors below.

4. Ordering Information

4.1 Orders for items purchased under this specification shall include the following information:

¹ This specification is under the jurisdiction of ASTM Committee F25 on Ships and Marine Technology and is the direct responsibility of Subcommittee F25.03 on Outfitting and Deck Machinery.

Current edition approved Jan. 1, 2017 April 1, 2022. Published January 2017 April 2022. Originally approved in 1983. Last previous edition approved in 2017 as F823 – 93 (2010) (2017). DOI: 10.1520/F0823-93R17-10.1520/F0823-22.

² For referenced ASTM standards, visit the ASTM website, www.astm.org, or contact ASTM Customer Service at service@astm.org. For *Annual Book of ASTM Standards* volume information, refer to the standard's Document Summary page on the ASTM website.

³ Available from American Institute of Steel Construction (AISC), 130 E. Randolph St., Suite 2000, Chicago, IL 60601-6219, http://www.aisc.org.

4.1.1 Quantity.

4.1.2 *Paint:*

4.1.2.1 *Color*—Purchaser shall pick from manufacturer’s samples or submit sample chip of color desired.

4.1.2.2 Manufacturer’s standard baked enamel will be furnished unless otherwise required and indicated by the purchaser.

4.1.3 *Options for Tops:*

4.1.3.1 Unless otherwise specified in the ordering documents, the top supplied by the furniture manufacturer may be, at his option, Type I, II, III, or IV in accordance with Specification F826.

4.1.3.2 Color or pattern of top covering material shall be specified.

4.1.4 *Options for Drawers*—Drawer locks shall be furnished only when specified in ordering documents. Master keying of drawer locks will not be provided unless required and defined by the ordering documents. See Specification F825 for lock description.

4.1.5 *Options for Doors*—Door locks shall be furnished only when specified in ordering documents. Master keying of door locks will not be provided unless required and defined in the ordering documents. Doors shall be Type I in accordance with Specification F782.

4.1.6 If the total weight of the chest of drawers is required it shall be requested by the purchaser.

5. Materials and Manufacture

5.1 For typical design, see Fig. 1.

5.2 Sheet metal shall be in accordance with Specification ~~A366/A366M~~ A1008/A1008M, commercial quality.

5.2.1 Minimum sheet metal thickness shall be:

5.2.1.1 Sides and front rails ~~18 USSG (0.0478 in. or 1.2 mm)~~ 0.042 in. (1.06 mm).

5.2.1.2 Back ~~20 USSG (0.0359 in. or 0.9 mm)~~ 0.032 in. (0.81 mm).

5.2.1.3 Base frame ~~16 USSG (0.0598 in. or 1.5 mm)~~ 0.053 in. (1.34 mm).

5.3 *Joining of Metal Components:*

5.3.1 Metal components shall be joined by welding or gluing with a structural adhesive as defined in Terminology D907. The back panel may be riveted to case provided rivets are not visible after installation.

5.3.2 Joining shall be adequate to prevent racking of chest during handling.

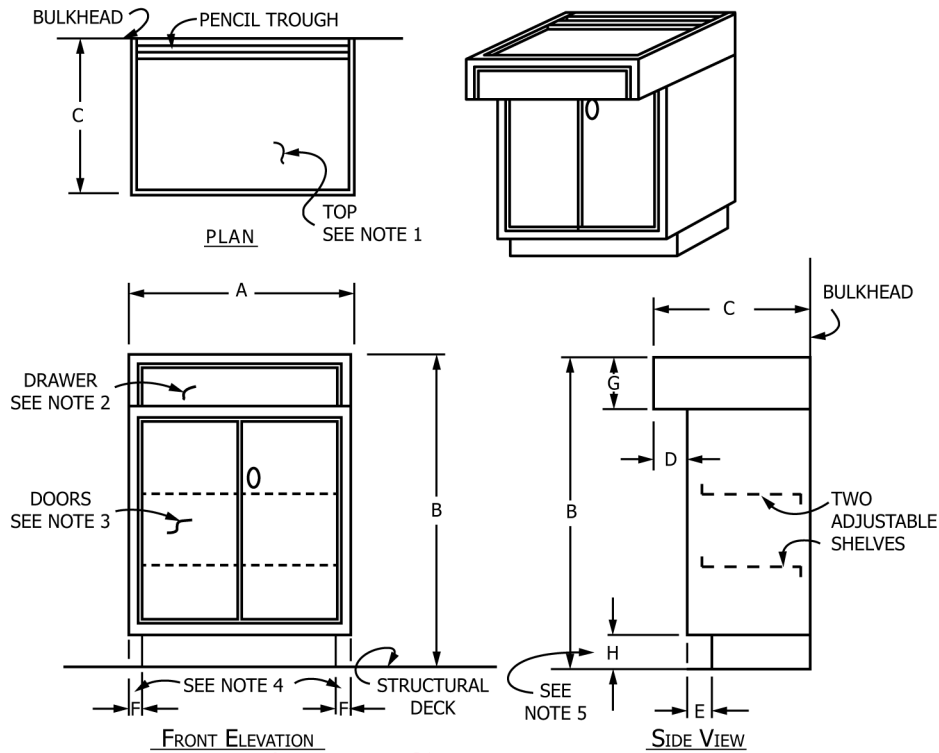
5.3.3 Spotwelds shall be spaced approximately 3 in. (76 mm) on centers.

5.3.4 Visible spotwelds, higher than the general surface of the adjacent metal, shall be ground flush.

5.3.5 Visible spotweld depressions shall be spot filled and sanded flush.

5.4 Side panels shall be stiffened suitably to prevent buckling or oil-canning.

5.5 Sound deadening shall be vermin proof and applied to back and inner face of sides of chest. Location and thickness of applied sound deadener shall be as required to sound-deaden chest.



NOTE 1—For description of Type I, II, III, and IV tops, see Specification F826.

NOTE 2—For description of drawers, see Specification F825.

NOTE 3—For description of Type I doors and available alternates, see Specification F782.

NOTE 4—If log desk is located in a corner, Dimension “F” next to this adjacent wall shall be 0 in. (0 mm). In all other cases, the minimum value for Dimension “F” shall be ¾ in. (19.05 mm).

NOTE 5—The minimum value for Dimension “H” shall be 4 in. (102 mm).

FIG. 1 Log Desk with Cabinet

ASTM F823-22

<https://standards.iteh.ai/catalog/standards/sist/03bc3182-c1f8-4482-bdb9-ef6f28acee58/astm-f823-22>

5.6 Top shall be manufactured in accordance with Specification F826.

5.7 Drawers shall be manufactured in accordance with Specification F825.

5.8 Doors shall be Type I, Grade A and shall be manufactured in accordance with Specification F782.

5.9 Cabinet section shall be provided with two adjustable shelves.

5.10 Top shall be provided with a pencil tray along back edge.

5.11 A furniture base shall be provided suitable for securing log desk to deck.

6. Performance Requirements

6.1 The completed log desk with cabinet, with top, drawers, and doors installed, shall satisfy the corresponding performance requirements outlined in Specifications F826, F825, and F782.

7. Dimensions

7.1 For dimensions, see Table 1.