



Designation: ~~D4006 – 16~~<sup>ε1</sup> D4006 – 22



Manual of Petroleum Measurement Standards (MPMS), Chapter 10.2

## Standard Test Method for Water in Crude Oil by Distillation<sup>1</sup>

This standard is issued under the fixed designation D4006; the number immediately following the designation indicates the year of original adoption or, in the case of revision, the year of last revision. A number in parentheses indicates the year of last reapproval. A superscript epsilon ( $\epsilon$ ) indicates an editorial change since the last revision or reapproval.

*This standard has been approved for use by agencies of the U.S. Department of Defense.*

---

~~<sup>ε1</sup> NOTE—Subsections 5.1 and X1.3.3.2 were revised editorially in November 2016.~~

---

### 1. Scope\*

1.1 This test method covers the determination of water in crude oil by distillation.

1.2 The values stated in SI units are to be regarded as standard. No other units of measurement are included in this standard.

1.3 *This standard does not purport to address all of the safety concerns, if any, associated with its use. It is the responsibility of the user of this standard to establish appropriate safety, health, and environmental practices and determine the applicability of regulatory limitations prior to use.* For specific warning statements, see ~~6.4~~<sup>7.1</sup> and A1.1.

1.4 *This international standard was developed in accordance with internationally recognized principles on standardization established in the Decision on Principles for the Development of International Standards, Guides and Recommendations issued by the World Trade Organization Technical Barriers to Trade (TBT) Committee.*

### 2. Referenced Documents

#### 2.1 ASTM Standards:<sup>2</sup>

- [D95 Test Method for Water in Petroleum Products and Bituminous Materials by Distillation \(API MPMS Chapter 10.5\)](#)
  - [D473 Test Method for Sediment in Crude Oils and Fuel Oils by the Extraction Method \(API MPMS Chapter 10.1\)](#)
  - [D665 Test Method for Rust-Preventing Characteristics of Inhibited Mineral Oil in the Presence of Water](#)
  - [D1796 Test Method for Water and Sediment in Fuel Oils by the Centrifuge Method \(Laboratory Procedure\) \(API MPMS Chapter 10.6\)](#)
  - [D4057 Practice for Manual Sampling of Petroleum and Petroleum Products \(API MPMS Chapter 8.1\)](#)
  - [D4175 Terminology Relating to Petroleum Products, Liquid Fuels, and Lubricants](#)
  - [D4177 Practice for Automatic Sampling of Petroleum and Petroleum Products \(API MPMS Chapter 8.2\)](#)
  - [D4928 Test Method for Water in Crude Oils by Coulometric Karl Fischer Titration \(API MPMS Chapter 10.9\)](#)
  - [E123 Specification for Apparatus for Determination of Water by Distillation](#)
- 2.2 *API Standards:*
- [MPMS Chapter 1 Terms and Definitions Database](#)
  - [MPMS Chapter 8.1 Manual Sampling of Petroleum and Petroleum Products \(ASTM Practice D4057\)](#)

<sup>1</sup> This test method is under the jurisdiction of ASTM Committee D02 on Petroleum Products, Liquid Fuels, and Lubricants and the API Committee on Petroleum Measurement and is the direct responsibility of Subcommittee D02.02 /COMQ the joint ASTM-API Committee on Hydrocarbon Measurement for Custody Transfer (Joint ASTM-API). This test method has been approved by the sponsoring committees and accepted by the Cooperating Societies in accordance with established procedures.

Current edition approved June 1, 2016; Oct. 1, 2022. Published July 2016; December 2022. Originally approved in 1981. Last previous edition approved in 2012 as ~~D4006 – 11~~ (2012) D4006 – 16<sup>ε1</sup>. DOI: ~~10.1520/D4006-16E01~~ 10.1520/D4006-22.

<sup>2</sup> For referenced ASTM standards, visit the ASTM website, www.astm.org, or contact ASTM Customer Service at service@astm.org. For *Annual Book of ASTM Standards* volume information, refer to the standard's Document Summary page on the ASTM website.

\*A Summary of Changes section appears at the end of this standard

MPMS Chapter 8.2 Automatic Sampling of Petroleum and Petroleum Products (ASTM Practice D4177)

MPMS Chapter 10.1 Test Method for Sediment in Crude Oils and Fuel Oils by the Extraction Method (ASTM Test Method D473)

MPMS Chapter 10.4 Determination of Water and/or Sediment in Crude Oil by the Centrifuge Method (Field Procedure)

MPMS Chapter 10.5 Test Method for Water in Petroleum Products and Bituminous Materials by Distillation (ASTM Test Method D95)

MPMS Chapter 10.6 Test Method for Water and Sediment in Fuel Oils by the Centrifuge Method (Laboratory Procedure) (ASTM Test Method D1796)

MPMS Chapter 10.9 Test Method for Water in Crude Oils by Coulometric Karl Fischer Titration (ASTM Test Method D4928)

### 3. Terminology

#### 3.1 Definitions:

3.1.1 For definitions of terms used in this test method, refer to Terminology D4175 and the API MPMS Chapter 1 Terms and Definitions Database.

### 4. Summary of Test Method

4.1 The sample is heated under reflux conditions with a water immiscible solvent which co-distills with the water in the sample. Condensed solvent and water are continuously separated in a trap—the water settles in the graduated section of the trap, and the solvent returns to the distillation flask.

### 5. Significance and Use

5.1 A knowledge of the water content of crude oil is important in the refining, purchase, sale, or transfer of crude oils.

5.2 This test method may not be suitable for crude oils that contain alcohols that are soluble in water. In cases where the impact on the results may be significant, the user is advised to consider using another test method, such as Test Method D4928 (API MPMS Chapter 10.9).

### 6. Apparatus

6.1 The preferred apparatus, shown in Fig. 1, consists of a glass distillation flask, a condenser, a graduated glass trap, and a heater. Other types of distillation apparatus are specified in Specification E123. Any of these apparatus will be acceptable for this test method provided it can be demonstrated that they operate within the precision established with the preferred apparatus.

6.1.1 *Distillation Flask*—A 1000 mL round-bottom, glass, distillation flask fitted with a 24/40 female taper joint shall be used. This flask receives a 5 mL calibrated, graduated water trap with 0.05 mL graduations. The trap will be fitted with a 400 mm Liebig condenser. A drying tube filled with desiccant (to prevent entrance of atmospheric moisture) is placed on top of the condenser.

6.1.2 *Heater*—Any suitable gas or electric heater that can uniformly distribute heat to the entire lower half of the flask may be used. An electric heating mantle is preferred for safety reasons.

6.1.3 The apparatus used in this test will be accepted when satisfactory results are obtained by the calibration technique described in Section 89.

### 7. Solvent

7.1 *Xylene*—reagent grade (**Warning**—Extremely flammable. Vapor harmful. See Annex A1.) A solvent blank will be established by placing 400 mL of solvent in the distillation apparatus and testing as outlined in Section 910. The blank will be determined to the nearest 0.025 mL and used to correct the volume of water in the trap as in Section 1011.

7.2 The xylene used in this procedure is generally a mixture of ortho, meta, and para isomers and may contain some ethyl benzene. The typical characteristics for this reagent are:

Color (APHA)	not more than 10
Boiling range	137 °C to 144 °C
Residue after evaporation	0.002 %

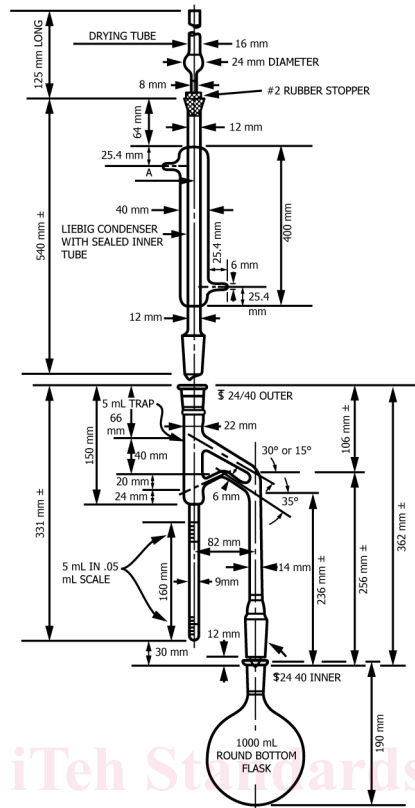


FIG. 1 Distillation Apparatus

iTeh Standards  
(<https://standards.itih.ai>)  
Document Preview

Sulfur compounds (as S)  
Substances darkened by H<sub>2</sub>SO<sub>4</sub>  
Water (H<sub>2</sub>O)  
Heavy metals (as Pb)  
Copper (Cu)  
Iron (Fe)  
Nickel (Ni)  
Silver (Ag)

0.003 %  
Color pass test  
0.02 %  
0.1 ppm  
0.1 ppm  
0.1 ppm  
0.1 ppm  
0.1 ppm

ASTM D4006-22

<https://standards.itih.ai/catalog/standards/sist/28648988-7eff-4c6e-8a46-043fc1b97ba2/astm-d4006-22>

## 8. Sampling, Test Samples, and Test Units

8.1 Sampling is defined as all steps required to obtain an aliquot of the contents of any pipe, tank, or other system and to place the sample into the laboratory test container.

8.1.1 *Laboratory Sample*—Only representative samples obtained as specified in Practice D4057 (API MPMS Chapter 8.1) and Practice D4177 (API MPMS Chapter 8.2) shall be used for this test method.

8.1.2 *Preparation of Test Samples*—The following sample handling procedure shall apply in addition to those covered in 7.1-18.1.1.

8.1.2.1 The sample size shall be selected as indicated below based on the expected water content of the sample:

Expected Water Content, weight or volume %	Approximate Sample Size, g or mL
50.1–100.0	5
<del>25.1–50.0</del>	<del>10</del>
25.1–50.0	10
<del>10.1–25.0</del>	<del>20</del>
10.1–25.0	20
<del>5.1–10.0</del>	<del>50</del>
5.1–10.0	50
<del>1.1–5.0</del>	<del>100</del>
1.1–5.0	100
<del>0.5–1.0</del>	<del>200</del>
0.5–1.0	200
less than 0.5	200

8.1.2.2 If there is any doubt about the uniformity of the mixed sample, determinations should be made on at least three test portions and the average result reported as the water content.

8.1.2.3 To determine water on a volume basis, measure mobile liquids in a 5 mL, 10 mL, 20 mL, 50 mL, 100 mL, or 200 mL calibrated, graduated cylinder (NBS Class A) depending on the sample size indicated in [7.1.2.18.1.2.1](#). Take care to pour the sample slowly into the graduated cylinder to avoid entrapment of air and to adjust the level as closely as possible to the appropriate graduation. Carefully pour the contents of the cylinder into the distillation flask and rinse the cylinder five times with portions of xylene equivalent to one-fifth of the capacity of the graduated cylinder and add the rinsings to the flask. Drain the cylinder thoroughly to ensure complete sample transfer.

8.1.2.4 To determine water on a mass basis, weigh a test portion of sample in accordance with [7.1.2.18.1.2.1](#), pouring the sample directly into the distillation flask. If a transfer vessel (beaker or cylinder) must be used, rinse it with at least five portions of xylene and add the rinsings to the flask.

## 9. Calibration

9.1 Calibrate both the trap and the entire assembly prior to initial use and after any equipment changes as indicated in [8.1.19.1.1](#) – [8.1.39.1.3](#). Additionally, calibrate both the trap and the entire assembly periodically, at a frequency not to exceed yearly.

9.1.1 Verify the accuracy of the graduation marks on the trap by adding 0.05 mL increments of distilled water, at 20 °C, from a 5 mL microburet or a precision micro-pipet readable to the nearest 0.01 mL. If there is a deviation of more than 0.050 mL between the water added and water observed, reject the trap or recalibrate.

<https://standards.iteh.ai/catalog/standards/sist/28648988-7eff-4c6e-8a46-043fc1b97ba2/astm-d4006-22>

9.1.2 Also calibrate the entire apparatus. Put 400 mL of dry (0.02 % water maximum) xylene in the apparatus and test in accordance with Section [910](#). When complete, discard the contents of the trap and add 1.00 mL ± 0.01 mL of distilled water from the buret or micro-pipet, at 20 °C, directly to the distillation flask and test in accordance with Section [910](#). Repeat [8.1.29.1.2](#) and add 4.50 mL ± 0.01 mL directly to the flask. The assembly of the apparatus is satisfactory only if trap readings are within the tolerances specified here:

Limits Capacity of Trap at 20 °C, mL	Volume of Water Added at 20 °C, mL	Permissible for Recovered Water at 20 °C, mL
5.00	1.00	1.00 ± 0.025
5.00	4.50	4.50 ± 0.025

9.1.3 A reading outside the limits suggests malfunctioning due to vapor leaks, too rapid boiling, inaccuracies in graduations of the trap, or ingress of extraneous moisture. These malfunctions must be eliminated before repeating [8.1.29.1.2](#).

## 10. Procedure

10.1 The precision of this test method can be affected by water droplets adhering to surfaces in the apparatus and therefore not settling into the water trap to be measured. To minimize the problem, all apparatus must be chemically cleaned at least daily to remove surface films and debris which hinder free drainage of water in the test apparatus. More frequent cleaning is recommended if the nature of the samples being run causes persistent contamination.

10.1.1 To determine water on a volume basis, proceed as indicated in [7.1.2.38.1.2.3](#). In addition to the xylene added to rinse the oil sample transfer device, add sufficient xylene to the flask to make the total xylene volume 400 mL.

10.1.2 To determine water on a mass basis, proceed as indicated in [7.1.2.48.1.2.4](#). In addition to the xylene added to rinse the oil sample transfer device, add sufficient xylene to the flask to make the total xylene volume 400 mL.

10.2 A magnetic stirrer is the most effective device to reduce bumping. Glass beads or other boiling aids, although less effective, have been found to be useful.

10.3 Assemble the apparatus as shown in [Fig. 1](#), making sure all connections are vapor and liquid-tight. It is recommended that glass joints not be greased. Insert a drying tube containing an indicating desiccant into the end of the condenser to prevent condensation of atmospheric moisture inside the condenser. Circulate water, between 20 °C and 25 °C, through the condenser jacket.

10.4 Apply heat to the flask. The type of crude oil being evaluated can significantly alter the boiling characteristics of the crude-solvent mixture. Heat should be applied slowly during the initial stages of the distillation (approximately ½ h to 1 h) to prevent bumping and possible loss of water from the system. (Condensate shall not proceed higher than three quarters of the distance up the condenser inner tube (Point A in [Fig. 1](#).) To facilitate condenser wash-down, the condensate should be held as close as possible to the condenser outlet. After the initial heating, adjust the rate of boiling so that the condensate proceeds no more than three quarters of the distance up the condenser inner tube. Distillate should discharge into the trap at the rate of approximately 2 drops to 5 drops per second. Continue distillation until no water is visible in any part of the apparatus, except in the trap, and the volume of water in the trap remains constant for at least 5 min. If there is a persistent accumulation of water droplets in the condenser inner tube, flush with xylene. (A jet spray washing tube, see [Fig. 2](#), or equivalent device is recommended.) The addition of an oil-soluble emulsion breaker at a concentration of 1000 ppm to the xylene wash helps dislodge the clinging water drops. After flushing, redistill for at least 5 min (the heat must be shut off at least 15 min prior to wash-down to prevent bumping). After wash-down, apply heat slowly to prevent bumping. Repeat this procedure until no water is visible in the condenser and the volume of water in the trap remains constant for at least 5 min. If this procedure does not dislodge the water, use the TFE-fluorocarbon scraper, pick shown in [Fig. 2](#), or equivalent device to cause the water to run into the trap.

10.5 When the carryover of water is complete, allow the trap and contents to cool to 20 °C. Dislodge any drops of water adhering to the sides of the trap with the TFE-fluorocarbon scraper or pick and transfer them to the water layer. Read the volume of the water in the trap. The trap is graduated in 0.05 mL increments, but the volume is estimated to the nearest 0.025 mL.

## 11. Calculation

11.1 Calculate the water in the sample as follows:

$$\text{Volume \%} = \frac{(A - B)}{C} \times 100 \quad (1)$$

$$\text{Volume \%} = \frac{(A - B)}{(M/D)} \times 100 \quad (2)$$

$$\text{Mass \%} = \frac{(A - B)}{M} \times 100 \quad (3)$$

where:

*A* = mL of water in trap,

*B* = mL of solvent blank,

*C* = mL of test sample,

*M* = g of test sample, and

*D* = density of sample, g/mL.

Volatile water-soluble material, if present, may be measured as water.

## 12. Report

12.1 Report the result as the water content to the nearest 0.025 %, reporting water content of less than 0.025 % as 0 %, and reference this Test Method D4006 (API MPMS Chapter 10.2) as the procedure used.

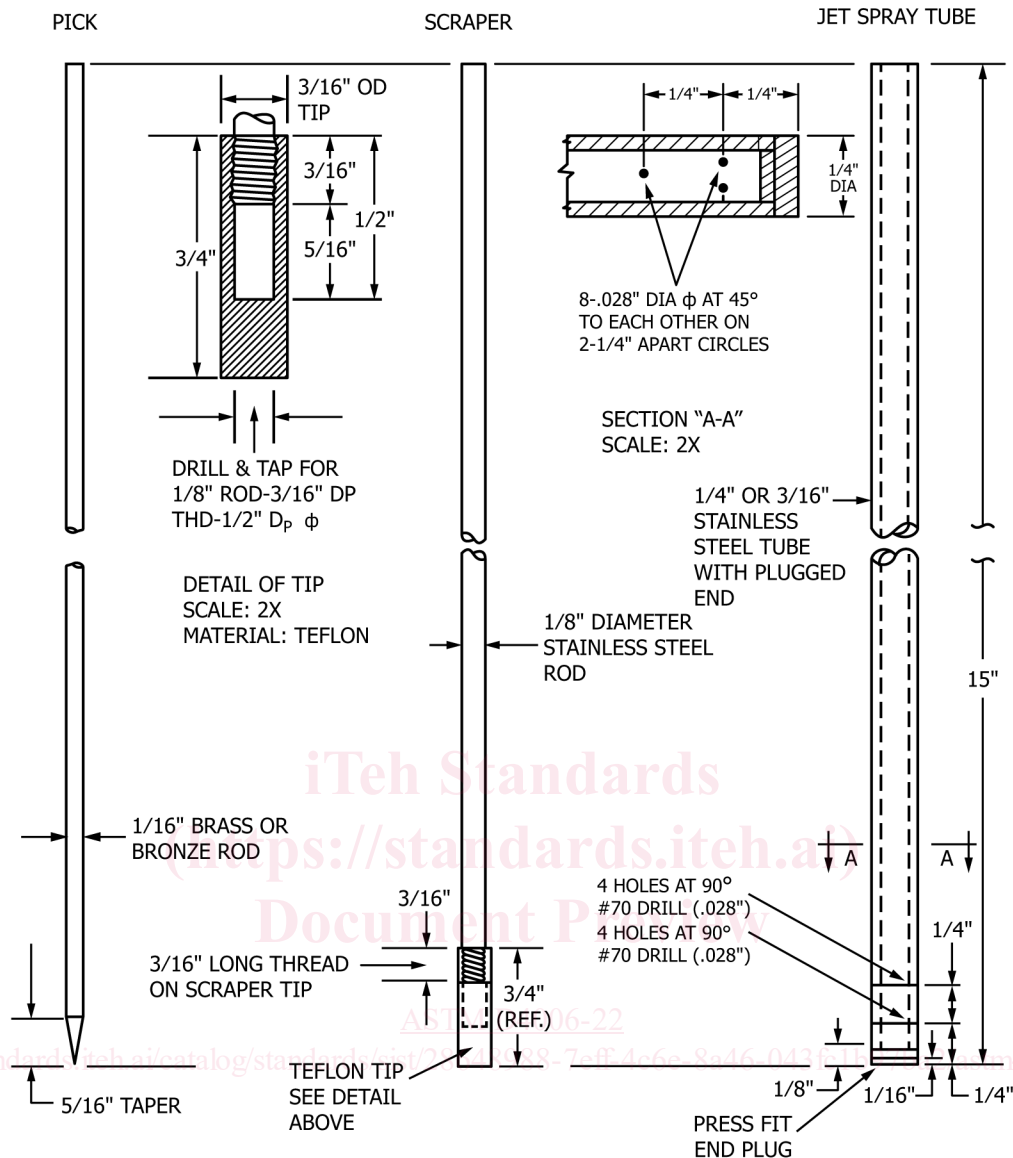


FIG. 2 Pick, Scraper, and Jet Spray Tube for Distillation Apparatus

### 13. Precision and Bias

13.1 The precision of this test method, as obtained by statistical examination of interlaboratory test results in the range from 0.01 % to 1.0 %, is described in [12.1-113.1.1](#) and [12.1-213.1.2](#).

13.1.1 *Repeatability*—The difference between successive test results, obtained by the same operator with the same apparatus under constant operating conditions on identical test material, would, in the long run, in the normal and correct operation of the test method, exceed the following value in only one case in twenty:

From 0.0 % to 0.1 % water, see [Fig. 3](#).  
Greater than 0.1 % water, repeatability is constant at 0.08.

13.1.2 *Reproducibility*—The difference between the two single and independent test results obtained by different operators working in different laboratories on identical test material, would, in the long run, in the normal and correct operation of the test method, exceed the following value in only one case in twenty:

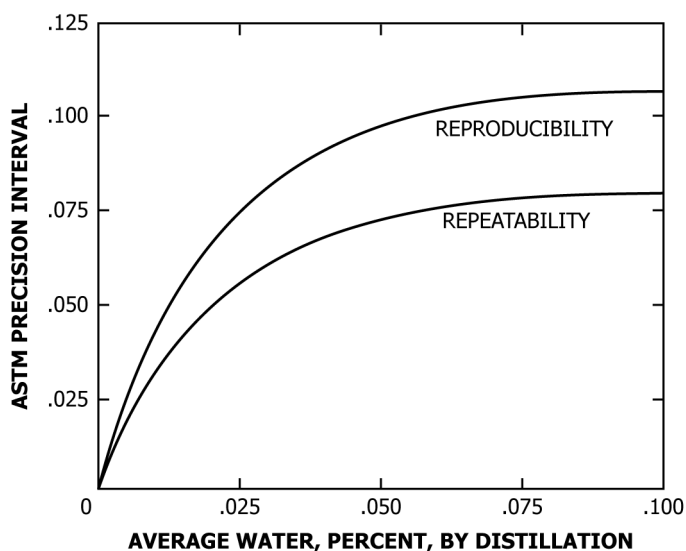


FIG. 3 Basic Sediment and Water Precision

From 0.0 % to 0.1 % water, see Fig. 3  
 Greater than 0.1 % water, reproducibility is constant at 0.11.

14. Keywords

14.1 crude oil; distillation; water

iTeh Standards  
 (https://standards.itih.ai)  
 ANNEX  
 Document Preview  
 (Mandatory Information)

A1. WARNING STATEMENT

[ASTM D4006-22](https://standards.itih.ai/catalog/standards/sist/28648988-7eff-4c6e-8a46-043fc1b97ba2/astm-d4006-22)

<https://standards.itih.ai/catalog/standards/sist/28648988-7eff-4c6e-8a46-043fc1b97ba2/astm-d4006-22>

A1.1 Xylene

A1.1.1 Keep away from heat, sparks, and open flame.

A1.1.2 Keep container closed.

A1.1.3 Use with adequate ventilation.

A1.1.4 Avoid breathing of vapor or spray mist.

A1.1.5 Avoid prolonged or repeated contact with skin.