



Designation: D7328 – 23

# Standard Test Method for Determination of Existent and Potential Inorganic Sulfate and Total Inorganic Chloride in Fuel Ethanol by Ion Chromatography Using Aqueous Sample Injection<sup>1</sup>

This standard is issued under the fixed designation D7328; the number immediately following the designation indicates the year of original adoption or, in the case of revision, the year of last revision. A number in parentheses indicates the year of last reapproval. A superscript epsilon ( $\epsilon$ ) indicates an editorial change since the last revision or reapproval.

## 1. Scope\*

1.1 This test method covers an ion chromatographic procedure for the determination of the existent inorganic and potential sulfate and total inorganic chloride content in hydrous and anhydrous denatured ethanol to be used in motor fuel applications. It is intended for the analysis of ethanol samples containing between 0.55 mg/kg and 20 mg/kg of existent inorganic sulfate, 4.0 mg/kg to 20 mg/kg of potential inorganic sulfate, and 0.75 mg/kg to 50 mg/kg of total inorganic chloride.

1.2 The values stated in SI units are to be regarded as standard. No other units of measurement are included in this standard.

1.3 *This standard does not purport to address all of the safety concerns, if any, associated with its use. It is the responsibility of the user of this standard to establish appropriate safety, health, and environmental practices and determine the applicability of regulatory limitations prior to use.* Material Safety Data Sheets are available for reagents and materials. Review them for hazards prior to usage

1.4 *This international standard was developed in accordance with internationally recognized principles on standardization established in the Decision on Principles for the Development of International Standards, Guides and Recommendations issued by the World Trade Organization Technical Barriers to Trade (TBT) Committee.*

## 2. Referenced Documents

2.1 *ASTM Standards:*<sup>2</sup>

**D1193 Specification for Reagent Water**

<sup>1</sup> This test method is under the jurisdiction of ASTM Committee D02 on Petroleum Products, Liquid Fuels, and Lubricants and is the direct responsibility of Subcommittee D02.03 on Elemental Analysis.

Current edition approved March 1, 2023. Published April 2023. Originally approved in 2007. Last previous edition approved in 2022 as D7328 – 22. DOI: 10.1520/D7328-23.

<sup>2</sup> For referenced ASTM standards, visit the ASTM website, www.astm.org, or contact ASTM Customer Service at service@astm.org. For *Annual Book of ASTM Standards* volume information, refer to the standard's Document Summary page on the ASTM website.

**D4052 Test Method for Density, Relative Density, and API Gravity of Liquids by Digital Density Meter**

**D4057 Practice for Manual Sampling of Petroleum and Petroleum Products**

**D4175 Terminology Relating to Petroleum Products, Liquid Fuels, and Lubricants**

**D4177 Practice for Automatic Sampling of Petroleum and Petroleum Products**

**D5827 Test Method for Analysis of Engine Coolant for Chloride and Other Anions by Ion Chromatography**

**D6299 Practice for Applying Statistical Quality Assurance and Control Charting Techniques to Evaluate Analytical Measurement System Performance**

**D6792 Practice for Quality Management Systems in Petroleum Products, Liquid Fuels, and Lubricants Testing Laboratories**

**D7318 Test Method for Existent Inorganic Sulfate in Ethanol by Potentiometric Titration**

**D7319 Test Method for Determination of Existent and Potential Sulfate and Inorganic Chloride in Fuel Ethanol and Butanol by Direct Injection Suppressed Ion Chromatography**

2.2 *Other Standard:*

**ISO/CEN15492 Ethanol as a Blending Component for Petrol—Determination of Inorganic Chloride—Ion Chromatographic Method**<sup>3</sup>

## 3. Terminology

3.1 *Definitions:*

3.1.1 For definitions of terms used in this test method, refer to Terminology **D4175**.

3.2 *Definitions of Terms Specific to This Standard:*

3.2.1 *existent inorganic sulfate, n*—inorganic sulfate species actually present in the sample at the time of analysis with no oxidation treatment.

3.2.2 *inorganic chloride, n*—chloride present as hydrochloric acid, ionic salts of this acid, or mixtures of these.

<sup>3</sup> Available from International Organization for Standardization (ISO), 1 rue de Varembe, Case postale 56, CH-1211, Geneva 20, Switzerland, http://www.iso.ch.

\*A Summary of Changes section appears at the end of this standard

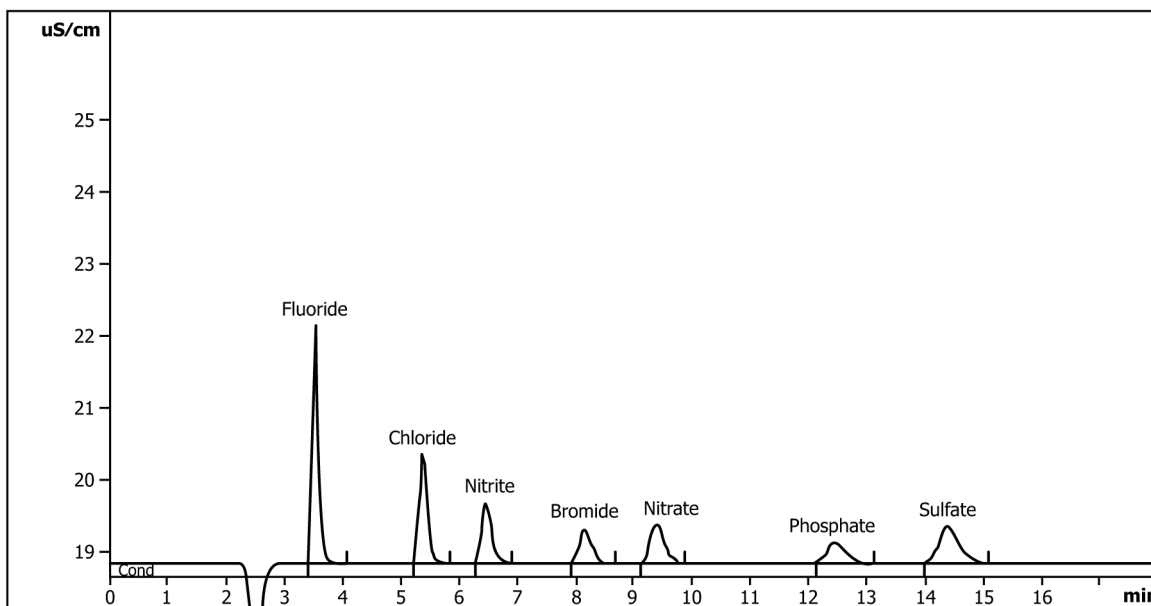


FIG. 1 Typical Ion Chromatogram of a Solution Containing 1 mg/kg of Various Anions in Water

3.2.3 *inorganic sulfate, n*—sulfate species present as sulfuric acid, ionic salts of this acid, or mixtures of these.

3.2.4 *potential sulfate, n*—total inorganic sulfate species present after the sample has been reacted with an oxidizing agent.

#### 4. Summary of Test Method

4.1 For existent inorganic sulfate and chloride, a small volume of a sample is evaporated to dryness and reconstituted to the initial sample volume with deionized water, and injected into an ion chromatograph consisting of appropriate ion exchange columns, suppressor and a conductivity detector. For potential sulfate, a small volume of a sample is evaporated to dryness and reconstituted to the initial sample volume with 0.90 % hydrogen peroxide solution in water, and injected into an ion chromatograph. Ions are separated based on their affinity for exchange sites of the resin with respect to the resin's affinity for the eluent. The suppressor increases the sensitivity of the method by both increasing the conductivity of the analytes and decreasing the conductivity of the eluent. The suppressor converts the eluent and the analytes to the corresponding hydrogen form acids. Anions in the aqueous sample are quantified by integration of their responses compared with an external calibration curve, calculated as mg/L for each ion. The calibration standards are prepared from suitable salts dissolved in water solutions. Existent or potential inorganic sulfate and chloride concentrations may be calculated as mg/kg by measuring the density of the original sample.

4.2 Similar methods for chloride and sulfate determinations can be found in Test Method D5827 for engine coolant, and for ethanol in ISO/CEN15492, Test Method D7319 by ion chromatography with direct sample injection, and for sulfate only in Test Method D7318 by potentiometric lead titration.

#### 5. Significance and Use

5.1 Sulfates and chlorides may be found in filter plugging deposits and fuel injector deposits. The acceptability for use of the fuel components and the finished fuels depends on the sulfate and chloride content.

5.2 Existent and potential inorganic sulfate and total chloride content, as measured by this test method, can be used as one measure of the acceptability of gasoline components for automotive spark-ignition engine fuel use.

#### 6. Interferences

6.1 Interferences can be caused by substances with similar ion chromatographic retention times, especially if they are in high concentration compared to the analyte of interest. Sample dilution or standard addition can be used to minimize or resolve most interference problems.

6.2 A water dip (system void, negative peak as shown in Fig. 1) may cause interference with some integrators. Usually, for chloride and sulfate determinations, the water dip should not be a problem since the chloride and sulfate peaks are far enough away from the water dip.

6.3 Given the trace amounts of chloride and sulfate determined by this method, interferences can be caused by contamination of glassware, eluents, reagents, etc. Great care must be taken to ensure that contamination is kept at the lowest possible levels. The use of powder-free gloves is highly recommended to prevent sample contamination.

#### 7. Apparatus

7.1 *Analytical Balance*, at least 2000 g capacity, capable of weighing accurately to 0.01 g.

7.1.1 *Analytical Balance*, at least 100 g capacity, capable of weighing accurately to 0.0001 g.

7.2 *Drying Oven*, controlled at  $110\text{ }^{\circ}\text{C} \pm 5\text{ }^{\circ}\text{C}$  for drying sodium sulfate and sodium chloride.

7.3 *Desiccator*, containing freshly activated silica gel (or equivalent desiccant) with moisture content indicator.

7.4 *Pipettes or Volumetric Transferring Devices*, Class A glass pipettes or their equivalent of 2.0 cc capacity or automatic pipettes fitted with disposable polypropylene tips.

7.4.1 *Plastic Syringe*, 10 cc disposable, optionally fitted with a  $0.2\text{ }\mu\text{m}$  syringe filter (must be chloride and sulfate-free).

7.5 *Volumetric Flask*, Class A of 1 L capacity and Class A of 10 mL capacity.

7.6 *Ion Chromatograph*, Analytical system with all required accessories including syringes, columns, suppressor, gases, and detector.

7.6.1 *Injection System*, capable of delivering  $25\text{ }\mu\text{L}$  with a precision better than 1 %.

7.6.2 *Pumping System*, capable of delivering mobile phase flows between  $0.5\text{ mL/min}$  and  $1.5\text{ mL/min}$  with a precision better than 5 %.

7.6.3 *Guard Column*, for protection of the analytical column from strongly retained constituents. Better separations are obtained with greater separating power.

7.6.4 *Anion Separator Column*, capable of producing satisfactory analyte separation (see Fig. 1).

7.6.5 *Anion Suppressor Device*, micro membrane suppressor or equivalent. A cation exchange column in the hydrogen form has been used successfully, but it will periodically need to be regenerated as required. This is indicated by a high background conductivity and low analyte response.

7.6.6 *Conductivity Detector*, low volume ( $<2\text{ }\mu\text{L}$ ) and flow, temperature compensated, capable of at least  $0\text{ }\mu\text{S/cm}$  to  $1000\text{ }\mu\text{S/cm}$  on a linear scale.

7.6.7 *Integrator or Chromatography Data System Software*, capable of measuring peak areas and retention times, and correcting the data according to the baseline of the chromatogram.

7.7 *Gloves*, powder-free examination type.

7.8 *Hot Block*, aluminum, capable of being heated to  $65\text{ }^{\circ}\text{C}$  with suitable holes to hold 15 mL glass vials, with a method of flowing nitrogen over inserted samples.

7.9 *Glass Vials*, 15 mL with screw top.

## 8. Reagents

8.1 *Purity of Reagents*—Reagent grade or higher purity chemicals shall be used for the preparation of all samples, standards, eluents, and regenerator solutions. Unless otherwise indicated, it is intended that all reagents conform to the specifications of the Committee on Analytical Reagents of the American Chemical Society, where such specifications are available.<sup>4</sup> Other grades may be used, provided it is first

ascertained that the reagent is of sufficiently high purity to permit its use without lessening the accuracy of the determination.

8.2 *Purity of Water*—Unless otherwise indicated, reference to water shall be understood to mean reagent water as defined by Type I in Specification D1193. For eluent preparation and handling, comply with all ion chromatograph instrument and column vendor requirements (for example, filtering, degassing, etc.).

8.3 *Eluent Buffer Solution*—The eluent solution used depends on the systems or analytical columns that are used (contact instrument and column vendors). For the chromatograms in Fig. 1, the following eluent buffer was used: Sodium bicarbonate ( $\text{NaHCO}_3$ ) 1.7 mM and sodium carbonate ( $\text{Na}_2\text{CO}_3$ ) 1.8 mM. Dissolve  $2.8563\text{ g} \pm 0.0005\text{ g}$  of  $\text{NaHCO}_3$  and  $3.8157\text{ g} \pm 0.0005\text{ g}$  of  $\text{Na}_2\text{CO}_3$  in reagent water in a 1 L Type A volumetric flask and dilute to volume. Dilute 100 mL of this concentrate to 2000 mL with reagent water for the final working eluent solution. Other volumes of stock solution may be prepared using appropriate ratios of reagents. Follow the specific guidelines for this solution from the vendor of the column being used. Alternatively, this solution can be purchased from a qualified vendor.

8.4 *Suppressor Solution for Membrane Suppressor*, 0.025 N sulfuric acid. Carefully add 13.7 mL of reagent grade sulfuric acid (relative density 1.84) to approximately 500 mL reagent water in a 1 L volumetric flask. (**Warning**—This will generate a very hot solution. Allow it to cool before diluting to 1000 mL volume. Never add water to concentrated acid!) Dilute to 1000 mL with reagent water, and label this solution as 0.50 N sulfuric acid. Dilute 100 mL of this concentrate to 2000 mL with reagent water for the final working suppressor solution. Other volumes of stock solution may be prepared using appropriate ratios of reagents. Follow the specific guidelines for this solution from the vendor of the column being used.

8.5 *Sodium Sulfate*, anhydrous, reagent grade, 99 % minimum purity. (**Warning**—Do not ingest; avoid unnecessary exposure.)

8.6 *Sodium Chloride*, ACS reagent grade, 99 % minimum purity.

8.7 *Ethanol*, denatured with methanol, formula 3A or histological grade ethanol, anhydrous, denatured with ethyl acetate, methylisobutyl ketone and hydrocarbon naphtha. (**Warning**—Flammable; toxic; may be harmful or fatal if ingested or inhaled; avoid skin contact.)

8.8 *Hydrogen Peroxide Solution*, 30 %, commercially available 30 % hydrogen peroxide solution.

8.9 *Nitrogen Gas*, 99.99 mol % pure, free of hydrocarbons.

## 9. Preparation of Standard Solutions

### 9.1 Stock Solutions:

9.1.1 *Sulfate Stock Solution*, approximately  $2000\text{ mg/L}$ —To ensure dryness, place anhydrous sodium sulfate (5 g) in a drying oven at  $110\text{ }^{\circ}\text{C}$  for at least an hour, cool and store in a desiccator. Accurately weigh 2.96 g anhydrous sodium sulfate to the nearest tenth of a milligram and transfer to a 1 L

<sup>4</sup> ACS Reagent Chemicals, Specifications and Procedures for Reagents and Standard-Grade Reference Materials, American Chemical Society, Washington, DC. For suggestions on the testing of reagents not listed by the American Chemical Society, see *Analar Standards for Laboratory Chemicals*, BDH Ltd., Poole, Dorset, U.K., and the *United States Pharmacopeia and National Formulary*, U.S. Pharmacopeial Convention, Inc. (USPC), Rockville, MD.

**TABLE 1 Volumetric Preparation of Chloride and Sulfate Standards in Type II Water**

Chloride and Sulfate Standards mg Chloride and Sulfate (each)/L water	Chloride Stock Solution mL	Sulfate Stock Solution mL
50 Cl <sup>-</sup> only	25	...
20	10	10
10	5	5
5	2.5	2.5
1	0.5	0.5
0.5	0.25	0.25
0.3	0.15	0.15

volumetric flask. Add Type I water to dissolve the sodium sulfate and make to volume. Calculate the concentration of sulfate in the solution according to Eq 1. Other volumes of stock solution may be prepared using the appropriate ratio of reagents.

$$\text{stock sulfate (mg/L)} = (\text{g Na}_2\text{SO}_4) (0.6764) (1000 \text{ mg/g})/1 \text{ L} \quad (1)$$

where:

$$\begin{aligned} \text{g Na}_2\text{SO}_4 &= \text{weight in grams of Na}_2\text{SO}_4 \text{ dissolved in 1 L, and} \\ 0.6764 &= \text{weight percent sulfate in Na}_2\text{SO}_4. \end{aligned}$$

**9.1.2 Chloride Stock Solution, approximately 2000 mg/L**—To ensure dryness, place sodium chloride (5 g) in a drying oven at 110 °C for at least an hour, cool and store in a desiccator. Accurately weigh 3.30 g dried sodium chloride to the nearest tenth of a milligram and transfer to a 1 L volumetric flask. Add Type I water to dissolve the sodium chloride and make to volume. Calculate the concentration of chloride in the solution according to Eq 2. Other volumes of stock solution may be prepared using the appropriate ratio of reagents.

$$\text{stock chloride (mg/L)} = (\text{g NaCl}) (0.6068) (1000 \text{ mg/g})/1 \text{ L} \quad (2)$$

where:

$$\begin{aligned} \text{g NaCl} &= \text{weight in grams of NaCl dissolved in 1 L, and} \\ 0.6068 &= \text{weight percent chloride in NaCl.} \end{aligned}$$

**9.2 Chloride and Sulfate Standards in Water**—Type I water and sulfate and chloride stock solutions are added to a 1 L glass volumetric flask according to Table 1 to achieve the desired standard. These standard solutions should be discarded and remade every month.

9.2.1 Chloride and sulfate stock solutions from 9.1 are added quantitatively into the flask, mixed quantitatively with Type I water according to Table 1. Be very careful to measure the exact volumes of the sulfate and chloride stock solutions that are added to the flask, and to fill the flask to 1.00 L with Type I water. The sulfate and chloride concentrations of each standard are calculated according to Eq 3(a) and Eq 3(b).

$$\text{sulfate in standard (mg/L)} = Va \times Ca/V \quad (a) \quad (3)$$

$$\text{chloride in standard (mg/L)} = Vb \times Cb/V \quad (b)$$

where:

$$Va = \text{volume of sulfate stock solution (for example, Table 1, Column 3), in mL,}$$

$$Ca = \text{concentration of sulfate stock (Eq 1), in mg/L,}$$

$$Vb = \text{volume of chloride stock solution (for example, Table 1, Column 2), in mL,}$$

$$Cb = \text{concentration of chloride stock (Eq 2), in mg/L, and}$$

$$V = \text{final volume of standard solution, in L.}$$

9.2.2 Multiples or fractions of Table 1 values can be used to prepare different total volumes (V) of standards, using Eq 3(a) and Eq 3(b) to calculate standard ion concentrations.

NOTE 1—Alternatively, commercially available stock calibration solutions can be used, provided that the solutions are traceable to primary stock solutions or certified reference materials, and are free from other analytes.

**9.3 Hydrogen Peroxide Solution, 0.90 %**—Carefully pipette 3.0 mL of the 30 % hydrogen peroxide reagent into a 100 mL volumetric. Add Type I water to make to volume.

NOTE 2—Hydrogen peroxide will degrade in aqueous solution, therefore prepare fresh 0.90 % solution daily.

## 10. Calibration

10.1 Set up the ion chromatograph according to the manufacturer's instructions. No specific parameters are given here since different instruments may require different eluents, flow conditions, and instrument settings. Calibrate the ion chromatograph with at least five levels of sulfate and chloride, starting near but above the minimum detection limit, and further defining the working range in samples to be analyzed. The concentrations of calibrant solutions used shall bracket the expected range for the samples to be analyzed. One or more mid-range standards shall be used to verify the linearity of the calibration plot.

10.1.1 Typical ion chromatographic conditions (conditions used to generate Fig. 1 chromatograms):

Flow: 1.5 mL/min

Sample loop: 25 µL

Suppressor flow: 2 mL/min

10.1.1.1 Other analytical conditions may be used per the manufacturer's instructions. It is important that the resulting chromatogram contain chloride and sulfate peaks with baseline separation like that shown in Fig. 1. If present in sufficient quantity, other anions can interfere with the chloride and sulfate measurements.

NOTE 3—The sample loop volume will vary based on the column capacity, sensitivity, and other factors. Refer to vendor ion chromatography equipment manuals and column information for machine-specific details.

10.1.2 Analytical calibration plots shall be established at only one detector scale setting in order to prevent a change of slope affecting the analytical curve.

10.2 The analytical calibration plot shall be verified daily or whenever samples are to be run, prior to the analysis of samples to verify the system resolution, calibration, and sensitivity as part of the quality verification process (see Section 14).

10.3 The sulfate and chloride calibration plots shall be rerun after any change of the ion chromatography eluent solution (8.3), to reestablish ion retention times and resolution.

10.4 Measurement of the calibration standards. Inject 25 µL of each calibration standard solution (9.2) into the ion



## IC Sulfate Calibration

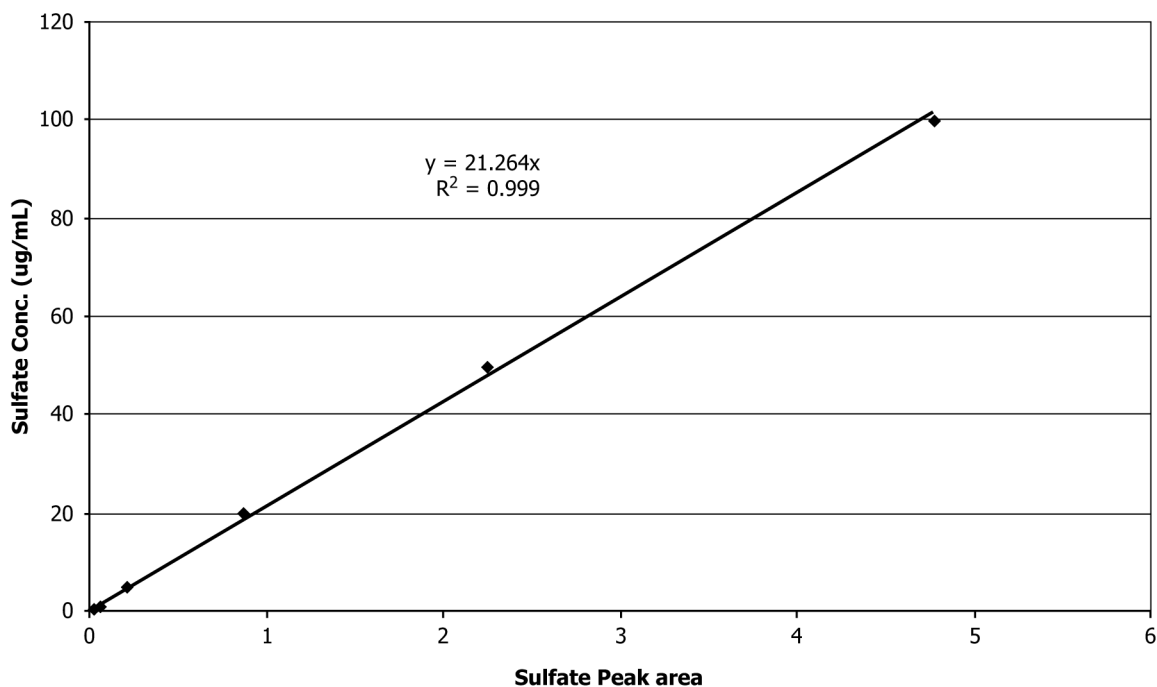


FIG. 2 Typical Sulfate Calibration Plot

chromatograph, and measure the areas of the peaks corresponding to the sulfate and chloride ions. An ion chromatogram of a 1 mg/L calibration solution is shown in Fig. 1 (other anions, if present, will elute as shown).

10.5 Construct the calibration plots from the peak area measurements by plotting the peak area counts against the sulfate and chloride ion concentrations. Use linear regression to determine the best straight line calibration, the plots should each have a linear least squares correlation coefficients of 0.99 or greater, see Figs. 2 and 3. The response factor for each ion,  $R_f$ , is the slope of the calibration plot straight line, in mg/L/(area count).

NOTE 4—If the plot of the peak area values least squares correlation is less than 0.99, the instrument and calibration solutions should be checked for errors, and if necessary, the calibration procedure should be repeated starting from Section 9.

## 11. Procedure

11.1 Obtain samples in accordance with Practice D4057 or Practice D4177. Samples should be well-mixed to ensure homogeneity. A representative portion shall be taken from each sample for analysis. Samples should be collected in (preferably glass or polyethylene) containers with closures that seal well to prevent evaporation. Sample containers shall not contain any residual or extractable sulfate or chloride. If containers have been cleaned and rinsed with water, they shall be thoroughly rinsed with Type I reagent water and dried prior to use.

11.1.1 Thoroughly mix the samples in their containers immediately prior to withdrawal of the test specimen.

11.1.2 Samples may be analyzed for either or both existent and potential inorganic sulfate, as well as total chloride.

11.2 Set up the ion chromatograph in accordance with the manufacturer's instructions.

11.2.1 Equilibrate the system by pumping eluent for 15 min to 30 min, until a stable baseline is obtained.

11.3 Start the chromatographic run in accordance with the manufacturer's instructions.

### 11.4 Existent Inorganic Sulfate and Total Chloride:

11.4.1 Carefully add 2.00 mL of the ethanol test specimen into a clean, dry, tared 15 mL glass vial without its screw cap closure. See Note 5.

NOTE 5—Larger amounts of test specimen may be prepared (as needed for autosampler use) as long as the preparation maintains the prescribed ratio of components. Preparation of larger test specimen might increase drying time. Precision was determined with 2.00 mL aliquots.

11.4.2 Place the vial with sample in a hot block at 65 °C and blow a steady stream of nitrogen gas over the sample at 2 mL/min to 3 mL/min flow. Allow the sample to dry completely, this may take 5 min to 10 min. When all of the liquid is gone, remove the vial from the hot block and allow it to cool to room temperature (60 °F to 80 °F).

NOTE 6—It is possible that a slight oily residue from the ethanol denaturant could remain. Do not worry about this residue if it is a thin film, as any sulfide or chloride in it will be extracted into the water phase.

NOTE 7—Various commercial apparatus are used to evaporate the sample. Depending on the apparatus used, the flow can be adjusted to optimize the evaporation.

NOTE 8—The purpose of the nitrogen is to sweep the ethanol vapors away from the sample tube so they do not condense back into the sample. There should be enough flow to sweep the ethanol vapors without creating turbulence in the sample and possible loss of analyte. When the flow gets too high, the cooling effect from the nitrogen gas can work against the