



Designation: C426 – 23

Standard Test Method for Linear Drying Shrinkage of Concrete Masonry Units¹

This standard is issued under the fixed designation C426; the number immediately following the designation indicates the year of original adoption or, in the case of revision, the year of last revision. A number in parentheses indicates the year of last reapproval. A superscript epsilon (ϵ) indicates an editorial change since the last revision or reapproval.

This standard has been approved for use by agencies of the U.S. Department of Defense.

1. Scope*

1.1 This test method covers a routine standardized procedure for determining the linear drying shrinkage of concrete masonry units or related concrete units under specified accelerated drying conditions.

1.2 The text of this test method references notes and footnotes that provide explanatory material. These notes and footnotes (excluding those in tables and figures) shall not be considered as requirements of the standard.

1.3 The values stated in inch-pound units are to be regarded as standard. The values given in parentheses are mathematical conversions to SI units that are provided for information only and are not considered standard.

1.4 *This standard does not purport to address all of the safety concerns, if any, associated with its use. It is the responsibility of the user of this standard to establish appropriate safety, health, and environmental practices and determine the applicability of regulatory limitations prior to use.*

1.5 *This international standard was developed in accordance with internationally recognized principles on standardization established in the Decision on Principles for the Development of International Standards, Guides and Recommendations issued by the World Trade Organization Technical Barriers to Trade (TBT) Committee.*

2. Referenced Documents

2.1 *ASTM Standards:*²

C490/C490M Practice for Use of Apparatus for the Determination of Length Change of Hardened Cement Paste, Mortar, and Concrete

C1093 Practice for Accreditation of Testing Agencies for Masonry

¹ This test method is under the jurisdiction of ASTM Committee C15 on Manufactured Masonry Units and is the direct responsibility of Subcommittee C15.03 on Concrete Masonry Units and Related Units.

Current edition approved June 1, 2023. Published June 2023. Originally approved in 1958. Last previous edition approved in 2022 as C426 – 22. DOI: 10.1520/C0426-23.

² For referenced ASTM standards, visit the ASTM website, www.astm.org, or contact ASTM Customer Service at service@astm.org. For *Annual Book of ASTM Standards* volume information, refer to the standard's Document Summary page on the ASTM website.

C1232 Terminology for Masonry

2.2 *ANSI Standard:*

B94.11M—1993 Twist Drills³

3. Terminology

3.1 Terminology defined in Terminology C1232 shall apply for this test method.

3.2 *Definitions of Terms Specific to This Standard:*

3.2.1 *linear drying shrinkage, n*—in this test method, the change in linear dimension of the test specimen due to drying from a saturated condition to an equilibrium weight and length under specified accelerated drying conditions.

4. Significance and Use

4.1 This test method is intended to evaluate the drying shrinkage characteristics of a given unit. The results of this laboratory method are considered in determining concrete masonry crack control provisions.

NOTE 1—The testing laboratory performing this test method should be evaluated in accordance with Practice C1093.

5. Apparatus

5.1 *Strain Gauge*—The instruments for measuring linear drying shrinkage shall be so designed as to permit or provide the conditions described in 5.1.1 through 5.1.5.

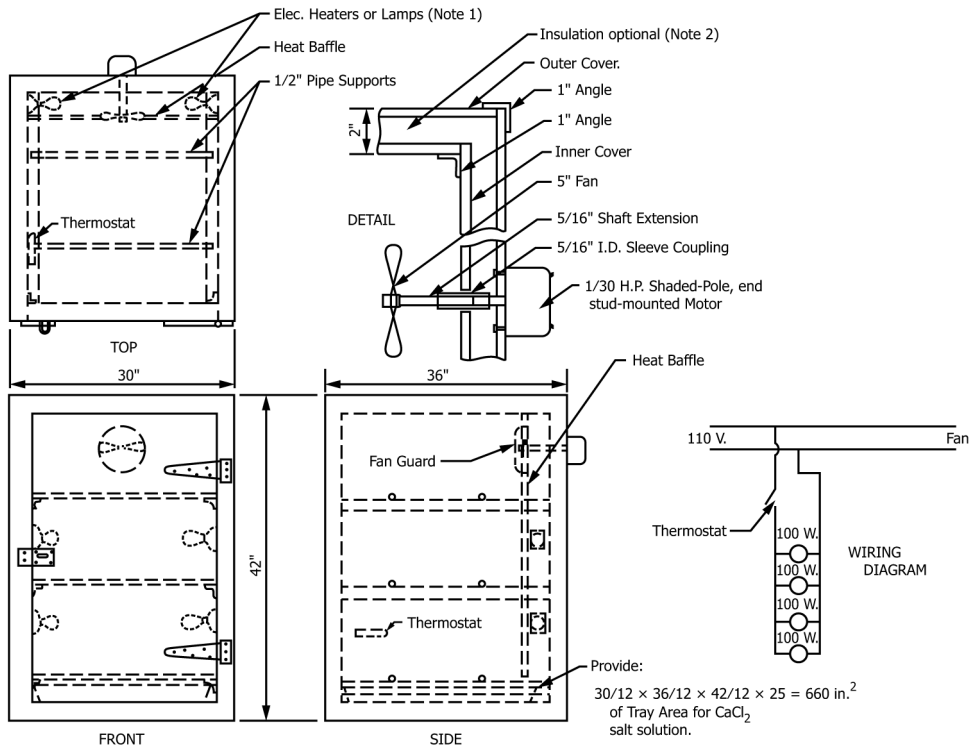
NOTE 2—Strain gauges may be obtained with various gauge lengths. The 10-in. (254-mm) gauge length is recommended for use with regular concrete masonry units, however, particular sizes of products may require other lengths. The length of the shrinkage specimen shall not be less than required for a minimum gauge length (distance between gauge plugs) of 6 in. (152.4 mm).

5.1.1 A means of positive contact with the specimen that will ensure reproducible measurements of length.

5.1.2 Means for precise measurement, consisting of a dial micrometer or other measuring device graduated to read in 0.0001-in. (0.0025-mm) units, and accurate within 0.0001 in. (0.0025 mm) in any 0.0010-in. (0.025-mm) range, and within 0.0002 in. (0.0050-mm) in any 0.0100-in. (0.254-mm) range.

³ Available from American National Standards Institute (ANSI), 25 W. 43rd St., 4th Floor, New York, NY 10036, http://www.ansi.org.

*A Summary of Changes section appears at the end of this standard



NOTE 1—Provide access to heaters.
 NOTE 2—Insulating fill is recommended in cabinets having outer covers of sheet metal
 NOTE 3—The following materials are required:

Quantity	Description
1	5-in. (127-mm) fan assembly, as shown
1	1/30-hp (25-W) shaded-pole, fan-cooled, stud-mounted electric motor
75 ft (22.9 m)	1-in. (25.4-mm) angle, steel or aluminum
60 ft ² (5.6 m ²)	Outer cover, 1/2-in. (12.7-mm) plywood or equivalent, faced with sheet metal or other material to provide a positive vapor barrier
60 ft ² (5.6 m ²)	Inner cover, 3/8-in. (9.5-mm) asbestos board or equivalent
1	Heat baffle, 25 by 34-in. (635 by 864-mm), sheet metal
16 ft (4.8 m)	1/2-in. iron pipe
4	100-W porcelain light fixtures
1	500-W thermostat
1	24 x 30 x 1 1/2-in. (610 x 762 x 38-mm) tray, borosilicate glass or equivalent
1 pr	8-in. (203-mm) hinges and hasp

FIG. 1 Drying Oven Suitable for Determining Drying Shrinkage of Concrete Block

5.1.3 Sufficient range to allow for small variations in the gauge lengths.

NOTE 3—If the shrinkage reference points are set carefully to position, a dial micrometer with a travel of 0.2 or 0.3 in. (5.1 or 7.6 mm) provides ample range in the instrument.

5.1.4 Means for checking the strain gauge at regular intervals against a standard reference bar. The standard reference bar shall be protected from air currents by placing it inside a wooden box which should be closed except when the strain gauge is being checked against it.

NOTE 4—A standard reference bar shall be furnished by the manufacturer of the instrument. A standard bar of ordinary steel is satisfactory, but corrections must be made for variations in its length due to temperature changes. When a more nearly constant datum is desired, Invar is preferable because of its low coefficient of thermal expansion.

5.1.5 Convenient and rapid measurement of specimens.

5.2 *Comparator*—When desirable to measure specimens end to end, a comparator conforming to the requirements of

Practice C490/C490M may be used as an alternative to the strain gauge for measuring linear drying shrinkage.

5.3 *Gauge Plugs*—The gauge plugs shall be made from metal that is resistant to corrosion. Plugs for use with strain gauges shall be 3/8 to 1/2 in. (9.5 to 12.7 mm) in diameter and 1/2 ± 1/8 (12.7 ± 3.2 mm) in thickness. Plugs for use with the comparator shall consist of 1/4-in. (6.4-mm) diameter stainless steel gauge studs shown in Practice C490/C490M.

5.4 *Drying Oven*—The oven shall be reasonably airtight and provide the features described in 5.4.1 through 5.4.4.

NOTE 5—One suggested oven construction is shown in Fig. 1.

5.4.1 A minimum storage capacity of three whole test specimens and a clearance of 1 in. (25.4 mm) on all sides of each test specimen.

5.4.2 A constant, uniform temperature of 122 ± 2°F (50 ± 0.9°C) throughout the insulated cabinet attained by means of an electrical heat source (Note 6).

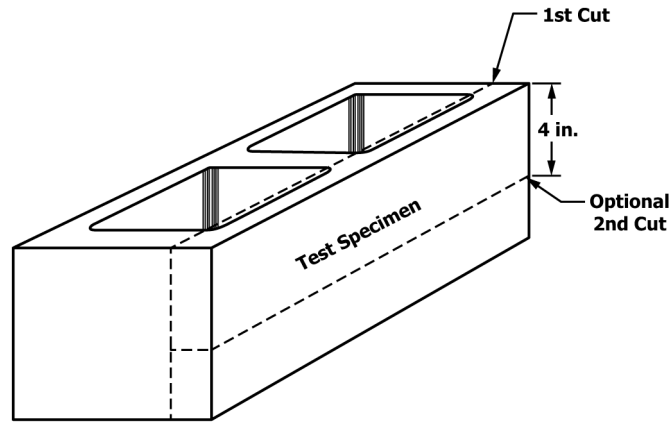


FIG. 2 View of Sawed Block Showing a Suggested Sequence of Cuts and Location of Half-Face Shell Specimens

NOTE 6—Direct heating of test specimens with the combustion products of gas or other carbonaceous fuels is not satisfactory due to the presence of carbon dioxide and water and their possible effect on the drying characteristics of portland cement products.

5.4.3 A means of drying specimens to a condition of equilibrium with a relative humidity of $17 \pm 2\%$ (Note 7).

5.4.3.1 Calcium chloride (CaCl_2), if used for this purpose, shall be in flake form. Suitable dishes or trays shall be provided to give an exposed solution area of not less than 25 in.^2 for each cubic foot (5800 cm^2 for each m^3) of oven volume. Dishes or trays shall contain sufficient solid calcium chloride so that the crystals will be exposed above the surface of the solution throughout the test. The calcium chloride solution shall be thoroughly stirred every 24 h, and more often if necessary, to prevent the formation of lumps and crusting over.

NOTE 7—The air immediately above a saturated solution of calcium chloride (CaCl_2) at 122°F (50°C) is approximately 17%.

5.4.4 Moderate circulation of air within the oven, over and around all test specimens and the drying agent.

5.5 *Cooling Chamber*—An airtight enclosure of sufficient capacity for cooling a minimum of three whole specimens to a temperature of $73.4 \pm 2^\circ\text{F}$ ($23 \pm 1.1^\circ\text{C}$).

5.6 *Immersion Tank*—A suitable container for completely immersing three whole test specimens in water maintained at $73.4 \pm 2^\circ\text{F}$ ($23 \pm 1.1^\circ\text{C}$).

5.7 *Balance or Scale*—The balance shall be sensitive to within 0.1% of the weight of the smallest specimen tested.

6. Test Specimens

6.1 General:

6.1.1 Specimens shall comply with the requirements of 6.1.2 through 6.1.5 and the applicable requirements for the type of specimen in 6.2 or 6.3.

6.1.2 A minimum of three specimens shall be tested.

6.1.3 Test specimens shall be representative of the lot from which they are selected. Specimens shall be free of visible cracks or other structural defects, and shall not be exposed to external heat sources.

6.1.4 Specimens shall have a minimum height of 3 in. (76.2 mm), and a minimum thickness of at least 0.75 in. (19 mm). The length of specimens shall conform to 6.1.4.1 or 6.1.4.2.

6.1.4.1 For full size units with a length of at least 12 in. (304.8 mm), use a test specimen with a minimum length of 12 in. (304.8 mm) and a gauge length of 10 in. (254 mm).

6.1.4.2 For full size units with a length of less than 12 in. (304.8 mm), do one of the following: (1) use a test specimen with a minimum length of 7.5 in. (190.5 mm) and a gauge length of 6 in. (152.4 mm), or (2) butt two test specimens of approximately the same thickness together and join with an epoxy resin cement to form a thin joint between units, and use a gauge length of 10 in. (254 mm). (See Note 8.)

NOTE 8—In tests of short units such as concrete brick by this method, use of a 10-in. (254-mm) Whittemore strain gauge is reported to be feasible when two units are butted together and joined using an epoxy resin cement to form a thin joint between the units. The abutting ends of the units should be ground to ensure intimate contact and a thin joint; these precautions are necessary to ensure the thinnest joints practicable and thereby avoid abnormal shrinkage indications. Some laboratories have obtained satisfactory results using a 10-in. Whittemore strain gauge on specimens joined with unfilled epoxy cements.

6.1.5 When specimens are saw-cut from larger units, sawing shall be performed in an accurate, competent manner, subjecting the specimen to as little saw vibration as possible. Use a diamond saw blade of proper hardness. Following cutting, residue from the cutting operation shall be removed prior to continuing testing (see Note 9).

NOTE 9—For specimens cut with a wet saw, rinsing with clean water is typically sufficient for removing cutting residue. For specimens cut with a dry saw, brushing with a soft-bristle brush is typically sufficient for removing cutting residue.

6.2 Concrete Masonry Units:

6.2.1 Specimens shall be full-size units or portions of face shells saw-cut from full size units.

6.2.2 When specimens are portions of face shells, one specimen shall be removed from each of three full-size units.

6.3 Other Related Units:

6.3.1 For test specimens of units other than concrete masonry units, specimens shall be whole units, specimens saw-cut from larger units, or specimens molded specifically for testing.

6.3.2 For specimens molded specifically for testing, the procedures used for molding and curing specimens shall be representative and consistent with the procedure used to produce the actual units represented by the specimens.

6.4 *Methods of Attaching Gauge Plugs to Specimens*—Attach gauge plugs to specimens using one of the following procedures.

6.4.1 *Gauge Plug Inserted into Specimen for Strain Gauge*—Place a pair of gauge plugs at or near, and parallel to, the center line in each of two opposite faces of the specimen. Drill plug holes with a drill that is slightly smaller in size than the plug diameter so as to provide a snug fit (Note 10). The depth of the holes shall be such that the exposed surface of the inserted gauge plug is approximately $\frac{1}{8}$ in. (2.5 mm) below the surface of the specimen. Prior to setting of the plug, plug holes shall be dry and dust free. After the bonding agent (Note 11) has been placed in the hole, insert the gauge plug and prick punch the plug to proper gauge length with the gauge bar provided. Wipe off excessive bonding agent and allow the remainder to cure in accordance with the bonding agent manufacturer's instructions. After the bonding agent is cured, drill receiving holes for strain gauge points with a No. 56 to 60 twist drill.⁴

NOTE 10—A $\frac{5}{16}$ -in. (7.9-mm) diameter carbide-tipped masonry drill has been found satisfactory for gauge plugs $\frac{3}{8}$ in. (9.5 mm) in diameter.

NOTE 11—A number of bonding agents have been reported satisfactory for setting gauge plugs. Tests to determine the effect of water immersion and subsequent drying on the bonding agent's adhesion should be made prior to use. Satisfactory results have been reported with the use of aluminum putty for both drilled gauge plugs as well as surface-mounted plugs.

6.4.2 *Gauge Plugs Surface Mounted to Specimen for Strain Gauge*—Drill receiving holes in gauge plugs for strain gauge points prior to attachment of gauge plugs. Place a pair of gauge plugs at or near, and parallel to, the center line of each of two opposite faces of the specimen. Attach gauge plugs with a bonding agent (Note 11) using the strain gauge punch bar or other convenient template to set gauge holes the proper distance apart. Allow the bonding agent to cure in accordance with the bonding agent manufacturer's instructions. Gauge plugs shall be approximately level with each other with respect to the surface of the specimen.

6.5 *Gauge Plugs for Comparator Measurements*—On opposite ends of the test specimen, mount spherically shaped gauge plugs, for use with the comparator (see 5.2). Drill a shallow recess (Note 12) at the desired location using a drill slightly less in size than the plug diameter. Fill the recess with a bonding agent, and firmly press the plug into position, taking care that the bonding agent extends slightly above the level of the center of the sphere. Allow the bonding agent to cure in accordance with the bonding agent manufacturer's instructions. After the bonding agent is cured, clean excess material from the exposed portion of the gauge plug.

NOTE 12—Satisfactory results without a drilled recess have been reported with the use of quick-setting bonding agents. Aluminum putty has been demonstrated to perform well in this test as an adhesive to adhere gauge plugs to the surface of test specimens.

7. Procedure

7.1 Immerse specimens in water at $73.4 \pm 2^\circ\text{F}$ ($23 \pm 1.1^\circ\text{C}$) for 48 ± 2 hours.

⁴ Detailed requirements for these twist drills are given in the American National Standard for Twist Drills (ANSI B5.10).

7.2 Take the initial reading of specimen length, at saturation, with the unit positioned in the water tank so that its gauge line is about at the level of the water surface to avoid error due to cooling by evaporation. Take accompanying length readings of the standard reference bar. (See 8.1 and 8.2 for methods of adjusting and correcting length readings.) Record the temperature of the water as T_x .

7.3 Weigh and record the saturated surface-dry weight of the test specimen by draining the test specimen for $1 \text{ min} \pm 5 \text{ s}$ over a $\frac{3}{8}$ -in. (9.5-mm) (or larger) mesh and removing visible surface water by blotting with a damp cloth.

7.4 Within 48 h after the specimens have been removed from the water, place them in the drying oven described in 5.4. During this period of up to 48 h, the specimens shall be stored continuously in air at a temperature of $75 \pm 15^\circ\text{F}$ ($24 \pm 8^\circ\text{C}$) and a relative humidity of less than 80 % (Note 13). To ensure uniformity of drying, the individual specimens should be rotated to different positions in the drying oven each time readings are taken.

NOTE 13—Reports have indicated that moisture is exuded faster by some masonry units during the early part of the drying period than can be absorbed by the calcium chloride solution, causing condensation to form on the interior surfaces of the oven.

7.5 *Measurements While Drying*—Remove shrinkage specimens from the drying oven and cool to $73.4 \pm 2^\circ\text{F}$ ($23 \pm 1.1^\circ\text{C}$) within 8 h (Note 14). Following cooling, record the temperature of the cooling chamber of T_x , remove each specimen from the cooling container and immediately take specimen length readings. Take accompanying length readings of the standard reference bar. Weigh the specimens. The air temperature of the laboratory at the time length readings are made on the specimens shall be $73.4 \pm 5^\circ\text{F}$ ($23 \pm 2.8^\circ\text{C}$). Return test specimens to the drying oven for drying until the next required measurement.

NOTE 14—Use a cooling chamber consisting of a steel, drum-type container equipped with a ring-sealed, rubber-gasketed type cover. The drum cover should be equipped with a thermometer, the bulb of which is in the proximity of the uppermost test specimen. The drum must be stored in a temperature-controlled room in order that its final equilibrium temperature will be $73.4 \pm 2^\circ\text{F}$ ($23 \pm 1.1^\circ\text{C}$). Length measurements made at temperatures other than 73.4°F (23°C) shall be corrected as shown in 8.1.

7.6 *Timing of Measurements*—Take the first reading of the specimens after no fewer than 5 and no more than 12 days of drying, including any preliminary drying in air up to 48 hours. After each reading, return test specimens to the drying oven for additional periods of drying. The duration of the second, and subsequent, oven drying periods shall be 40 to 72 hours. Follow the procedure as specified in 7.5 for cooling, length readings and weight determination for each measurement. Continue periods of oven drying, followed by length readings and weight determinations until the specimens reach equilibrium as defined in 7.7.

NOTE 15—Earlier editions of this standard required that the first measurement after oven drying be taken after exactly 5 days. For many specimens, this is not sufficient time to approach equilibrium. The current requirements allow the initial reading to be taken after a drying period of longer than 5 and no more than 12 days. Earlier editions of this standard