



Designation: D5141 – 23

Standard Test Method for Determining Filtering Efficiency and Flow Rate of the Filtration Component of a Sediment Retention Device¹

This standard is issued under the fixed designation D5141; the number immediately following the designation indicates the year of original adoption or, in the case of revision, the year of last revision. A number in parentheses indicates the year of last reapproval. A superscript epsilon (ϵ) indicates an editorial change since the last revision or reapproval.

1. Scope

1.1 This test method is used to determine the filtering efficiency and the flow rate of the filtration component of a sediment retention device, such as a silt fence, silt barrier, or inlet protector.

1.1.1 The results are shown as a percentage for filtering efficiency and cubic metres per square metre per minute ($\text{m}^3/\text{m}^2/\text{min}$) or gallons per square foot per minute ($\text{gal}/\text{ft}^2/\text{min}$) for flow rate.

1.1.2 The filtering efficiency indicates the percent of sediment removed from sediment-laden water.

1.1.3 The flow rate is the average rate of passage of the sediment-laden water through the filtration component of a sediment retention device.

1.2 This test method requires several specialized pieces of equipment, such as an integrated water sampler and an analytical balance, or a vacuum filtration system. At the client's discretion, the test soil is either a site-specific soil or a soil that is representative of a target default gradation.

1.3 The values stated in SI units are the standard, while the inch-pound units are provided for information. The values expressed in each system may not be exact equivalents; therefore, each system must be used independently of the other, without combining values in any way.

1.4 *This standard does not purport to address all of the safety concerns, if any, associated with its use. It is the responsibility of the user of this standard to establish appropriate safety, health, and environmental practices and determine the applicability of regulatory limitations prior to use.*

1.5 *This international standard was developed in accordance with internationally recognized principles on standardization established in the Decision on Principles for the Development of International Standards, Guides and Recommendations issued by the World Trade Organization Technical Barriers to Trade (TBT) Committee.*

¹ This test method is under the jurisdiction of ASTM Committee D35 on Geosynthetics and is the direct responsibility of Subcommittee D35.03 on Permeability and Filtration.

Current edition approved Sept. 1, 2023. Published September 2023. Originally approved in 1991. Last previous edition approved in 2018 as D5141 – 11 (2018). DOI: 10.1520/D5141-23.

2. Referenced Documents

2.1 *ASTM Standards*:²

D123 Terminology Relating to Textiles

D653 Terminology Relating to Soil, Rock, and Contained Fluids

D4354 Practice for Sampling of Geosynthetics and Rolled Erosion Control Products (RECPs) for Testing

D4439 Terminology for Geosynthetics

D4759 Practice for Determining the Specification Conformance of Geosynthetics

2.2 *American Public Health Association (APHA) Standard*:³

208D Total Nonfiltrable Residue Dried at 103–105°C (Total Suspended Matter)

3. Terminology

3.1 *Definitions*:

3.1.1 *filter*—See Terminology D653.

3.1.2 *filtration component*—a geotextile or other material designed to act as a filter.

3.1.3 *geosynthetic, n*—a planar product manufactured from polymeric material used with foundation soil, rock, earth, or any other geotechnical engineering related material as an integral part of a man-made project, structure, or system. (See Practice D4759.)

3.1.4 *performance property, n*—a result obtained by conducting a performance test.

3.1.5 *performance test, n—in geosynthetics*, a laboratory procedure that simulates selected field conditions which can be used in design.

3.1.6 For definitions of other terms relating to geosynthetics, refer to Terminology D4439. For definitions of textile terms, refer to Terminology D123. For definitions of soil terms, refer to Terminology D653.

² For referenced ASTM standards, visit the ASTM website, www.astm.org, or contact ASTM Customer Service at service@astm.org. For *Annual Book of ASTM Standards* volume information, refer to the standard's Document Summary page on the ASTM website.

³ Available from American Public Health Association (APHA), 1015 Eighteenth St. NW, Washington, DC 20036.

3.2 Definitions of Terms Specific to This Standard:

3.2.1 *filtering efficiency, FE, n—in geosynthetics*, the percent of sediment removed from sediment-laden water by the filtration component of a sediment retention device over a specified period of time.

3.2.2 *flow rate, FR* [$L^3L^{-2}T^{-1}$], *n—in geosynthetics*, the volume of fluid per unit time, expressed as an average, which passes through a cross-sectional plane perpendicular to the fluid flow.

3.2.3 *flume, n*—an apparatus that carries a liquid to an outlet.

3.2.4 *sediment retention device (SRD), n—in geosynthetics*, a temporary composite structure used to induce the removal of suspended sediments from sediment-laden flowing water.

3.2.5 *silt fence, n—in geosynthetics*, a type of sediment retention device.

4. Summary of Test Method

4.1 A filtration component of a sediment retention device specimen is placed vertically across a flume or over a horizontal opening at the end of a flume while sediment-laden water is passed through the specimen.

4.1.1 The time that water flows through the filtration component of a sediment retention device and the amount of soil passed by the filtration component of a sediment retention device are measured. The amount of soil retained, filtering efficiency, and flow rate are calculated from these measured values.

4.2 Either a site-specific soil or a soil representative of a target default gradation, at the client's discretion, shall be used in this test method.

5. Significance and Use

5.1 This test method is used to determine the filtering efficiency and flow rate of the filtration component of a sediment retention device, such as a silt fence, a silt barrier, or a silt curtain, for specific soil tested.

5.2 This test method may be used for the design of the filtration component of a sediment retention device to meet requirements of regulatory agencies in filtering efficiency or flow rate for the specific soil tested.

5.2.1 The designer can use this test method to determine the spacing between sediment retention devices.

5.3 This test method is intended for performance evaluation, as the results will depend on the specific soil evaluated. Unless testing with the default soil is desired, it is recommended that the user or representative perform the test to pre-approve products, as sediment retention device manufacturers are not typically equipped to handle or test soil requirements.

5.4 This test method provides a means of evaluating the filtration component of sediment retention devices with different soils under various conditions that simulate the conditions that exist in a sediment retention device installation. This test method may be used to simulate several storm events on the same sediment retention device specimen. Therefore, the number of times this test is repeated per specimen is dependent upon the user and the site conditions.

6. Apparatus

6.1 *Flume*, constructed from marine-grade plywood, plexiglas, aluminum, or other material. The flume shall be watertight and constructed as shown in Fig. 1.

NOTE 1—Metal flumes shall be mounted on a wood frame. The flume opening is the standard length of a straw bale. With a standard length flume of 122 cm (48 in.), the height of the back of the flume would be elevated 10 cm (3 $\frac{7}{8}$ in.).

6.2 *Inlet Extension*, constructed from marine-grade plywood, plexiglass, aluminum, or other material. The inlet extension shall be watertight and constructed as shown in Fig. 2.

NOTE 2—Metal inlet extensions shall be mounted on a wood frame. The inlet extension opening shall be appropriate for the type of SRD being tested.

6.3 *Sample Cutter*, appropriate to prepare test specimens.

6.4 *Two Containers*, 75 L (20 gal), plastic or nonmetallic.

6.5 *Stopwatch*.

6.6 *Stirrer*, such as a stirring rod on a portable electric drill.

6.7 *Sediment-Free Water*, containing no flocculent agents.

NOTE 3—Flocculent agents used in water treatment may cause erroneous results by affecting the settling rate of soil particles in the water.

6.8 *Soil*, either site-specific or representative of a target default gradation.

6.9 *Gooch Crucible*.

6.10 *Membrane Filter Apparatus*.

6.11 *Vacuum Pump*.

6.12 *Planchet*, aluminum or stainless steel.

6.13 *Desiccator*.

6.14 *Analytical Balance*, sensitivity of 0.01 g.

7. Sampling

7.1 *SRD Filtration Component*:

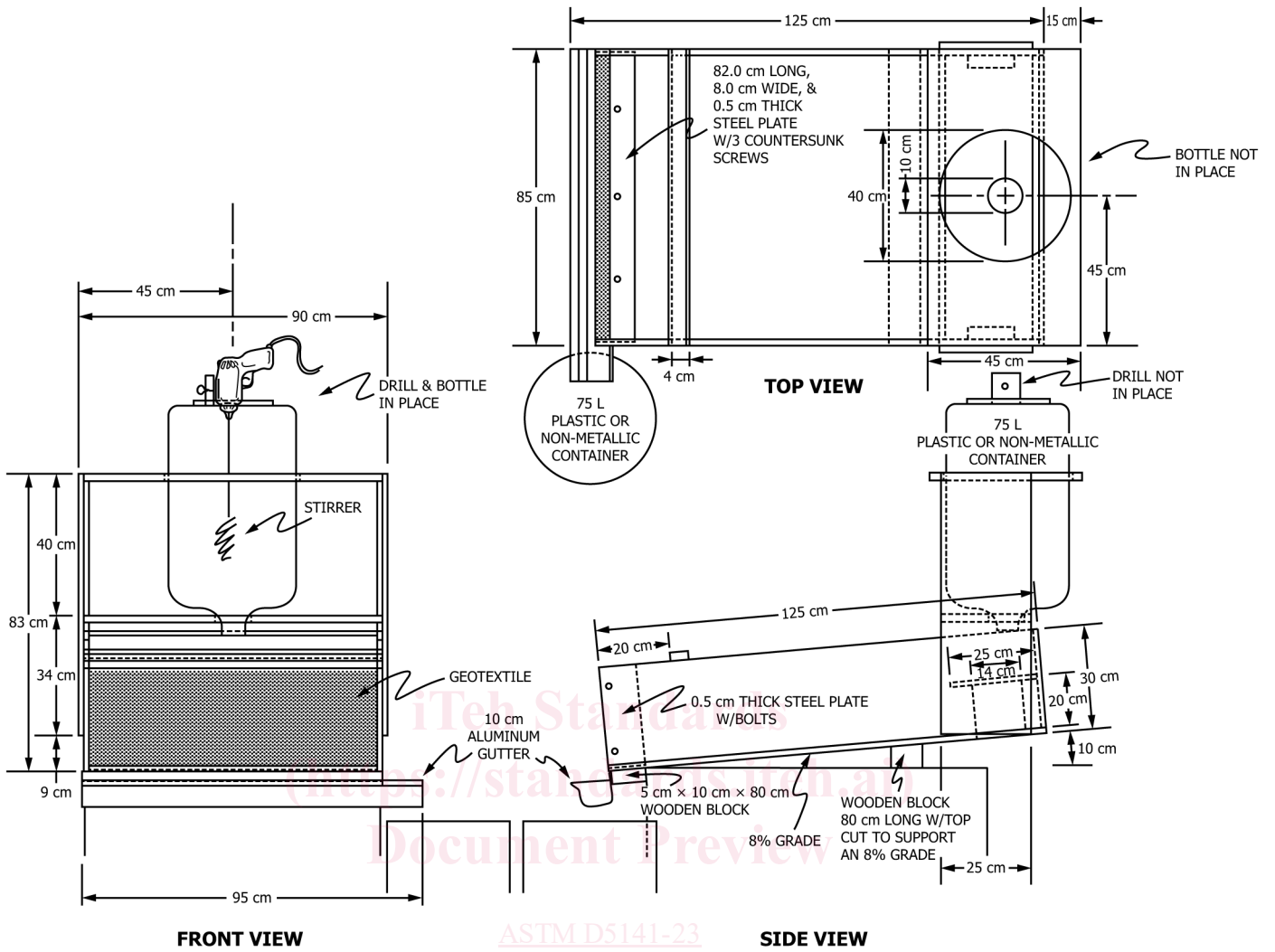
7.1.1 *Lot Sample*—Divide the product into lots and take the lot sample as directed in Practice D4354.

7.1.2 *Laboratory Sample*—Cut off sufficient length of the filtration component of the sediment retention device to get the appropriate number of test specimens. If holes or damaged areas are evident, then damaged material shall be discarded and additional material sampled.

7.1.3 *Test Specimens*—Cut the appropriate number of specimens to be tested from the machine direction of the laboratory sample by a random method. Each test specimen shall be cut (1 m long by 0.3 m wide (3.3 ft long by 12 in. wide)) to fit the flume or as necessary to fit the inlet opening.

NOTE 4—No specimen shall be taken within 0.2 m (6 in.) of a selvage.

7.2 *Soil*—If desired, obtain representative samples of the site-specific soil that is significant to the design of the sediment retention device on the construction project. The size and type of sample required is dependent upon the number of tests to be performed and the percent of coarse particles in the sample. If



NOTE 1—Sides and bottom of flume can be constructed of 2 cm thick marine-grade plywood.

FIG. 1 Flume (for Vertical SRDs)

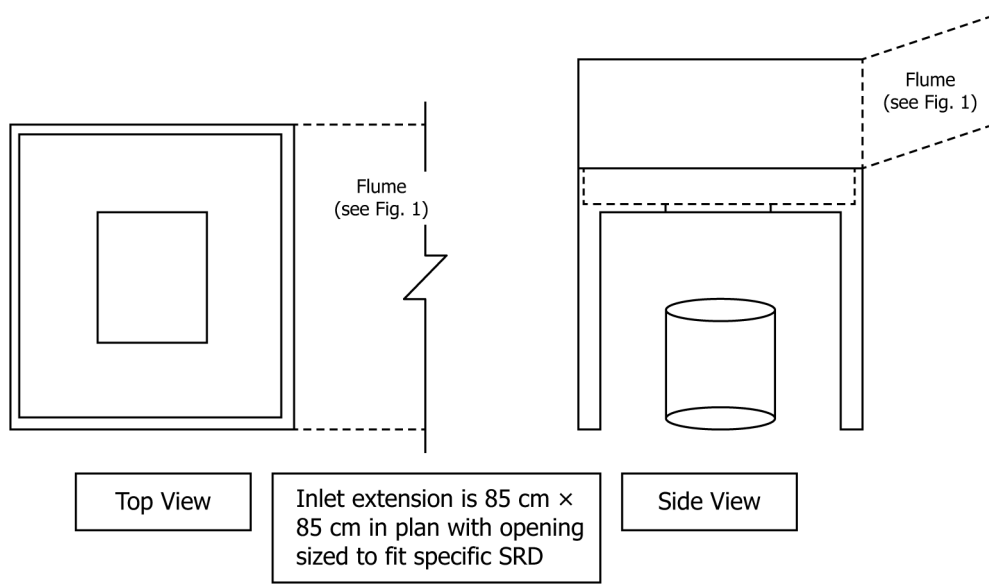


FIG. 2 Inlet Extension (for Horizontal SRDs)