



Designation: **F963—17 F963 – 23**

An American National Standard

## Standard Consumer Safety Specification for Toy Safety<sup>1</sup>

This standard is issued under the fixed designation F963; the number immediately following the designation indicates the year of original adoption or, in the case of revision, the year of last revision. A number in parentheses indicates the year of last reapproval. A superscript epsilon ( $\epsilon$ ) indicates an editorial change since the last revision or reapproval.

### INTRODUCTION

The purpose of this consumer safety specification is to establish nationally recognized safety requirements for toys. Although this specification will not eliminate the need for the exercise of parental responsibility in selecting toys appropriate to the age of a child, or parental supervision in situations in which children of various ages may have access to the same toys, its application will minimize accidents in the normal, intended use and reasonably foreseeable abuse of the toys covered by this specification. This specification was developed originally as a Voluntary Product Standard under the auspices of the National Bureau of Standards, Department of Commerce, and published in 1976 (PS 72–76). The present revision is intended to update the safety requirements to include the following by reference: published federal mandatory requirements, relevant voluntary standards, certain new requirements for addressing potential hazards, and several technical revisions based on producer experience with the original standard.

(<https://standards.iteh.ai>)  
Document Preview

### 1. Scope

1.1 This specification<sup>2</sup> relates to possible hazards that may not be recognized readily by the public and that may be encountered in the normal use for which a toy is intended or after reasonably foreseeable abuse. It does not purport to cover every conceivable hazard of a particular toy. This specification does not cover product performance or quality, except as related to safety. Except for the labeling requirements pointing out the functional hazards and age range for which the toy is intended, this specification has no requirements for those aspects of a toy that present an inherent and recognized hazard as part of the function of the toy. Such an example is a sharp point necessary for the function of a needle. The needle is an inherent hazard that is well understood by the purchaser of a toy sewing kit, and this hazard is communicated to the user as part of the normal educational process.

1.2 On the other hand, while a riding toy has inherent hazards associated with its use (for example, falling off onto the sidewalk), the possible hazards associated with its construction (sharp edges, exposed mechanisms, etc.) will be minimized by the application of this specification.

1.3 This specification covers requirements and contains test methods for toys intended for use by children under 14 years of age. Different age limits for various requirements will be found in this specification. These limits reflect the nature of the hazards and expected mental or physical ability, or both, of a child to cope with the hazards.

1.4 Articles not covered by this specification are as follows:

<sup>1</sup> This consumer safety specification is under the jurisdiction of ASTM Committee F15 on Consumer Products and is the direct responsibility of Subcommittee F15.22 on Toy Safety.

Current edition approved May 1, 2017; August 1, 2023. Published August 2017; October 2023. Originally approved in 1986. Last previous edition approved in 2016 as F963—16; F963—17. DOI: 10.1520/F0963-17; 10.1520/F0963-23.

<sup>2</sup> The Toy Association sometimes provides its interpretations of this specification through its counsel as a service to its members and others. The Toy Association's interpretations are not reviewed or approved by ASTM and should be viewed as The Toy Association's alone.

- Bicycles
- Tricycles
- Non-Powered Scooters
  - (see Consumer Safety Specification [F2264](#))
- Recreational Powered Scooters and Pocket Bikes
  - (see Consumer Safety Specification [F2641](#))
- Sling shots and sharp-pointed darts
- Playground equipment
- Non-powder guns
- Kites
- Hobby and craft items in which the finished item is not primarily of play value
- Model kits in which the finished item is not primarily of play value
- Crayons, paints, chalks, and other similar art materials in which the material itself or the finished item is not primarily of play value, except that all art materials, whether or not a component of a toy, shall comply with LHAMA, in accordance with [4.29.1 – 4.29.3](#).
- Sporting goods, camping goods, athletic equipment, musical instruments, juvenile products, and furniture; however, toys that are their counterparts are covered. (It is recognized that there is often a fine line between, for example, a musical instrument or a sporting item and its toy counterpart. The intention of the producer or distributor, as well as normal use and reasonably foreseeable abuse, determines whether the item is a toy counterpart.)
- Powered models of aircraft, rockets, boats, and land vehicles; however, toys that are their counterparts are covered.
- Constant air inflatables

1.5 General guidelines for age labeling toys and toy packaging are contained in [Annex A1](#).

1.6 Information regarding packaging and shipping is contained in [Annex A2](#).

1.7 This consumer safety specification includes the following sections:

Title	Section
Scope	1
Referenced Documents	2
Terminology	3
Safety Requirements	4
Material Quality	4.1
Flammability	4.2
Toxicology	4.3
Electrical/Thermal Energy	4.4
<del>  Sound-Producing Toys</del>	<del>4.5</del>
<u>Sound-producing Toys</u>	<u>4.5</u>
Small Objects	4.6
Accessible Edges	4.7
Projections	4.8
Accessible Points	4.9
Wires or Rods	4.10
Nails and Fasteners	4.11
Plastic Film	4.12
Folding Mechanisms and Hinges	4.13
Cords, Straps, and Elastics	4.14
<del>  Stability and Over-Load Requirements</del>	<del>4.15</del>
<u>Stability and Over-load Requirements</u>	<u>4.15</u>
Confined Spaces	4.16
Wheels, Tires, and Axles	4.17

Holes, Clearance, and Accessibility of Mechanisms	4.18
Simulated Protective Devices	4.19
Pacifiers	4.20
Projectile Toys	4.21
Teethers and Teething Toys	4.22
Rattles	4.23
Squeeze Toys	4.24
<del>Battery-Operated Toys</del>	<del>4.25</del>
<u>Battery-operated Toys</u>	<u>4.25</u>
Toys Intended to be Attached to a Crib or Playpen	4.26
<del>Stuffed and Beanbag-Type Toys</del>	<del>4.27</del>
<u>Stuffed and Beanbag-type Toys</u>	<u>4.27</u>
Stroller and Carriage Toys	4.28
Art Materials	4.29
Toy Gun Marking	4.30
Balloons	4.31
Certain Toys with Nearly Spherical Ends	4.32
Marbles	4.33
Balls	4.34
Pompoms	4.35
<del>Hemispheric-Shaped Objects</del>	<del>4.36</del>
<u>Hemispheric-shaped Objects</u>	<u>4.36</u>
Yo Yo Elastic Tether Toys	4.37
Magnets	4.38
Jaw Entrapment in Handles and Steering Wheels	4.39
Expanding Materials	4.40
Toy Chests	4.41
Labeling Requirements	5
Instructional Literature	6
Producer's Markings	7
Test Methods	8
General	8.1
Testing for Hazardous Substance Content	8.2
Test Methods for Determination of Heavy Element Content in Toys, Toy Components, and Materials	8.3
Tests for Cleanliness and Preservative Effectiveness	8.4
Normal Use Testing	8.5
Abuse Testing	8.6
Impact Tests	8.7
Torque Tests for Removal of Components	8.8
Tension Test for Removal of Components	8.9
Compression Test	8.10
Tests for Tire Removal and Snap-in Wheel and Axle Assembly Removal	8.11
Flexure Test	8.12
Test for Mouth-Actuated Toys and Mouth-Actuated Projectile Toys	<del>8.13</del>
<u>Test for Mouth-actuated Toys and Mouth-actuated Projectile   Toys</u>	<u>8.13</u>
Projectiles	8.14
<del>Test for Stability of Ride-On Toys or Toy Seats</del>	<del>8.15</del>
<u>Test for Stability of Ride-on Toys or Toy Seats</u>	<u>8.15</u>
Pompoms	8.16
<del>Stalled Motor Test for Battery-Operated Toys</del>	<del>8.17</del>
<u>Stalled Motor Test for Battery-operated Toys</u>	<u>8.17</u>
<del>Tests for Battery-Powered Ride-On Toys</del>	<del>8.18</del>
<u>Tests for Battery-Powered Ride-on Toys</u>	<u>8.18</u>
Test for Toys that Contain Secondary Cells or Batteries	8.19
<del>Tests for Toys which Produce Noise</del>	<del>8.20</del>
Tests for Toys which Produce Sound	8.20
<del>Dynamic Strength Test for Wheeled Ride-On Toys</del>	<del>8.21</del>
<u>Dynamic Strength Test for Wheeled Ride-on Toys</u>	<u>8.21</u>
Plastic Film Thickness	8.22
Test for Loops and Cords	8.23
Yo Yo Elastic Tether Toy Test Methods	8.24
Magnet Test Methods	8.25
Test Methods for Locking Mechanisms or Other Means	8.26
Tests for Toy Chest Lids and Closures	8.27
<del>Test for Overload of Ride-On Toys and Toy Seats</del>	<del>8.28</del>
<u>Test for Overload of Ride-on Toys and Toy Seats</u>	<u>8.28</u>
Stuffing Materials Evaluation	8.29
Expanding Materials – Test Method	8.30
Identification	9
Age Grading Guidelines	Annex A1
Packaging and Shipping	Annex A2
Design Guidelines for Toys Attached to Cribs	

or Playpens	
Design Guidelines for Bath Toy Projections	
Flammability Testing Procedure for Solids and Soft Toys	
Flammability Testing Procedure for Fabrics	
Compositing Procedure for Total Heavy Metal Analysis	
Design Guidelines for Battery Operated Toys	
Rationale for 2007 Revisions	
Rationale for 2008 Revisions	
Rationale for 2011 Revisions	
Rationale for 2016 Revisions	
Rationale for 2017 Revisions	
Rationale for 2023 Revisions	

<a href="#">Annex A3</a>
<a href="#">Annex A4</a>
<a href="#">Annex A5</a>
<a href="#">Annex A6</a>
<a href="#">Annex A7</a>
<a href="#">Annex A8</a>
<a href="#">Annex A9</a>
<a href="#">Annex A10</a>
<a href="#">Annex A11</a>
<a href="#">Annex A12</a>
<a href="#">Annex A13</a>
<a href="#">Annex A14</a>

1.8 The values stated first are to be regarded as the standard. The values given in parentheses are for information only.

1.9 The following precautionary statement pertains only to the test methods portion, Section 8, of this specification: *This standard does not purport to address all of the safety concerns, if any, associated with its use. It is the responsibility of the user of this standard to establish appropriate safety and health safety, health, and environmental practices and determine the applicability of regulatory limitations prior to use.*

1.10 *This international standard was developed in accordance with internationally recognized principles on standardization established in the Decision on Principles for the Development of International Standards, Guides and Recommendations issued by the World Trade Organization Technical Barriers to Trade (TBT) Committee.*

## 2. Referenced Documents

### 2.1 ASTM Standards:<sup>3</sup>

- D374/D374M Test Methods for Thickness of Solid Electrical Insulation
- D642 Test Method for Determining Compressive Resistance of Shipping Containers, Components, and Unit Loads
- D880 Test Method for Impact Testing for Shipping Containers and Systems
- D999 Test Methods for Vibration Testing of Shipping Containers
- D1193 Specification for Reagent Water
- D2240 Test Method for Rubber Property—Durometer Hardness
- ~~D3421 Recommended Practice for Extraction and Determination of Plasticizer Mixtures from Vinyl Chloride Plastics (Withdrawn 1986)<sup>4</sup>~~
- D4236 Practice for Labeling Art Materials for Chronic Health Hazards
- D5276 Test Method for Drop Test of Loaded Containers by Free Fall
- F404 Consumer Safety Specification for High Chairs
- F406 Consumer Safety Specification for Non-Full-Size Baby Cribs/Play Yards
- F1066 Specification for Vinyl Composition Floor Tile
- F1313 Specification for Volatile *N*-Nitrosamine Levels in Rubber Nipples on Pacifiers (Withdrawn 2020)<sup>4</sup>
- F1148 Consumer Safety Performance Specification for Home Playground Equipment
- F2264 Consumer Safety Specification for Non-Powered Scooters
- F2641 Consumer Safety Specification for Recreational Powered Scooters and Pocket Bikes
- F2853 Test Method for Determination of Lead in Paint Layers and Similar Coatings or in Substrates and Homogenous Materials by Energy Dispersive X-Ray Fluorescence Spectrometry Using Multiple Monochromatic Excitation Beams
- F2923 Specification for Consumer Product Safety for Children’s Jewelry

### 2.2 ANSI Standards:<sup>5</sup>

- ANSI C18.1 M, Part 1 American National Standard for Portable Primary Cells and Batteries with Aqueous Electrolyte – General and Specifications
- ANSI C18.1 M, Part 2 American National Standard for Portable Primary Cells and Batteries with Aqueous Electrolyte – Safety Standard
- ANSI C18.2 M, Part 1 American National Standard for Portable Rechargeable Cells and Batteries – General and Specifications
- ANSI C18.2 M, Part 2 American National Standard for Portable Rechargeable Cells and Batteries – Safety Standard
- ANSI C18.3 M, Part 1 American National Standard for Portable Lithium Primary Cells and Batteries – General and Specifications
- ANSI C18.3 M, Part 2 American National Standard for Portable Lithium Primary Cells and Batteries – Safety Standard

<sup>3</sup> For referenced ASTM standards, visit the ASTM website, [www.astm.org](http://www.astm.org), or contact ASTM Customer Service at [service@astm.org](mailto:service@astm.org). For *Annual Book of ASTM Standards* volume information, refer to the standard’s Document Summary page on the ASTM website.

<sup>4</sup> The last approved version of this historical standard is referenced on [www.astm.org](http://www.astm.org).

<sup>5</sup> Electronic copy available from American National Standards Institute website: [www.ansi.org](http://www.ansi.org); hard copies from Global Engineering Documents, 15 Inverness Way East, Englewood, CO 80112.

ANSI/UL 1012 Power Units Other Than Class 2

ANSI/UL 60950–1 Information Technology Equipment – Safety – Part 1: General Requirements

ANSI/UL 2595 General Requirements for Battery-Powered Appliances

S1.4 Specification for Sound Level Meters

Z315.1 Safety Requirements for Tricycles

2.3 *European Union Standards:*<sup>6</sup>

EN 71-1 Safety of toys – Part 1: Mechanical and physical properties

EN 71-3 Safety of toys – Part 3: Migration of certain elements

2.4 *Federal Standards:*<sup>7</sup>

15 CFR 272 Marking of Toys, Toy, Look-Alike and Imitation Firearms

16 CFR 1199.1 Children’s toys and child care articles: Phthalate-containing inaccessible component parts

16 CFR 1251 Toys: Determinations Regarding Heavy Elements Limits for Certain Materials

16 CFR 1252 Children’s Products, Children’s Toys, and Child Care Articles: Determinations Regarding Lead, ASTM F963 Elements, and Phthalates for Engineered Wood Products

16 CFR 1253 Children’s Toys and Child Care Articles: Determinations Regarding the ASTM F963 Elements and Phthalates for Unfinished Manufactured Fibers

16 CFR 1303 Ban of Lead-Containing Paint and Certain Consumer Products Bearing Lead Containing Paint

16 CFR 1307 Prohibition of Children’s Toys and Child Care Articles Containing Specified Phthalates

16 CFR 1308 Prohibition of Children’s Toys and Child Care Articles Containing Specified Phthalates: Determinations Regarding Certain Plastics

16 CFR 1500 Hazardous Substances Act Regulations, including the following sections:

16 CFR 1500.3 (c) (6) (vi) Definition of “flammable solid”

16 CFR 1500.14 Products requiring special labeling under section 3(b) of the act

16 CFR 1500.18 Banned toys and other banned articles intended for use by children

16 CFR 1500.19 Misbranded toys and other articles intended for use by children

16 CFR 1500.44 Method for determining extremely flammable and flammable solids

16 CFR 1500.48 Technical requirements for determining a sharp point in toys and other articles intended for use by children under 8 years of age

16 CFR 1500.49 Technical requirements for determining a sharp metal or glass edge in toys and other articles intended for use by children under 8 years of age

16 CFR 1500.50-53 Test method for simulating use and abuse of toys and other articles intended for use by children

16 CFR 1500.83 Exemptions for small packages, minor hazards, and special circumstances

16 CFR 1500.85 Exemptions from classification as banned hazardous substances

16 CFR 1500.86 Exemptions from classification as a banned toy or other banned article for use by children

16 CFR 1500.87 Children’s products containing lead: inaccessible component parts

16 CFR 1500.88 Exemptions from lead limits under section 101 of the Consumer Product Safety Improvement Act for certain electronic devices

16 CFR 1500.91 Determinations regarding lead content for certain materials or products under section 101 of the Consumer Product Safety Improvement Act

16 CFR 1501 Method for Identifying Toys and Other Articles Intended for Use by Children Under 3 Years of Age which Present Choking, Aspiration, or Ingestion Hazards Because of Small Parts

16 CFR 1505 Requirements for Electrically Operated Toys or Other Electrically Operated Articles Intended for Use by Children

16 CFR 1510 Requirements for Rattles

16 CFR 1511 Requirements for Pacifiers

16 CFR 1610 Standard for Flammability of Clothing Textiles

21 CFR 110 Current Good Manufacturing Practice in Manufacturing, Processing, Packaging, or Holding Human Food

21 CFR 170-189 Food for Human Consumption

21 CFR 700-740 Requirements for Specific Cosmetic Products

21 CFR 73, 74, 81, 82 Color Additives

29 CFR 1910 Occupational Safety and Health Standards

40 CFR 141.63 Maximum Contaminant Levels (MCLs) for Microbiological Contaminants

49 CFR 173.100, 109 Definition of Class C Explosives

CPSC-CH-C1001-09.4 Standard Operating Procedure for Determination of Phthalates<sup>8</sup>

<sup>6</sup> Available from European Committee for Standardization (CEN), Avenue Marnix 17, B-1000, Brussels, Belgium, <http://www.cen.eu>.

<sup>7</sup> Available from U.S. Consumer Product Safety Commission website:

[www.cpsc.gov](http://www.cpsc.gov) or U.S. Government Printing Office, Superintendent of Documents; P.O. Box 371954, Pittsburgh, PA 15250-7954; website: [www.gpo.gov](http://www.gpo.gov)

<sup>8</sup> Available from U.S. Consumer Product Safety Commission (CPSC), 4330 East West Hwy., Bethesda, MD 20814, <http://www.cpsc.gov>.

CPSC-CH-E1001-08.3 Standard Operating Procedure for Determining Total Lead (Pb) in Metal Children’s Products (including Children’s Metal Jewelry)<sup>8</sup>

CPSC-CH-E1002-08.3 Standard Operating Procedure for Determining Total Lead (Pb) in Non-Metal Children’s Products<sup>8</sup>

CPSC-CH-E1003-09.1 Standard Operating Procedure for Determining Lead (Pb) in Paint and Other Similar Surface Coatings<sup>8</sup>

CPSC-CH-E1004-11 Standard Operating Procedure for Determining Cadmium (Cd) Extractability from Children’s Metal Jewelry<sup>8</sup>

MIL-D-17951 Military Specification: Deck Covering, Lightweight, Nonslip, Abrasive Particle Coated Fabric, Film, or Composite and Sealing Compound

~~SS-T-312B Tile, Floor: Asphalt, Rubber, Vinyl, VinylAsbestos<sup>9</sup>~~

Voluntary Product Standard PS 72-76 Toy Safety<sup>9</sup>

### 2.5 ISO and IEC Standards:<sup>10</sup>

ISO 3696 Water for analytical laboratory use—~~Specification~~ use – Specification and test methods

ISO 3746:1995 ~~Acoustics—Determination~~Acoustics – Determination of Sound Power Levels of Noise Sources Using Sound Pressure—~~Survey~~Pressure – Survey Method Using an Enveloping Measurement Surface Over a Reflecting Plane

ISO 7779 ~~Acoustics—Measurement~~Acoustics – Measurement of Airborne Noise Emitted by Computer and Business Equipment

ISO 8124-1 Safety of toys – Part 1: Safety aspects related to mechanical and physical properties

ISO 8124-3 Safety of toys – Part 3: Migration of certain elements

ISO 11201 ~~Acoustics—Noise~~Acoustics – Noise Emitted by Machinery and ~~Equipment—Determination~~Equipment – Determination of Emission Sound Pressure Levels at a Work Station and at Other Specified Positions in an Essentially Free Field Over a Reflecting Plane with Negligible Environmental Corrections

ISO 11202 ~~Acoustics—Noise~~Acoustics – Noise Emitted by Machinery and ~~Equipment—Measurement~~Equipment – Measurement of Emission Sound Pressure Levels at a Work Station and at Other Specified Positions—~~Survey~~Positions – Survey Method in situ

ISO 11204 ~~Acoustics—Noise~~Acoustics – Noise Emitted by Machinery and ~~Equipment—Measurement~~Equipment – Measurement of Emission Sound Pressure Levels at a Work Station and at Other Specified Positions—~~Method~~Positions – Method Requiring Environmental Corrections

IEC 60086–2 Primary Batteries: Physical and Electrical Specifications

IEC 60384–14 Fixed Capacitors for Use in Electronic ~~Equipment—Part~~Equipment – Part 14: Sectional ~~Specification—Fixed~~Specification – Fixed Capacitors for Electromagnetic Interference Suppression and Connection to the Supply Mains

IEC 60738–1 ~~Thermistors—Directly~~Thermistors – Directly Heated Positive Temperature ~~Coefficient—Part~~Coefficient – Part 1: Generic Specification

IEC 60950–1 Information Technology ~~Equipment—Safety—Part~~Equipment – Safety – Part 1: General Requirements

IEC 61672–1 ~~Electroacoustics—Sound Level Meters—Part~~Electroacoustics – Sound Level Meters – Part 1: Specifications

IEC 61672–2 ~~Electroacoustics—Sound Level Meters—Part~~Electroacoustics – Sound Level Meters – Part 2: Pattern Evaluation Tests

IEC 62133 Secondary Cells and Batteries Containing Alkaline or Other Non-acid ~~Electrolytes—Safety~~Electrolytes – Safety Requirements for Portable Sealed Secondary Cells and for Batteries Made From Them, For Use in Portable Applications

### 2.6 UL Standards:<sup>11</sup>

UL-94 Standard for Safety of Flammability of Plastic Materials for Parts in Devices and Appliances Testing

UL 1642 Standard for Lithium Batteries

UL 2054 Standard for Household and Commercial Batteries

UL 62133 Secondary Cells and Batteries Containing Alkaline or Other Non-acid ~~Electrolytes—Safety~~Electrolytes – Safety Requirements for Portable Sealed Secondary Cells and for Batteries Made From Them, For Use in Portable Applications

ANSI/UL 1012 Power Units Other Than Class 2

ANSI/UL 2595 General Requirements for Battery-Powered Appliances

ANSI/UL 60950–1 Information Technology ~~Equipment—Safety—Part~~Equipment – Safety – Part 1: General Requirements

### 2.7 Canadian Standards:<sup>12</sup>

CAN/CSA E62133 Secondary Cells and Batteries Containing Alkaline or Other Non-acid ~~Electrolytes—Safety~~Electrolytes – Safety Requirements for Portable Sealed Secondary Cells and for Batteries Made From Them, For Use in Portable Applications

<sup>9</sup> Available from U.S. Government Printing Office Superintendent of Documents, 732 N. Capitol St., NW, Mail Stop: SDE, Washington, DC 20401, <http://www.access.gpo.gov>.

<sup>10</sup> Available from International Organization for Standardization (ISO), 1 rue de Varembe, Case postale 56, CH-1211, Geneva 20, Switzerland, <http://www.iso.ch>.

<sup>11</sup> Available from Underwriters Laboratories (UL), 2600 N.W. Lake Rd., Camas, WA 98607-8542, <http://www.ul.com>.

<sup>12</sup> Available from Canadian General Standards Board (CGSB), 11 Laurier St., Phase III, Place du Portage, Gatineau, Quebec K1A 0S5, Canada, <http://www.tpsgc-pwgsc.gc.ca/ongc-egsb>.

2.8 Other Documents:

- CTFA Microbiological Guidelines, Methods M-1 Determination of the Microbial Content of Personal Care Products<sup>13</sup>
- CTFA Microbiological Guidelines, Methods M-2 Examination for and Identification of *Staphylococcus aureus*, *Escherichia coli*, *Pseudomonas aeruginosa*, and *Candida albicans*<sup>13</sup>
- CTFA Microbiological Guidelines, Methods M-3 A Method for Preservation Testing of Water Miscible Personal Care Products
- CTFA Microbiological Guidelines, Methods M-6 A Method for Preservation Testing of Atypical Personal Care Products
- U.S. Food and Drug Administration Bacteriological Analytical Manual<sup>14</sup>
- United States Pharmacopeia, Volume 35 (or most current), Method 61 Microbiological Examination of Nonsterile Products: Microbial Enumeration Tests<sup>15</sup>
- United States Pharmacopeia, Volume 35 (or most current), Method 62 Microbiological Examination of Nonsterile Products: Tests for Specified Microorganisms<sup>15</sup>
- United States Pharmacopeia, Volume 35 (or most current), Chapter 1231 Water for Pharmaceutical Purposes<sup>15</sup>

3. Terminology

3.1 Definitions of Terms Specific to This Standard:

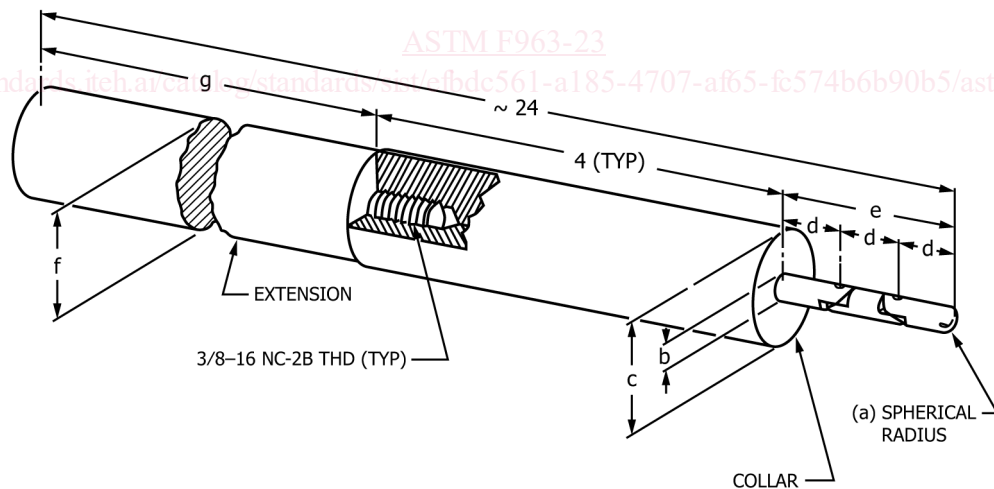
3.1.1 *A-weighted equivalent sound pressure level,  $L_{Aeq}$* —the level of a steady-state sound which, in a stated time period and at a stated location, has the same A-weighted sound energy as the time-varying sound.

3.1.2 *accessible*—(part or component) describing any area of the toy that can be contacted by any portion forward of the collar of the accessibility probe as described in 16 CFR 1500.48 and 16 CFR 1500.49. (See Fig. 1.)

NOTE 1—Dimensions are provided in Fig. 1 for two probes corresponding to two age ranges of children.

3.1.3 *alkaline battery*—a non-rechargeable dry cell battery with an alkaline manganese electrochemistry.

3.1.4 *aquatic toy*—an article, whether inflatable or not, intended to bear the mass of a child and used as an instrument of play in shallow water. This does not include bath toys, beach balls, and United States Coast Guard-approved life saving devices.



	a	b	c	d	e	f	g
(CHILDREN 0-36 MONTHS INCL)	PROBE A .110	.220	1.020	.577	1.731	1	18 9/32
( " 37-96 " " )	PROBE B .170	.340	1.510	.760	2.280	1 1/2	17 25/32

ALL DIMENSIONS IN INCHES

FIG. 1 Accessibility Probes

<sup>13</sup> Available from Personal Care Products Council (PCPC), 1620 L St., NW, Suite 1200, Washington, DC 20036, www.personalcarecouncil.org.  
<sup>14</sup> Available from U.S. Food and Drug Administration (FDA), 10903 New Hampshire Ave., Silver Spring, MD 20993, https://www.fda.gov/food/foodscienceresearch/laboratorymethods/ucm2006949.htm#intro.  
<sup>15</sup> Available from U.S. Pharmacopeial Convention (USP), 12601 Twinbrook Pkwy., Rockville, MD 20852-1790, http://www.usp.org.

3.1.5 *arrow*—projectile in the form of a shaft with a length of 150 mm or more that is intended to be discharged from a bow held by a child.

3.1.6 *art material*—any substance marketed or represented by the producer or repackager as suitable for use in any phase of the creation of any work of visual or graphic art of any medium. This definition includes items that become a component of the work of art such as paint, canvas, inks, crayons, chalk, solder, brazing rods, flux, paper, clay, stone, thread, cloth, and photographic film. It also includes items that are associated closely with the creation of the final work of art such as brushes, brush cleaners, solvents, ceramic kilns, silk screens, molds, mold making material, and photographic developing chemicals.

3.1.7 *ball*—any spherical, ovoid, or ellipsoidal object that is designed or intended to be thrown, hit, kicked, rolled, dropped, or bounced. The term “ball” includes any spherical, ovoid, or ellipsoidal object that is attached to a toy or article by means of string, elastic cord, or similar tether. The term “ball” also includes any multisided object formed by connecting planes into a generally spherical ovoid, or ellipsoidal shape that is designated or intended to be used as a ball. The term “ball” does not include dice, or balls permanently enclosed inside pinball machines, mazes, or similar outer containers. A ball is permanently enclosed if, when tested in accordance with 16 CFR 1500.53, it is not removed from the outer container.

3.1.8 *base material*—material upon which coatings may be formed or deposited.

3.1.9 *battery, button cell*—small round non-lithium battery, in which the overall height is less than the diameter.

3.1.9.1 *Discussion*—

This definition is from ANSI C18.1M Part 1; these batteries are typically identified by a SR or LR designation; for example: SR44, LR44, SR45, LR45, SR54, LR54.

3.1.10 *battery, coin cell*—small round lithium battery, in which the overall height is less than the diameter.

3.1.10.1 *Discussion*—

This definition is from ANSI C18.1M Part 1; these batteries are typically identified by a CR designation; for example: CR1620, CR2016, CR2020, CR2032, CR3032.

3.1.11 *battery-operated toy*—toy having at least one function dependent on electricity and powered by batteries.

3.1.12 *burr*—a roughness that may be found at an edge or joint of a toy or component if the material is not severed or finished cleanly.

3.1.13 *C-weighted peak sound pressure level,  $L_{Cpeak}$* —the peak sound pressure level obtained when using standardized C-weighting.

3.1.14 *close-to-the-ear toy*—a toy that is intended to be used close to the ear, that is, the ~~sound-emitting~~ sound-emitting part of such a toy is normally put against the ear of a child (example—toy telephones that emit sounds from the earpiece).

3.1.14.1 *Discussion*—

While these toys may be held in the hand(s), they are distinguished from “hand-held” toys, as defined in 3.1.37, by their typical use distance.

3.1.15 *coating*—all layers of material formed or deposited on the base material or toy and includes paints, varnishes, lacquers, or other substances of a similar nature, whether they contain metallic particles or not, which can be removed by scraping with a sharp blade as defined under 16 CFR 1303, et seq.

3.1.16 *collapse*—sudden or unexpected folding of a structure.

3.1.17 *common household tool*—screwdriver (straight-blade or Phillips-type), pliers, coin, or other object commonly found in most households and which may be used to operate a screw, clip, or similar fixing device.

3.1.18 *compression spring*—spring which essentially returns to its initial state after compression.



3.1.19 *constant air inflatables*—structure relying on a continuous supply of air pressure supplied from one or more electrical blowers to maintain its shape, typically made of flexible fabric and designed for children’s use that may include but not be limited to the following activities: bounce, climb, slide, or interactive play.

3.1.20 *cord*—a length of slender, flexible material including monofilaments, woven and twisted cord, rope, plastic textile tapes, ribbon, and those fibrous materials commonly called string.

3.1.21 *cosmetics*—for the purposes of this standard, cosmetics are items meeting the Federal Food, Drug, and Cosmetics Act definition of a cosmetic (“any articles intended or likely to be rubbed, sprinkled, or sprayed on, introduced onto, or otherwise applied to the human body for cleansing, beautifying, promoting or enhancing attractiveness, or for altering appearance”) that are sold as part of or included with a toy, including such items sold for imitative or “dress-up” play, as well as similar items which are intended to be applied to a toy (examples: eye shadow or lip gloss intended to be applied to a doll’s face; such items are not subject to FDCA labeling requirements). “Cosmetics” also includes temporary tattoos.

3.1.22 *crushing*—injury to part of the body resulting from compression between two rigid surfaces.

3.1.23 *curled edge*—an edge in which the portion of the sheet adjacent to the edge is bent into an arc and forms an angle of less than 90° with the base sheet, as shown in Fig. 2.

3.1.24 *detection limit of a method*—three times the standard deviation of the blank value.

3.1.25 *discharge mechanism*—a component(s) of the toy which releases or propels the projectile into free flight.

3.1.26 *edge, hazardous*—an accessible edge that presents an unreasonable risk of injury during the normal use and reasonably foreseeable abuse of a toy. Metal and glass edges on toys intended for children under the age of eight years are defined as potentially hazardous if they fail the sharp edge test described in 16 CFR 1500.49. Edges other than metal and glass are defined as potentially hazardous if they are sharp to the touch under casual handling conditions.

3.1.27 *elastic*—material that will recover its former size and shape essentially and instantaneously after being elongated at least 10 % at a testing speed of not less than ~~20~~ 20 in. (510 in. (510 mm)/min./min.

ASTM F963-23  
<https://standards.iteh.ai/catalog/standards/sist/e1bdc561-a185-4707-af65-fc574b6b90b5/astm-f963-23>

3.1.28 *expanding material*—any material used in a toy which expands greater than 50 % in any dimension from its as-received state (see when 8.30.2), at any time interval, tested in accordance with 8.30 when measured after 6, 24, 48, and 72 hours of submersion in deionized water as specified in 8.30.3 – 8.30.5.

3.1.29 *explosive action*—the sudden release of energy characterized by the rapid expansion or bursting of a material.

3.1.30 *extension spring*—spring which essentially returns to its initial state after tension.

3.1.31 *fastener*—mechanical device which attaches two or more elements together (for example, screws, rivets, and staples).

3.1.32 *feathering*—the beveling of an edge (or decrease in thickness moving toward the edge) caused during the shearing or cutting of material.

3.1.33 *flash*—excess material that escapes between the mating parts of a mold assembly.

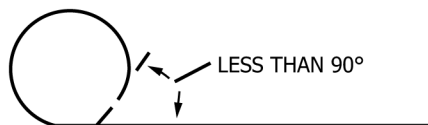


FIG. 2 Curled Edge

3.1.34 *folding mechanism*—an assembly of hinged, pivoted, folding, or sliding members that can produce a crushing, scissoring, pinching, or shearing action during operation.

3.1.35 *free flight*—unconstrained travel caused by a force, other than gravity alone, through the air in a trajectory regardless of whether the travel is ultimately constrained by means of a tether (for example, pop-gun).

3.1.36 *fuzz*—bits of fibrous-type material that can be readily removed from toys with a pile surface.

3.1.37 *hand-held toy*—a toy that is intended to be used or operated while being held in the hand. Examples include toy tools, small electronic games, stuffed animals, dolls, musical toys, and cap-firing toys.

3.1.37.1 Discussion—

This definition does not include close-to-the-ear toys, as defined in 3.1.14.

3.1.38 *hazard*—any characteristic of a toy that presents an unreasonable risk of injury or illness during normal use or as a result of reasonably foreseeable abuse.

3.1.39 *hazardous magnet*—a magnet which is a small object (refer to 4.6 and Fig. 3) and which has a flux index  $\geq 50$  (as determined in accordance with the test method in 8.25.1).

3.1.40 *hazardous magnetic component*—any part of a toy that is a small object (refer to 4.6 and Fig. 3) and which contains an attached or imbedded magnet which has a flux index  $\geq 50$  (as determined in accordance with the test method in 8.25.1).

3.1.41 *helical spring*—spring in the form of a coil.

3.1.42 *hemmed edge*—an edge in which the portion of the sheet adjacent to the edge is folded back on the sheet itself through an angle of approximately 180°, so that the portion of the sheet adjacent to the edge is approximately parallel to the main sheet, as shown in Fig. 4.

iTeh Standards  
(<https://standards.itih.ai>)  
Document Preview

ASTM F963-23

<https://standards.itih.ai/catalog/standards/sist/e1bc9a185-4707-af65-fc574b6b90b5/astm-f963-23>

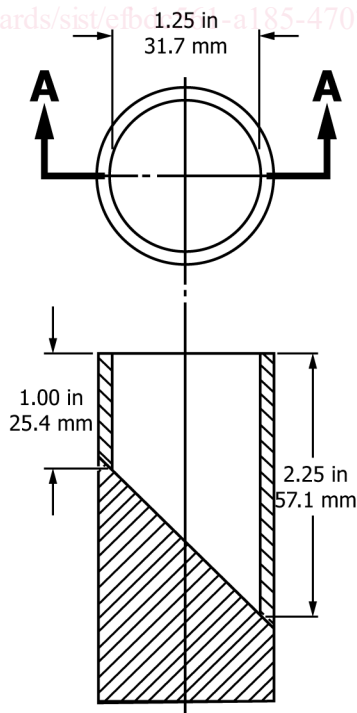


FIG. 3 Small Parts Cylinder



FIG. 4 Hemmed Edge

3.1.43 *hinge-line clearance*—the distance between the stationary portion of a toy and the movable portion along, or adjacent to, a line projected through the axis of rotation, shown as Dimension A in Fig. 5.

3.1.44 *juvenile products*—consumer products designed or intended primarily for use by children which are not used primarily for play. These include, but are not limited to, items such as bassinets/cradles, bath seats, infant bath tubs, carriages and strollers, changing tables, full size cribs, gates and enclosures, handheld infant carriers, high chairs, infant bouncers, infant swings, play yards/non-full size cribs, portable bed rails, portable hook-on chairs, soft infant carriers, stationary activity centers, toddler beds and walkers.

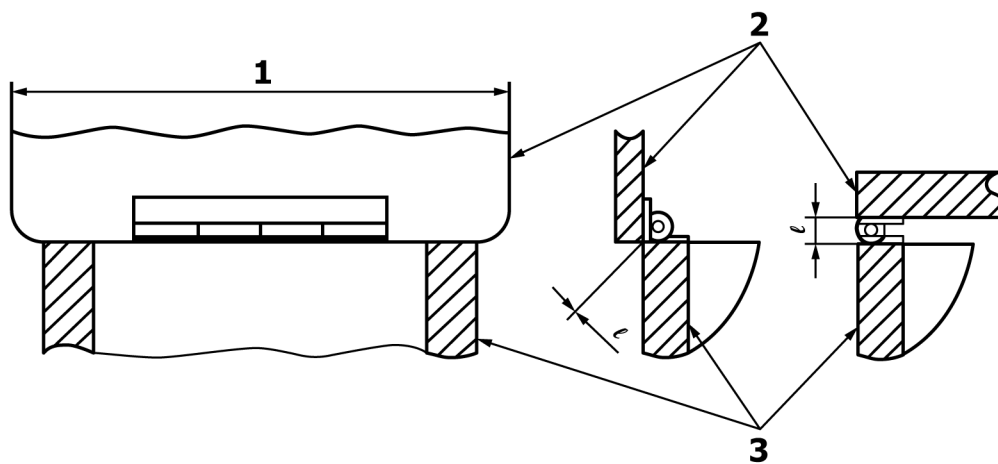
3.1.45 *lap joint*—a joint in which an edge overlaps a parallel surface but is not necessarily attached to it mechanically at all points along the length, as in the examples shown in Fig. 6.

3.1.46 *large and bulky toy*—toy that has a projected base area of more than 400 in.<sup>2</sup> (0.26 m<sup>2</sup>) or a volume of more than 3 ft<sup>3</sup> (0.08 m<sup>3</sup>) calculated without regard to minor appendages.

iTeh Standards  
(<https://standards.iteh.ai>)  
Document Preview

ASTM F963-23

<https://standards.iteh.ai/catalog/standards/sist/e1bdc561-a185-4707-af65-fc574b6b90b5/astm-f963-23>

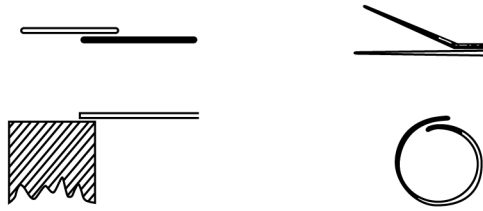


**Key**

- 1 Hinge line
- 2 Lid
- 3 Box

$l$  = Hinge-line clearance

FIG. 5 Changing Clearance at Hinge Line



**FIG. 6 Typical Lap Joints**

NOTE 2—The base area for toys having permanently attached legs is measured by calculating the area enclosed by straight lines connecting the outermost edge of each leg of the perimeter.

3.1.47 *latex balloon*—any toy or decorative item consisting of a latex bag that is designed to be inflated by air or gas. The term does not include inflatable children’s toys that are used in aquatic activities such as rafts, water wings, swim rings, or other similar items.

3.1.48 *leading edge(s)*—the location(s) on or area(s) of the projectile (for example, tips, edges, or protrusions), which would be expected to make contact with the eyeball in the event of an intentional or unintended launch toward the eye.

3.1.48.1 *Discussion*—

This would include all areas that could reasonably be expected to strike the eye in situations where the projectile may travel in unpredictable orientations (for example, tumbling). In determining whether an edge can strike the eye, the size and spherical shape of the eye should be considered.

3.1.49 *magnetic/electrical experimental set*—toy containing one or more magnets intended for carrying out educational experiments involving both magnetism and electricity.

3.1.50 *marble*—a sphere made of a hard material, such as glass, agate, marble, or plastic, that is used in various children’s games, generally as a playing piece or marker. The term “marble” does not include a marble permanently enclosed in a toy or game. A marble is permanently enclosed if, when tested in accordance with 16 CFR 1500.53, it is not removed from the toy or game.

<https://standards.iteh.ai/catalog/standards/sist/e1bdc561-a185-4707-af65-fc574b6b90b5/astm-f963-23>

3.1.51 *materials intended to leave a trace*—graphite material in pencils, liquid in pens, and similar substances.

3.1.52 *maximum A-weighted sound pressure level,  $L_{AFmax}$* —the maximum sound pressure level obtained when using standardized A-weighting and fast detector response (time-weighting).

3.1.53 *non-replaceable battery*—an electrochemical device that is not consumer accessible, is not intended to be replaced after the useful life of the battery, and is not accessible when tested in accordance with the normal use and, where appropriate, reasonably foreseeable abuse tests.

3.1.53.1 *Discussion*—

Reasonably foreseeable abuse tests are included in 8.6 – 8.10.

3.1.54 *normal use*—play modes that conform to the instructions accompanying the toy, that have been established by tradition or custom, or that are evident from an examination of the toy.

3.1.55 *other materials, whether mass colored or not*—materials such as wood, leather, and other porous substances which may absorb coloring matter without forming a coating.

3.1.56 *packaging*—material accompanying the toy when purchased, but having no intended play function.

3.1.57 *pinching*—created when two moving or one moving and one fixed surface come together in such a way that they could entrap and compress flesh, usually resulting in a contusion or laceration.

3.1.58 *point, hazardous*—an accessible point that presents an unreasonable risk of injury during normal use or reasonably foreseeable abuse. Points on toys intended for children under the age of 8 years are potentially hazardous if they fail the sharp point test described in 16 CFR 1500.48.

3.1.59 *pompom*—lengths or strands of fiber, yarns, or threads clamped or secured and tied in the center, and brushed up to form a spherical shape. Also included are spherical-shaped attachments made of stuffed material.

3.1.60 *primary battery*—one or more primary cells, including case, terminals, and markings.

3.1.61 *primary cell*—basic functional unit providing a source of electrical energy by direct conversion of chemical energy, which consists of an assembly of electrodes, separators, electrolyte, container, and terminals, and that is not designed to be electrically recharged.

3.1.62 *principal display panel*—the display panel for a retail package or container, bin, or vending machine that is most likely to be displayed, shown, presented, or examined under normal or customary conditions of display for retail sale.

3.1.63 *projectile*—an object intended to be launched into a free flight.

3.1.63.1 *Discussion*—

This does not include self-propelled flying toys such as remote control helicopters and wind-up airplanes. (See Rationale for additional explanation.)

3.1.64 *projectile toy with stored energy*—toy with a projectile launched by means of a discharge mechanism capable of storing energy independent of the user and typically requiring at least one discrete action by the user to launch the projectile.

3.1.64.1 *Discussion*—

This includes toy rockets and similar toys propelled by a chemical reaction or compressed gasses (for example, air) where the energy can be stored independent of the user. For example, in a rocket propelled by a mixture of vinegar and baking soda, the user initiates the reaction by mixing the two substances but no longer has control of the actual launching. The rocket will launch when the pressure build up overcomes the force that holds the rocket onto the launch platform.

3.1.65 *projectile toy without stored energy*—toy with a projectile propelled by energy imparted by the user or by means of a discharge mechanism incapable of storing energy independent of the user.

3.1.66 *projection, hazardous*—a projection that, because of its material or configuration, or both, may present a puncture hazard if a child should fall onto it. Excluded from this definition are puncture hazards to the eyes or mouth, or both, because of the impossibility of eliminating puncture hazards to those areas of the body by product design.

3.1.67 *protective cap or cover*—a component that is attached to a potentially hazardous edge or projection to reduce the possibility of injury.

3.1.68 *protective tip*—a component that is attached to the impacting end of a projectile to minimize injury if it should impact on the body, and also to prevent damage to the projectile upon striking a target, provide a means of attaching the projectile to the target as in the case of suction cups, or prevent damage to inanimate objects.

3.1.69 ~~*push/pull*~~ *push or pull toy*—a toy with a ~~cord/tether or a cord, tether, or handle~~ attached to the toy and where the toy is intended for use on the floor or ground with the child in a standing/upright position, typically walking, while ~~using~~ pushing or pulling the toy.

3.1.70 *rattle*—a toy that is clearly designed to emit sound when shaken and typically intended for children under 18 months.

3.1.71 *reasonably foreseeable abuse*—conditions to which a child may subject a toy that are not normal use conditions, such as deliberate disassembly, dropping, or using the toy for a purpose for which it was not intended. Simulated use and abuse tests for toys are given in 16 CFR 1500.50-53 (excluding the bite test, Paragraph (c), of each section).

3.1.72 *reference box*—a hypothetical surface which is the smallest rectangular parallelepiped that encloses the toy without regard to minor appendages.

3.1.73 *removable component*—a component of a toy which is intended or likely to be removed by the child during normal use.

3.1.74 *resilient leading edge*—a leading edge of a projectile made with any material having a Shore A scale durometer of 70 or less.

3.1.74.1 *Discussion*—

The measurement shall be performed in accordance with the latest revision of Test Method **D2240**.

3.1.75 *rigid*—any material having a hardness greater than 70 Shore A scale durometer, as measured by the latest revision of Test Method **D2240**.

3.1.76 *rigid leading edge*—a leading edge of a projectile made with any material having a Shore A scale durometer greater than 70.

3.1.76.1 *Discussion*—

The measurement shall be performed in accordance with the latest revision of Test Method **D2240**.

3.1.77 *rolled edge*—an edge in which the portion of the sheet adjacent to the edge is bent into an arc and forms an angle between 90 and 120° with the main sheet, as shown in **Fig. 7**.

3.1.78 *scraping*—mechanical removal of coatings down to the base material without damaging the substrate material.

3.1.79 *secondary battery*—assembly of secondary cell(s) ready for use as a source of electrical energy characterized by its voltage, size, terminal arrangement, capacity, and rate capability.

3.1.80 *secondary cell*—basic functional unit providing a source of electrical energy by direct conversion of chemical energy, which consists of electrodes, separators, electrolyte, container and terminals, and that is designed to be electrically recharged.

3.1.81 *simulated protective equipment*—toys designed to mimic products that infer some sort of physical protection to the wearer (for example, protective helmets and visors).

3.1.82 *soft-filled toy/stuffed toy*—toy, clothed or unclothed, with soft body surfaces and filled with soft materials, allowing compression of the torso readily with the hand.

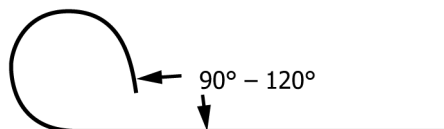
3.1.83 *splinter*—sharp pointed fragment.

3.1.84 *spiral spring*—clockwork-type spring.

3.1.85 *squeeze toy*—a handheld pliable toy, intended for children under the age of 18 months, usually incorporating a noise-making feature activated by forcing air through an opening when flexed or squeezed, and which recovers to its original shape when released.

3.1.86 *steady-state sound (noise)*—noise in which there are negligibly small fluctuations of sound pressure level within the period of observation.

3.1.87 *strap*—a piece of flexible material in which the width is significantly greater than the thickness.



**FIG. 7 Rolled Edge**