

SLOVENSKI STANDARD

SIST EN 12241:2000

01-julij-2000

Gdf]Ya bU'nUd]fU'U!`A YfcXU'nU'nUj]lc`dfYX`dfUbYa `]b`gi yYbYa `U]`_Ya] b]a
jy YbYa

Touch and close fasteners - Method for closure prior to washing and drying or dry cleaning

Haftverschlüsse - Verschließverfahren vor dem Waschen und Trocknen oder Chemischreinigen

iTeh STANDARD PREVIEW
(standards.iteh.ai)

Fermetures auto-agrippantes - Méthode de fermeture avant lavage, séchage ou avant nettoyage a sec

[SIST EN 12241:2000](https://standards.iteh.ai/catalog/standards/sist/c5ac5980-b580-4506-9756-1645a9e9a89a/sist-en-12241-2000)

[https://standards.iteh.ai/catalog/standards/sist/c5ac5980-b580-4506-9756-](https://standards.iteh.ai/catalog/standards/sist/c5ac5980-b580-4506-9756-1645a9e9a89a/sist-en-12241-2000)

[1645a9e9a89a/sist-en-12241-2000](https://standards.iteh.ai/catalog/standards/sist/c5ac5980-b580-4506-9756-1645a9e9a89a/sist-en-12241-2000)

Ta slovenski standard je istoveten z: EN 12241:1999

ICS:

61.040

Ú[\!ãæZÖ[åæ Å
[à|æ ã[{ ÅU] ^} bæ b Å à|æ ã

Headgear. Clothing accessories. Fastening of clothing

SIST EN 12241:2000

en

iTeh STANDARD PREVIEW
(standards.iteh.ai)

SIST EN 12241:2000

<https://standards.iteh.ai/catalog/standards/sist/c5ac5980-b580-4506-9756-1645a9e9a89a/sist-en-12241-2000>

EUROPEAN STANDARD
NORME EUROPÉENNE
EUROPÄISCHE NORM

EN 12241

October 1999

ICS 61.040

English version

Touch and close fasteners - Method for closure prior to washing
and drying or dry cleaning

Fermetures auto-agrippantes - Méthode de fermeture avant
lavage, séchage ou avant nettoyage à sec

Haftverschlüsse - Verschließverfahren vor dem Waschen
und Trocknen oder Chemischreinigen

This European Standard was approved by CEN on 5 September 1999.

CEN members are bound to comply with the CEN/CENELEC Internal Regulations which stipulate the conditions for giving this European Standard the status of a national standard without any alteration. Up-to-date lists and bibliographical references concerning such national standards may be obtained on application to the Central Secretariat or to any CEN member.

This European Standard exists in three official versions (English, French, German). A version in any other language made by translation under the responsibility of a CEN member into its own language and notified to the Central Secretariat has the same status as the official versions.

CEN members are the national standards bodies of Austria, Belgium, Czech Republic, Denmark, Finland, France, Germany, Greece, Iceland, Ireland, Italy, Luxembourg, Netherlands, Norway, Portugal, Spain, Sweden, Switzerland and United Kingdom.

[SIST EN 12241:2000](https://standards.iteh.ai/catalog/standards/sist/c5ac5980-b580-4506-9756-1645a9e9a89a/sist-en-12241-2000)

<https://standards.iteh.ai/catalog/standards/sist/c5ac5980-b580-4506-9756-1645a9e9a89a/sist-en-12241-2000>



EUROPEAN COMMITTEE FOR STANDARDIZATION
COMITÉ EUROPÉEN DE NORMALISATION
EUROPÄISCHES KOMITEE FÜR NORMUNG

Central Secretariat: rue de Stassart, 36 B-1050 Brussels

Foreword

This European Standard has been prepared by Technical Committee CEN/TC 248 "Textiles and textile products", the secretariat of which is held by BSI.

This European Standard shall be given the status of a national standard, either by publication of an identical text or by endorsement, at the latest by April 2000, and conflicting national standards shall be withdrawn at the latest by April 2000.

According to the CEN/CENELEC Internal Regulations, the national standards organizations of the following countries are bound to implement this European Standard: Austria, Belgium, Czech Republic, Denmark, Finland, France, Germany, Greece, Iceland, Ireland, Italy, Luxembourg, Netherlands, Norway, Portugal, Spain, Sweden, Switzerland and the United Kingdom.

It is one of a series of standards for touch and close fasteners. Other standards in the series are as follows:

EN 1414 Touch and close fasteners - Cycling procedures for subsequent testing

EN 1415 Touch and close fasteners - Behaviour of slit selvages

EN 1416 Touch and close fasteners - Determination of curvature

EN 12240 Touch and close fasteners - Determination of the overall and effective width of tapes and the effective width of a closure.

EN 12242:1999 Touch and close fasteners - Determination of peel strength.

EN 12243:1999 Touch and close fasteners - Determination of dimensional change in washing and drying and dry cleaning.

EN XXXX ¹⁾ Touch and close fasteners - Determination of longitudinal shear strength.

EN XXXX ¹⁾ Touch and close fasteners - Determination of vertical tension strength.

EN XXXX ¹⁾ Touch and close fasteners - Resistance to fraying of tapes after cutting.

EN XXXX ¹⁾ Touch and close fasteners - Specification.

1 Scope

This European Standard specifies a method for closing a touch and close fastener, prior to washing and drying or dry-cleaning.

¹⁾ In preparation



2 Normative References

This European Standard incorporates by dated or undated reference, provisions from other publications. These normative references are cited at the appropriate places in the text and the publications are listed hereafter. For dated references, subsequent amendments to or revisions of any of these publications apply to this European Standard only when incorporated in it by amendment or revision. For undated references the latest edition of the publication referred to applies.

- EN 20139 Textiles - Standard atmospheres for conditioning and testing (ISO 139:1973).
- EN 12240 Touch and close fasteners - determination of the overall and effective widths of tapes and the effective width of a closure.

3 Principle

Male and female tapes of a touch and close fastener are pressed together in a controlled manner by passing a prescribed metal roller over the mated tapes.

4 Apparatus

4.1 Metal roller made of phosphor-bronze with a smooth surface and diameter of (100 ± 2) mm (see figure 1) which shall be selected in accordance with table 1:

SIST EN 12241:2000
<https://standards.iteh.ai/standards/sist/12241-2000/1643a9c9a89a/sist-en-12241-2000>

Effective width of closure (W) as determined by EN 12240 mm		Metal roller mass kg
$W \leq 12,0$		$1,0 \pm 0,1$
12,0	$12,0 < W \leq 25,0$	$2,5 \pm 0,1$
25,0	$25,0 < W \leq 52,0$	$5,0 \pm 0,1$
$W > 52,0$		$10,0 \pm 0,1$

NOTE: The most important parameters for the roller are its diameter and mass; its width should be chosen in accordance with the specific density of the phosphor-bronze used in its manufacture.

4.2 Set of forks with a handle (see figure 2) which engages the metal roller (4.1), and allows the roller to be moved without any extra down force being applied (see figure 3).

4.3 Flat surface (for example a table)

5 Test specimens

Cut sufficient test specimens, in number and length, from both the male and female tapes in accordance with the requirements of any subsequent test method.

6 Conditioning

Condition the test specimens for a minimum of 24h, in accordance with the standard temperate atmosphere for testing, as specified in EN 20139. The closing of the test specimens and the testing of the tapes shall also take place under these conditions.

7 Procedure

Make each closure as follows:

Place the male tape on the flat surface with the pile uppermost and then place the female tape on top with the pile facing downwards so that the full length and width of the tapes make a closure, using minimal hand pressure.

Traverse the metal roller (4.1), at a rate of approximately 200 mm/s along the tapes in one direction then immediately reverse and traverse in the other direction then turn the mating tapes over. Repeat the procedure until the roller has traversed the mating tapes five times in each direction i.e. a total of ten times.

Take care that the centre of gravity of the roller does not deviate from the centre line of the tapes during this operation. Take care that the roller covers the entire width of the mating tapes

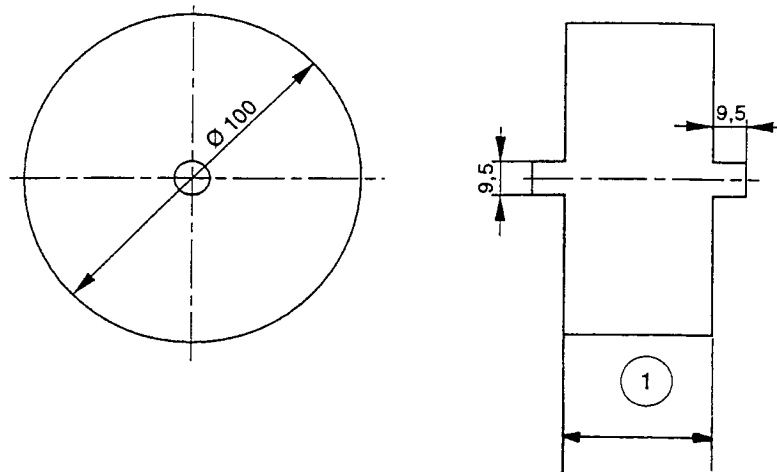
NOTE: The tapes are turned over to minimise curvature.

8 Test report

Report the following information:

- a) number and date of this European Standard;
- b) date of the test;
- c) identification of the touch and close fastener tapes;
- d) any deviation from this standard and any incident likely to have affected the results.

Dimensions in millimetres

**Key:**

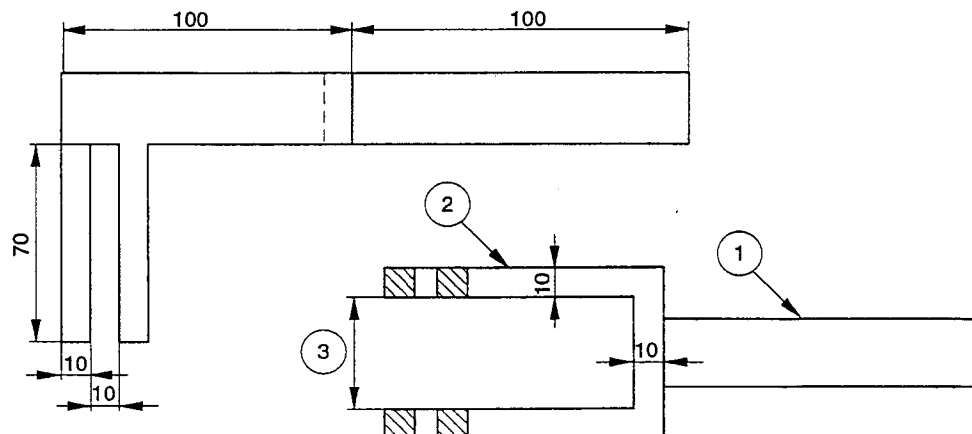
1 Choose roller width to meet specified mass

iTeh STANDARD PREVIEW
Figure 1: Metal roller
 (standards.iteh.ai)

SIST EN 12241:2000

Dimensions in millimetres

<https://standards.iteh.ai/catalog/standards/sist/c5ac5980-b580-4506-9756-1645a9e9a89a/sist-en-12241-2000>

**Key:**

1 Handle

2 Forks

3 Space between the forks to be 2 mm greater than the roller width.

Figure 2: Set of forks with a handle

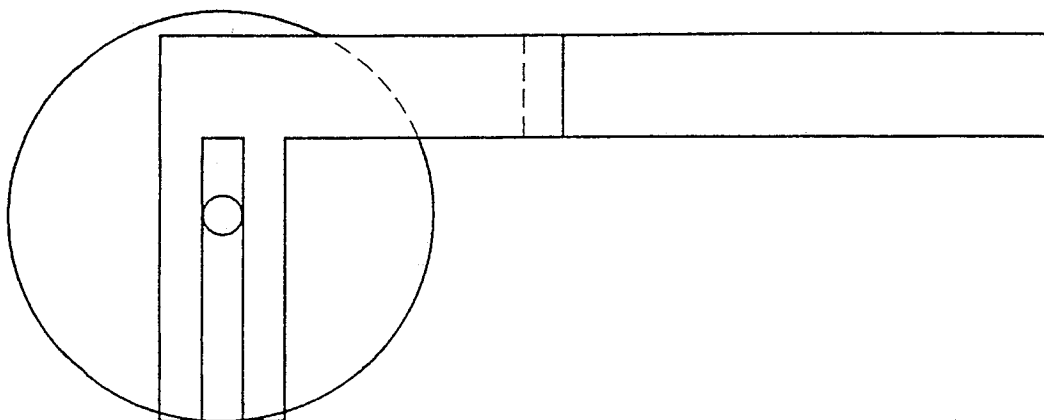


Figure 3: Rolling mechanism for touch and close fasteners

iTeh STANDARD PREVIEW
(standards.iteh.ai)

SIST EN 12241:2000

<https://standards.iteh.ai/catalog/standards/sist/c5ac5980-b580-4506-9756-1645a9e9a89a/sist-en-12241-2000>