



Designation: ~~D1711~~–~~22~~ D1711 – 24

Standard Terminology Relating to Electrical Insulation¹

This standard is issued under the fixed designation D1711; the number immediately following the designation indicates the year of original adoption or, in the case of revision, the year of last revision. A number in parentheses indicates the year of last reapproval. A superscript epsilon (ϵ) indicates an editorial change since the last revision or reapproval.

INTRODUCTION

This terminology is used in connection with testing and specifying solid electrical insulating materials. Modifications to this terminology, reflecting common usage, may appear in particular test methods, material specifications, practices, or other standards. Included herein are terms pertinent to general applications, electrical insulating papers, mica, mica processing, processed mica forms, hookup wire insulation, and partial discharge (corona).

1. Scope*

1.1 This terminology standard is a compilation of technical terms associated with testing and specifying solid electrical and electronic insulating materials.

1.2 This terminology standard shall contain all definitions that are balloted specifically through Subcommittee D09.94 and through D09 main committee and that are of general interest to standards associated with electrical and electronic insulating materials. Those definitions shall be of importance to electrical and electronic insulating materials issues but need not be directly associated with a specific standard under the jurisdiction of Committee D09 on Electrical and Electronic Insulating Materials.

1.3 It is intended that all definitions in this terminology standard originating in a specific standard under the jurisdiction of Committee D09 be identical to definitions of the same terms as printed in standards of originating technical subcommittees, with the exceptions of: (1) deletion of any part of the Discussion included in another standard that refers specifically to the use of a term in that standard; (2) figure numbers and corresponding references; and (3) in this terminology standard, a parenthetical addition of a reference to one or more technical standards in which the term is used and the year in which the term was added to this compilation.

1.3.1 Definitions contained in this terminology standard which did not originate in a specific standard under the jurisdiction of Committee D09, or which originated in a standard that has since been revised or withdrawn, and that have been appropriately balloted, shall also be included in this terminology standard.

1.4 It is permissible to include symbols as part of the representation of terms, where appropriate.

1.5 It is not intended that this terminology standard include symbols (except as noted in 1.4). It is also permissible to include acronyms and abbreviations referring directly to defined terms.

¹ This terminology is under the jurisdiction of ASTM Committee D09 on Electrical and Electronic Insulating Materials and is the direct responsibility of Subcommittee D09.94 on Editorial.

Current edition approved Sept. 1, 2022 March 1, 2024. Published October 2022 March 2024. Originally approved in 1960. Last previous edition approved in 2020 2022 as ~~D1711 – 20~~ D1711 – 22. DOI: ~~10.1520/D1711-22~~ 10.1520/D1711-24.

*A Summary of Changes section appears at the end of this standard

1.6 Revisions and additions to those definitions in this terminology standard which originate in a specific standard under the jurisdiction of Committee D09 are to be made as a product of a collaborative effort between Subcommittee D09.94 and the corresponding technical subcommittee of Committee D09, with Subcommittee D09.94 providing editorial advice to the technical subcommittees.

1.7 Each definition in this terminology standard shall be accompanied by the year in which it was first incorporated into the standard, placed at the end in parentheses. All discussions shall also carry a date; it is possible that the discussion date is different from the definition date.

1.8 1.8.1 – 1.8.3 contain references to specific terminology standards that are relevant to specific electrical insulating materials or applications. In case of conflict between a definition contained in Terminology D1711 and one contained in another standard, the definition given in Terminology D1711 shall prevail.

1.8.1 For terms related to plastics, the applicable definitions are contained in Terminology D883.

1.8.2 For terms relating to fire, the applicable definitions are contained in Terminology E176 and ISO 13943. In case of conflict between Terminology E176 and ISO 13943, the definitions given in Terminology E176 shall prevail.

1.8.3 For terms relating to precision and bias and associated issues, the applicable definitions are contained in Terminology E456.

1.9 *This international standard was developed in accordance with internationally recognized principles on standardization established in the Decision on Principles for the Development of International Standards, Guides and Recommendations issued by the World Trade Organization Technical Barriers to Trade (TBT) Committee.*

2. Referenced Documents

2.1 ASTM Standards:²

- [D115 Test Methods for Testing Solvent Containing Varnishes Used for Electrical Insulation](#)
- [D149 Test Method for Dielectric Breakdown Voltage and Dielectric Strength of Solid Electrical Insulating Materials at Commercial Power Frequencies](#)
- [D150 Test Methods for AC Loss Characteristics and Permittivity \(Dielectric Constant\) of Solid Electrical Insulation](#)
- [D176 Test Methods for Solid Filling and Treating Compounds Used for Electrical Insulation \(Withdrawn 2013\)³](#)
- [D202 Test Methods for Sampling and Testing Untreated Paper Used for Electrical Insulation](#)
- [D257 Test Methods for DC Resistance or Conductance of Insulating Materials](#)
- [D470 Test Methods for Crosslinked Insulations and Jackets for Wire and Cable](#)
- [D883 Terminology Relating to Plastics](#)
- [D1000 Test Methods for Pressure-Sensitive Adhesive-Coated Tapes Used for Electrical and Electronic Applications](#)
- [D1676 Test Methods for Film-Insulated Magnet Wire](#)
- [D1830 Test Method for Thermal Endurance of Flexible Sheet Materials Used for Electrical Insulation by the Curved Electrode Method](#)
- [D1868 Test Method for Detection and Measurement of Partial Discharge \(Corona\) Pulses in Evaluation of Insulation Systems](#)
- [D2303 Test Methods for Liquid-Contaminant, Inclined-Plane Tracking and Erosion of Insulating Materials](#)
- [D2304 Test Method for Thermal Endurance of Rigid Electrical Insulating Materials](#)
- [D2307 Test Method for Thermal Endurance of Film-Insulated Round Magnet Wire](#)
- [D2519 Test Method for Bond Strength of Electrical Insulating Varnishes by the Helical Coil Test](#)
- [D2671 Test Methods for Heat-Shrinkable Tubing for Electrical Use](#)
- [D2967 Test Method for Corner Coverage of Powder Coatings](#)
- [D3032 Test Methods for Hookup Wire Insulation](#)
- [D3056 Test Method for Gel Time of Solventless Varnishes](#)
- [D3145 Test Method for Thermal Endurance of Electrical Insulating Varnishes by Helical Coil Method](#)
- [D3214 Test Methods for Coating Powders and Their Coatings Used for Electrical Insulation \(Withdrawn 2002\)³](#)
- [D3288/D3288M Test Methods for Magnet-Wire Enamels](#)
- [D3312 Test Method for Percent Reactive Monomer in Solventless Varnishes](#)

² For referenced ASTM standards, visit the ASTM website, www.astm.org, or contact ASTM Customer Service at service@astm.org. For *Annual Book of ASTM Standards* volume information, refer to the standard's Document Summary page on the ASTM website.

³ The last approved version of this historical standard is referenced on www.astm.org.

- D3353 Test Methods for Fibrous-Insulated Magnet Wire
- D3382 Test Methods for Measurement of Energy and Integrated Charge Transfer Due to Partial Discharges (Corona) Using Bridge Techniques
- D3426 Test Method for Dielectric Breakdown Voltage and Dielectric Strength of Solid Electrical Insulating Materials Using Impulse Waves
- D3636 Practice for Sampling and Judging Quality of Solid Electrical Insulating Materials
- D3755 Test Method for Dielectric Breakdown Voltage and Dielectric Strength of Solid Electrical Insulating Materials Under Direct-Voltage Stress
- D4313 Specification for General-Purpose, Heavy-Duty, and Extra-Heavy-Duty Crosslinked Chlorinated Polyethylene (CPE) Jackets For Wire and Cable
- D4323 Test Method for Hydrogen Sulfide in the Atmosphere by Rate of Change of Reflectance
- D4470 Test Method for Static Electrification
- D4496 Test Method for D-C Resistance or Conductance of Moderately Conductive Materials
- D4733 Test Methods for Solventless Electrical Insulating Varnishes
- D4880 Test Method for Salt Water Proofness of Insulating Varnishes Over Enamelled Magnet Wire
- D4881 Test Method for Thermal Endurance of Varnished Fibrous- or Film-Wrapped Magnet Wire
- D4882 Test Method for Bond Strength of Electrical Insulating Varnishes by the Twisted-Coil Test
- D5288 Test Method for Determining Tracking Index of Electrical Insulating Materials Using Various Electrode Materials (Excluding Platinum)
- D6053 Test Method for Determination of Volatile Organic Compound (VOC) Content of Electrical Insulating Varnishes
- [E176 Terminology of Fire Standards](#)
- [E456 Terminology Relating to Quality and Statistics](#)

2.2 Other Standards:

- [ANSI/ASQC A2-1987 Terms, Symbols, and Definitions for Acceptance Sampling](#)^{4,5}
- [GB/T 26667 Terminology for Electromagnetic Shielding Materials](#)⁶
- [ISO 13943 Fire Safety-Vocabulary](#)⁷

3. Terminology

absorbing material, *n*—material capable of absorbing energy from an electromagnetic wave.⁸ (2014)

acceptable quality level (AQL), *n*—the maximum percent nonconforming which, for purposes of sampling inspection, is considered satisfactory as a process average. (2011) **D3636**

<https://standards.iteh.ai/catalog/standards/astm/2419bd2a-a7fd-4664-b4b4-65d94da3554b/astm-d1711-24>

acceptance number, *n*—the maximum allowable number of nonconformities for a given AQL and sample size (lot-sample size). (2011) **D3636**

aging (act of), *n*—exposure of material to air or oil at a temperature and time as specified in the relevant material specification for that material. (2013) **D470, D4313, D4323**

air chain, *n*—*in mica*, a series of air inclusions in the form of a chain or streak. (2011)

arc propagation, *n*—the movement of an electric arc from its point of inception to another location. (1996) **D3032**

arc tracking, *n*—the process producing tracks when arcs occur on or close to the insulation surface. (2011)

Arrhenius plot, *n*—a graph of the logarithm of thermal life as a function of the reciprocal of absolute temperature. (2011)

⁴ Available from American National Standards Institute (ANSI), 25 W. 43rd St., 4th Floor, New York, NY 10036, <http://www.ansi.org>.

⁵ ASQC A2 has been superseded and replaced by ASQC 3534-2, published by the American Society for Quality, 600 North Plankinton Road, PO Box 3005, Milwaukee, WI 53201 United States, www.asq.org.

⁶ Available from Standardization Administration of China, Haidian District, Beijing, People's Republic of China.

⁷ Available from International Organization for Standardization (ISO), ISO Central Secretariat, Chemin de Blandonnet 8, CP 401, 1214 Vernier, Geneva, Switzerland, <https://www.iso.org>.

⁸ This term is defined in a way similar to the way it appears in the GB/T 26667 standard entitled, "Terminology for Electromagnetic Shielding Materials."

DISCUSSION—

This is normally depicted as the best straight line fit, determined by least squares, of end points obtained at aging temperatures. It is important that the slope, which is the activation energy of the degradation reaction, be approximately constant within the selected temperature range to ensure a valid extrapolation. (2011) **D2304**

ash content of paper, n —the solid residue remaining after combustion of the paper under specified conditions, expressed as a percentage of the dry mass of the original paper. (1996) **D202**

average discharge (corona) current (I_t), n —the sum of the absolute magnitudes of the individual discharges during a certain time interval divided by that time interval. (2011)

DISCUSSION—

When the discharges are measured in coulombs and the time interval in seconds, the calculated current will be in amperes. (2011)

$$I_t = \frac{\sum_{t_0}^{t_1} Q_1 + Q_2 + \dots + Q_n}{t_1 - t_0} \quad (1)$$

where:

- I_t = average current, A,
- t_0 = starting time, s,
- t_1 = completion time, s, and
- Q_1, Q_2, Q_n = partial discharge quantity in a corona pulse 1 through n , C.

D1868

binder tape—see **core wrap (binder tape)**.

bond strength, n —a measure of the force required to separate surfaces which have been bonded together. (1996)

D2519, D3145, D4882

braid, n —(1) woven metallic wire used as a shield for insulated conductors and cables.

(2) A woven fibrous protective outer covering over an insulated conductor or cable. (2011)

breakdown voltage—see **dielectric breakdown voltage**.

bursting strength of paper, n —the hydrostatic pressure required to produce rupture of a circular area of the material under specified test conditions. (1996) **D202**

cable wrap, n —paper used for mechanical protection or for space-filling (rather than as electrical insulation) in low-voltage cables with nonmetallic sheaths. (2011)

capacitance, C, n —that property of a system of conductors and dielectrics which permits the storage of electrically separated charges when potential differences exist between the conductors. (2011)

DISCUSSION—

Capacitance is the ratio of a quantity, q , of electricity to a potential difference, V . A capacitance value is always positive. The units are farads when the charge is expressed in coulombs and the potential in volts (2011):

$$C = q/V \quad (2)$$

D150

capacitor tissue, n —very thin (5 to 50 μm) pure, nonporous paper used as the dielectric in capacitors, usually in conjunction with an insulating liquid. (2011)

coating powder, n —a heat-fusible, finely-divided solid resinous material used to form electrical insulating coatings. (1996)

D2967, D3214

concentricity, *n*—the ratio, expressed in percent, of the minimum wall thickness to the maximum wall thickness. (2011) **D2671**

concentric-lay conductor, *n*—a conductor composed of a central core surrounded by one or more layers of helically laid strands. (2011)

DISCUSSION—

In the most common type of concentric-lay conductor, all strands are of the same size and the central core is a single strand. (2011)

conductance, insulation, *n*—the ratio of the total volume and surface current between two electrodes (on or in a specimen) to the dc voltage applied to the two electrodes. (2011)

DISCUSSION—

Insulation conductance is the reciprocal of insulation resistance. (2011)

D257

conductance, surface, *n*—the ratio of the current between two electrodes (on the surface of a specimen) to the dc voltage applied to the electrodes. (2011)

DISCUSSION—

(Some volume conductance is unavoidably included in the actual measurement.) Surface conductance is the reciprocal of surface resistance. (2011)

D257

conductance, volume, *n*—the ratio of the current in the volume of a specimen between two electrodes (on or in the specimen) to the dc voltage applied to the two electrodes. (2011)

DISCUSSION—

Volume conductance is the reciprocal of volume resistance. (2011)

D257

conducting material (conductor), *n*—a material within which an electric current is produced by application of a voltage between points on, or within, the material. (2011)

DISCUSSION—

The term “conducting material” is usually applied only to those materials in which a relatively small potential difference results in a relatively large current since all materials appear to permit some conduction current. Metals and strong electrolytes are examples of conducting materials. (2011)

D4470

ASTM D1711-24

conductive fiber, *n*—fiber which is a conductive material or is otherwise made conductive on the surface.⁸ (2014)

conductive gasket, *n*—conductive material used at a joint to ensure effective conductive contact.⁸ (2014)

conductivity, surface, *n*—the surface conductance multiplied by that ratio of specimen surface dimensions (distance between electrodes divided by the width of electrodes defining the current path) which transforms the measured conductance to that obtained if the electrodes had formed the opposite sides of a square. (2011)

DISCUSSION—

Surface conductivity is expressed in siemens. It is popularly expressed as siemens/square (the size of the square is immaterial). Surface conductivity is the reciprocal of surface resistivity. (2011)

D257

conductivity, volume, *n*—the volume conductance multiplied by that ratio of specimen volume dimensions (distance between electrodes divided by the cross-sectional area of the electrodes) which transforms the measured conductance to that conductance obtained if the electrodes had formed the opposite sides of a unit cube. (2011)

DISCUSSION—

Volume conductivity is usually expressed in siemens/centimetre or in siemens/metre and is the reciprocal of volume resistivity. (2011)

D257

conductor, *n*—a wire, or combination of wires not insulated from each other, suitable for carrying electric current. (1996) **D1676**

continuous partial discharges (continuous corona), *n*—discharges that recur at rather regular intervals; for example on approximately every cycle of an alternating voltage or at least once per minute for an applied direct voltage. (2011) **D1868**

core wrap (binder tape), *n*—paper used to wrap groups of insulated wire into cable configuration prior to sheathing. (2011)

DISCUSSION—

Usually, this term is applied to telephone communication cables in which core wrap is not regularly subjected to voltage stress, but may be exposed to surges from lightning strokes or other accidental events. (2011)

corona, *n*—visible partial discharges in gases adjacent to a conductor. (2011)

DISCUSSION—

This term has also been used to refer to partial discharges in general. (2011)

D1868

critical property, *n*—a quantitatively measurable characteristic which is absolutely necessary to be met if a material or product is to provide satisfactory performance for the intended use. (2011)

DISCUSSION—

In some situations, specification requirements coincide with customer usage requirements. In other situations, they may not coincide, being either more or less stringent. More stringent sampling (for example, smaller AQL values) is usually used for measurement of characteristics which are considered critical. The selection of sampling plans is independent of whether the term defect or nonconformity is appropriate. (2011)

D3636

cross grains or reeves, *n*—*in mica*, tangled laminations causing imperfect cleavage. (2011)

crude mica—mica as mined; crude crystals with dirt and rock adhering. (2011)

crystallographic discoloration, *n*—*in mica*, discoloration appearing as bands of lighter or darker shades of basic color of a block of mica. (1996)

DISCUSSION—

Such bands are generally parallel to the crystallographic faces of the crystal from which the block was separated. (2011)

defect, *n*—a departure of a quality characteristic from its intended level, or state, that occurs with a severity sufficient to cause an associated product or service not to satisfy intended normal, or reasonably foreseeable, usage requirements. (2011)

DISCUSSION—

The terms “defect” and “nonconformity” and their derivatives are used somewhat interchangeably in the historical and current literature. Nonconformity objectively describes the comparison of test results to specification requirements, while the term defect has a connotation of predicting the failure of a product or service to perform its intended function in use. Since this latter connotation is often unintended, the term nonconformity is preferred in full consensus standards. The selection of any sample plan is independent of whether the term defect or nonconformity is appropriate.

The term defect may be appropriate for specifications mutually agreed upon by a producer and a user where specific use conditions are clearly understood. Even in these cases however, use the term defect with caution and consider substituting the term nonconformity.

For additional comments, see ANSI/ASQC A2-1987 that also states: “When a quality characteristic of a product or service is “evaluated” in terms of conformance to specification requirements, the use of the term nonconformity is appropriate.” (2011)

D3636

dielectric, *n*—a medium in which it is possible to maintain an electric field with little supply of energy from outside sources. (2011)

DISCUSSION—

The energy required to produce the electric field is recoverable, in whole or in part. A vacuum, as well as any insulating material, is a dielectric. (2011)

dielectric breakdown voltage (electric breakdown voltage), *n*—the potential difference at which dielectric failure occurs under prescribed conditions, in an electrical insulating material located between two electrodes. (See also Test Method **D149**, Appendix X1.) (2011)

DISCUSSION—

The term **dielectric breakdown voltage** is sometimes shortened to “breakdown voltage.” (2011)

D149

dielectric constant—see **relative permittivity**.

dielectric failure (under test), *n*—an event that is evidenced by an increase in conductance in the dielectric under test limiting the electric field that can be sustained. (2011)

D149

dielectric strength, n —the voltage gradient at which dielectric failure of the insulating material occurs under specific conditions of test. (2011) **D149, D176, D3755**

dip encapsulation (a type of conformal coating), n —an embedding process in which the insulating material is applied by immersion and without the use of an outer container. (2011)

DISCUSSION—

The coating so formed generally conforms with the contour of the embedded part. (2011)

dissipation factor (loss tangent) ($\tan \delta$), D, n —the ratio of the loss index to its relative permittivity or

$$D = \kappa''/\kappa' \tag{3}$$

It is also the tangent of its loss angle, δ , or the cotangent of its phase angle, θ . (See Figs. 1 and 2.) (2011)

DISCUSSION—

a:

$$D = \tan \delta = \cot \theta = X_p/R_p = G/\omega C_p = 1/\omega C_p R_p \tag{4}$$

where:

- G = equivalent ac conductance,
- X_p = parallel reactance,
- R_p = equivalent ac parallel resistance,
- C_p = parallel capacitance, and
- ω = $2\pi f$ (sinusoidal wave shape assumed).

The reciprocal of the dissipation factor is the quality factor, Q , sometimes called the storage factor. The dissipation factor, D , of the capacitor is the same for both the series and parallel representations as follows:

$$D = \omega R_s C_s = 1/\omega R_p C_p \tag{5}$$

The relationships between series and parallel components are as follows:

$$C_p = C_s/(1+D^2) \tag{6}$$

(2011)

$$R_p/R_s = (1+D^2)/D^2 = 1+(1/D^2) = 1+Q^2$$

ASTM D1711-24

DISCUSSION—

b: *Series Representation*—While the parallel representation of an insulating material having a dielectric loss (Fig. 3) is usually the proper representation, it is always possible and occasionally desirable to represent a capacitor at a single frequency by a capacitance, C_s , in series with a resistance, R_s (Figs. 4 and 2). (2011)

drainage, n —of an insulating varnish, a measure of the variation in thickness from top to bottom of a varnish film obtained on the surface of a vertically dipped coated panel after a specified time and temperature. (1996) **D115**

dressed crude mica, n —crude mica from which the dirt and rock have been mainly removed. (1996)

DISCUSSION—

Some small pieces of inferior mica are produced and separated at this stage. This by-product is called splitting block, and can be used for the production of splittings. (2011)

electric breakdown voltage—see **dielectric breakdown voltage**. (2011)

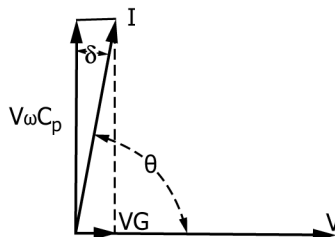


FIG. 1 Vector Diagram for Parallel Circuit

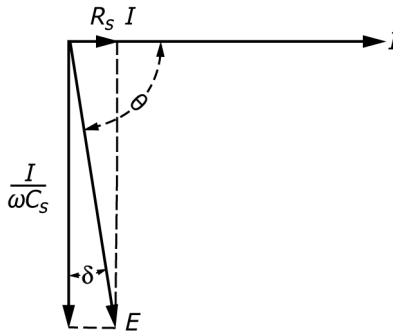


FIG. 2 Vector Diagram for Series Circuit

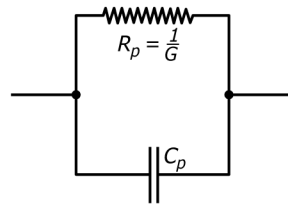


FIG. 3 Parallel Circuit

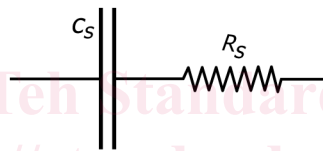


FIG. 4 Series Circuit

electric field strength, n —the magnitude of the vector force on a point charge of unit magnitude and positive polarity. (2011)
<https://standards.iteh.ai/catalog/standards/astm/2419bd2a-a7fd-4664-b4b4-65d94da3554b/astm-d1711-24> **D4470**

electric strength—see **dielectric strength**.

electrically conductive adhesive, n —adhesive which exhibits electrical conductivity.⁸ (2014)

electrically conductive yarn, n —yarn that provides electrical conductivity and has been made either by blending a conductive fiber with other fiber(s) or otherwise made conductive on the surface.⁸ (2014)

electrification time, n —the time during which a steady direct potential is applied to electrical insulating materials before the current is measured. (2011)

electrolytic capacitor paper, n —very pure, porous paper, 17 to 100 μm thick, used to separate the metallic electrodes in electrolytic capacitors. (2011)

electromagnetic shielding coating, n —coating that has an electromagnetic shielding capability and can be applied onto a substrate.⁸ (2014)

electromagnetic shielding fabric, n —fabric, woven or non-woven, with an electromagnetic shielding capability.⁸ (2014)

electromagnetic shielding film, n —film with an electromagnetic shielding capability.⁸ (2014)

electromagnetic shielding plastic, *n*—polymeric material with an electromagnetic shielding capability that is manufactured by combining a plastic material with a conductive substance.⁸ (2014)

electromagnetic shielding plate, *n*—plate-like electromagnetic shielding material used for constructing an electromagnetic shielding shell and which serves to shield electromagnetic fields.⁸ (2014)

electromagnetic shielding rubber, *n*—electromagnetic shielding material formed by adding an electrically conductive material to a rubber substrate, while retaining the elastomeric characteristics of the rubber.⁸ (2014)

DISCUSSION—

Materials typically used as conductive materials are silver, nickel, and carbon.

electromagnetic shielding tape, *n*—tape with an electromagnetic shielding function which is intended for adhesion.⁸ (2014)

embedding, *n*—a general term for all methods of surrounding or enclosing components and assemblies with a substantial thickness of electrically insulating solid or foam material with voids and interstices between the parts substantially filled. See **potting**, **encapsulation**, and **dip encapsulation**. (2011)

encapsulation, *n*—an embedding process utilizing removable molds or other techniques in which the insulating material forms the outer surfaces of the finished unit. (2011)

erosion, electrical, *n*—the progressive wearing away of electrical insulation by the action of electrical discharges. (2011) **D2303**

erosion resistance, electrical, *n*—the quantitative expression of the amount of electrical erosion under specific conditions. (2011) **D2303**

excess electrostatic charge, *n*—the algebraic sum of all positive and negative electric charges on the surface of, or in, a specific volume. (2011) **D4470**

[ASTM D1711-24](https://standards.iteh.ai/catalog/standards/astm/2419bd2a-a7fd-4664-b4b4-65d94da3554b/astm-d1711-24)

<https://standards.iteh.ai/catalog/standards/astm/2419bd2a-a7fd-4664-b4b4-65d94da3554b/astm-d1711-24>
failure—see **dielectric failure**.

films, *n*—trimmed mica split to specific ranges of thickness under 0.15 mm processed from block and thins. (2011)

flashover (as related to electrical), *n*—an electrical discharge between two electrodes which occurs around the surface of a solid dielectric in the surrounding medium (2019). **D149, D3755**

flash point, *n*—the lowest temperature of a specimen, corrected to a pressure of 760 mm Hg (101.3 kPa), at which application of an ignition source causes any vapor from the specimen to ignite under specified conditions of test. (1996) **D115**

flat cable, *n*—any cable with two smooth or corrugated, but essentially flat, surfaces. (2011)

flat conductor, *n*—a conductor with a width-to-thickness ratio arbitrarily chosen as five-to-one or greater. (2011)

flat conductor cable, *n*—a cable of flat conductors. (2011)

FR, *n*—a designation noting that an electrical insulating material has been subjected to a standard test for flammability and has a rating in accordance with that standard. (2011)

DISCUSSION—

The designation **FR**, when used in describing materials, does not imply flame or fire resistance. (2011)

full-impulse-voltage wave, *n*—an aperiodic transient voltage that rises rapidly to a maximum value, then falls less rapidly to zero. (2011) **D3426**

gel time, *n*—of solventless varnish, the time required, at a specified temperature, for a solventless varnish to be transformed from a liquid state to a gel, as measured with a suitable gel time apparatus. (1996) **D3056, D4733**

group AQL, *n*—the AQL assigned to a group of material properties. (2011)

DISCUSSION—

See 5.2.2 of Practice **D3636** for additional information about the meaning of AQL. (2011)

D3636

guard electrode, *n*—one or more electrically conducting elements, arranged and connected in an electric instrument or measuring circuit so as to divert unwanted conduction or displacement currents from, or confine wanted currents to, the measurement device. (2011)

hard mica, *n*—mica which when slightly bent shows no tendency to delaminate. (2011)

DISCUSSION—

Thick pieces will give a hard sound when tapped or dropped on a hard surface. (2011)

harness, *n*—one or more hookup bundles tied, clamped, or otherwise fitted together for final installation; used for interconnecting electrical circuits. (2011)

herringbones, *n*— in mica, numerous rulings that intersect to form a series of “V’s” with included angles of about 120°. (2011)

hookup bundle, *n*—a group of insulated conductors or hookup cables grouped into an assembly prior to installation, usually with multiple breakouts. (2011)

hookup cable, *n*—two or more insulating conductors in a common covering, or two or more insulated conductors twisted or molded together without a common covering, or one or more insulated conductors with a conductive shield with or without an outer covering. (2011)

hookup wire, *n*—an insulated conductor that is used to make point-to-point connections in an electrical or electronic system. (2011)

impregnation time of paper, *n*—the time in seconds required for a liquid of specified composition and viscosity to penetrate completely from one face of a sheet of paper to the other under certain prescribed conditions. (1996) **D202**

inclusions, *n*—foreign matter in the mica.

air inclusions appear by transmitted light as grayish areas and as silvery areas by reflected light. These are gaseous inclusions.

clay inclusions appear by any light as areas of blue, gray, brown, and so forth, and are intrusions of earthy materials.

mineral inclusions appear by transmitted light as areas of deep distinct and highly saturated colors such as black, brown, green, red, and so forth. These are concentrated metallic oxides.

vegetable and smokey inclusions appear by transmitted light as areas of pastel colors of low to medium saturation such as pale yellow, pale brown, pale green, and so forth. These are dispersed metallic oxides. The term “vegetable” is a misnomer. (2011)

infrared, *adj*—pertaining to the region of the electromagnetic spectrum from approximately 0.78 to 300 μm . (1996) **D3288D3288/D3288M**

insulated conductor, *n*—a conductor covered by a layer or layers of insulating material and whose prime function is to carry current in an electric circuit. (2011)