

SLOVENSKI STANDARD
SIST EN 300 394-4-11 V1.1.1:2003
01-december-2003

Prizemni snopovni radio (TETRA) - Specifikacija za preskušanje skladnosti - 4. del: Specifikacija za preskušanje protokola za neposredno obratovanje (DMO) -- 11. poddel: Zgradba preskušalnega niza in nameni preskušanja (TSS&TP) za ponavljalnik (repetitor) tipa 2 mobilne postaje

Terrestrial Trunked Radio (TETRA); Conformance testing specification; Part 4: Protocol testing specification for Direct Mode Operation (DMO); Sub-part 11: Test Suite Structure and Test Purposes (TSS&TP) for Mobile Station Repeater type 2

ITeH STANDARD PREVIEW
(standards.iteh.ai)

[SIST EN 300 394-4-11 V1.1.1:2003](https://standards.iteh.ai/catalog/standards/sist/0e9b8b53-8879-46de-b5b5-39ebce24989c/sist-en-300-394-4-11-v1-1-1-2003)

<https://standards.iteh.ai/catalog/standards/sist/0e9b8b53-8879-46de-b5b5-39ebce24989c/sist-en-300-394-4-11-v1-1-1-2003>

Ta slovenski standard je istoveten z: EN 300 394-4-11 Version 1.1.1

ICS:

33.070.10	Prizemni snopovni radio (TETRA)	Terrestrial Trunked Radio (TETRA)
-----------	---------------------------------	-----------------------------------

SIST EN 300 394-4-11 V1.1.1:2003 **en**

iTeh STANDARD PREVIEW
(standards.iteh.ai)

SIST EN 300 394-4-11 V1.1.1:2003

<https://standards.iteh.ai/catalog/standards/sist/0e9b8b53-8879-46de-b5b5-39ebce24989c/sist-en-300-394-4-11-v1-1-1-2003>

ETSI EN 300 394-4-11 V1.1.1 (2001-01)

European Standard (Telecommunications series)

**Terrestrial Trunked Radio (TETRA);
Conformance testing specification;
Part 4: Protocol testing specification for
Direct Mode Operation (DMO);
Sub-part 11: Test Suite Structure and Test Purposes (TSS&TP)
for Mobile Station Repeater type 2**

iTeh STANDARD PREVIEW
(standards.iteh.ai)

[SIST EN 300 394-4-11 V1.1.1:2003](https://standards.iteh.ai/catalog/standards/sist/0e9b8b53-8879-46de-b5b5-39ebce24989c/sist-en-300-394-4-11-v1-1-1-2003)

<https://standards.iteh.ai/catalog/standards/sist/0e9b8b53-8879-46de-b5b5-39ebce24989c/sist-en-300-394-4-11-v1-1-1-2003>



Reference

DEN/TETRA-02009-4-11

KeywordsDMO, protocol, radio, testing, TETRA, TSS&TP,
TTCN**ETSI**650 Route des Lucioles
F-06921 Sophia Antipolis Cedex - FRANCE

Tel.: +33 4 92 94 42 00 Fax: +33 4 93 65 47 16

Siret N° 348 623 562 00017 - NAF 742 C
Association à but non lucratif enregistrée à la
Sous-Préfecture de Grasse (06) N° 7803/88

iTeh STANDARD PREVIEW
(standards.iteh.ai)

[SIST EN 300 394-4-11 V1.1.1:2003](https://standards.iteh.ai/catalog/standards/sist/0e9b8b53-8879-46de-b5b5-39ebce24989c/sist-en-300-394-4-11-v1-1-1-2003)<https://standards.iteh.ai/catalog/standards/sist/0e9b8b53-8879-46de-b5b5-39ebce24989c/sist-en-300-394-4-11-v1-1-1-2003>

Important notice

Individual copies of the present document can be downloaded from:

<http://www.etsi.org>

The present document may be made available in more than one electronic version or in print. In any case of existing or perceived difference in contents between such versions, the reference version is the Portable Document Format (PDF). In case of dispute, the reference shall be the printing on ETSI printers of the PDF version kept on a specific network drive within ETSI Secretariat.

Users of the present document should be aware that the document may be subject to revision or change of status. Information on the current status of this and other ETSI documents is available at <http://www.etsi.org/tb/status/>

If you find errors in the present document, send your comment to:
editor@etsi.fr

Copyright Notification

No part may be reproduced except as authorized by written permission.
The copyright and the foregoing restriction extend to reproduction in all media.

© European Telecommunications Standards Institute 2001.
All rights reserved.

Contents

Intellectual Property Rights	5
Foreword	5
1 Scope	6
2 References	6
3 Definitions and abbreviations	7
3.1 TETRA definitions	7
3.2 ISO/IEC 9646 abbreviations	7
3.3 TETRA abbreviations	7
4 Test Suite Structure (TSS)	8
4.1 DMCC layer test groups	8
4.2 MAC layer test groups	9
4.3 Test group description	9
5 Introduction to Test Purposes (TPs)	10
5.1 Test purpose definition conventions	10
5.1.1 TPs descriptions	10
5.1.2 Preamble descriptions	10
5.1.2.1 Preamble idle_to_TX_occupation: From Idle state to Call Active TX Occupation	11
5.1.2.2 Preamble idle_to_TX_reservation: From Idle state to Call Active TX Reservation	13
5.1.2.3 Preamble idle_to_RX_occupation: From Idle state to Call Active RX Occupation	15
5.1.2.4 Preamble idle_to_RX_reservation	16
5.1.2.5 Preamble idle_channel_occupation	17
5.1.3 Postamble descriptions	18
5.1.3.1 Postamble TX_occupation_to_idle: From Call Active TX Occupation state to Idle	18
5.1.3.2 Postamble TX_reservation_to_idle: From Call Active TX Reserved state to Idle	18
5.1.3.3 Postamble RX_occupation_to_idle: From Call Active RX Occupation state to Idle	19
5.1.3.4 Postamble RX_reservation_to_idle: From Call Active RX Reserved state to Idle	19
5.2 Test purpose naming conventions	20
5.3 Selection expressions	20
6 DMO MS-REP2 test purposes	22
6.1 DMCC Circuit Mode (CM) tests	22
6.1.1 MS-REP2 CM capability tests	22
6.1.2 MS-REP2 CM valid behaviour tests	23
6.1.2.1 The IUT is in idle state, DMO channel is free	23
6.1.2.2 IUT is in idle state, DMO channel is busy	25
6.1.2.3 IUT is in TX occupation state	25
6.1.2.4 IUT is in RX occupation state	26
6.1.2.5 IUT is in TX reservation state	27
6.1.2.6 IUT is in RX reservation state	29
6.1.3 MS-REP2 CM timer tests	30
6.1.3.1 DT303 Response to DM-SETUP PRES timer	30
6.1.3.2 DT311 Call transaction timer	30
6.2 DMCC Short data service (SDS)	31
6.2.1 MS-REP2 SDS Capability tests	31
6.2.2 MS-REP2 SDS Valid behaviour tests	31
6.2.2.1 IUT is in idle state, channel is free	31
6.2.2.2 IUT is in idle state, channel is busy	33
6.2.2.3 IUT is in state TX occupation	33
6.2.2.4 IUT is in RX occupation state	34
6.2.2.5 IUT is in TX reservation state	36
6.2.2.6 IUT is in RX reservation state	36
6.2.3 MS-REP2 SDS Timer tests	37
6.2.3.1 DT316 Response to DM-SDS DATA timer	37
6.3 DMO MS-REP2 layer 2: MAC layer	38

6.3.1	MS-REP2 MAC capability tests	38
6.3.2	MS-REP2 MAC valid behaviour tests	38
6.3.2.1	DM channel usage procedures.....	38
6.3.2.2	Signalling messages procedures	40
6.3.3	MS-REP2 MAC timer tests	44
Annex A (informative): Bibliography.....		45
History		46

iTeh STANDARD PREVIEW (standards.iteh.ai)

SIST EN 300 394-4-11 V1.1.1:2003

<https://standards.iteh.ai/catalog/standards/sist/0e9b8b53-8879-46de-b5b5-39ebce24989c/sist-en-300-394-4-11-v1-1-1-2003>

Intellectual Property Rights

IPRs essential or potentially essential to the present document may have been declared to ETSI. The information pertaining to these essential IPRs, if any, is publicly available for **ETSI members and non-members**, and can be found in ETSI SR 000 314: "*Intellectual Property Rights (IPRs); Essential, or potentially Essential, IPRs notified to ETSI in respect of ETSI standards*", which is available from the ETSI Secretariat. Latest updates are available on the ETSI Web server (<http://www.etsi.org/ipr>).

Pursuant to the ETSI IPR Policy, no investigation, including IPR searches, has been carried out by ETSI. No guarantee can be given as to the existence of other IPRs not referenced in ETSI SR 000 314 (or the updates on the ETSI Web server) which are, or may be, or may become, essential to the present document.

Foreword

This European Standard (Telecommunications series) has been produced by ETSI Project Terrestrial Trunked Radio (TETRA).

The present document had been submitted to Public Enquiry as ETS 300 394-4-11. During the processing for Vote it was converted into an EN.

The present document is part 4 of a multi-part deliverable covering Terrestrial Trunked Radio (TETRA); Conformance testing specification, as identified below:

- Part 1: "Radio";
- Part 2: "Protocol testing specification for Voice plus Data (V+D)";
- Part 3: "Protocol testing specification for Packet Data Optimized (PDO)";
- Part 4: "Protocol testing specification for Direct Mode Operation (DMO)";**
- Part 5: "Security".

National transposition dates

Date of adoption of this EN:	22 December 2000
Date of latest announcement of this EN (doa):	31 March 2001
Date of latest publication of new National Standard or endorsement of this EN (dop/e):	30 September 2001
Date of withdrawal of any conflicting National Standard (dow):	30 September 2001

1 Scope

The present document contains the Test Suite Structure (TSS) and Test Purposes (TPs) to test the TETRA Direct Mode Operation (DMO) protocols. The present document is divided into several parts, each one dealing with a stack of protocols which includes layer 3 and layer 2 protocols. This present part 4, sub-part 11 deals with TSS&TP for a Direct Mode MS operating with a type 2 Repeater (MS-REP2) Air Interface protocol, while part 4, sub-part 1 deals with TSS&TP for DM MS to MS protocol and part 4, sub-part 12 deals with type 2 Repeater (DM-REP2) Air Interface protocol.

Testing of security features is outside the scope of the present document.

The objective of this test specification is to provide a basis for approval tests for TETRA equipment giving a high probability of air interface inter-operability between different manufacturer's TETRA equipment.

The ISO/IEC standard for the methodology of conformance testing, ISO/IEC 9646-1 [2] and ISO/IEC 9646-2 [3], as well as the ETSI methodology for conformance testing, ETS 300 406 [4], are used as the basis for the test methodology.

2 References

The following documents contain provisions which, through reference in this text, constitute provisions of the present document.

- References are either specific (identified by date of publication, edition number, version number, etc.) or non-specific.
- For a specific reference, subsequent revisions do not apply.
- For a non-specific reference, the latest version applies.

- [1] ETSI EN 300 396-4: "Terrestrial Trunked Radio (TETRA); Technical requirements for Direct Mode Operation (DMO); Part 4: Type 1 repeater air interface".
- [2] ISO/IEC 9646-1: "Information technology - Open Systems Interconnection - Conformance testing methodology and framework - Part 1: General concepts".
- [3] ISO/IEC 9646-2: "Information technology - Open Systems Interconnection - Conformance testing methodology and framework - Part 2: Abstract test suite specification".
- [4] ETSI ETS 300 406: "Methods for Testing and Specification (MTS); Protocol and profile conformance testing specifications; Standardization methodology".
- [5] ETSI EN 300 396-7: "Terrestrial Trunked Radio (TETRA); Technical requirements for Direct Mode Operation (DMO); Part 7: Type 2 repeater air interface".
- [6] ETSI EN 300 396-8-4: "Terrestrial Trunked Radio (TETRA); Technical requirements for Direct Mode Operation (DMO); Part 8: Protocol Implementation Conformance Statement (PICS) proforma specification; Sub-part 4: Type 2 repeater Air Interface (AI)".

3 Definitions and abbreviations

3.1 TETRA definitions

For the purposes of the present document, the terms and definitions given in EN 300 396-7 [5] apply.

3.2 ISO/IEC 9646 abbreviations

For the purposes of the present document, the following ISO/IEC 9646-1 [2] abbreviations apply:

ICS	Implementation Conformance Statement
IUT	Implementation Under Test
IXIT	Implementation eXtra Information for Testing
PDU	Protocol Data Unit
PICS	Protocol Implementation Conformance Statement
PIXIT	Protocol Implementation eXtra Information for Testing
TP	Test Purpose
TSS	Test Suite Structure

3.3 TETRA abbreviations

For the purposes of the present document, the following TETRA abbreviations apply:

CM	Circuit Mode
DMCC	Direct Mode Call Control
DMO	Direct Mode of Operation
FCS	Frame Check Sequence
MAC	Medium Access Control
MNI	Mobile Network Identity
MS	Mobile Station
RX	Receiver
SDS	Short Data Services
SDU	Service Data Unit
TX	Transmitter

4 Test Suite Structure (TSS)

4.1 DMCC layer test groups

The first level separates the DMCC layer (or layer 3) in different protocols (Circuit mode, Short Data Service). Next level splits protocol testing into functional test groups according to the type of testing: Capability test (CA), Valid Behaviour (BV) and Timer tests (TI). Further level classifies the possible operations in each protocol condition or state.

The following list defines the DMCC layer test group names and identifiers used for those:

- MS-REP2 Direct Mode Call Control (DMO_MSREP2_DMCC)

- Circuit mode (CM)

- Capability tests (CA)

- Valid Behaviour tests (BV)

- from Idle state (ID)

- from Idle state, channel busy (IB)

- from TX occupation State (TXO)

- from RX occupation State (RO)

- from TX Reservation (TR)

- from RX Reservation State (RR)

- Timer Tests (TI)

ITeH STANDARD PREVIEW
(standards.iteh.ai)

[SIST EN 300 394-4-11 V1.1.1:2003](https://standards.iteh.ai/catalog/standards/sist/0e9b8b53-8879-46de-b5b5-39ebce24989c/sist-en-300-394-4-11-v1-1-1-2003)

[https://standards.iteh.ai/catalog/standards/sist/0e9b8b53-8879-46de-b5b5-](https://standards.iteh.ai/catalog/standards/sist/0e9b8b53-8879-46de-b5b5-39ebce24989c/sist-en-300-394-4-11-v1-1-1-2003)

- Short Data Service (SDS) [39ebce24989c/sist-en-300-394-4-11-v1-1-1-2003](https://standards.iteh.ai/catalog/standards/sist/0e9b8b53-8879-46de-b5b5-39ebce24989c/sist-en-300-394-4-11-v1-1-1-2003)

- Capability tests (CA)

- Valid Behaviour tests (BV)

- from Idle state (ID)

- from Idle state, channel busy (IB)

- from RX occupation State (RO)

- from TX Reservation (TR)

- from RX Reservation State (RR)

- Timer Tests (TI)

4.2 MAC layer test groups

The first level of the MAC test groups separates the MAC test suite in functional test groups: CA, BV and TI. The second level of the test subgroups is a division of protocol requirements into functional entities.

The following list defines the MAC layer test group names and identifiers:

- MS-REP2 MAC layer (DMO_MSREP2_MAC)
 - Capability tests (CA)
 - Valid behaviour tests (BV)
 - Channel usage (CU)
 - Signalling messages (SM)
 - Traffic mode (TM)
 - Timer tests (TI)

4.3 Test group description

Capability (CA) tests provide limited testing that the observable capabilities of the IUT are in accordance with the conformance requirements and the additional capabilities claimed in the PICS/PIXIT.

The Valid Behaviour (BV) group tests an IUT in response to valid behaviour of the test system. "Valid" means that a test event is syntactically and contextually correct. All test cases in the valid behaviour group are intended to verify as thoroughly as possible the various functions of the protocol.

Different timers are defined to supervise the various state transitions. The Timer (TI) test group is intended to verify that the IUT is reacting properly to an expiry of one of the timers or to a counter mismatch.

<https://standards.iteh.ai/catalog/standards/sist/0e9b8b53-8879-46de-b5b5-39ebce24989c/sist-en-300-394-4-11-v1-1-1-2003>

5 Introduction to Test Purposes (TPs)

The test purposes for DMCC layer and MAC layer are defined in clause 6 of the present document. Each layer leads to a different test suite.

5.1 Test purpose definition conventions

5.1.1 TPs descriptions

Each TP is described using text presented in a table.

The table contains the following information:

Table 1

TP-Name The TP name is a unique identifier, specified according to the TP naming conventions defined in the clause below. (it is also the name of the corresponding test case)	Reference: reference to the clause number of specification EN 300 396-7 [5] stating this conformance requirement. For example: EN 300 396-7 [5], 6.2.5.1
Purpose	purpose of the test itself, indicating for example the test performed against a requirement of the protocol, described by this test purpose. Example: test of changeover initiated from RX reservation state
Test description	body of the test
Pass criteria	visible action to be observed at PCO to declare that the IUT passes the test and conforms to the specifications
Selection	expression based on EN 300 396-8-4 [6] PICS statements, used to select or deselect the corresponding test case according to the options of the implementation
Preamble	"None" or name of the preamble procedure bringing the IUT from idle state to the state required to run the test. For example: idle_to_RX_reservation
Postamble	"None" or name of the postamble to bring the IUT back to idle state, for example: RX_occupation_to_idle

The preambles and postambles are described using MSCs and are shown in the following clauses.

5.1.2 Preamble descriptions

Preambles are used to bring the IUT from the idle state to the state where the test takes place. As the protocol has different options, as for instance the use of presence check or the absence of presence check, there are several ways to reach a given state. The preamble has to be chosen according to the IUT capabilities and the implemented options.

5.1.2.1 Preamble idle_to_TX_occupation: From Idle state to Call Active TX Occupation

With presence check.

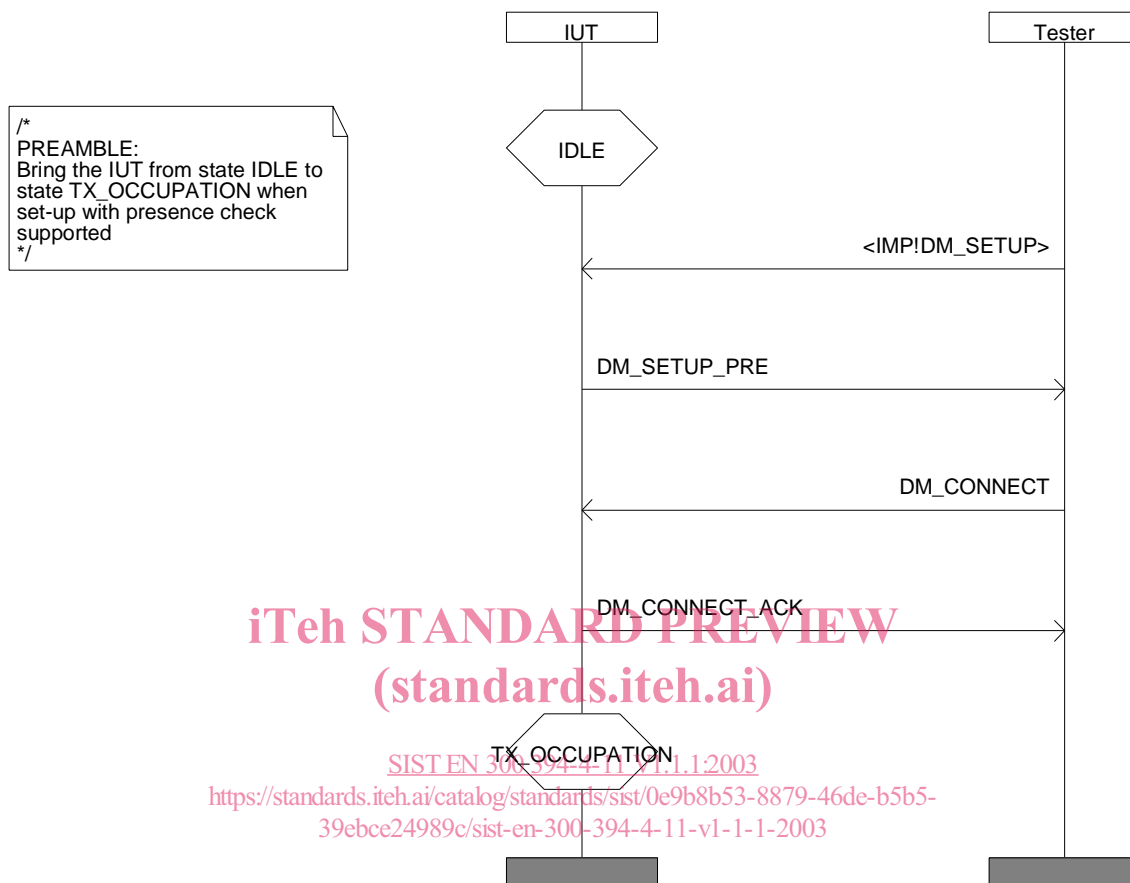


Figure 1