
International Standard



6124/2

INTERNATIONAL ORGANIZATION FOR STANDARDIZATION • МЕЖДУНАРОДНАЯ ОРГАНИЗАЦИЯ ПО СТАНДАРТИЗАЦИИ • ORGANISATION INTERNATIONALE DE NORMALISATION

**Spherical plain radial bearings, joint type —
Boundary dimensions —
Part 2 : Dimension series EW, bearings with extended
inner ring**

Rotules lisses d'articulation à contact radial — Dimensions d'encombrement — Partie 2 : Série de dimensions EW, rotules à bague intérieure large

ITC STANDARD PREVIEW

(standards.iteh.ai)

First edition — 1982-05-15

[ISO 6124-2:1982](https://standards.iteh.ai/catalog/standards/sist/790ab0b2-9f07-47a4-ad26-6a9a40eba91e/iso-6124-2-1982)

<https://standards.iteh.ai/catalog/standards/sist/790ab0b2-9f07-47a4-ad26-6a9a40eba91e/iso-6124-2-1982>

Library / Bibliothèque
Do not remove / Ne pas enlever

UDC 621.822.3/.5

Ref. No. ISO 6124/2-1982 (E)

Descriptors : bearings, plain bearings, radial bearings, spherical bearings, dimensions, dimensional tolerances.

Price based on 2 pages

Foreword

ISO (the International Organization for Standardization) is a worldwide federation of national standards institutes (ISO member bodies). The work of developing International Standards is carried out through ISO technical committees. Every member body interested in a subject for which a technical committee has been set up has the right to be represented on that committee. International organizations, governmental and non-governmental, in liaison with ISO, also take part in the work.

Draft International Standards adopted by the technical committees are circulated to the member bodies for approval before their acceptance as International Standards by the ISO Council.

International Standard ISO 6124/2 was developed by Technical Committee ISO/TC 4, *Rolling bearings*, and was circulated to the member bodies in November 1980.

ITeH STANDARD PREVIEW
(standards.iteh.ai)

It has been approved by the member bodies of the following countries :

ISO 6124-2:1982

Australia	Germany, F. R.	Poland
Austria	Hungary	Romania
Belgium	India	South Africa, Rep. of
Brazil	Italy	Spain
Canada	Japan	Sweden
China	Korea, Dem. P. Rep. of	Switzerland
Czechoslovakia	Korea, Rep. of	United Kingdom
Egypt, Arab Rep. of	Mexico	USA
France	Netherlands	USSR

No member body expressed disapproval of the document.

Spherical plain radial bearings, joint type — Boundary dimensions — Part 2 : Dimension series EW, bearings with extended inner ring

iTeh STANDARD PREVIEW
(standards.iteh.ai)

1 Scope and field of application

ISO 6125, *Spherical plain radial bearings, joint type — Tolerances.*

This Part of ISO 6124 specifies dimensions for spherical plain radial bearings, joint type, with extended inner rings.

These dimensions define the bearings geometrically but do not impose any restrictions as to material or manufacturing methods.

Chamfer dimension values are given as minimum values. Appropriate maximum values are the same as those specified in ISO 582 for rolling bearings.

Tolerances for the outer diameter and the outer ring width are given in ISO 6125.

2 References

ISO 286/1, *ISO system of limits and fits — Part 1 : General, tolerances and deviations.*¹⁾

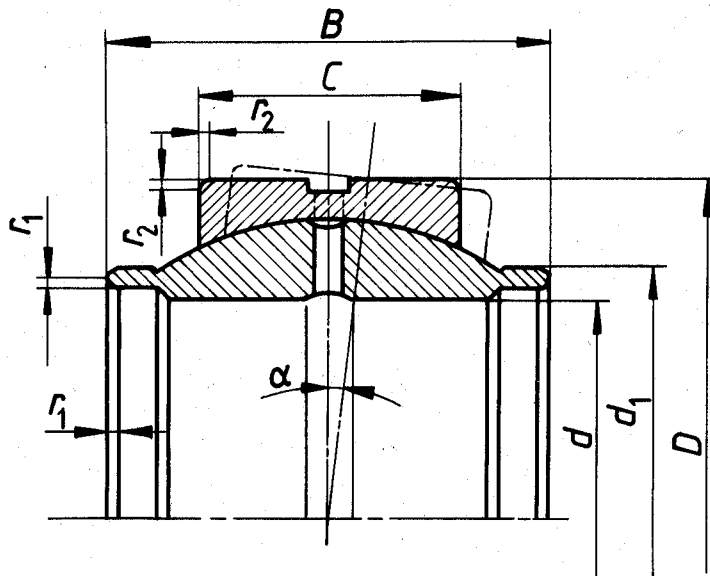
ISO 582, *Rolling bearings — Metric series — Chamfer dimension limits.*

3 Symbols

d	= bearing bore diameter, nominal
d_1	= outer diameter of inner ring face
D	= bearing outside diameter, nominal
B	= inner ring width, nominal
C	= outer ring width, nominal
r_1	= inner ring chamfer, height and width
r_2	= outer ring chamfer, height and width
$r_{1\text{min}}$	= smallest permissible single r_1
$r_{2\text{min}}$	= smallest permissible single r_2
α	= angle of permissible tilt

1) At present at the stage of draft. (Revision of ISO/R 286-1962.)

4 Dimensions and tolerances



Dimensions in millimetres, angle in degrees

d H7	D ¹⁾	B h12	C ¹⁾	d_1 max.	r_{1smin}	r_{2smin}	α ²⁾
12 ³⁾	22	12	7	15,5	0,3	0,6	4
16	28	16	9	20	0,3	0,6	4
20	35	20	12	25	0,6	0,6	4
25	42	25	16	30,5	0,6	0,6	4
32	52	32	18	37	0,6	1,0	4
40	62	40	22	46	0,6	1,0	4
50	75	50	28	57	0,6	1,0	4
63	95	63	36	71,5	1,0	1,0	4
80	120	80	45	91	1,0	1,0	4
100	150	100	55	113	1,0	1,0	4
125	180	125	70	138	1,0	1,0	4
160	230	160	80	177	1,0	1,0	4
200	290	200	100	221	1,1	1,1	4
250	400	250	120	350	1,1	1,1	4
320	520	320	160	470	1,1	1,1	4

1) Tolerances of the outer ring (D ; C) according to ISO 6125.

2) Approximate values.

3) Relubrication provided only in outer ring.