
Detail specification: Rectangular connectors - Flat contacts, 0,8 mm thickness, locking screw not detachable

Detail Specification: Rectangular connectors - Flat contacts, 0,8 mm thickness, locking screw not detachable

iTeh STANDARD PREVIEW

Spécification particulière: Connecteurs rectangulaires - Contacts plats, épaisseur de 0,8 mm, vis d'arrêt non détachable
(standards.iteh.ai)

[SIST EN 175301-803:2002](https://standards.iteh.ai/catalog/standards/sist/34062543-4fd3-4b8c-aba2-3cc7c707c0e1/sist-en-175301-803-2002)

Ta slovenski standard je istoveten z: EN 175301-803:1999

ICS:

31.220.10 Xcā } Ącā } ĄĀ [} ^ \ d ! ĩā Plug-and-socket devices.
Connectors

SIST EN 175301-803:2002

en

iTeh STANDARD PREVIEW
(standards.iteh.ai)

SIST EN 175301-803:2002

<https://standards.iteh.ai/catalog/standards/sist/34062543-4fd3-4b8c-aba2-5ec7c767c6e1/sist-en-175301-803-2002>

EUROPEAN STANDARD
NORME EUROPÉENNE
EUROPÄISCHE NORM

EN 175301-803

November 1999

ICS 31.220.10

Supersedes CECC 75 301-803:1996

English version

**Detail Specification:
Rectangular connectors - Flat contacts, 0,8 mm thickness,
locking screw not detachable**

Spécification particulière:
Connecteurs rectangulaires
Contacts plats, épaisseur de 0,8 mm,
vis d'arrêt non détachable

iTeh STANDARD PREVIEW
(standards.iteh.ai)

[SIST EN 175301-803:2002](https://standards.iteh.ai/catalog/standards/sist/34062543-4fd3-4b8c-aba2-5ec7c767c6e1/sist-en-175301-803-2002)

<https://standards.iteh.ai/catalog/standards/sist/34062543-4fd3-4b8c-aba2-5ec7c767c6e1/sist-en-175301-803-2002>

This European Standard was approved by CENELEC on 1999-10-01. CENELEC members are bound to comply with the CEN/CENELEC Internal Regulations which stipulate the conditions for giving this European Standard the status of a national standard without any alteration.

Up-to-date lists and bibliographical references concerning such national standards may be obtained on application to the Central Secretariat or to any CENELEC member.

This European Standard exists in three official versions (English, French, German). A version in any other language made by translation under the responsibility of a CENELEC member into its own language and notified to the Central Secretariat has the same status as the official versions.

CENELEC members are the national electrotechnical committees of Austria, Belgium, Czech Republic, Denmark, Finland, France, Germany, Greece, Iceland, Ireland, Italy, Luxembourg, Netherlands, Norway, Portugal, Spain, Sweden, Switzerland and United Kingdom.

CENELEC

European Committee for Electrotechnical Standardization
Comité Européen de Normalisation Electrotechnique
Europäisches Komitee für Elektrotechnische Normung

Central Secretariat: rue de Stassart 35, B - 1050 Brussels

Foreword

At the request of the Technical Committee CENELEC TC 48B, LF connectors, the text of CECC 75 301-803:1996, Issue 1, was submitted to the formal vote for conversion into a European Standard. It was approved by CENELEC as EN 175301-803 on 1999-10-01.

The following date was fixed:

- latest date by which the EN has to be implemented at national level by publication of an identical national standard or by endorsement

(dop) 2000-10-01

Contents

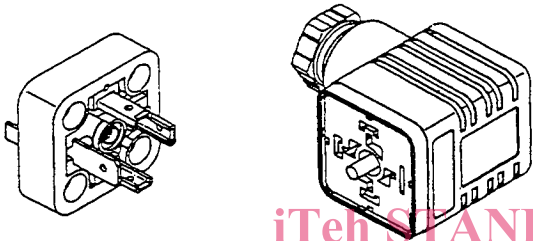
1	Scope	3
2	Related documents	4
3	Style designation	5
4	Common features	6
5	Dimensions	8
6	Characteristics	20
7	Test schedule	22
8	Quality assessment procedures	27
10	Ordering information	30

ITeh STANDARD PREVIEW
(standards.iteh.ai)

[SIST EN 175301-803:2002](https://standards.iteh.ai/catalog/standards/sist/34062543-4fd3-4b8c-aba2-5ec7c767c6e1/sist-en-175301-803-2002)

[https://standards.iteh.ai/catalog/standards/sist/34062543-4fd3-4b8c-aba2-](https://standards.iteh.ai/catalog/standards/sist/34062543-4fd3-4b8c-aba2-5ec7c767c6e1/sist-en-175301-803-2002)

[5ec7c767c6e1/sist-en-175301-803-2002](https://standards.iteh.ai/catalog/standards/sist/34062543-4fd3-4b8c-aba2-5ec7c767c6e1/sist-en-175301-803-2002)

<p>CECC WG25: LF Connectors</p> <p>Specification available from the addresses shown on the blue fly-sheet</p>	<p>EN 175301-803</p>
<p>ELECTRONIC COMPONENTS OF ASSESSED QUALITY</p> <p>– DETAIL SPECIFICATION IN ACCORDANCE WITH EN 175 300: 1992</p>	<p>Page 3 of 30 pages</p>
<p>see 5 for dimensions</p> 	<p>1 SCOPE</p> <p>Detail specification for rectangular connectors, flat contacts, 0,8 mm thickness, locking screw not detachable.</p> <p>2 or 3 contacts + protective earth (PE) contact</p> <p>Termination: Screw, solder</p>
	<p>Assessment levels: B and G (*)</p>

[SIST EN 175301-803:2002](https://standard.it/it/catalog/standards/sist/34062543-4fd3-4b8c-aba2-5ec7c767c6e1/sist-en-175301-803-2002)

Climatic category: <https://standard.it/it/catalog/standards/sist/34062543-4fd3-4b8c-aba2-5ec7c767c6e1/sist-en-175301-803-2002> see 6.1

Electrical characteristics: see 6.2

Mechanical characteristics: see 6.3

Ordering information: see 9

(*) see 7 and 8

Information about manufacturers who have components qualified to this detail specification is available in the current CECC 00 200: (Register of Firms, Products and Services Approved under the CECC System).

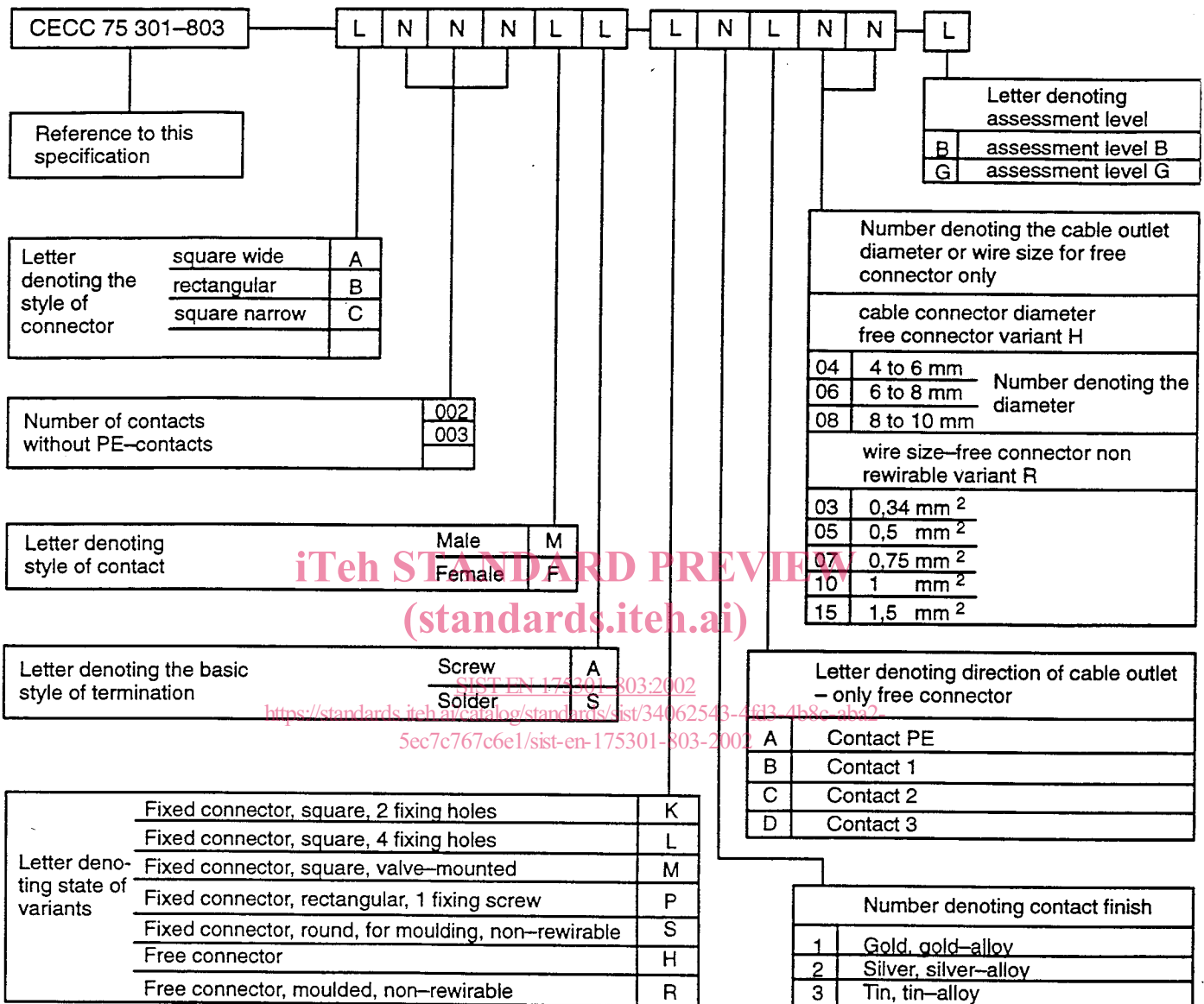
2 Related documents

The following documents contain provisions which, through reference in this text, constitute provisions of this specification. At the time of publication, the editions indicated were valid. All standards are subject to revision, and parties to agreements based on this specification are encouraged to investigate the possibility of applying the most recent editions of the documents indicated below. Members of IEC and ISO maintain registers of currently valid International Standards.

pr EN 2591	(1992): Aerospace series; elements of electrical and optical connection; test methods; general
EN 175 300	(1992): (CECC 75 300, Issue 1, 1989) Rectangular connectors
IEC 60068-1	(1988): Environmental testing Part 1: General and guidance
IEC 60410	(1973): Sampling plans and procedures for inspections by attributes
IEC 60417	(1973): Graphical symbols for use on equipment. Index, survey and compilation of the single sheets
IEC 60512-1	(1984): Electromechanical components for electronic equipment; basic testing procedures and measuring methods Part 1: General Amendment No. 1 (1988)
IEC 60512-2	(1985): Part 2: General examination, electrical continuity and contact resistance tests, insulation tests and voltage stress tests
IEC 60512-3	(1976): Part 3: Current-carrying capacity tests
IEC 60512-5	(1992): Part 5: Impact tests (free components), static load tests (fixed components), endurance tests and overload tests
IEC 60512-7	(1993): Part 7: Mechanical operating tests and sealing tests
IEC 60512-8	(1984): Part 8: Connector tests (mechanical) and mechanical tests on contacts and terminations, Amendment No. 1 (1985)
IEC 60512-9	(1992): Part 9: Miscellaneous tests
IEC 60529	(1989): Degrees of protection provided by enclosures (IP code)
IEC 60664-1	(1992): Insulation co-ordination for equipment within low-voltage systems Part 1: Principles, requirements and tests
IEC 60760	(1989): Flat, quick-connect terminations, Amendment No. 1 (1993)
IEC 60999	(1993): Connection devices – Safety requirements for screw-type and screwless-type clamping units for electrical copper conductors
ISO 468	(1982): Surface roughness. Parameters, their values and general rules for specifying requirements
ISO 1043-1	(1990): Plastics; Symbols; Part 1: Basic polymers and their special characteristics
ISO 1043-2	(1990): Plastics; Symbols; Part 2: fillers and reinforcing materials
ISO 4400	(1994): Fluid power systems and components – Three-pin electrical plug connectors with earth contact – Characteristics and requirements
ISO 6743-4	(1982): Lubricants, industrial oils and related products (class L) Classification; Part 4: Family H (Hydraulic systems)
ISO 6952	(1994): Fluid power systems and components – Two-pin electrical plug connectors with earth contact – Characteristics and requirements

3 Style designation

Connectors with assessment level according to this specification shall be designated by the following system:



Note: "L" stands for letter
"N" stands for number

Examples: Fixed connector style A, having 3 male contacts with tin-alloy contact finish with solder terminations. Variant M assessment level G:
CECC 75 301-803-A003MS-M3-G

Free connector style A, having 2 female contacts with silver-alloy contact finish with screw terminations. Variant H cable outlet on contact 3 (D) and cable outlet dia 6,5 and assessment level B:
CECC 75 301-803-A002FA-H2D08-B

4 Common features

4.1 Isometric view

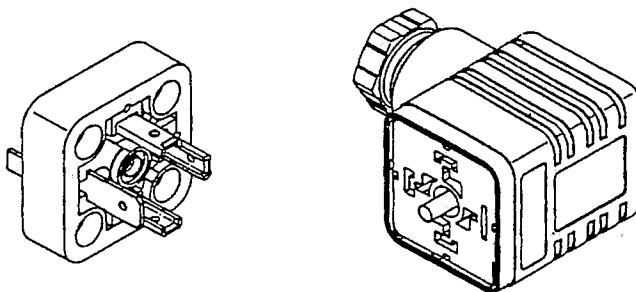


Figure 1 – Isometric view

4.2 Mating information

Arrow indicate mating direction

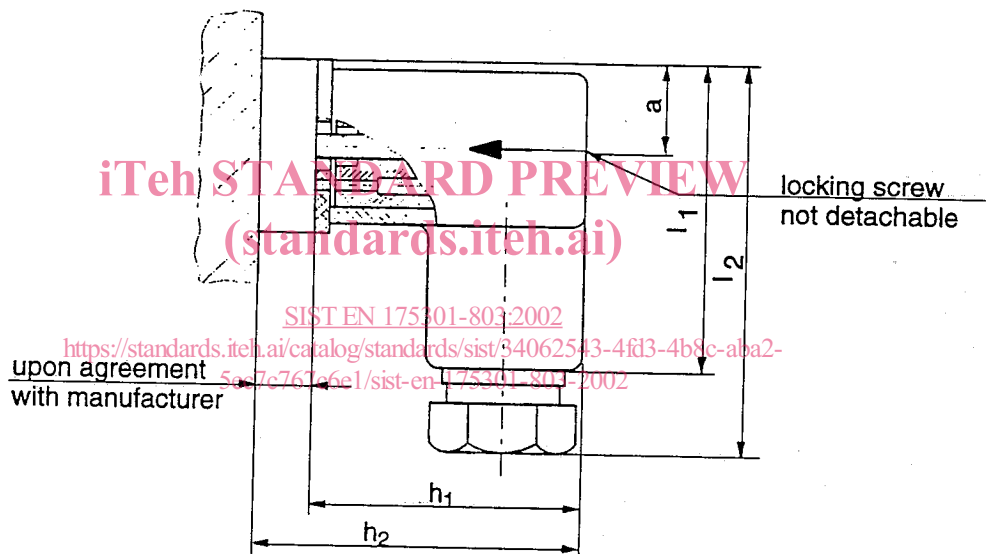


Figure 2

Table 1 – Mating dimensions of permissible styles

Style	Combination of variants	a max. (mm)	l ₁ max. (mm)	l ₂ max. (mm)	h ₁ max. (mm)	h ₂ max. (mm)
A	HF-KM	15	45	60	41,8	61,8
	HF-LM	15	45	60	41,8	61,8
	HF-MM	15	45	60	41,8	61,8
	HF-SM	15	45	60	41,8	61,8
B	HF-RM	14,75	45	60	42,3	62,3
C	HF-KM	8,5	34	44	27,7	47,7
	HF-SM	8,5	34	44	27,7	47,7

Note: 1) upon agreement between manufacturer and user

4.3 Survey of styles

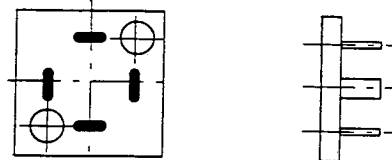
Number of contacts: 2 + PE; 3 + PE

Connector shape: Style A: square \square 28 mm, Style B: rectangular, Style C: square \square 16 mm

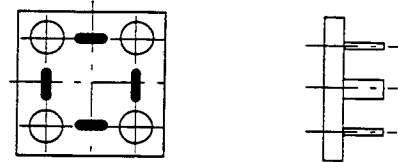
4.3.1 Survey of variants

4.3.1.1 Fixed connectors (male contacts)

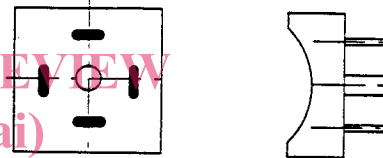
Variant K,
square, 2 fixing holes, front mounting



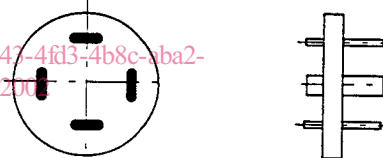
Variant L,
square, 4 fixing holes, front mounting



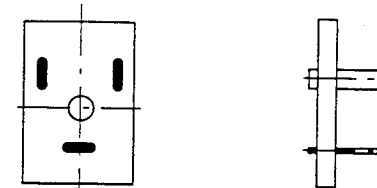
Variant M,
square, 1 fixing screw, front mounting



Variant S,
round, for potting, rear mounting (tube)

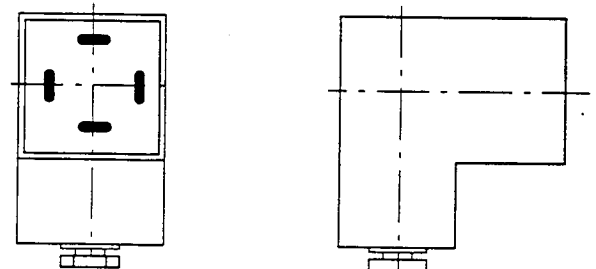


Variant P,
rectangular, 1 fixing screw

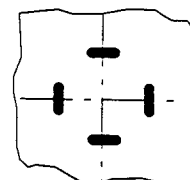


4.3.1.2 Free connectors (female contacts)

Variant H,
free connector



Variant R,
free connector, non-rewirable



5.2.1.1 Variant K, square, 2 fixing holes, front mounting

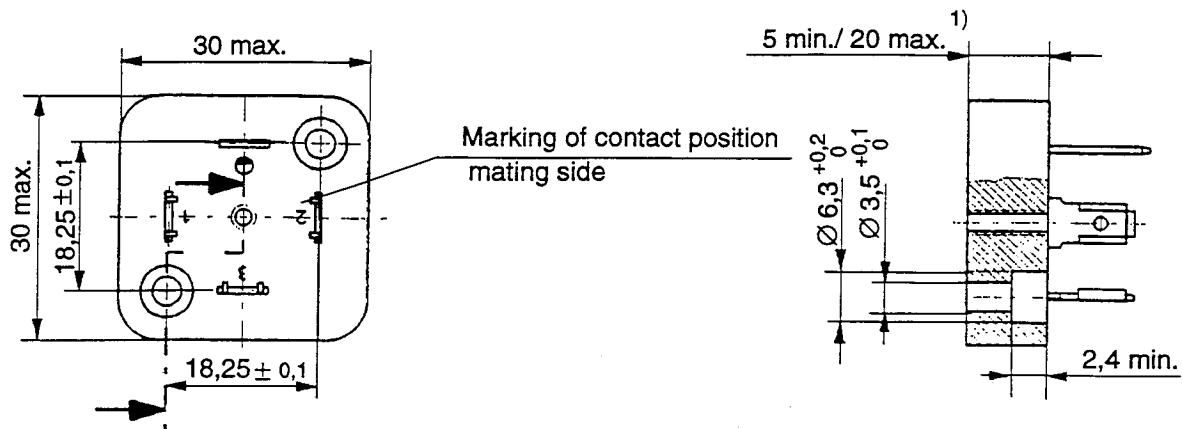


Figure 4 – Connector style A, variant K, square, 2 fixing holes

iTeh STANDARD PREVIEW

(standards.iteh.ai)

5.2.1.2 Variant L, square, 4 fixing holes, front mounting

SIST EN 175301-803:2002

<https://standards.iteh.ai/catalog/standards/sist/34062543-4fd3-4b8c-aba2-5ec7c767c6e1/sist-en-175301-803-2002>

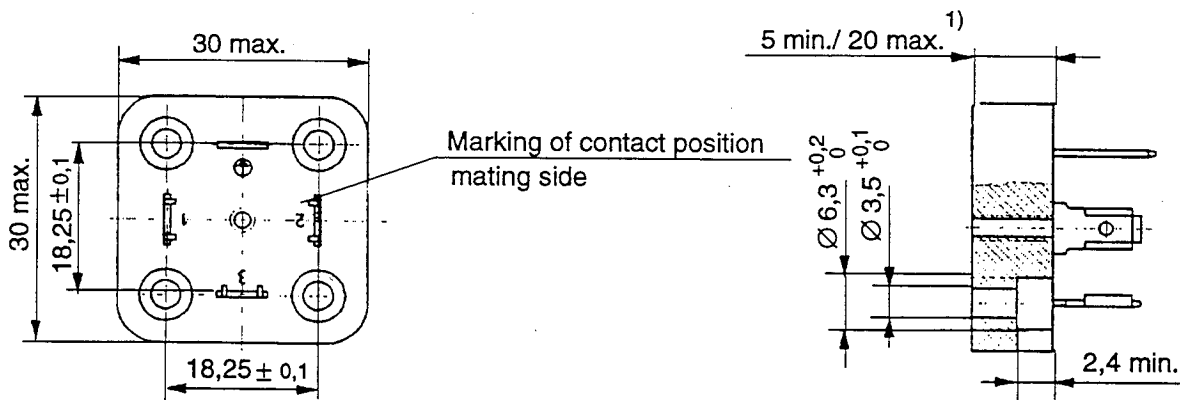


Figure 5 – Connector style A, variant L, square, 4 fixing holes

Note: 1) upon agreement between manufacturer and user

5.2.1.3 Variant M, square, valve-mounted, front mounting

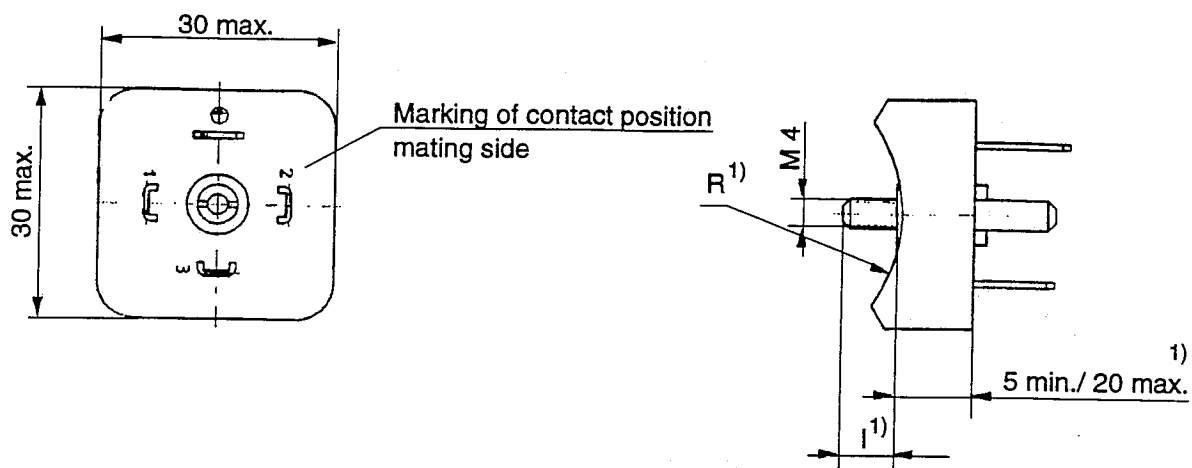


Figure 6 – Connector style A, variant M, square, 1 fixing hole

iTeh STANDARD PREVIEW

5.2.1.4 Variant S, round for potting, rear mounting (tube) solder termination

<https://standards.itih.ai/catalog/standards/sist/34062543-4fd3-4b8c-aba2-5ec7c767c6e1/sist-en-175301-803-2002>

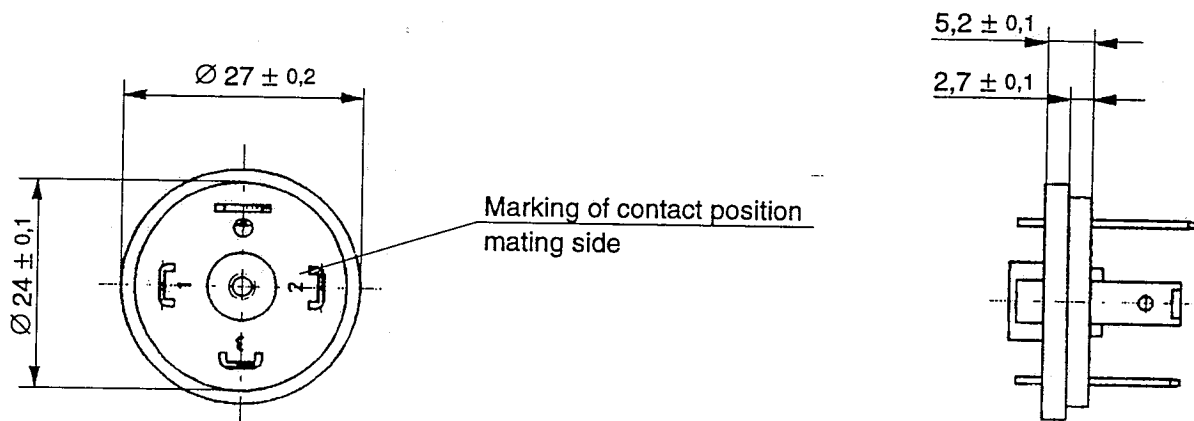


Figure 7 – Connector style A, variant S

Note: 1) upon agreement between manufacturer and user