

SLOVENSKI STANDARD

SIST EN 23964:2000

01-januar-2000

Dentistry - Dental handpieces - Coupling dimensions (ISO 3964:1982)

Dentistry - Dental handpieces - Coupling dimensions (ISO 3964:1982)

Zahnheilkunde - Zahnärztliche Handstücke - Anschlußmaße (ISO 3964:1982)

Art dentaire - Pieces a main dentaires - Dimensions d'accouplement (ISO 3964:1982)

Ta slovenski standard je istoveten z: EN 23964:1989

[SIST EN 23964:2000](https://standards.iteh.ai/catalog/standards/sist/08145210-2fd1-47ed-8a18-ade144ce2d50/sist-en-23964-2000)

<https://standards.iteh.ai/catalog/standards/sist/08145210-2fd1-47ed-8a18-ade144ce2d50/sist-en-23964-2000>

ICS:

11.060.20 Z[à [¢ @ ã } æ] ! ^ { æ Dental equipment

SIST EN 23964:2000

en

iTeh STANDARD PREVIEW
(standards.iteh.ai)

SIST EN 23964:2000

<https://standards.iteh.ai/catalog/standards/sist/08145210-2fdf-47ed-8a18-ade44ce2d50/sist-en-23964-2000>

EUROPEAN STANDARD

EN 23 964

NORME EUROPEENNE

EUROPAISCHE NORM

May 1989

UDC 615.47:616.314:621.313.13:621.643.415

Key words: Dentistry, dental equipment, hand tools, dimensions, couplings, dimensional tolerances

English version

**Dentistry; Dental handpieces; Coupling dimensions
(ISO 3964:1982)**

Art dentaire; Pièces à main dentaires;	Zahnheilkunde; Zahnärztliche
Dimensions d'accouplement	Handstücke; Anschlussmasse
(ISO 3964:1982)	(ISO 3964:1982)

This European Standard was accepted by CEN on 1989-01-31 and is identical to the ISO standard as referred to.
CEN members are bound to comply with the requirements of the CEN/CENELEC Common Rules which stipulate the conditions for giving this European Standard the status of a national standard without any alteration.

Up-to-date lists and bibliographical references concerning such national standards may be obtained on application to the CEN Central Secretariat or to any CEN member.

This European Standard exists in three official versions (English, French, German). A version in any other language may be translation under the responsibility of a CEN member into its own language and notified to CEN Central Secretariat has the same status as the official versions.

CEN members are the national standards organizations of Austria, Belgium, Denmark, Finland, France, Germany, Greece, Iceland, Ireland, Italy, Luxemburg, Netherlands, Norway, Portugal, Spain, Sweden, Switzerland and United Kingdom.

CEN

European Committee for Standardization
Comité Européen de Normalisation
Europäisches Komitee für Normung

Central Secretariat: rue Bréderode 2, B-1000 Brussels

(c) CEN 1989 Copyright reserved to all CEN members

Ref. No. EN 23 964:1989 E

adef44ce2d50/sist-en-23964-2000

International Standard



3964

INTERNATIONAL ORGANIZATION FOR STANDARDIZATION • МЕЖДУНАРОДНАЯ ОРГАНИЗАЦИЯ ПО СТАНДАРТИЗАЦИИ • ORGANISATION INTERNATIONALE DE NORMALISATION

Dental handpieces — Coupling dimensions

Pièces à main dentaires — Dimensions d'accouplement

Second edition — 1982-12-01

iTeh STANDARD PREVIEW
(standards.iteh.ai)

[SIST EN 23964:2000](https://standards.iteh.ai/catalog/standards/sist/08145210-2fdf-47ed-8a18-adeef44ce2d50/sist-en-23964-2000)

<https://standards.iteh.ai/catalog/standards/sist/08145210-2fdf-47ed-8a18-adeef44ce2d50/sist-en-23964-2000>

UDC 615.471 : 616.314-7

Ref. No. ISO 3964-1982 (E)

Descriptors : dental equipment, couplings, dimensions, dimensional tolerances.

Price based on 2 pages

Foreword

ISO (the International Organization for Standardization) is a worldwide federation of national standards institutes (ISO member bodies). The work of developing International Standards is carried out through ISO technical committees. Every member body interested in a subject for which a technical committee has been set up has the right to be represented on that committee. International organizations, governmental and non-governmental, in liaison with ISO, also take part in the work.

Draft International Standards adopted by the technical committees are circulated to the member bodies for approval before their acceptance as International Standards by the ISO Council.

International Standard ISO 3964 was developed by Technical Committee ISO/TC 106, *Dentistry*, and was circulated to the member bodies in March 1981.

It has been approved by the member bodies of the following countries :

Australia	India	South Africa, Rep. of
Austria	Ireland	Sweden
Canada	Japan	Switzerland
Czechoslovakia	Netherlands	United Kingdom
Egypt, Arab Rep. of	New Zealand	USA
France	Poland	USSR
Germany, F. R.	Romania	

No member body expressed disapproval of the document.

This second edition cancels and replaces the first edition (i.e. ISO 3964-1977).

Dental handpieces — Coupling dimensions

0 Introduction

The dental handpiece is an instrument used daily by dental practitioners throughout the world. To permit the interchange of instruments from various manufacturing sources in different countries, agreement on the dimensions for the coupling units is necessary, otherwise major practical problems could arise in the use of these precision instruments.

1 Scope and field of application

This International Standard specifies the nominal dimensions and tolerances of the swivel-type coupling used between the dental handpieces and their driving mechanisms. It is not applicable to the older "slip-joint" coupling. It is restricted to mechanically coupled handpieces of the slow or medium speed types.

2 Nominal dimensions and tolerances

See figures 1 and 2.

iTeh STANDARD PREVIEW

(standard 7* 3min 1,2+0.05
-0.02)

Dimensions in millimetres

* Alternative configuration in detail Z.

Alternative designs of the lock are permitted.

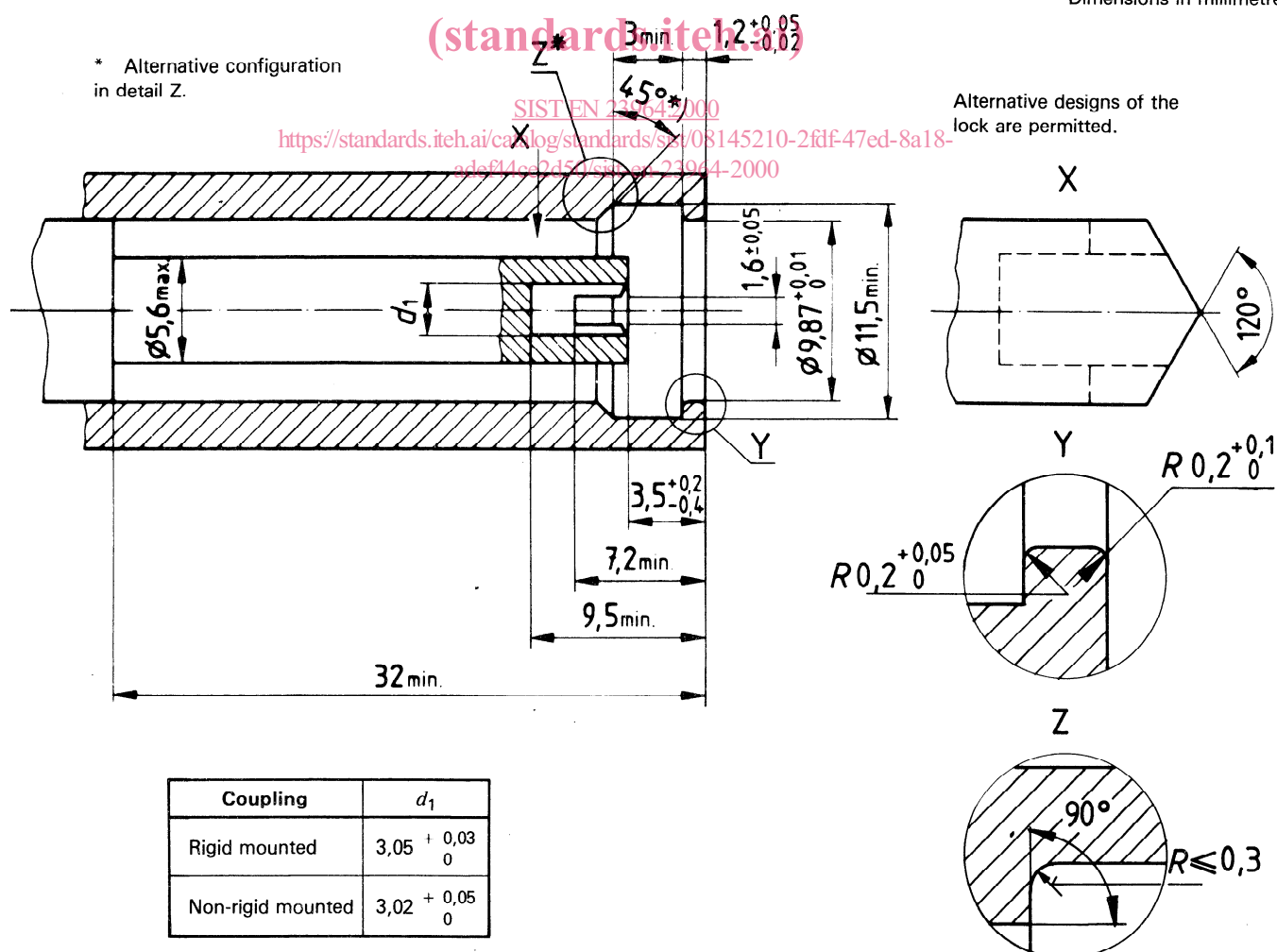
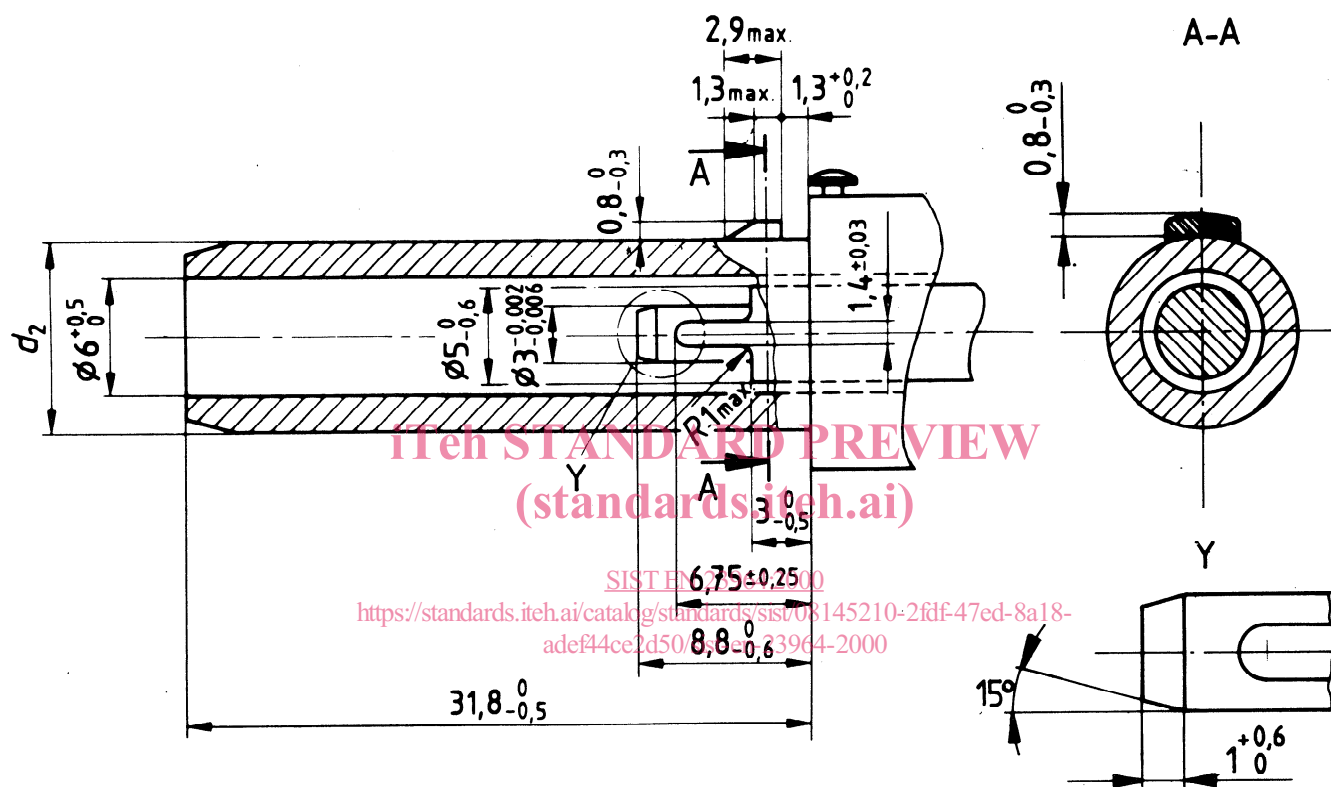


Figure 1 — Instrument

Dimensions in millimetres



Shaft for rotational frequency of the instrument	d_2
$> 25\,000\text{ r/min}$	$9,86 \begin{smallmatrix} 0 \\ -0,01 \end{smallmatrix}$
$\leq 25\,000\text{ r/min}$	$9,86 \begin{smallmatrix} 0 \\ -0,02 \end{smallmatrix}$

Figure 2 — Motor