



SLOVENSKI STANDARD
SIST EN 13461:2002
01-januar-2002

9a VUÜjU!JU UghYi dc[]VbYjY g`c`bY`hi VY!`AYfY]b`lc`YfUbW

Packaging - Cylindrical flexible laminated tubes - Dimensions and tolerances

Packmittel - Zylindrische Laminattuben - Maße und Toleranzen

Emballage - Tubes souples laminés cylindriques - Dimensions et tolérances

Ta slovenski standard je istoveten z: EN 13461:2001

[SIST EN 13461:2002](https://standards.iteh.ai/catalog/standards/sist/8aedefa4-f92-4d6a-9c80-1e0721253470/sist-en-13461-2002)

<https://standards.iteh.ai/catalog/standards/sist/8aedefa4-f92-4d6a-9c80-1e0721253470/sist-en-13461-2002>

ICS:

55.120

Ú[[^çã \ ^ĚV~ à^

Cans. Tins. Tubes

SIST EN 13461:2002

en

iTeh STANDARD PREVIEW
(standards.iteh.ai)

SIST EN 13461:2002

<https://standards.iteh.ai/catalog/standards/sist/8aedfa4-f92-4d6a-9c80-1e0721253470/sist-en-13461-2002>

EUROPEAN STANDARD
NORME EUROPÉENNE
EUROPÄISCHE NORM

EN 13461

January 2001

ICS 55.120

English version

Packaging - Cylindrical flexible laminated tubes - Dimensions and tolerances

Emballage - Tubes souples laminés cylindriques -
Dimensions et tolérances

Packmittel - Zylindrische Laminattuben - Maße und
Toleranzen

This European Standard was approved by CEN on 1 December 2000.

CEN members are bound to comply with the CEN/CENELEC Internal Regulations which stipulate the conditions for giving this European Standard the status of a national standard without any alteration. Up-to-date lists and bibliographical references concerning such national standards may be obtained on application to the Management Centre or to any CEN member.

This European Standard exists in three official versions (English, French, German). A version in any other language made by translation under the responsibility of a CEN member into its own language and notified to the Management Centre has the same status as the official versions.

CEN members are the national standards bodies of Austria, Belgium, Czech Republic, Denmark, Finland, France, Germany, Greece, Iceland, Ireland, Italy, Luxembourg, Netherlands, Norway, Portugal, Spain, Sweden, Switzerland and United Kingdom.

[SIST EN 13461:2002](https://standards.iteh.ai/catalog/standards/sist/8aedfa4-f92-4d6a-9c80-1e0721253470/sist-en-13461-2002)

<https://standards.iteh.ai/catalog/standards/sist/8aedfa4-f92-4d6a-9c80-1e0721253470/sist-en-13461-2002>



EUROPEAN COMMITTEE FOR STANDARDIZATION
COMITÉ EUROPÉEN DE NORMALISATION
EUROPÄISCHES KOMITEE FÜR NORMUNG

Management Centre: rue de Stassart, 36 B-1050 Brussels

Contents

Foreword.....	3
1 Scope	4
2 Terms and definitions.....	4
3 Dimensions.....	5
Annex A (informative) Complementary characteristics.....	6
Bibliography	7

iTeh STANDARD PREVIEW (standards.iteh.ai)

SIST EN 13461:2002

<https://standards.iteh.ai/catalog/standards/sist/8aedefa4-f92-4d6a-9c80-1e0721253470/sist-en-13461-2002>

Foreword

This European Standard has been prepared by Technical Committee CEN/TC 261 "Packaging", the secretariat of which is held by AFNOR.

This European Standard shall be given the status of a national standard, either by publication of an identical text or by endorsement, at the latest by July 2001, and conflicting national standards shall be withdrawn at the latest by July 2001.

It is based on the professional recommendations of the European Tube Association (ETA).

According to the CEN/CENELEC Internal Regulations, the national standards organizations of the following countries are bound to implement this European Standard: Austria, Belgium, Czech Republic, Denmark, Finland, France, Germany, Greece, Iceland, Ireland, Italy, Luxembourg, Netherlands, Norway, Portugal, Spain, Sweden, Switzerland and the United Kingdom.

iTeh STANDARD PREVIEW (standards.iteh.ai)

SIST EN 13461:2002

<https://standards.iteh.ai/catalog/standards/sist/8aedefa4-f92-4d6a-9c80-1e0721253470/sist-en-13461-2002>

1 Scope

This standard specifies sizes and geometric characteristics for cylindrical laminated flexible tubes which are produced by directly welding laminate materials.

It applies to tubes used for packaging pharmaceutical, cosmetic and hygiene products, as well as for packaging food, industrial and domestic products.

This standard does not contain requirements for materials but Annex A (informative) refers.

2 Terms and definitions

For the purposes of this standard, the following terms and definitions apply (see Figure 1).

2.1

nominal diameter, D

conventional indication utilized for the commercial description of the tube, which corresponds approximately to the outside diameter d_1 of the body of the tube

2.2

nominal length, L

conventional indication utilized for the commercial description of the tube, corresponding approximately to the length l_1 , measured between the shoulder and the opened end of the tube

2.3

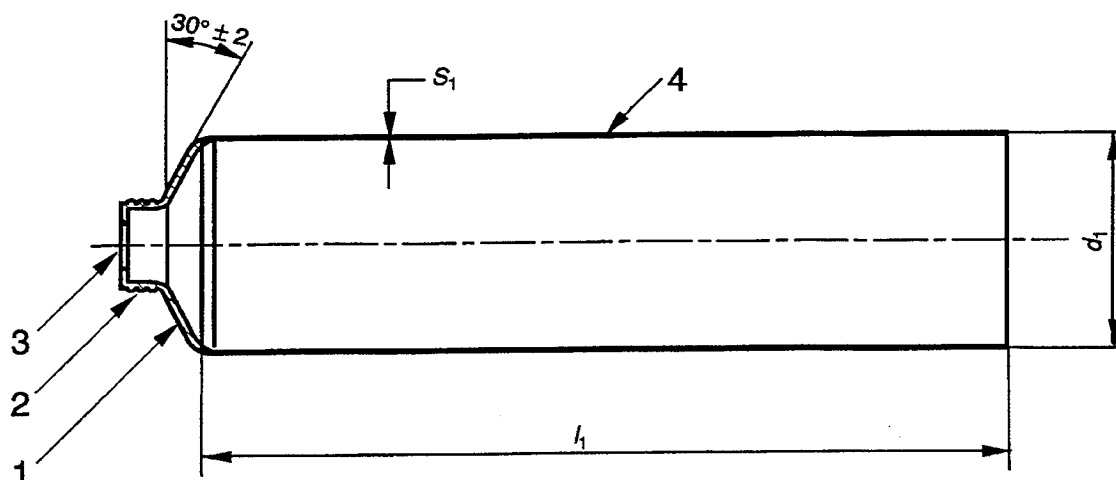
ovality diameter, d_2

diameter of the largest circle which can enclose the tube at any point along the body of the tube

2.4

wall thickness, S_1

thickness of the body wall of the tube

**Key**

- 1 Shoulder
3 Orifice

- 2 Nozzle
4 Body (Tube sleeve)

Figure 1 — Dimensions**3 Dimensions** iTeh STANDARD PREVIEW

The dimensions of the tubes shall conform to Table 1. (standards.iteh.ai)

Table 1 — Dimensions

Nominal diameter D mm	Actual outside diameter d_1 mm	Nominal length L^a mm	Maximum ovality diameter d_2 mm	Wall thickness S_1 μm
13,5	13,3 to 14	65 to 110	15,5	250 to 350
16	15,8 to 16,5	65 to 120	18	250 to 350
19	18,8 to 19,5	75 to 130	21	250 to 350
22	21,8 to 22,5	90 to 150	24,5	250 to 350
25	24,8 to 25,5	100 to 160	27,5	250 to 350
28	27,8 to 28,5	100 to 185	31	250 to 350
30	29,8 to 30,5	120 to 195	33	250 to 350
32	31,8 to 32,5	120 to 200	35,5	250 to 350
35	34,8 to 35,5	120 to 200	38,5	250 to 350
40	39,8 to 40,5	120 to 200	44	250 to 350

^a Tolerance: $l_1 = L \pm 1,5$

where

l_1 is the actual length (see Figure 1), in millimetres

Annex A (informative)

Complementary characteristics

A.1 Materials

Considering the specific and evolutionary aspect of the technology of the laminate, material properties are subject to an agreement between the customer and supplier.

A.1.1 Characteristics

The following characteristics should be specified as a minimum:

- a) barrier properties;
- b) welding and sealing properties;
- c) printability.

A.2 Finishes

iTeh STANDARD PREVIEW
(standards.iteh.ai)

The following decorative finishes are available:

- a) printing; [SIST EN 13461:2002
https://standards.iteh.ai/catalog/standards/sist/8aedfa4-fb92-4d6a-9c80-1e0721253470/sist-en-13461-2002](https://standards.iteh.ai/catalog/standards/sist/8aedfa4-fb92-4d6a-9c80-1e0721253470/sist-en-13461-2002)
- b) lacquering;
- c) foil blocking;
- d) tactile warnings of danger (see EN ISO 11683).