
International Standard



7006

INTERNATIONAL ORGANIZATION FOR STANDARDIZATION • МЕЖДУНАРОДНАЯ ОРГАНИЗАЦИЯ ПО СТАНДАРТИЗАЦИИ • ORGANISATION INTERNATIONALE DE NORMALISATION

Woodworking machines — Diameters of spindles for receiving circular sawblades

Machines à bois — Diamètres des broches portant des lames de scies circulaires

First edition — 1981-07-15

ITeH STANDARD PREVIEW
(standards.iteh.ai)

ISO 7006:1981

<https://standards.iteh.ai/catalog/standards/sist/a01694ec-1336-4229-b319-d7a8089a5244/iso-7006-1981>



UDC 674.053 : 621.934

Ref. No. ISO 7006-1981 (E)

Descriptors : machine tools, woodworking machinery, machine elements, spindles, diameters.

Foreword

ISO (the International Organization for Standardization) is a worldwide federation of national standards institutes (ISO member bodies). The work of developing International Standards is carried out through ISO technical committees. Every member body interested in a subject for which a technical committee has been set up has the right to be represented on that committee. International organizations, governmental and non-governmental, in liaison with ISO, also take part in the work.

Draft International Standards adopted by the technical committees are circulated to the member bodies for approval before their acceptance as International Standards by the ISO Council.

International Standard ISO 7006 was developed by Technical Committee ISO/TC 39, *Machine tools*, and was circulated to the member bodies in June 1980.

It has been approved by the member bodies of the following countries :

Belgium	Hungary	Romania
Bulgaria	India	South Africa, Rep. of
Chile	Italy	Spain
Czechoslovakia	Japan	Sweden
France	Korea, Rep. of	United Kingdom
Germany, F. R.	Poland	

No member body expressed disapproval of the document.

Woodworking machines — Diameters of spindles for receiving circular sawblades

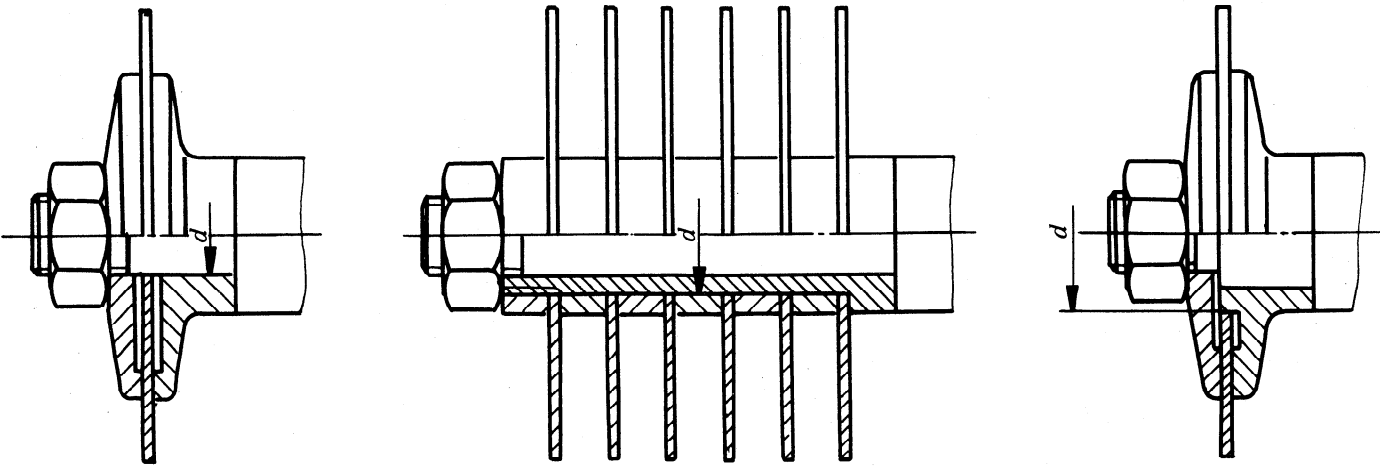
iTeh STANDARD PREVIEW
(standards.iteh.ai)

1 Scope and field of application

This International Standard lays down the diameters of the spindles receiving circular sawblades for wood.

2 Diameters of the spindles

The diameters given in the table conform to the dimensions specified in ISO 2935, *Circular sawblades for woodworking — Dimensions*.



Dimensions in millimetres

ϕ d, tolerance g6					
12,5	20	30	40	60	85

iTeh STANDARD PREVIEW

(standards.iteh.ai)

This page intentionally left blank

ISO 7006:1981

<https://standards.iteh.ai/catalog/standards/sist/a01694ec-1336-4229-b319-d7a8089a5244/iso-7006-1981>