

INTERNATIONAL  
STANDARD

**ISO**  
**7310**

Second edition  
1993-07-15

---

---

**Diesel engines — Heads for spin-on fuel  
filters with horizontal flange — Mounting  
and connecting dimensions**

**iTeh STANDARD PREVIEW**

*Moteurs diesels — Têtes pour filtres à combustible vissés à bride  
horizontale — Dimensions de montage et de raccordement*

ISO 7310:1993

[https://standards.iteh.ai/catalog/standards/sist/91618119-eb70-408d-  
b935-060b1000e517/iso-7310-1993](https://standards.iteh.ai/catalog/standards/sist/91618119-eb70-408d-b935-060b1000e517/iso-7310-1993)



Reference number  
ISO 7310:1993(E)

## Foreword

ISO (the International Organization for Standardization) is a worldwide federation of national standards bodies (ISO member bodies). The work of preparing International Standards is normally carried out through ISO technical committees. Each member body interested in a subject for which a technical committee has been established has the right to be represented on that committee. International organizations, governmental and non-governmental, in liaison with ISO, also take part in the work. ISO collaborates closely with the International Electrotechnical Commission (IEC) on all matters of electrotechnical standardization.

Draft International Standards adopted by the technical committees are circulated to the member bodies for voting. Publication as an International Standard requires approval by at least 75 % of the member bodies casting a vote.

International Standard ISO 7310 was prepared by Technical Committee ISO/TC 22, *Road vehicles*, Sub-Committee SC 7, *Injection equipment and filters for use on road vehicles*.  
<https://standards.iteh.ai/catalog/standards/sist/91618119-eb70-408d-b935-060b1000e517/iso-7310-1993>

This second edition cancels and replaces the first edition (ISO 7310:1984), of which it constitutes a technical revision.

Annex A of this International Standard is for information only.

© ISO 1993

All rights reserved. No part of this publication may be reproduced or utilized in any form or by any means, electronic or mechanical, including photocopying and microfilm, without permission in writing from the publisher.

International Organization for Standardization  
Case Postale 56 • CH-1211 Genève 20 • Switzerland

Printed in Switzerland

# Diesel engines — Heads for spin-on fuel filters with horizontal flange — Mounting and connecting dimensions

## 1 Scope

This International Standard specifies the mounting and connecting dimensions for heads for spin-on fuel filters for diesel (compression-ignition) engines.

It applies to spin-on fuel filters according to ISO 7654 having a canister outside diameter of up to 80 mm. In special cases, canisters with an outside diameter of up to 88 mm may be mounted to these heads.

## 2 Normative reference

The following standard contains provisions which, through reference in this text, constitute provisions of this International Standard. At the time of publication, the edition indicated was valid. All standards are subject to revision, and parties to agreements based on this International Standard are encouraged to investigate the possibility of applying the most recent edition of the standard indicated below. Members of IEC and ISO maintain registers of currently valid International Standards.

ISO 7654:1991, *Road vehicles — Spin-on fuel filters for compression-ignition engines — Mounting and connecting dimensions.*

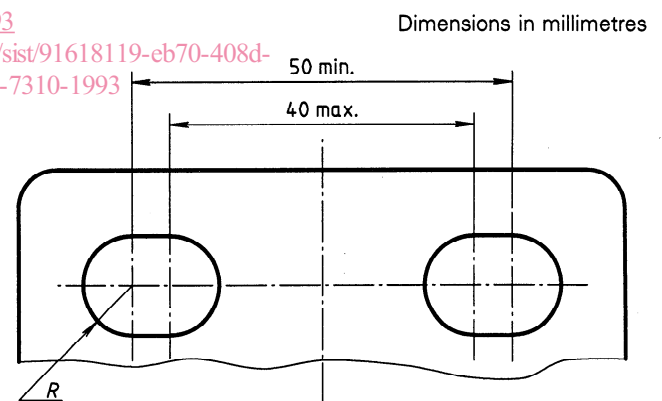
## 3 Dimensions and tolerances

NOTE 1 The current thread size for fitment of spin-on filters is M16 × 1,5.

### 3.1 Fixing bolt holes of flanges for single and double filters

See figure 1.

NOTE 2 Engine manufacturers are encouraged in future to apply a centre-to-centre distance of fixing holes or fixing bolts of  $45 \text{ mm} \pm 0,5 \text{ mm}$ .



Type	$R \pm 0,2$	
For single filters	5,3	6,5
For double filters	6,5	

Figure 1

### 3.2 Filter inlet and outlet ports

#### 3.2.1 For outside sealing

See figure 2.

NOTE 3 Vent threads and overflow valves are left to the manufacturer's choice.

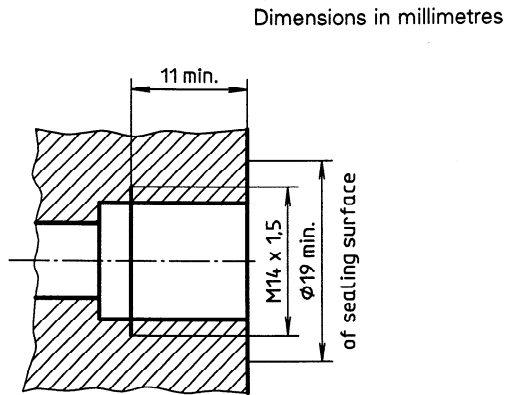
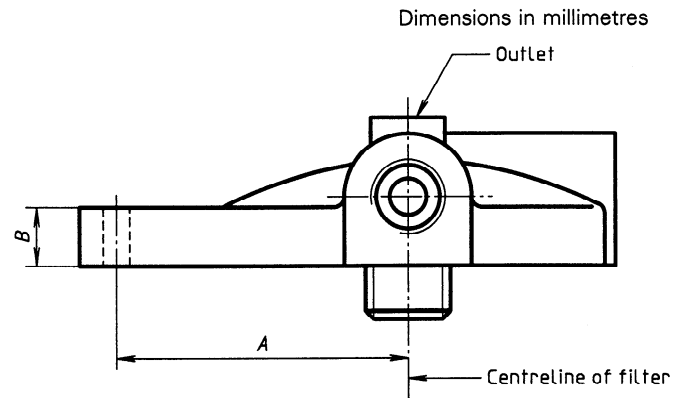


Figure 2

### 3.3 Positioning of inlet and outlet ports relative to centreline of fixing bolt holes of flange

#### 3.3.1 Single filters with vertical outlet and three horizontal ports

See figure 4.



Dimension	
A	B
55 ± 0,5	11 ± 2
65 ± 1	11 ± 2

Figure 4

#### 3.2.2 For internal sealing

See figure 3.

NOTE 4 Vent threads and overflow valves are left to the manufacturer's choice.

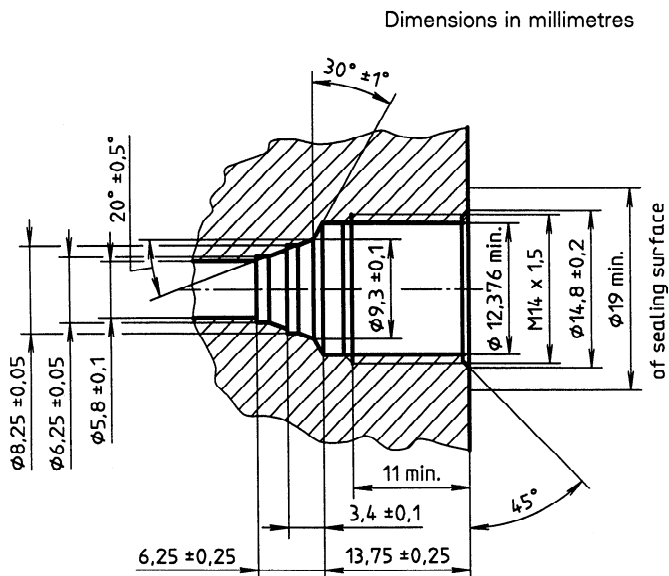


Figure 3

#### 3.3.2 Double filters with two horizontal ports

See figure 5.

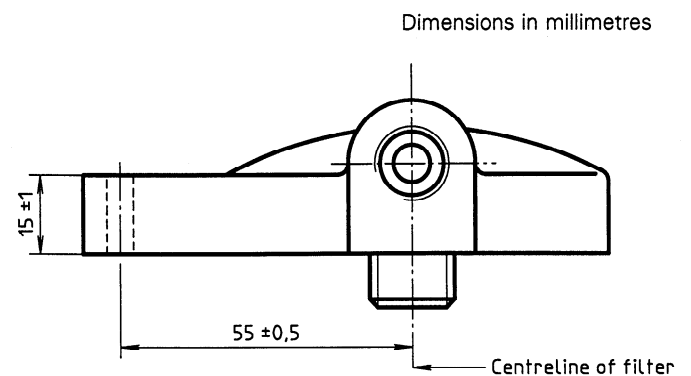
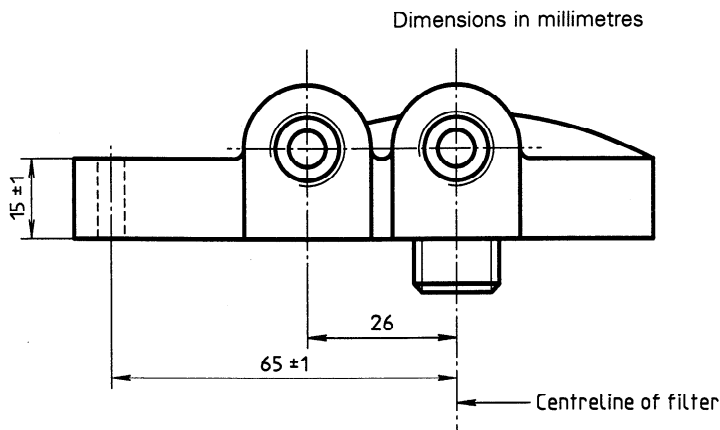


Figure 5

**3.3.3 Double filters with four horizontal ports**

See figure 6.

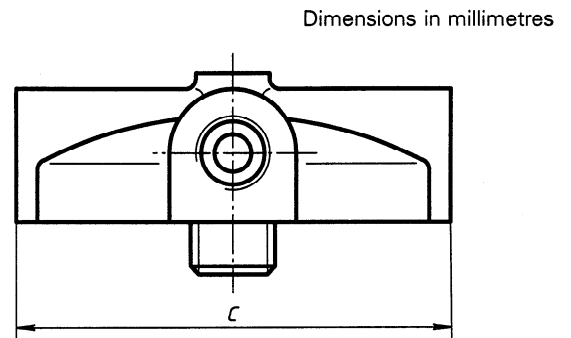


**Figure 6**

**3.4 Overall dimensions between sealing surfaces of horizontal ports**

**3.4.1 Single filters**

See figure 7.



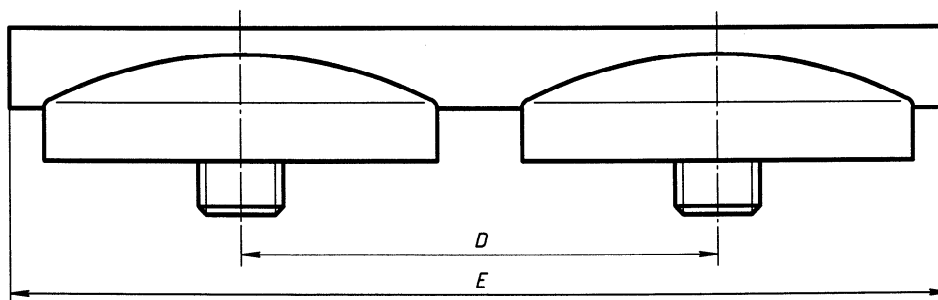
Dimension C
92 ± 3
105 ± 3

**Figure 7**

**iTeh STANDARD PREVIEW**  
(standards.iteh.ai)

ISO 7310:1993  
<https://standards.iteh.ai/catalog/standards/sis/91618119-cb70-408d-b935-060b1000e517/iso-7310-1993>  
**3.4.2 Double filters**  
See figure 8.

Dimensions in millimetres



Dimension	
D	E
90 ± 1	177 ± 1
97 ± 3	190 <sup>+5</sup> / <sub>-2</sub>

**Figure 8**

**Annex A**  
(informative)

**Bibliography**

- [1] ISO 7311:1993, *Diesel engines — Heads for fuel filters with vertical flange — Mounting and connecting dimensions.*
- [2] ISO 7576:1990, *Road vehicles — Two-stage fuel filters for compression-ignition engines — Mounting and connecting dimensions.*
- [3] ISO 7577:1982, *Road vehicles — Heads for fuel filters with vertical flange and three bolt fixing for compression ignition engines — Mounting and connecting dimensions.*
- [4] ISO 7774:1984, *Road vehicles — Compression ignition engines — Single fuel filters with horizontal flange and centre bolt fixing — Mounting and connecting dimensions.*

**iTeh STANDARD PREVIEW**  
**(standards.iteh.ai)**

[ISO 7310:1993](#)

<https://standards.iteh.ai/catalog/standards/sist/91618119-eb70-408d-b935-060b1000e517/iso-7310-1993>

**iTeh STANDARD PREVIEW**  
**(standards.iteh.ai)**

**This page intentionally left blank**

[ISO 7310:1993](#)

<https://standards.iteh.ai/catalog/standards/sist/91618119-eb70-408d-b935-060b1000e517/iso-7310-1993>

**iTeh STANDARD PREVIEW**  
**(standards.iteh.ai)**

ISO 7310:1993

<https://standards.iteh.ai/catalog/standards/sist/91618119-eb70-408d-b935-060b1000e517/iso-7310-1993>

---

---

**UDC 621.43.038.772**

**Descriptors:** road vehicles, internal combustion engines, diesel engines, fuel filters, dimensions, mounting dimensions, connecting dimensions, dimensional tolerances.

Price based on 4 pages

---

---