



SLOVENSKI STANDARD
SIST EN 12063:2002

01-julij-2002

izvajanje specialnih geotehniških del - Spundwandbau

Execution of special geotechnical work - Sheet-pile walls

Ausführung von besonderen geotechnischen Arbeiten - Spezialtiefbau - Spundwandkonstruktionen

Exécution de travaux géotechniques spéciaux - Rideaux de palplanches

iteh STANDARD PREVIEW
(standards.iteh.ai)

Ta slovenski standard je istoveten z: EN 12063:1999

<https://standards.iteh.ai/catalog/standards/sist/8cc235ca-42f1-4742-9a3a-4d4847e5072d/sist-en-12063-2002>

ICS:

93.020	Zemeljska dela. Izkopavanja.	Earthworks. Excavations.
	Gradnja temeljev. Dela pod zemljo	Foundation construction. Underground works

SIST EN 12063:2002

en

iTeh STANDARD PREVIEW
(standards.iteh.ai)

SIST EN 12063:2002

<https://standards.iteh.ai/catalog/standards/sist/8cc235ca-42f1-4742-9a3a-4d4847e5072d/sist-en-12063-2002>

EUROPEAN STANDARD

EN 12063

NORME EUROPÉENNE

EUROPÄISCHE NORM

February 1999

ICS 93.020

Descriptors: soils, construction, structures, sheet pilings, definitions, informations, wood, steels, welding, design, setting-up conditions, thrust boring, anchorages, tests, inspection

English version

Execution of special geotechnical work - Sheet-pile walls

Exécution de travaux géotechniques spéciaux - Rideaux de palplanches

Ausführung von besonderen geotechnischen Arbeiten - (Spezialtiefbau) - Spundwandkonstruktionen

This European Standard was approved by CEN on 9 January 1999.

CEN members are bound to comply with the CEN/CENELEC Internal Regulations which stipulate the conditions for giving this European Standard the status of a national standard without any alteration. Up-to-date lists and bibliographical references concerning such national standards may be obtained on application to the Central Secretariat or to any CEN member.

This European Standard exists in three official versions (English, French, German). A version in any other language made by translation under the responsibility of a CEN member into its own language and notified to the Central Secretariat has the same status as the official versions.

CEN members are the national standards bodies of Austria, Belgium, Czech Republic, Denmark, Finland, France, Germany, Greece, Iceland, Ireland, Italy, Luxembourg, Netherlands, Norway, Portugal, Spain, Sweden, Switzerland and United Kingdom.

iTeh STANDARD PREVIEW
(standards.iteh.ai)

[SIST EN 12063:2002](https://standards.iteh.ai/catalog/standards/sist/8c235ca-42f1-4742-9a3a-4d4847e5072c/sist-en-12063-2002)

<https://standards.iteh.ai/catalog/standards/sist/8c235ca-42f1-4742-9a3a-4d4847e5072c/sist-en-12063-2002>



EUROPEAN COMMITTEE FOR STANDARDIZATION
COMITÉ EUROPÉEN DE NORMALISATION
EUROPÄISCHES KOMITEE FÜR NORMUNG

Central Secretariat: rue de Stassart, 36 B-1050 Brussels

Contents

	Page
Foreword	4
1 Scope	5
2 Normative references	5
3 Definitions	6
4 Information needed for the execution of sheet pile walls	12
4.1 General.....	12
4.2 Specific.....	13
5 Site investigations	14
5.1 Soils and rock investigation.....	14
5.2 Driveability of sheet piles.....	14
6 Materials and products	14
6.1 Steel sheet piles.....	14
6.2 Timber sheet piles.....	14
6.3 Other materials and products.....	14
6.4 Corrosion protection for steel sheet piles and preservation of wooden sheet piles.....	14
6.5 Sealings for interlocks.....	14
7 Design considerations	15
7.1 General.....	15
7.2 Selection of sheet pile.....	15
7.3 Other structural elements.....	16
7.4 Sequence of execution.....	16
7.5 Specific design considerations.....	17
8 Execution of sheet pile wall structures	17
8.1 General.....	17
8.2 Site preparation.....	17
8.3 Storage and handling of the sheet piles.....	18
8.4 Welding and cutting of steel elements.....	18
8.5 Driving of the sheet piles.....	31
8.6 Tolerances regarding plan position and verticality.....	34
8.7 Corrections of sheet pile position during driving.....	35
8.8 Installation of anchorages.....	35
8.9 Walings and struts.....	35
8.10 Excavation, filling, drainage and de-watering.....	36
8.11 Extraction of sheet piles.....	36
8.12 Rock dowels and anchor bolts.....	37
8.13 Sealing.....	38
9 Supervision, Testing and Monitoring	39
9.1 Supervision.....	39
9.2 Testing.....	39
9.3 Monitoring.....	40
10 Site Records	40
10.1 Records in connection with the execution.....	40
10.2 Records at completion of the execution works.....	40
11 Special Requirements	41
11.1 Safety.....	41
11.2 Impact on the surrounding buildings and installations.....	41
11.3 Noise hindrance.....	41
11.4 Permeability of sheet pile walls.....	41
Annex A (informative) Handling and storage of sheet piles	42
Annex B (informative) Welding of sheet piles	50
Annex C (informative) Driving of sheet piles	61
Annex D (informative) Installation and driving assistance	63
Annex E (informative) Watertightness of interlock sealings	66

iTech STANDARD PREVIEW
(standards.itech.ai)

[SIST EN 12063:2002](https://standards.itech.ai/catalog/standards/sist/8cc235ca-42ff-4742-9a3a-4d4647c5072d/sist-en-12063-2002)

<https://standards.itech.ai/catalog/standards/sist/8cc235ca-42ff-4742-9a3a-4d4647c5072d/sist-en-12063-2002>

Annex F (informative) Timber sheet piles and walings	69
Annex G (informative) Bibliography	77

iTeh STANDARD PREVIEW
(standards.iteh.ai)

[SIST EN 12063:2002](#)

<https://standards.iteh.ai/catalog/standards/sist/8cc235ca-42f1-4742-9a3a-4d4847e5072d/sist-en-12063-2002>

Foreword

This European Standard has been prepared by Technical Committee CEN/TC 288 "Execution of special geotechnical works", the secretariat of which is held by AFNOR.

This European Standard shall be given the status of a national standard, either by publication of an identical text or by endorsement, at the latest by August 1999, and conflicting national standards shall be withdrawn at the latest by August 1999.

According to the CEN/CENELEC Internal Regulations, the national standards organizations of the following countries are bound to implement this European Standard: Austria, Belgium, Czech Republic, Denmark, Finland, France, Germany, Greece, Iceland, Ireland, Italy, Luxembourg, Netherlands, Norway, Portugal, Spain, Sweden, Switzerland and the United Kingdom.

The present standard expands on design only when necessary, but provides full coverage of the execution and supervision requirements for sheet pile wall structures.

It has been drafted on the basis of existing Codes of Practice and general available expertise which can be found in specialized literature.

iTeh STANDARD PREVIEW
(standards.iteh.ai)

[SIST EN 12063:2002](#)

<https://standards.iteh.ai/catalog/standards/sist/8cc235ca-42f1-4742-9a3a-4d4847e5072d/sist-en-12063-2002>

1 Scope

This Standard specifies requirements, recommendations and information concerning the execution of permanent or temporary sheet pile wall structures in accordance with 2.4 of ENV 1991-1:1994 and the handling of equipment and materials.

It does not give requirements and recommendations for the installation of specific parts of the structure such as ground anchorages and piles which are covered by other codes.

It applies only to steel sheet pile walls, combined walls and wooden sheet pile walls.

Composite structures such as Berliner walls and sheet pile walls in combination with shotcrete, are not the subject of this standard.

2 Normative references

This Standard incorporates by dated or undated reference, provisions from other publications. These normative references are cited at the appropriate places in the text and the publications are listed hereafter. For dated references, subsequent amendments to or revisions of any of these publications apply to this Standard only when incorporated in it by amendment or revision. For undated references the latest edition of the publication referred to applies.

EN 287-1:1992 + A1:1997, *Approval testing of welders - Fusion welding - Part 1 : Steels.*

EN 288-2:1992 + A1:1997, *Specification and approval of welding procedures for metallic materials - Part 2 : Welding procedures specification for arc welding.*

EN 288-3:1992 + A1:1997, *Specification and approval of welding procedures for metallic materials - Part 3 : Welding procedure tests for the arc welding of steels.*

EN 499:1994, *Welding consumables - Covered electrodes for manual metal arc welding of non alloy and fine grain steels – Classification.*

EN 996:1995, *Piling equipment - Safety requirements.*

prEN 1537, *Execution of special geotechnical work - Ground anchors.*

ENV 1991-1:1994, *Eurocode 1 : Basis of design and actions on structures - Part 1 : Basis of design.*

ENV 1992-1-1:1994, *Eurocode 2 : Design of concrete structures - Part 1-1 : General rules and rules and rules for buildings.*

ENV 1993-1-1;1994, *Eurocode 3 : Design of steel structures - Part 1-1 : General rules and rules for buildings.*

ENV 1993-5:1998, *Eurocode 3 : Design of steel structures - Part 5 : Piling.*

ENV 1997-1:1994, *Eurocode 7 : Geotechnical design - Part 1 : General rules.*

EN 10020:1988, *Definitions and classification of grades of steel.*

EN 10079:1992, *Definition of steel products.*

EN 10219-1:1997, *Cold formed structural welded hollow sections of non-alloy and fine grain steels - Part 1 : Technical delivery requirements.*

Page 6

EN 12063:1999

EN 10219-2:1997, *Cold formed welded structural hollow sections of non-alloy and fine grain steels - Part 2 : Tolerances, dimensions and sectional properties.*

EN 10248-1:1995, *Hot rolled sheet piling of non alloy steels - Part 1 : Technical delivery conditions.*

EN 10248-2:1995, *Hot rolled sheet piling of non alloy steels - Part 2 : Tolerances on shape and dimensions.*

EN 10249-1:1995, *Cold formed sheet piling of non alloy steels - Part 1 : Technical delivery conditions.*

EN 10249-2:1995, *Cold formed sheet piling of non alloy steels - Part 2 : Tolerances on shape and dimensions.*

EN 24063:1992, *Welding, brazing, braze welding and soldering of metals – Nomenclature of processes and reference number for symbolic representation on drawings. (ISO 4063:1990)*

EN 25817:1992, *Arc-welded joints in steel - Guidance on quality levels for imperfections. (ISO 5817:1992)*

EN 29692:1994, *Metal-arc welding with covered electrode, gas-shielded metal-arc welding and gas welding - Joint preparations for steel. (ISO 9692:1992)*

ISO 1106-1:1984, *Recommended practice for radiographic examination of fusion welded joints - Part 1 : Fusion welded butt joints in steel plates up to 50 mm thick.*

3 Definitions

For the purposes of this standard, the following definitions apply :

3.1

anchorage

anchoring system for the sheet pile wall, for example anchor plates or anchor walls including the connecting rods (tie rods), screw anchors, ground and rock anchors, driven ground anchors, anchoring piles and anchors with grouted or expanded bodies

3.2

auxiliary structures

all structures necessary for the proper and safe execution of the sheet piling works

3.3

bracing

a system of walings and struts to support the structure

3.4

combined wall

retaining wall composed of primary and secondary elements. The primary elements can be steel tubes, beams, or box piles. The secondary elements are normally U or Z-shaped steel sheet piles. Figure 1 shows examples of combined walls

3.5

comparable experience

<https://standards.itech.ai/catalog/standards/sist/8cc235ca-42f1-4742-9a3a-444847507314/sist-en-12063-2002>

documented, or other clearly established information related to the ground and installation conditions, involving similar types of soil and rock and for which similar behaviour is expected. Information gained locally is considered to be particularly relevant

3.6

cushion

material, fitted into a recess in the driving cap, which smoothes the impact force of the falling hammer on the driving cap and on the head of the sheet pile (see figure 2)

3.7

de-clutching

disconnection of the interlock during sheet pile driving

- 3.8**
de-clutching detector
instrument for determining whether or not the interlocks of adjacent sheet piles are fully engaged during driving
- 3.9**
driving cap
device, placed on the top of the sheet pile which transmits the blow of the hammer evenly, thereby preventing damage of the sheet pile head (see figure 2)
- 3.10**
driving
any method of installing the sheet piles to the required depth
- 3.11**
driving method
method of driving such as panel driving, pitch and drive, staggered driving by means of impact, vibration pressing or by a combination of these
- 3.12**
driving assistance
method to reduce the penetration resistance during driving, such as jetting or pre-augering
- 3.13**
fish plate, splice plate
steel plate which joins two lengths of sheet pile together (see figure B.2)
- 3.14**
guide frame
frame consisting of one or more stiff guide beams, normally of steel or wood, to position and maintain the alignment of sheet piles during pitching and driving
- 3.15**
hammer
part of piling equipment for driving sheet piles by percussion impact
- 3.16**
leader
beam or similar, attached to the driving rig to lead the sheet pile and the hammer (or the vibrator) during driving (see figures 2, 3 and 5)
- 3.17**
leader slide
guiding device connecting the drive cap and/or the hammer to the leader (see figures 2 and 3)
- 3.18**
leading system
whole system to guide the sheet pile and the hammer (or the vibrator) during driving (see figure 3)
- 3.19**
rock dowel
rod protruding from the toe of the sheet pile, used for fixing sheet piles to the bed-rock (see figure 13)
- 3.20**
screw anchor
rod with a screw blade at the end, which is rotated into the natural ground behind the sheet piles to provide an anchorage
- 3.21**
shackle
device for lifting sheet piles from the ground and placing them in the vertical position (see figure A.7)

iTeh STANDARD PREVIEW
(standards.iteh.ai)

SIST EN 12063:2002
<https://standards.iteh.ai/catalog/standards/sist/8cc235ca-42f1-4742-9a3a-4d4847e5072d/sist-en-12063-2002>

Page 8
EN 12063:1999

3.22
sheet pile

individual element of a sheet pile wall (single, double or multiple sheet pile)

3.23
sheet pile wall

screen of sheet piles which forms a continuous wall. For steel sheet piles continuity is provided by interlocking of the joints, fitting of longitudinal grooves or by means of special connectors and for timber sheet piles, by tongue and groove

3.24
sheet pile wall structure

structure, consisting of sheet piles, soil and rock, anchorages, bracings and walings, which retains ground and water. The elements are shown in figure 4

3.25
site inspection

inspection of the construction site and its surroundings

3.26
site investigation

geotechnical investigations on and near the construction site

3.27
slippage

relative longitudinal displacement between the interlocks of adjacent sheet piles

3.28
strut
long compression member, usually of steel, wood or reinforced concrete, for the support of the sheet pile walls and normally connected to the walings

3.29
template

specific type of guide frame, used for positioning curved or angled sheet pile walls. They often incorporate a working platform or access staging for piling operatives

3.30
threader

device fixed to the toe of a sheet pile in order to guide the sheet pile into the interlock of a sheet pile already placed in the guide frame (see figure A.8)

3.31
vibrator

vibrating unit for the driving and extraction of the sheet piles and the primary and secondary elements of a combined wall

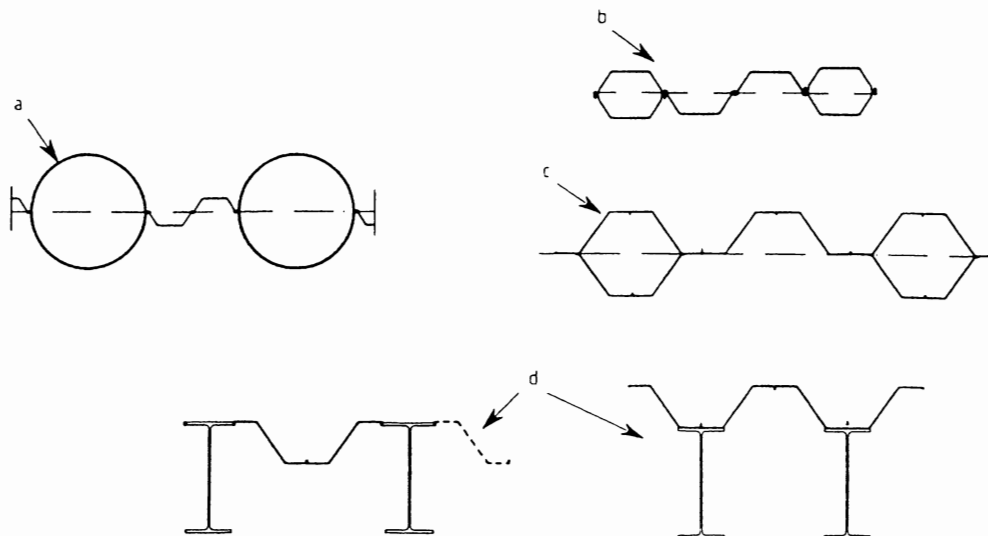
3.32
waling

horizontal beam, usually of steel or reinforced concrete, fixed to the sheet pile wall and connected to the anchorage or struts, in order to distribute the applied anchor- or strut forces equally over the sheet pile wall.

iTeh STANDARD PREVIEW
(standards.iteh.ai)

[SIST EN 12063:2002](https://standards.iteh.ai/catalog/standards/sist/8cc235ca-42f1-4742-9a3a-4d4847e5072d/sist-en-12063-2002)

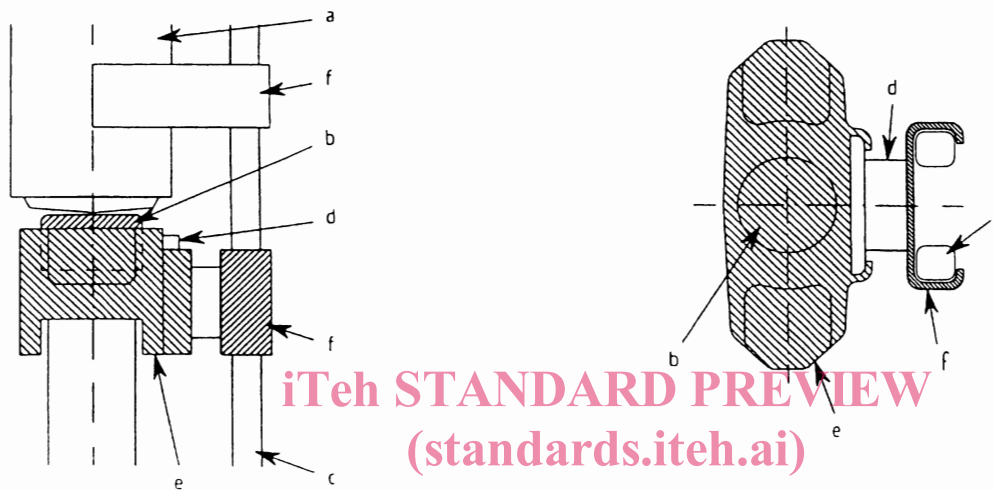
<https://standards.iteh.ai/catalog/standards/sist/8cc235ca-42f1-4742-9a3a-4d4847e5072d/sist-en-12063-2002>



Legend

- a tubes + sheet piles
- b U box piles + U sheet piles
- c Z box piles + Z sheet piles
- d H beams + Z sheet piles

Figure 1 - Examples of combined walls



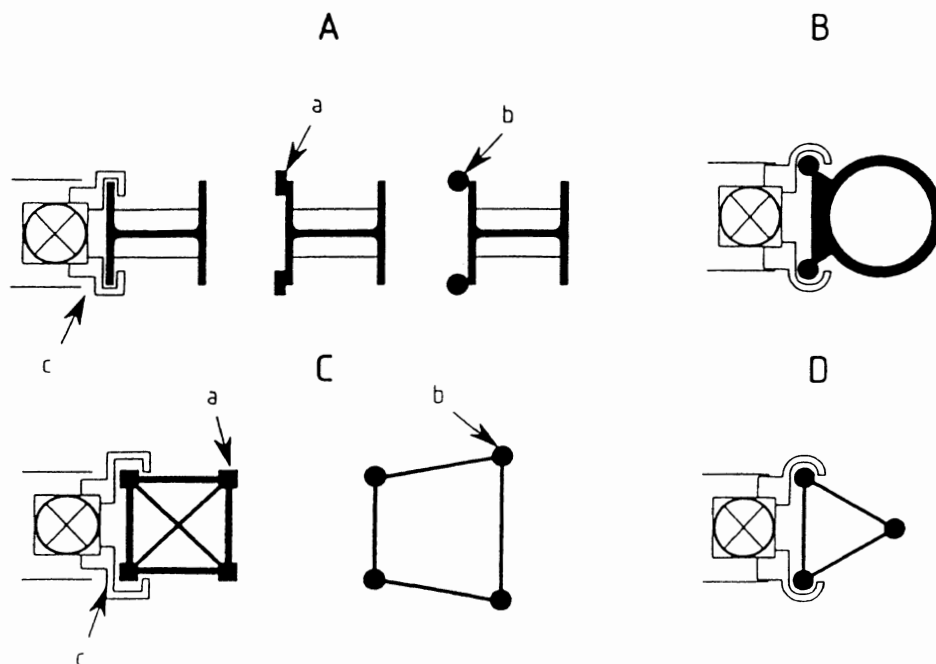
iTeh STANDARD PREVIEW
(standards.iteh.ai)

Legend

- a hammer
- b cushion
- c leader
- d sliding guide
- e driving cap
- f leader slide

SIST EN 12063:2002
<https://standards.iteh.ai/catalog/standards/sist/8cc235ca-42f1-4742-9a3a-4d4847e5072d/sist-en-12063-2002>

Figure 2 - Example of a driving cap

**Legend**

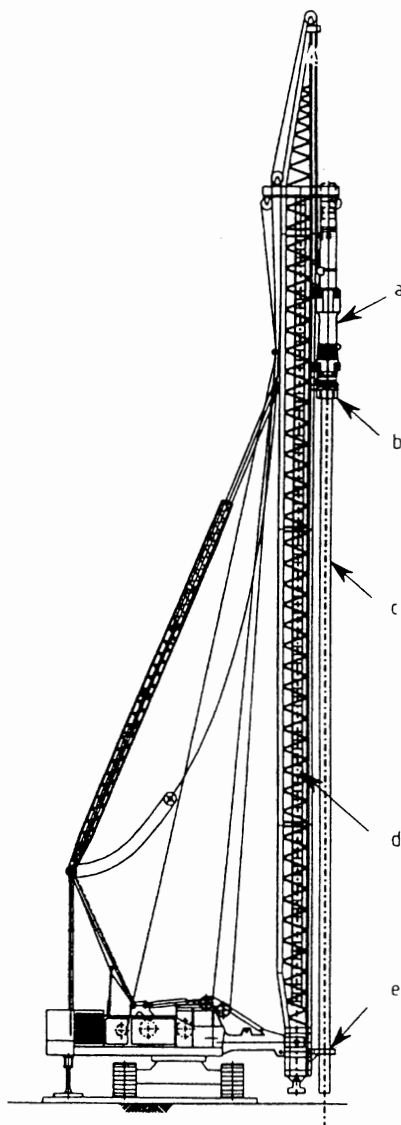
A H beam lead	a square tube
B pile leader	b round tube
C truss leader	c leader slide
D triangular leader	

Figure 3 - Examples of leading systems

iTeh STANDARD PREVIEW
(standards.iteh.ai)

SIST EN 12063:2002

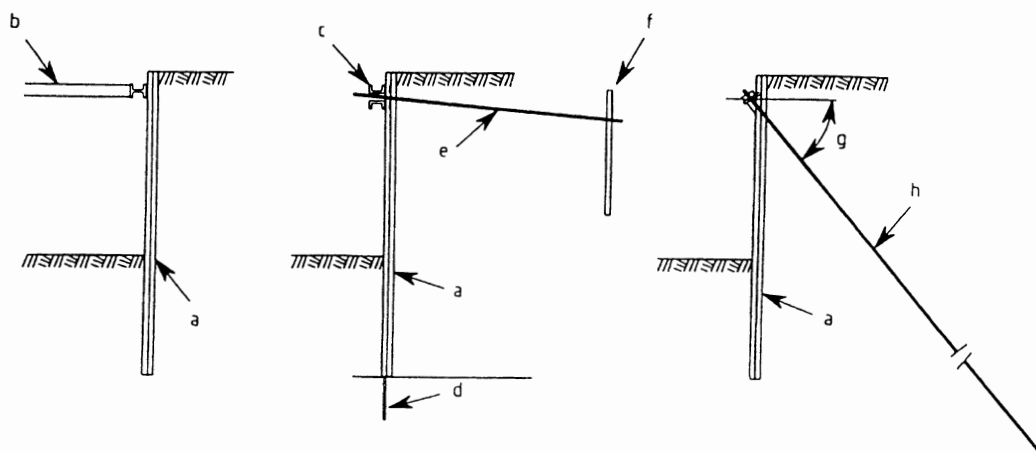
<https://standards.iteh.ai/catalog/standards/sist/8cc235ca-42f1-4742-9a3a-4d4847e5072d/sist-en-12063-2002>

**Legend**

- a hammer
- b driving cap
- c sheet pile
- d leader
- e pile guide

iTeh STANDARD PREVIEW
(standards.iteh.ai)

SIST EN 12063:2002
Figure 4 - Examples of sheet pile wall structures
<https://standards.iteh.ai/catalog/standards/sist/8cc235ca-4211-4742-9a3a-4d4847e5072d/sist-en-12063-2002>



Legend

a	sheet piles	e	tie rod
b	strut	f	anchor plate or screen
c	waling	g	variable angle
d	rock dowel	h	ground anchor or tension pile

Figure 5 - Example of a sheet pile driving rig with fixed leader
(standards.iteh.ai)

4 Information needed for the execution of sheet pile walls

4.1 General

The following information shall be made available before the execution of the sheet pile wall structure commences :

- location maps of the construction site, including access roads and possible hindrances ;
- level and position of fixed reference points at or near the construction site ;
- limitations concerning the access for equipment and materials ;
- location of all services such as electricity, telephone, water and gas supply pipes and sewers ;

- geotechnical data of the construction site ;
- composition and stratification of the ground and its variation across the site ;
- strength and deformation properties of the soil and rock layers ;
- the possible presence of stones and boulders in the ground ;
- the possibility of cohesive soils adhering to the piles when extracted (see 8.11) ;
- hydrogeological data of the area in which the construction site will be situated ;
- specifications of the sheet pile walls, including all details such as type, profile, grade, protection and preservation systems and also whether any fixings of the interlocks are required to ensure transmission of the longitudinal shear forces ;
- presence of sensitive buildings and/or installations in the vicinity of the construction site ;
- restrictions concerning noise and vibrations ;
- restrictions concerning driving method and driving assistance ;
- restrictions regarding the permeability of the sheet pile wall for water or other fluids ;
- various stages of the execution of the sheet pile wall structure required by the design ;
- in the case of waterfront structures ; the water levels and their fluctuations (amplitude, frequency and the cause of the fluctuations, e.g. discharge of a barrage, tide etc.) ;
- data regarding possible soil contamination ;
- a list of any identified specific items to be investigated (see 4.2).

4.2 Specific

4.2.1 The following specific information shall be made available before the beginning of the works :

- all specific design information which is important to the execution ;
- restrictions related to the presence, at or near the site, of ground anchors, cathodic protection devices and similar ;
- the history of the building site: presence of foundation remnants or other artificial elements in the ground.

ITeH STANDARD PREVIEW
(standards.iteh.ai)

4.2.2 Information about the following matters should be made available before the beginning of the work :

SIST EN 12063:2002

- special aspects particular to the project, such as corrosion and abrasion problems ;
- comparable experience from works in the neighbourhood or from similar works carried out under similar conditions ;
- the condition of nearby buildings, structures or installations and the nature and depth of their foundation ;
- data about adverse weather conditions, for example, wind conditions and frequency ;
- severe frost action in the ground, where this can lead to overstressing of the sheet pile wall.