
International Standard



7647

INTERNATIONAL ORGANIZATION FOR STANDARDIZATION • МЕЖДУНАРОДНАЯ ОРГАНИЗАЦИЯ ПО СТАНДАРТИЗАЦИИ • ORGANISATION INTERNATIONALE DE NORMALISATION

Commercial vehicles and buses — Gearbox flanges — Type S

Véhicules utilitaires et autobus — Brides de boîtes de vitesses — Type S

First edition — 1986-08-15

ITeH STANDARD PREVIEW
(standards.iteh.ai)

[ISO 7647:1986](#)

<https://standards.iteh.ai/catalog/standards/sist/97efb945-4f84-4080-86f5-1890c0fe4c32/iso-7647-1986>

UDC 629.114.4/.5 : 62-58

Ref. No. ISO 7647-1986 (E)

Descriptors : road vehicles, commercial road vehicles, buses (vehicles), gearboxes, flanges, dimensions, designation.

Foreword

ISO (the International Organization for Standardization) is a worldwide federation of national standards bodies (ISO member bodies). The work of preparing International Standards is normally carried out through ISO technical committees. Each member body interested in a subject for which a technical committee has been established has the right to be represented on that committee. International organizations, governmental and non-governmental, in liaison with ISO, also take part in the work.

Draft International Standards adopted by the technical committees are circulated to the member bodies for approval before their acceptance as International Standards by the ISO Council. They are approved in accordance with ISO procedures requiring at least 75 % approval by the member bodies voting.

International Standard ISO 7647 was prepared by Technical Committee ISO/TC 22, *Road vehicles*.

Users should note that all International Standards undergo revision from time to time and that any reference made herein to any other International Standard implies its latest edition, unless otherwise stated.

iteh STANDARD PREVIEW
(standards.iteh.ai)

Visit <http://standards.iteh.ai> to purchase any of the standards listed on this page.
1890c0fe4c32/iso-7647-1986

Commercial vehicles and buses — Gearbox flanges — Type S

iTeh STANDARD PREVIEW (standards.iteh.ai)

1 Scope and field of application

This International Standard specifies the nominal dimensions and tolerances which affect the interchangeability between gearbox flanges and mating parts used on commercial vehicles and buses. The flanges covered by this International Standard are designated type S. They are not interchangeable with type A flanges dealt with in ISO 7646.

Dimensions not specified are left to the discretion of the component manufacturer.

2 References

ISO 286, *ISO system of limits and fits*.¹⁾

ISO 1101, *Technical drawings — Geometrical tolerancing — Tolerancing of form, orientation, location and run-out — Generalities, definitions, symbols, indications on drawings*.

ISO 7646, *Road vehicles — Gearbox flanges for commercial vehicles and buses — Type A*.

3 Dimensions and tolerances

Nominal dimensions, tolerances and bolt hole fixing positions which affect the interchangeability of type S flanges for gearboxes are shown in figures 1 to 3, and given in the table.

4 Designation

Gearbox flanges meeting the requirements of this International Standard shall be identified by the following details in the order specified:

- reference to this International Standard;
- the size code (see table);
- the number of fixing bolts;
- the size of the fixing bolts.

Example:

Designation of a gearbox flange type S with size code 1 500 and four 14 mm fixing bolts:

Flange ISO 7647 — 1 500 × 4 × 14

1) At present at the stage of draft. (Revision of ISO/R 286-1962.)

Position and run-out tolerances in millimetres

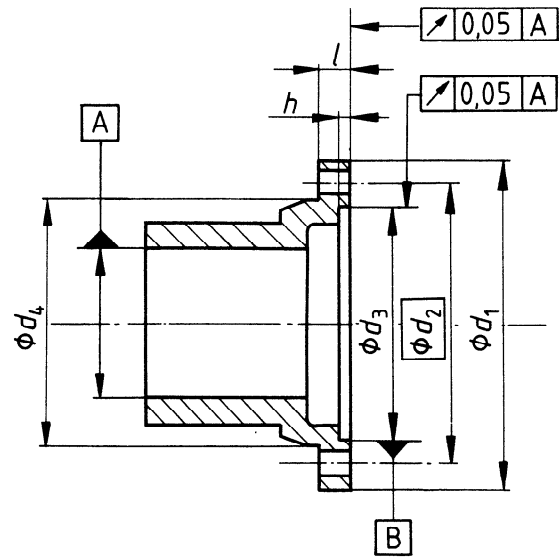
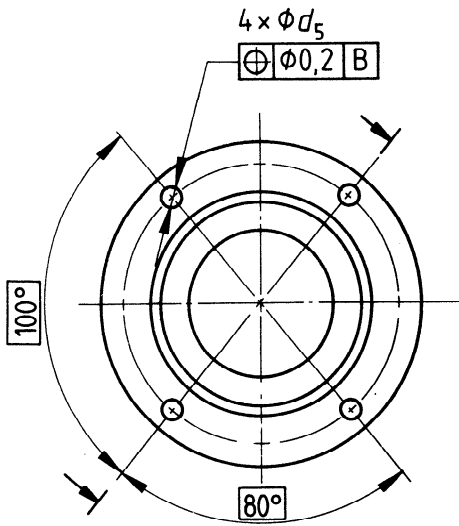


Figure 1

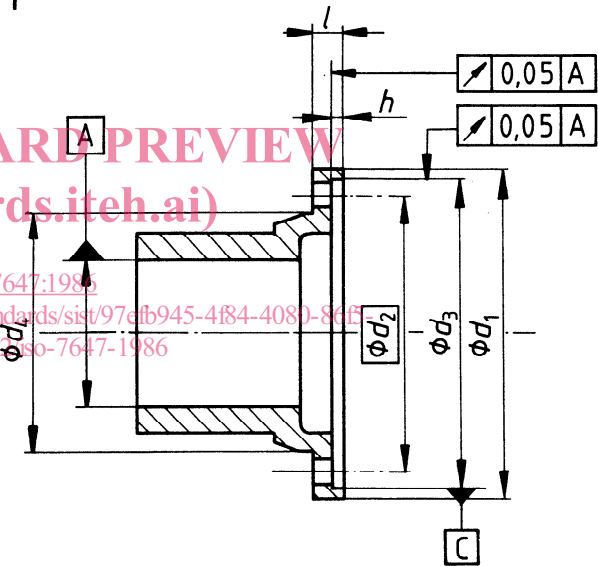
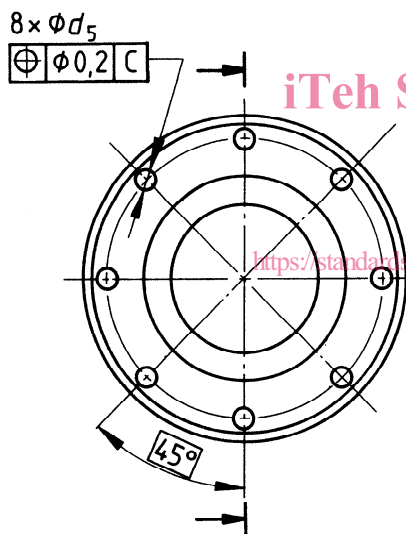


Figure 2

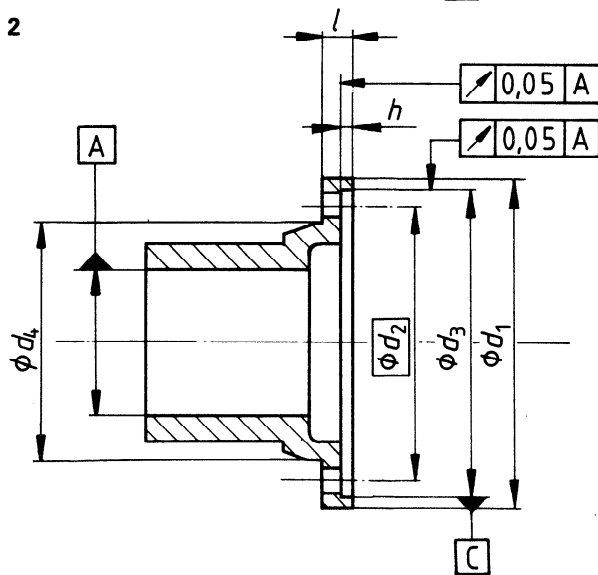
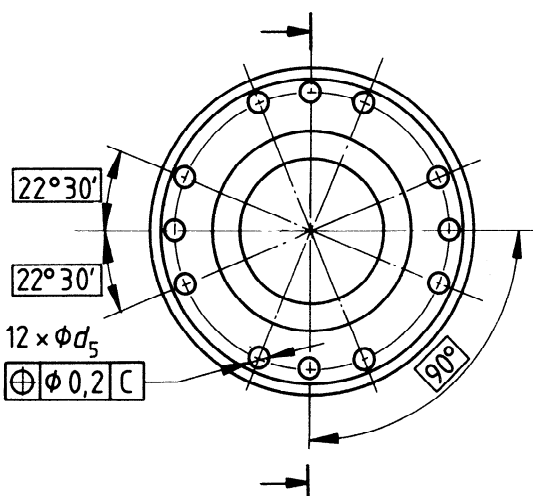


Figure 3

Table – Dimensions and tolerances

Dimensions in millimetres

Size code	Figure number	d_1	Number of holes	d_5 + 0,2 0	d_2	d_3 H7 ¹⁾	$d_4^{2)}$ 0 – 0,2	l 0 – 0,5	h + 0,2 0
1 100	1	87	4	8,1	69,85	57,10	56,4	8	2,0
1 300	1	97	4	10,1	79,37	60,32	62,2	8	2,3
1 400	1	116	4	12,1	95,25	69,85	76	8	2,3
1 500	1	151	4	14,1	120,65	95,25	98,4	10	2,3
1 510	1	146	4	12,1	120,65	95,25	101,4	10	2,3
1 600	2	175	8	10,1	155,57	168,22	138,4	11	1,5
1 700	2	203	8	10,1	184,15	196,86	167	11	1,5
1 800	3	203	12	10,1	184,15	196,86	167	11	1,5

1) See ISO 286.

2) This dimension shall be used when required to prevent bolt heads from rotating.

iTeh STANDARD PREVIEW (standards.iteh.ai)

ISO 7647:1986

<https://standards.iteh.ai/catalog/standards/sist/97efb945-4f84-4080-86f5-1890c0fe4c32/iso-7647-1986>

iTeh STANDARD PREVIEW
(standards.iteh.ai)

This page intentionally left blank

[ISO 7647:1986](#)

<https://standards.iteh.ai/catalog/standards/sist/97efb945-4f84-4080-86f5-1890c0fe4c32/iso-7647-1986>

iTeh STANDARD PREVIEW
(standards.iteh.ai)

This page intentionally left blank

[ISO 7647:1986](#)

<https://standards.iteh.ai/catalog/standards/sist/97efb945-4f84-4080-86f5-1890c0fe4c32/iso-7647-1986>

iTeh STANDARD PREVIEW
(standards.iteh.ai)

This page intentionally left blank

[ISO 7647:1986](#)

<https://standards.iteh.ai/catalog/standards/sist/97efb945-4f84-4080-86f5-1890c0fe4c32/iso-7647-1986>