

---

# International Standard



# 7706

---

INTERNATIONAL ORGANIZATION FOR STANDARDIZATION • МЕЖДУНАРОДНАЯ ОРГАНИЗАЦИЯ ПО СТАНДАРТИЗАЦИИ • ORGANISATION INTERNATIONALE DE NORMALISATION

---

## Road vehicles — Commercial vehicles — Clearance envelope for power take-offs (PTO)

*Véhicules routiers — Véhicules utilitaires — Volumes de dégagement de montage pour prises de puissance*

First edition — 1985-03-15

**ITeH STANDARD PREVIEW**  
**(standards.iteh.ai)**

[ISO 7706:1985](https://standards.iteh.ai/catalog/standards/sist/608a3ae7-3e80-4cd2-a509-0bb8903d2294/iso-7706-1985)

<https://standards.iteh.ai/catalog/standards/sist/608a3ae7-3e80-4cd2-a509-0bb8903d2294/iso-7706-1985>

---

UDC 629.11.013 : 629.114.4

Ref. No. ISO 7706-1985 (E)

Descriptors : road vehicles, commercial road vehicles, power takeoff.

## Foreword

ISO (the International Organization for Standardization) is a worldwide federation of national standards bodies (ISO member bodies). The work of preparing International Standards is normally carried out through ISO technical committees. Each member body interested in a subject for which a technical committee has been established has the right to be represented on that committee. International organizations, governmental and non-governmental, in liaison with ISO, also take part in the work.

Draft International Standards adopted by the technical committees are circulated to the member bodies for approval before their acceptance as International Standards by the ISO Council. They are approved in accordance with ISO procedures requiring at least 75 % approval by the member bodies voting.

International Standard ISO 7706 was prepared by Technical Committee ISO/TC 22, *Road vehicles*.

**iTeh STANDARD PREVIEW**  
(standards.iteh.ai)

<https://standards.iteh.ai/catalog/standards/sist/608a3ae7-3e80-4cd2-a509-0bb8903d2294/iso-7706-1985>

# Road vehicles — Commercial vehicles — Clearance envelope for power take-offs (PTO)

## iTeh STANDARD PREVIEW (standards.iteh.ai)

### 0 Introduction

It should be appreciated that the requirements of this International Standard did not necessarily reflect current practice at the time of its preparation, but it is recommended that, in the interest of interchangeability for the future, its provisions should be adopted for new designs.

The clearance envelope which is specified should meet most requirements, but if, for any reason, they are not suitable, the vehicle manufacturer and the PTO manufacturer will have to find an alternative solution which is acceptable to both.

### 1 Scope and field of application

This International Standard lays down the dimensions of clearance envelopes for regular and heavy duty type truck transmission power take-offs. It is applicable to clearance envelopes required immediately adjacent to the PTO openings or drives on truck transmissions.

### 2 Reference

ISO 7706:1985

ISO 7804, Road vehicles — Commercial vehicles — Side openings for truck power take-offs.<sup>1)</sup>

### 3 General

3.1 Two clearance envelopes are specified:

- Type S: clearance envelopes for side-mounted PTO
- Type Z: clearance envelopes for rear-mounted PTO

3.2 A clearance envelope is shown in figure 1 for a hydraulic pump mounted directly on the PTO. The installation envelope shown as a dotted outline includes the additional clearance required to mount the pump.

3.3 Adequate clearance for a driveshaft for remote-mounted ancillary equipment shall be provided.

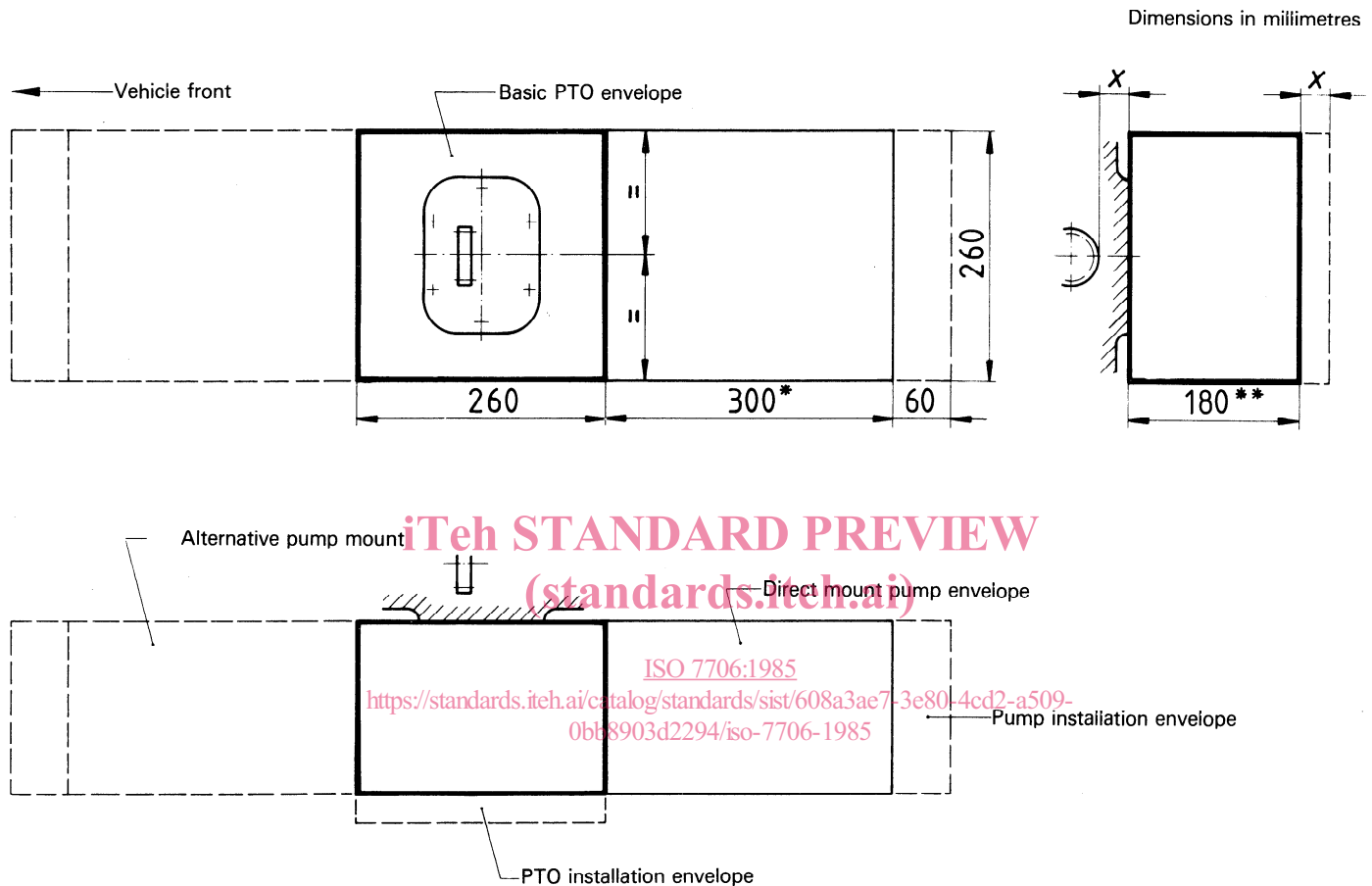
3.4 Additional space may be required for suction and pressure line connections at the pump.

1) At present at the stage of draft.

#### 4 Side-mounted PTO

The clearance envelopes for side-mounted PTO are shown in figure 1.

Lateral clearance required for slipping the PTO over the mounting studs and the extended gear during the installation shall be provided in accordance with the depth  $x$  of the PTO drive gear as specified in ISO 7804.



\* This value may be 400 mm for pumps with end-mounted suction and pressure lines.

\*\* For heavy duty application (Type H, 8 bolt fixing) more space may be required (for example 225 mm).

Figure 1 — Clearance envelope for side-mounted PTO (Type S)

## 5 Rear-mounted PTO

The clearance envelopes for rear-mounted PTO are shown in figure 2.

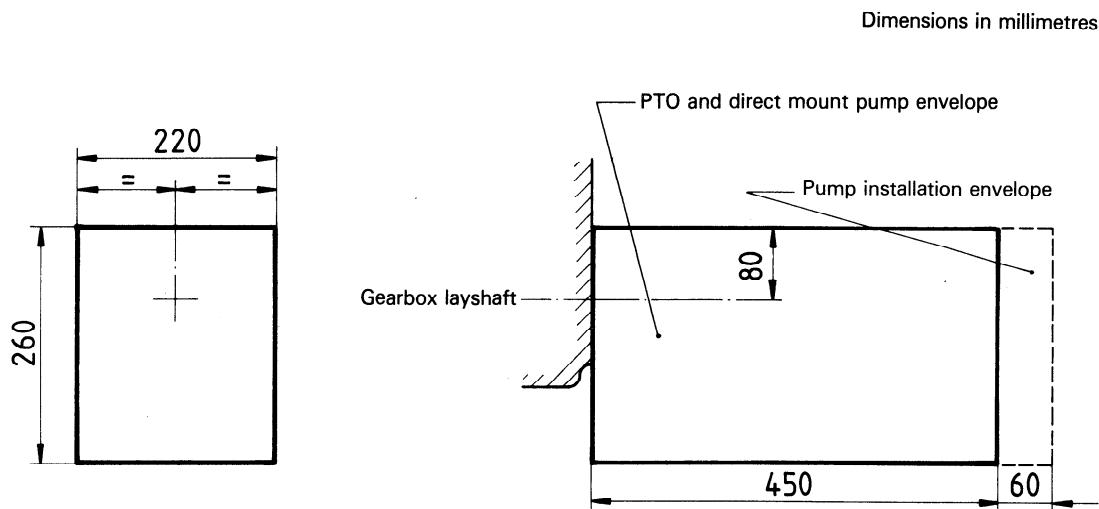


Figure 2 — Clearance envelope for rear-mounted PTO (Type Z)

iTeH STANDARD PREVIEW  
(standards.iteh.ai)

## 6 Designation

Example for the designation of a clearance envelope for side-mounted PTO (Type S):

PTO envelope ISO 7706 - S

ISO 7706-1985  
<https://standards.iteh.ai/catalog/standards/sist/608a3ae7-3e80-4cd2-a509-0bb8903d2294/iso-7706-1985>

**iTeh STANDARD PREVIEW**  
**(standards.iteh.ai)**

This page intentionally left blank

[ISO 7706:1985](#)

<https://standards.iteh.ai/catalog/standards/sist/608a3ae7-3e80-4cd2-a509-0bb8903d2294/iso-7706-1985>

**iTeh STANDARD PREVIEW**  
**(standards.iteh.ai)**

This page intentionally left blank

[ISO 7706:1985](#)

<https://standards.iteh.ai/catalog/standards/sist/608a3ae7-3e80-4cd2-a509-0bb8903d2294/iso-7706-1985>

**iTeh STANDARD PREVIEW**  
**(standards.iteh.ai)**

This page intentionally left blank

[ISO 7706:1985](#)

<https://standards.iteh.ai/catalog/standards/sist/608a3ae7-3e80-4cd2-a509-0bb8903d2294/iso-7706-1985>