



SLOVENSKI STANDARD

SIST ISO 8364:1995

01-december-1995

Alpske smuči in varnostne vezi - Področje montaže varnostnih vezi - Zahteve in preskusne metode

Alpine skis and bindings -- Binding mounting area -- Requirements and test methods

Skis et fixations de skis alpins -- Zone de montage de la fixation -- Exigences de tenue et méthodes d'essai

iTeh STANDARD PREVIEW
(standards.iteh.ai)

Ta slovenski standard je istoveten z: ^{SIST ISO 8364:1995} **ISO 8364:1991**
<https://standards.iteh.ai/catalog/standards/sist/1725a001-ac22-41c4-af97-e4da9a14c906/sist-iso-8364-1995>

ICS:

97.220.20 Oprema za zimske športe Winter sports equipment

SIST ISO 8364:1995

en

iTeh STANDARD PREVIEW
(standards.iteh.ai)

[SIST ISO 8364:1995](#)

<https://standards.iteh.ai/catalog/standards/sist/f723a801-ac22-41c4-af97-e4da9a14c906/sist-iso-8364-1995>

INTERNATIONAL STANDARD

ISO
8364

Second edition
1991-09-15

Alpine skis and bindings — Binding mounting area — Requirements and test methods

iTeh STANDARD PREVIEW
(standards.iteh.ai)

*Skis et fixations de skis alpins — Zone de montage de la fixation —
Exigences de tenue et méthodes d'essai*

[SIST ISO 8364:1995](https://standards.iteh.ai/catalog/standards/sist/f723a801-ac22-41c4-af97-e4da9a14c906/sist-iso-8364-1995)

[https://standards.iteh.ai/catalog/standards/sist/f723a801-ac22-41c4-af97-
e4da9a14c906/sist-iso-8364-1995](https://standards.iteh.ai/catalog/standards/sist/f723a801-ac22-41c4-af97-e4da9a14c906/sist-iso-8364-1995)



Reference number
ISO 8364:1991(E)

Foreword

ISO (the International Organization for Standardization) is a worldwide federation of national standards bodies (ISO member bodies). The work of preparing International Standards is normally carried out through ISO technical committees. Each member body interested in a subject for which a technical committee has been established has the right to be represented on that committee. International organizations, governmental and non-governmental, in liaison with ISO, also take part in the work. ISO collaborates closely with the International Electrotechnical Commission (IEC) on all matters of electrotechnical standardization.

Draft International Standards adopted by the technical committees are circulated to the member bodies for voting. Publication as an International Standard requires approval by at least 75 % of the member bodies casting a vote.

International Standard ISO 8364 was prepared by Technical Committee ISO/TC 83, *Sports and recreational equipment*, Sub-Committee SC 4, *Skis*.

This second edition cancels and replaces the first edition (ISO 8364:1985), of which it constitutes a technical revision.

© ISO 1991

All rights reserved. No part of this publication may be reproduced or utilized in any form or by any means, electronic or mechanical, including photocopying and microfilm, without permission in writing from the publisher.

International Organization for Standardization
Case Postale 56 • CH-1211 Genève 20 • Switzerland

Printed in Switzerland

Alpine skis and bindings — Binding mounting area — Requirements and test methods

1 Scope

This International Standard specifies requirements and test methods for binding mounting areas, ski bindings and retention devices of alpine skis in order to optimize the compatibility of the functional unit "ski-binding — retention device — boot".

It contains data for the manufacturer of alpine skis, bindings and retention devices concerning dimensions, tests and other specifications for the binding mounting area.

This International Standard is applicable to alpine skis of the following nominal lengths:

- group 1: $l_N \geq 1700 \text{ mm}$ ¹⁾
- group 2: $1400 \text{ mm} \leq l_N < 1700 \text{ mm}$
- group 3: $1000 \text{ mm} \leq l_N < 1400 \text{ mm}$
- group 4: $750 \text{ mm} \leq l_N < 1000 \text{ mm}$

The requirements for group 1 are also applicable to adult skis shorter than 1700 mm.

For dimensions with no tolerance indicated, a tolerance of $\pm 1 \text{ mm}$ is valid.

2 Normative references

The following standards contain provisions which, through reference in this text, constitute provisions of this International Standard. At the time of publication, the editions indicated were valid. All standards are subject to revision, and parties to agreements based on this International Standard are encouraged to investigate the possibility of applying the most recent editions of the standards in-

dicated below. Members of IEC and ISO maintain registers of currently valid International Standards.

ISO 2632-1:1985, *Roughness comparison specimens — Part 1: Turned, ground, bored, milled, shaped and planed.*

ISO 6004:1991, *Alpine skis — Ski binding screws — Requirements.*

ISO 6289:1985, *Skis — Terms and definitions.*

ISO 6506:1981, *Metallic materials — Hardness test — Brinell test.*

ISO 10045:1991, *Alpine skis — Binding mounting area — Requirements for test screws.*

3 Definitions

For the purposes of this International Standard, the definitions of ISO 6289, and the following, apply.

3.1 binding mounting: All the connections between the parts of the binding and the ski, especially designed to transmit the forces between binding and ski and which shall fulfil the minimum strength requirements determined for the function of the binding.

4 Specifications of binding mounting area

4.1 Indication of mounting point

The mounting point shall be located by the ski manufacturer with a clearly visible mark at least on the left side and/or the top surface of the ski, up to the left outer edge.

1) To be foreseen in the functional unit, where ski boots of size > 22 (Mondopoint system) are used.

ISO 8364:1991(E)

4.2 Length of binding mounting area

The length of the binding mounting area forwards and backwards from the mounting point shall be

- group 1: 275 mm
- group 2: 240 mm
- group 3: 210 mm
- group 4: 190 mm

4.3 Width of binding mounting area

The minimum width of the binding mounting area shall be

- groups 1 and 2: 48 mm
- groups 3 and 4: 46 mm

symmetrical about the longitudinal axis of the ski.

4.4 Centre-to-centre distances for binding mounting screws**4.4.1 Maximum centre-to-centre distance**

The maximum centre-to-centre distance perpendicular to the centre line of the ski shall be such that the screws are located entirely within the binding mounting area.

If standard ski binding screws of nominal diameter ST 5,5 are used, the maximum centre-to-centre distance of the binding mounting screws shall be

- groups 1 and 2: 42,5 mm
- groups 3 and 4: 40,5 mm

4.4.2 Minimum centre-to-centre distance

For screws which are used for mounting of parts of the binding and retention devices, the centre-to-centre distance shall not be less than

- groups 1 and 2: 25 mm in the longitudinal direction and 20 mm in all other directions
- groups 3 and 4: 20 mm in the longitudinal direction and 15 mm in all other directions

4.5 Conditions relating to the surface of the binding mounting area**4.5.1 Transverse profile (convexity) of the surface**

Deviations of straightness of the transverse profile from a flat profile are only permissible in the form of a constant curve across the width of the mounting area; the tolerance on straightness within this area is given in figure 1.

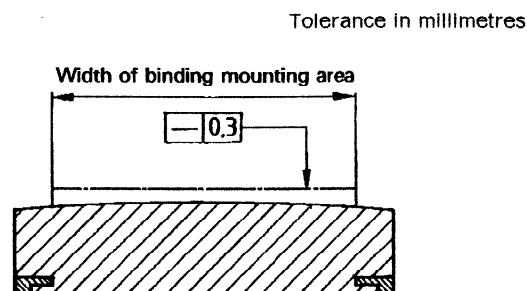


Figure 1 — Transverse profile of the surface

iTeh STANDARD PREVIEW

(standards.iteh.ai)

There shall be no step in the profile within a width of

— 55 mm for groups 1 and 2

— 50 mm for groups 3 and 4

symmetrical to the longitudinal axis; outside this area steps are allowed only into the body of the ski.

4.5.2 Longitudinal profile of the surface

Deviations from straightness of the longitudinal profile from a flat profile are only permissible in the form of a constant curve in the length of the mounting area; the tolerance on straightness in this area, the ski base being pressed against a flat surface, is given for

- groups 1 and 2: 5 mm
- groups 3 and 4: 4 mm

in figure 2.

Tolerance in millimetres

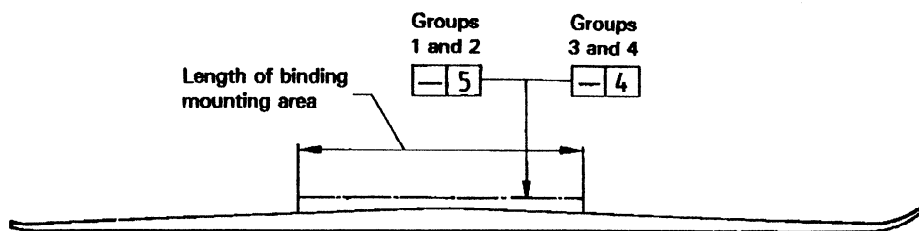


Figure 2 — Longitudinal profile of the surface

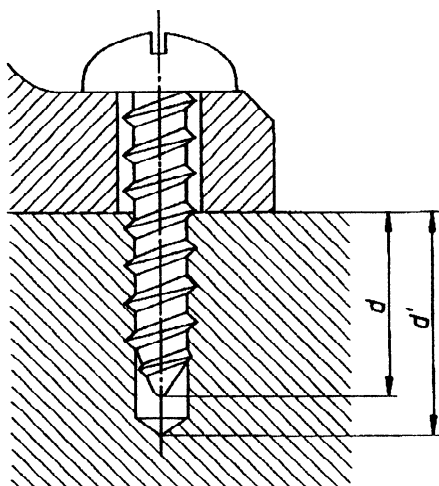
4.5.3 Side walls

Side walls shall be designed so that binding mounting with commonly used mounting devices is ensured. The basic requirement is that the clamping elements of the mounting device reach at least to the running surface of the ski.

4.6 Minimum thickness of binding mounting area of ski

Within the total binding mounting area, a drill hole depth, d' , shall be available (see figure 3) as follows:

- groups 1 and 2: 9,5 mm
- groups 3 and 4: 7,5 mm

Figure 3 — Penetration depth, d , of mounting screws

5 Strength requirements of binding mounting area

5.1 Screw retention strength

Within the defined binding mounting area, the minimum value of the screw retention strength for two screws, if the load is applied quasi-statically, shall be as follows:

- group 1: 2 200 N min.
- group 2: 1 800 N min.
- group 3: 1 300 N min.
- group 4: 1 300 N min.

5.2 Stripping resistance of the binding mounting area of the ski

The minimum value of the stripping resistance of the ski shall be 5 N·m for groups 1 and 2.

NOTE 1 The present state of the art does not allow a stripping resistance of 5 N·m for skis of groups 3 and 4. It is the responsibility of the ski manufacturer to indicate ski models demanding caution (stripping resistance lower than 5 N·m) when mounting bindings and to give mounting instructions such as smaller diameter drilling and manual screwdriving.

6 Specifications of the binding

The hole-pattern shall be in accordance with the geometrical requirements of 4.2, 4.3 and 4.4.

In order to ensure the required penetration depth, the manufacturer of the binding shall select a suitable length of binding screw, so that after binding mounting the shaft of the screw penetrates the ski. For

- groups 1 and 2: $d = 8 \text{ mm} \pm 0,5 \text{ mm}$
- groups 3 and 4: $d = 6 \text{ mm} \pm 0,5 \text{ mm}$

To avoid damaging the top layers (damage to the adhesive bond) the diameter of mounting plate holes

or countersink facing the ski shall not exceed 7 mm and drill countersink shall be designed in such a way that its penetration into the top surface of the ski does not exceed 0,6 mm.

As mounting elements, ski binding screws in accordance with ISO 6004 shall be used.

7 Apparatus

7.1 Retention strength

7.1.1 Tensile testing machine (with a pull-out device according to figure 4), having a minimum load range of 10 000 N.

The pull-out device (see figure 4) shall consist of:

- a steel attachment plate (A) with two holes of diameter 6 mm — steel hardness shall be 135 HB30 according to ISO 6506;
- a universal joint (B) which is connected to the attachment plate and to the clamping device of the test machine;
- a ski support (C) with two support rollers.

When using standard test screws according to clause 8, the following penetration depths, d , shall be reached:

- groups 1 and 2: $d = 8 \text{ mm} \pm 0,5 \text{ mm}$
- groups 3 and 4: $d = 6 \text{ mm} \pm 0,5 \text{ mm}$

7.2 Stripping resistance

7.2.1 Jig, for drilling holes, mounting test screws and determination of stripping torque (see figure 5).

The jig, used with a drill bushing, guarantees exact drill holes and screw mounting perpendicular to the top surface of the ski.

The jig is equipped with a friction plate made of steel with hardness of approximately 135 HB30 according to ISO 6506, and surface roughness R_a of 0,8 μm according to ISO 2632-1.

When using standard test screws according to clause 8, the following penetration depths shall be reached:

- groups 1 and 2: $d = 8 \text{ mm} \pm 0,5 \text{ mm}$
- groups 3 and 4: $d = 6 \text{ mm} \pm 0,5 \text{ mm}$

iTeh STANDARD PREVIEW
(standards.iteh.ai)

SIST ISO 8364:1995

Dimensions in millimetres

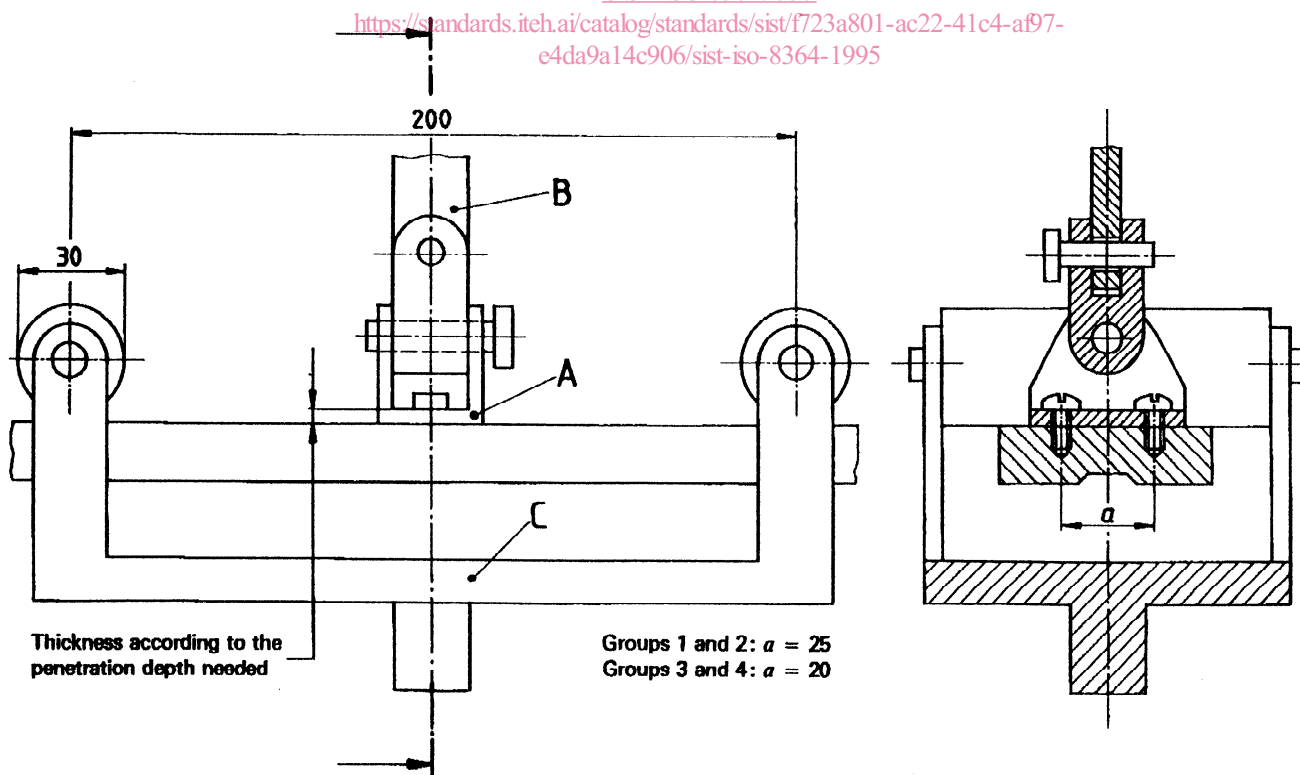


Figure 4 — Tensile testing machine with pull-out device

Dimensions in millimetres

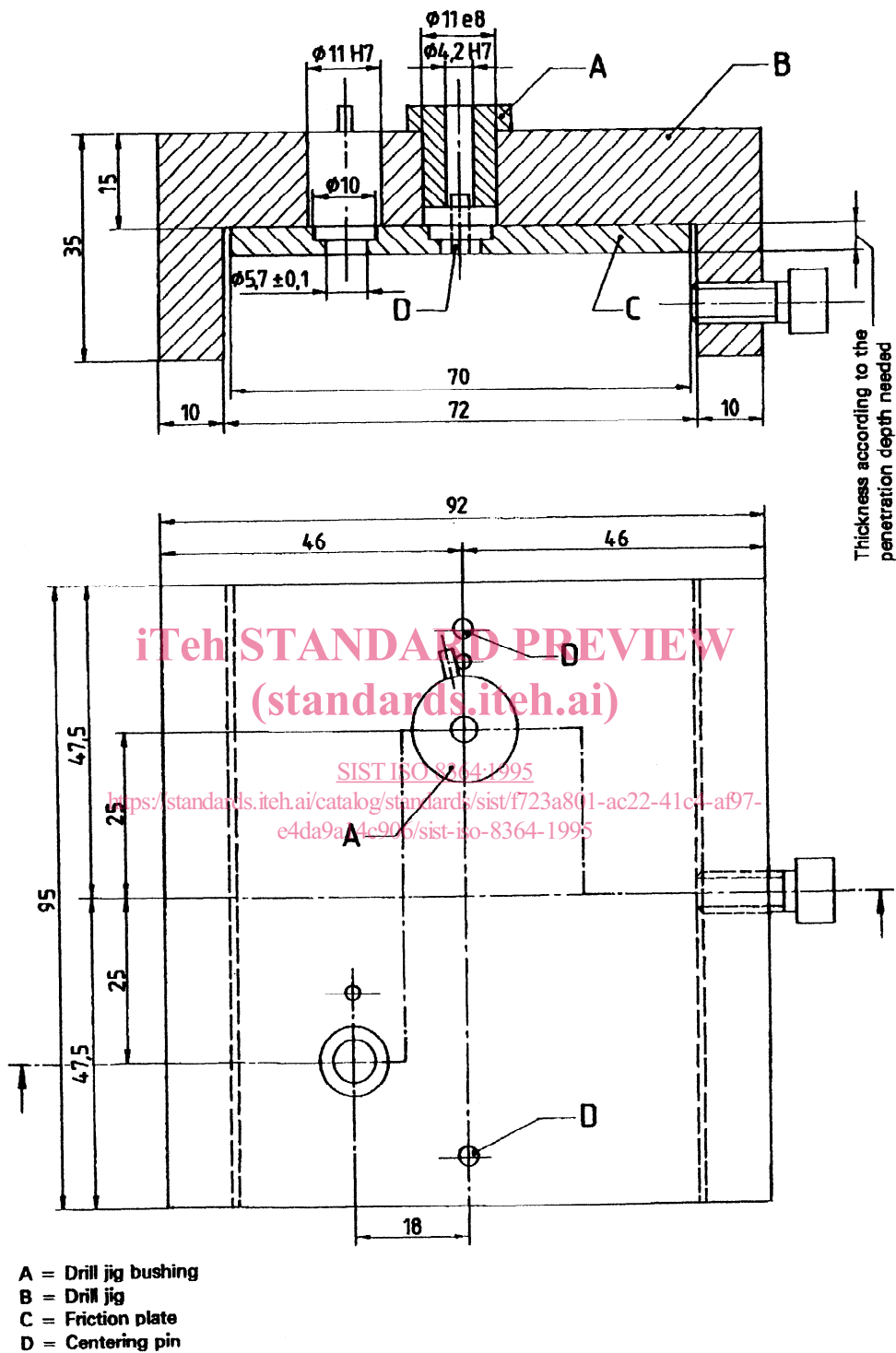


Figure 5 — Drill and test jig