



Standard Specification for Steel Deck Gear Stowage Box [Metric]¹

This standard is issued under the fixed designation F 1019M; the number immediately following the designation indicates the year of original adoption or, in the case of revision, the year of last revision. A number in parentheses indicates the year of last reapproval. A superscript epsilon (ϵ) indicates an editorial change since the last revision or reapproval.

1. Scope

1.1 This specification covers the design, material, and manufacture of steel deck gear stowage boxes.

1.2 This specification shall not be used for life preserver or pyrotechnic stowage.

1.3 The values stated in SI units are to be regarded as the standard. The values given in parentheses are for information only.

2. Referenced Documents

2.1 ASTM Standards:

A 36/A36M Specification for Carbon Structural Steel²

A 123 Specification for Zinc (Hot-Dip Galvanized) Coatings on Iron and Steel Products³

B 21 Specification for Naval Brass Rod, Bar, and Shapes⁴

2.2 Other Documents:

ABS Rules for Building and Classing Steel Vessels⁵

SSPC Specification 6⁶

AWS 8a D 1.1 Structural Welding Code⁷

2.3 Military Specifications:

MIL-S-901, Shock Test, H.I. (High Impact); Shipboard Machinery, Equipment and Systems; Requirement for⁸

3. Classification

3.1 *Deck Gear Stowage Boxes*, shall be the following types:

3.1.1 *Type I*—Conforming to all dimensions in Fig. 1, Fig. 2, Fig. 3, Fig. 4, Fig. 5, Fig. 6, Fig. 7, Fig. 8, and Fig. 9.

3.1.2 *Type II*—Conforming only to Fig. 1 configuration and meeting the requirements of Sections 4 through 8, dimensions and material specification made to fit unique requirements of customer.

¹ This specification is under the jurisdiction of ASTM Committee F-25 on Shipbuilding and is the direct responsibility of Subcommittee F25.03 on Outfitting.

Current edition approved Aug. 15, 1995. Published October 1995. Originally published as F 1019 – 86. Last previous edition F 1019M – 95.

² *Annual Book of ASTM Standards*, Vol 01.04.

³ *Annual Book of ASTM Standards*, Vol 01.06.

⁴ *Annual Book of ASTM Standards*, Vol 02.01.

⁵ Available from American Bureau of Shipping, 45 Eisenhower Dr., Paramus, NJ 07652.

⁶ Available from Steel Structures Painting Council, 4400 5th Ave., Pittsburgh, PA 15213.

⁷ Available from American Welding Society, 550 N.W. Le Jeune Rd., Miami, FL 33126.

⁸ Available from Standardization Documents Order Desk, Bldg. 4 Section D, 700 Robbins Ave., Philadelphia, PA 19111-5094, Attn: NPODS.

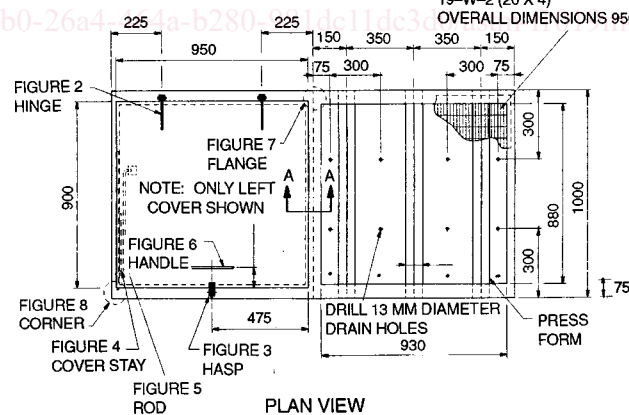
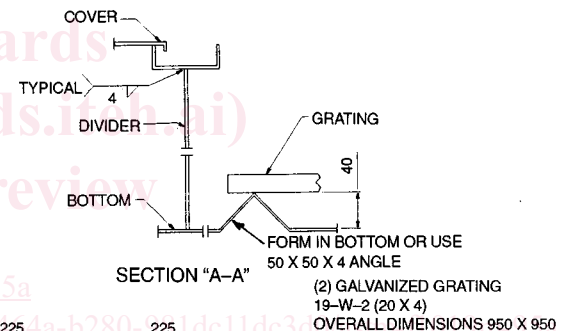
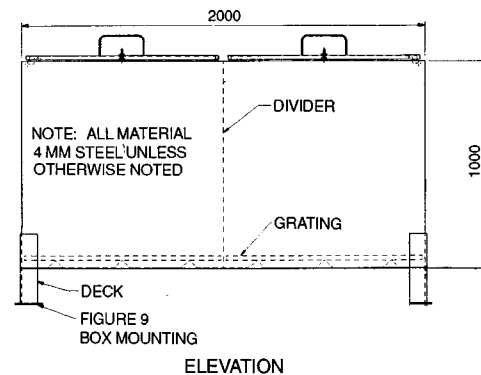


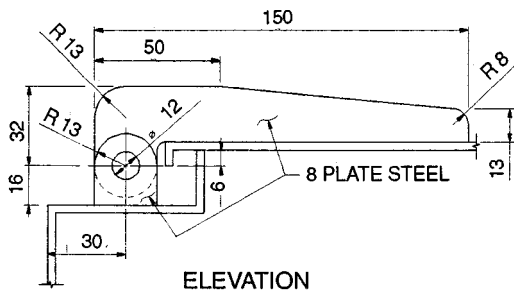
FIG. 1 Steel Deck Gear Stowage Box

4. Ordering Information

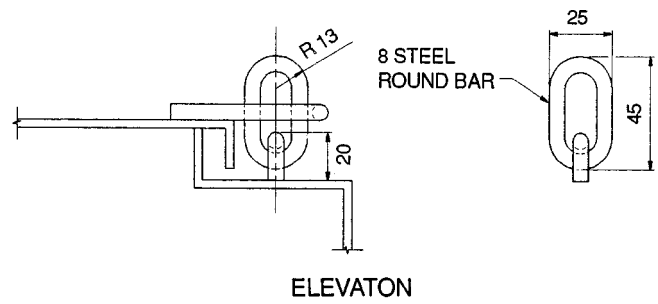
4.1 Order using this ASTM designation and year of issue, and type.

5. Materials and Manufacture

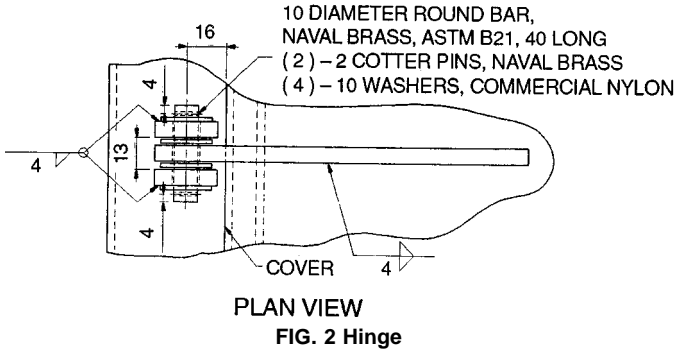
5.1 Materials:



ELEVATION

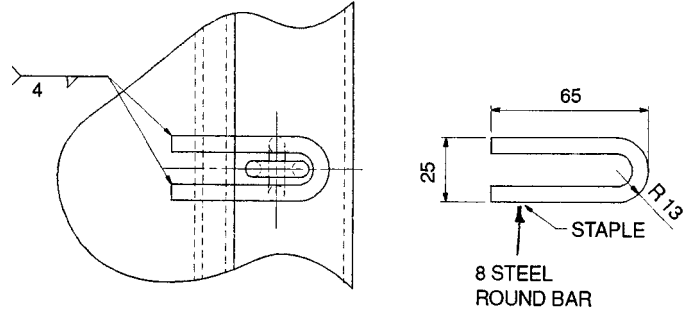


ELEVATION



PLAN VIEW

FIG. 2 Hinge



PLAN VIEW

FIG. 3 Hasp

5.1.1 The steel for the deck box shall be in accordance with Specification A 36/A 36M.

5.1.2 Nuts, bolts, and washers shall be corrosion resistant materials.

5.1.3 Materials used in construction of this box and its packaging shall be free of asbestos and cadmium.

5.2 *Manufacture:*

5.2.1 Stowage boxes shall be constructed in accordance with figures appearing in this standard.

5.2.2 Welding shall be in accordance with ABS Rules for Building and Classing Steel Vessels or AWS D1.1 Structural Welding Code unless otherwise specified.

7.4 Gratings and covers shall be galvanized in accordance with Specification A 123.

8. **Keywords**

8.1 box; deck gear stowage boxes; locker; marine; marine stowage boxes; ship; stowage boxes

6. **Dimensions and Tolerances**

6.1 Dimensions are as indicated.

6.2 *Tolerance*—1.5 mm ($\pm 1/16$ in.).

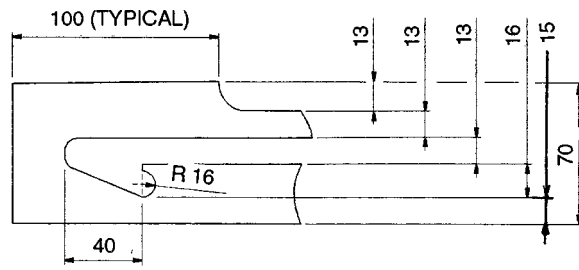
7. **Workmanship, Finish, and Appearance**

7.1 The entire assembly shall be free of weld spatter, slag, splinters, sharp edges, projections, and other defects that may be hazardous to personnel.

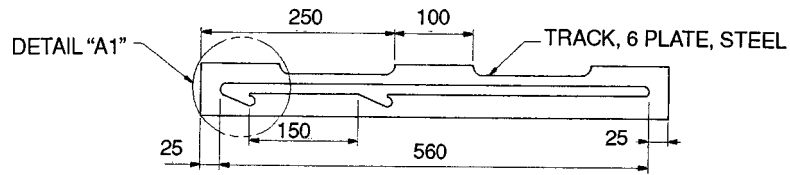
7.2 The box shall be cleaned after assembly to a commercial finish in accordance with SSPC-SP6.

7.3 All surfaces except gratings and covers shall be coated with one coat of commercial quality anti-corrosive, lead free, chromate free primer to a minimum dry film thickness of 50 μ m.

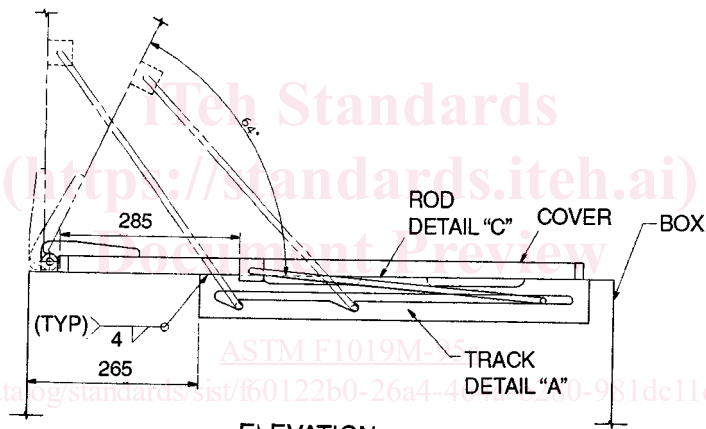
ASTM F 1019M



DETAIL "A1"



DETAIL "A"
TRACK



ELEVATION
FIG. 4 Cover Stay