



SLOVENSKI STANDARD
SIST EN 60745-2-14:2004/A1:2008
01-januar-2008

9`Y_fj bUfc bUfcX^U!`JUfbcgh!`&!% "XY.`DcgYVbY`nU H^j Y`nUg_cVY`b]_Y`f!97
 * \$+() !&!% .&\$ \$' #5 %&\$ \$* žgdfYa Yb^YbŁ

Hand-held motor-operated electric tools - Safety -- Part 2-14: Particular requirements for planers

Handgeführte motorbetriebene Elektrowerkzeuge - Sicherheit -- Teil 2-14: Besondere Anforderungen für Hobel

Outils électroportatifs à moteur - Sécurité -- Partie 2-14: Règles particulières pour les rabots

iteh STANDARD PREVIEW
(standards.iteh.ai)
<https://standards.iteh.ai/catalog/standards/sist/58c01723-6e91-41e2-9429-50875d5ae4e3/sist-en-60745-2-14-2004-a1-2008>

Ta slovenski standard je istoveten z: EN 60745-2-14:2003/A1:2007

ICS:

- | | | |
|-----------|-------------------------|-------------------|
| 25.140.20 | Ò\^ dā } æ ! [åæ | Electric tools |
| 79.120.20 | Lesnoobdelovalno orodje | Woodworking tools |

SIST EN 60745-2-14:2004/A1:2008 en

iTeh STANDARD PREVIEW
(standards.iteh.ai)

SIST EN 60745-2-14:2004/A1:2008

<https://standards.iteh.ai/catalog/standards/sist/58c01723-6e91-41e2-9429-50875d5ae4e3/sist-en-60745-2-14-2004-a1-2008>

**Hand-held motor-operated electric tools -
Safety -
Part 2-14: Particular requirements for planers
(IEC 60745-2-14:2003/A1:2006, modified)**

Outils électroportatifs à moteur -
Sécurité -
Partie 2-14: Règles particulières
pour les rabots
(CEI 60745-2-14:2003/A1:2006, modifié)

Handgeführte motorbetriebene
Elektrowerkzeuge -
Sicherheit -
Teil 2-14: Besondere Anforderungen
für Hobel
(IEC 60745-2-14:2003/A1:2006,
modifiziert)

**iTeh STANDARD PREVIEW
(standards.iteh.ai)**

SIST EN 60745-2-14:2004/A1:2008
http://standards.iteh.ai/catalog/standards/sist/38c91141-7c21-4e1a-9a2c-5b875dbacde3/sist-en-60745-2-14-2004-a1-2008
This amendment A1 modifies the European Standard EN 60745-2-14:2003: it was approved by CENELEC on 2007-02-01. CENELEC members are bound to comply with the CEN/CENELEC Internal Regulations which stipulate the conditions for giving this amendment the status of a national standard without any alteration.

Up-to-date lists and bibliographical references concerning such national standards may be obtained on application to the Central Secretariat or to any CENELEC member.

This amendment exists in three official versions (English, French, German). A version in any other language made by translation under the responsibility of a CENELEC member into its own language and notified to the Central Secretariat has the same status as the official versions.

CENELEC members are the national electrotechnical committees of Austria, Belgium, Bulgaria, Cyprus, the Czech Republic, Denmark, Estonia, Finland, France, Germany, Greece, Hungary, Iceland, Ireland, Italy, Latvia, Lithuania, Luxembourg, Malta, the Netherlands, Norway, Poland, Portugal, Romania, Slovakia, Slovenia, Spain, Sweden, Switzerland and the United Kingdom.

CENELEC

European Committee for Electrotechnical Standardization
Comité Européen de Normalisation Electrotechnique
Europäisches Komitee für Elektrotechnische Normung

Central Secretariat: rue de Stassart 35, B - 1050 Brussels

Foreword

The text of amendment 1:2006 to the International Standard IEC 60745-2-14:2003, prepared by SC 61F, Safety of hand-held motor-operated electric tools, of IEC TC 61, Safety of household and similar electrical appliances, together with common modifications prepared by the Technical Committee CENELEC TC 61F, Safety of hand-held and transportable motor-operated electric tools, was submitted to the Unique Acceptance Procedure and was approved by CENELEC as amendment A1 to EN 60745-2-14:2003 on 2007-02-01.

The following dates were fixed:

- latest date by which the amendment has to be implemented at national level by publication of an identical national standard or by endorsement (dop) 2008-02-01
- latest date by which the national standards conflicting with the amendment have to be withdrawn (dow) 2010-02-01

iTeh STANDARD PREVIEW (standards.iteh.ai)

SIST EN 60745-2-14:2004/A1:2008

<https://standards.iteh.ai/catalog/standards/sist/58c01723-6e91-41e2-9429-50875d5ae4e3/sist-en-60745-2-14-2004-a1-2008>

Endorsement notice

The text of amendment 1:2006 to the International Standard IEC 60745-2-14:2003 was approved by CENELEC as an amendment to the European Standard with agreed common modifications as given below.

COMMON MODIFICATIONS

19 Mechanical hazards

Add the following new subclause:

19.Z101 The cutter head shall be round shaped except for the part of the blades, the gullet width and clamping screws.

The maximum gullet width s in mm shall be

$$s_{\max} = 0,235 d + 7,2$$

where d is the cutting diameter. See Figure 101.

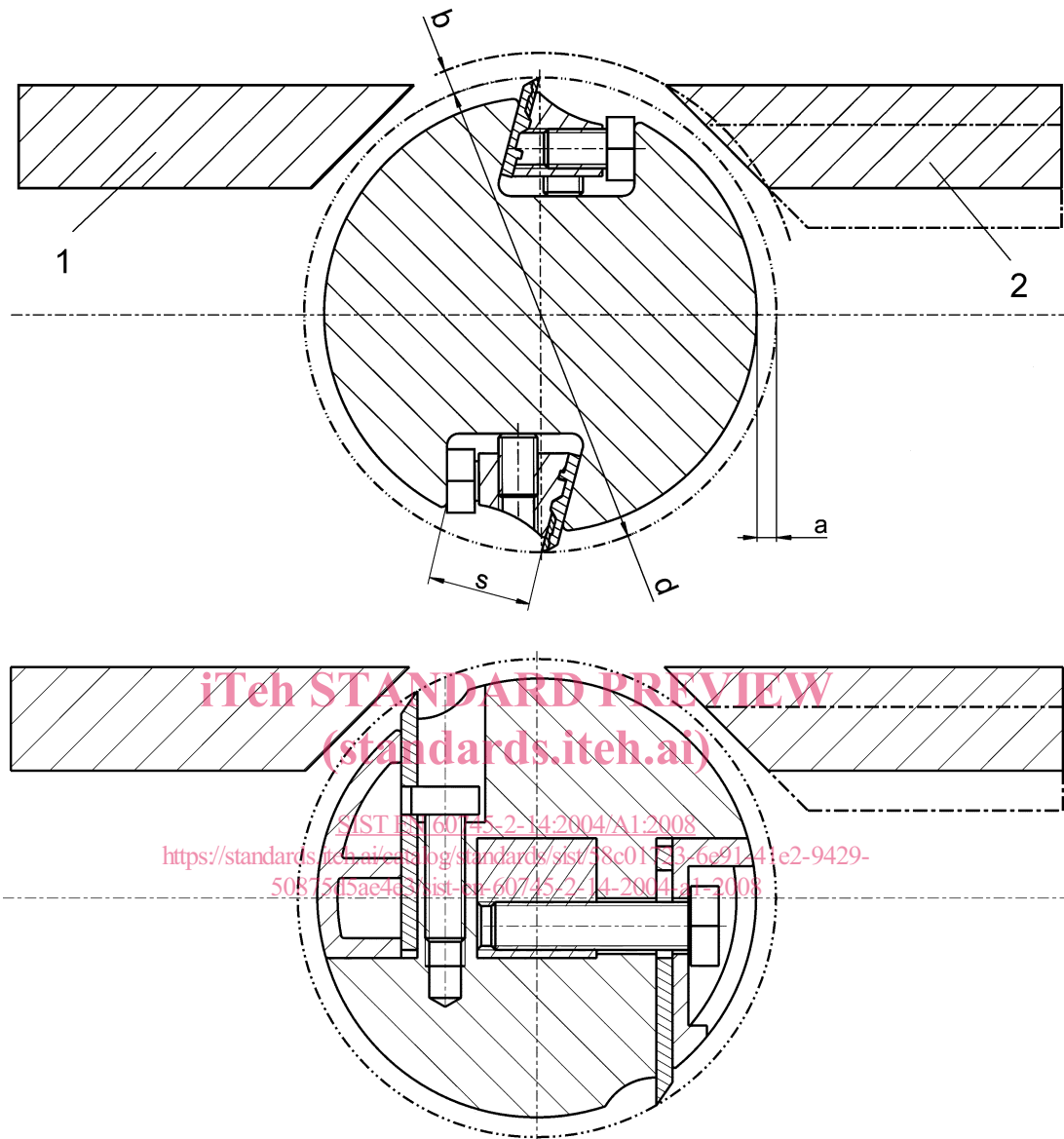
Compliance is checked by inspection and by measurement.

ITEH STANDARD PREVIEW
(standards.iteh.ai)

SIST EN 60745-2-14:2004/A1:2008

<https://standards.iteh.ai/catalog/standards/sist/58c01723-6e91-41e2-9429-50875d5ae4e3/sist-en-60745-2-14-2004-a1-2008>

Replace Figure 101 by:



Key

- 1 Fixed shoe
- 2 Adjustable shoe

Figure 101 – Examples of cutting heads with basic dimensions and clearance distances

NORME
INTERNATIONALE
INTERNATIONAL
STANDARD

CEI
IEC

60745-2-14

2003

AMENDEMENT 1
AMENDMENT 1
2006-04

Amendement 1

**Outils électroportatifs à moteur –
Sécurité –**

**Partie 2-14:
Règles particulières pour les rabots**
(standards.iteh.ai)

Amendment 1

[SIST EN 60745-2-14:2004/A1:2008](https://standards.iteh.ai/catalog/standards/sist-en-60745-2-14-2004-a1-2008)

<https://standards.iteh.ai/catalog/standards/sist-en-60745-2-14-2004-a1-2008>
**Hand-held motor-operated electric tools –
Safety –**

**Part 2-14:
Particular requirements for planers**

© IEC 2006 Droits de reproduction réservés — Copyright - all rights reserved

International Electrotechnical Commission, 3, rue de Varembé, PO Box 131, CH-1211 Geneva 20, Switzerland
Telephone: +41 22 919 02 11 Telefax: +41 22 919 03 00 E-mail: inmail@iec.ch Web: www.iec.ch



Commission Electrotechnique Internationale
International Electrotechnical Commission
Международная Электротехническая Комиссия

CODE PRIX
PRICE CODE

G

*Pour prix, voir catalogue en vigueur
For price, see current catalogue*

FOREWORD

This amendment has been prepared by subcommittee 61F: Safety of hand-held motor-operated electric tools, of IEC technical committee 61: Safety of household and similar electrical appliances.

The text of this amendment is based on the following documents:

FDIS	Report on voting
61F/633/FDIS	61F/642/RVD

Full information on the voting for the approval of this amendment can be found in the report on voting indicated in the above table.

The committee has decided that the contents of the base publication and its amendments will remain unchanged until the maintenance result date indicated on the IEC web site under "http://webstore.iec.ch" in the data related to the specific publication. At this date, the publication will be

- reconfirmed;
- withdrawn;
- replaced by a revised edition, or
- amended.

iTeh STANDARD PREVIEW
(standards.iteh.ai)

[SIST EN 60745-2-14:2004/A1:2008](https://standards.iteh.ai/catalog/standards/sist/58c01723-6e91-41e2-9429-50875d5ae4e3/sist-en-60745-2-14-2004-a1-2008)

3 Definitions <https://standards.iteh.ai/catalog/standards/sist/58c01723-6e91-41e2-9429-50875d5ae4e3/sist-en-60745-2-14-2004-a1-2008>

Add the following definition:

3.103

cutting head

assembly of blades, cutter block, blade fixing elements, relevant screws and spindle, the whole being ready for working

Replace the existing Clause 19 with the following:

19 Mechanical hazards

This clause of Part 1 is applicable except as follows:

19.1 Addition:

For the requirements given in 19.108, 19.109 and 19.110, only the test probe shown in Figure 102 is used.

19.101 The blades when aligned with the fixed shoe shall not project by more than 1,1 mm radially beyond the cutter block (as per dimension "a" in Figure 101).

Compliance is checked by measurement.

19.102 The distance “*b*” (see Figure 101) between the rotating circle of the cutting edges and the lips of the adjustable shoe shall not exceed 5 mm, from zero planing depth to the maximum adjustable planing depth.

Compliance is checked by measurement and by inspection.

19.103 The blades shall be secured in the cutter block in such a way that friction alone is not relied upon to prevent the ejection of the blades.

Compliance is checked by measurement and by inspection.

19.104 Cutting heads shall be designed and made of such materials that they withstand the forces and loads expected in normal use.

Compliance is checked by the following test:

An overspeed test shall be made on a sample cutting head, equipped with blades for the largest cutting diameter and the largest cutting edge width, the test speed being 1,5 times the rated no-load speed. If applicable, tension elements such as clamping screws shall be tightened in accordance with the instructions required by 8.12.2.

After the test, the cutting head shall not be deformed or cracked, no screws shall be loosened and displacements of detachable parts shall be less than specified in the test procedure.

The test procedure is as follows: (standards.iteh.ai)

- 1) *Measure the cutting head dimensions.*
- 2) *Bring the cutting head to the rated no-load speed, for 1 min.*
- 3) *Stop and re-measure the cutting head; measured displacements of the detachable parts of the cutting head shall not be greater than 0,15 mm.*
- 4) *Bring the cutting head to the test speed, for 1 min.*
- 5) *Stop and re-measure the cutting head and compare the results with those obtained from step 3. The compared displacements shall not exceed 0,15 mm.*

19.105 The clamping screws or other tensile loaded blade fixing elements used to secure the blades in the cutter block shall be made of steel with a hardness of at least 20 HRC and a tensile strength of at least 800 N/mm².

Clamping screws or bolts shall not project beyond the cutter block as shown in Figure 101.

Compliance is checked by verification of the material specification and by inspection.

19.106 It shall not be possible to touch rotating parts from the sides of the planer.

Compliance is checked by the following test:

The planer is positioned with the shoes resting on a flat surface. The accessibility of rotating parts is checked by means of the test probe shown in Figure 102.