



IEC/ISO/IEEE 80005-1



Edition 1.0 2012-07

# INTERNATIONAL STANDARD

Utility connections in port –  
Part 1: High Voltage Shore Connection (HVSC) Systems – General requirements

<https://standards.iteh.ai/catalog/standards/sist/0695820f-fa12-43b7-9303-4cc7cb31f044/iec-iso-ieee-80005-1-2012>

Withhold



## THIS PUBLICATION IS COPYRIGHT PROTECTED

Copyright © 2012 IEC/ISO/IEEE

All rights reserved. Unless otherwise specified, no part of this publication may be reproduced or utilized in any form or by any means, electronic or mechanical, including photocopying and microfilm, without permission in writing from IEC, ISO or IEEE at the respective address given below.

IEC Central Office  
3, rue de Varembe  
CH-1211 Geneva 20  
Switzerland  
Tel.: +41 22 919 02 11  
Fax: +41 22 919 03 00  
[info@iec.ch](mailto:info@iec.ch)  
[www.iec.ch](http://www.iec.ch)

ISO copyright office  
Case postale 56  
CH-1211 Geneva 20  
Switzerland  
Tel.: +41 22 749 01 11  
Fax: +41 22 749 09 47  
[copyright@iso.org](mailto:copyright@iso.org)  
[www.iso.org](http://www.iso.org)

Institute of Electrical and Electronics Engineers, Inc.  
3 Park Avenue  
New York, NY 10016-5997  
United States of America  
[stds.info@ieee.org](mailto:stds.info@ieee.org)  
[www.ieee.org](http://www.ieee.org)

### About the IEC

The International Electrotechnical Commission (IEC) is the leading global organization that prepares and publishes International Standards for all electrical, electronic and related technologies.

### About IEC publications

The technical content of IEC publications is kept under constant review by the IEC. Please make sure that you have the latest edition, a corrigenda or an amendment might have been published.

#### Useful links:

IEC publications search - [www.iec.ch/searchpub](http://www.iec.ch/searchpub)

The advanced search enables you to find IEC publications by a variety of criteria (reference number, text, technical committee,...).

It also gives information on projects, replaced and withdrawn publications.

IEC Just Published - [webstore.iec.ch/justpublished](http://webstore.iec.ch/justpublished)

Stay up to date on all new IEC publications. Just Published details all new publications released. Available on-line and also once a month by email.

Electropedia - [www.electropedia.org](http://www.electropedia.org)

The world's leading online dictionary of electronic and electrical terms containing more than 30 000 terms and definitions in English and French, with equivalent terms in additional languages. Also known as the International Electrotechnical Vocabulary (IEV) on-line.

Customer Service Centre - [webstore.iec.ch/csc](http://webstore.iec.ch/csc)

If you wish to give us your feedback on this publication or need further assistance, please contact the Customer Service Centre: [csc@iec.ch](mailto:csc@iec.ch).

<https://standards.iec.ch/secretariat/standards/sis/06/38/201/inf2-4367-9505-4cc7cb51f044/iec-iso-ieee-80045-1-2012>



IEC/ISO/IEEE 80005-1



Edition 1.0 2012-07

# INTERNATIONAL STANDARD

Utility connections in port –  
Part 1: High Voltage Shore Connection (HVSC) Systems – General requirements

<https://standards.iteh.ai/catalog/standards/sist/0693820f-fa12-43b7-9303-4cc7cb31f044/iec-iso-ieee-80005-1-2012>

INTERNATIONAL  
ELECTROTECHNICAL  
COMMISSION

PRICE CODE **XB**

ICS 47.020.60

ISBN 978-2-83220-111-4

**Warning! Make sure that you obtained this publication from an authorized distributor.**

## CONTENTS

FOREWORD.....	5
INTRODUCTION.....	7
1 Scope.....	8
2 Normative references.....	8
3 Terms and definitions.....	10
4 General requirements.....	11
4.1 System description.....	11
4.2 Distribution system.....	12
4.2.1 General.....	12
4.2.2 Equipotential bonding.....	12
4.3 Compatibility assessment before connection.....	12
4.4 HVSC system design and operation.....	13
4.4.1 System design.....	13
4.4.2 System operation.....	13
4.5 Personnel safety.....	13
4.6 Design requirements.....	13
4.6.1 General.....	13
4.6.2 Protection against moisture and condensation.....	13
4.6.3 Location and construction.....	13
4.6.4 Electrical equipment in areas where flammable gas or vapour and/or combustible dust may be present.....	14
4.7 Electrical requirements.....	14
4.8 System study and calculations.....	15
4.9 Emergency shutdown including emergency stop facilities.....	15
5 HV shore supply system requirements.....	17
5.1 Voltages and frequencies.....	17
5.2 Quality of HV shore supply.....	18
6 Shore side installation.....	19
6.1 General.....	19
6.2 System component requirements.....	19
6.2.1 Circuit-breaker, disconnector and earthing switch.....	19
6.2.2 Transformer.....	19
6.2.3 Neutral earthing resistor.....	20
6.2.4 Equipment earthing conductor bonding.....	20
6.3 Shore to ship electrical protection system.....	20
6.4 HV interlocking.....	21
6.4.1 General.....	21
6.4.2 Handling of HV plug/socket-outlets.....	21
6.4.3 Operating of the high-voltage (HV) circuit-breakers, disconnectors and earthing switches.....	21
6.5 Shore connection convertor equipment.....	22
6.5.1 General.....	22
6.5.2 Degree of protection.....	22
6.5.3 Cooling.....	22
6.5.4 Protection.....	23
7 Ship to shore connection and interface equipment.....	23

7.1	General .....	23
7.2	Cable management system .....	23
7.2.1	General .....	23
7.2.2	Monitoring of cable tension .....	24
7.2.3	Monitoring of the cable length .....	24
7.2.4	Connection conductor current unbalance protection .....	24
7.2.5	Equipotential bond monitoring .....	25
7.2.6	Slip ring units .....	25
7.3	Plugs and socket-outlets .....	25
7.3.1	General .....	25
7.3.2	Pilot contacts .....	26
7.3.3	Earth contact .....	26
7.3.4	Fibre optical plug/socket .....	26
7.4	Interlocking of earthing switches .....	26
7.5	Ship to shore connection cable .....	27
7.6	Independent control and monitoring cable .....	27
7.7	Storage .....	27
7.8	Data communication .....	27
8	Ship requirements .....	28
8.1	General .....	28
8.2	Ship electrical distribution system protection .....	28
8.2.1	Short-circuit protection .....	28
8.2.2	Earth fault protection, monitoring and alarm .....	28
8.3	Shore connection switchboard .....	28
8.3.1	General .....	28
8.3.2	Circuit-breaker, disconnecter and earthing switch .....	29
8.3.3	Instrumentation and protection .....	29
8.4	On board transformer .....	29
8.5	On board receiving switchboard connection point .....	30
8.5.1	General .....	30
8.5.2	Circuit-breaker and earthing switch .....	30
8.5.3	Instrumentation .....	30
8.5.4	Protection .....	30
8.5.5	Operation of the circuit-breaker .....	31
8.6	Ship power restoration .....	32
9	HVSC system control and monitoring .....	32
9.1	General requirements .....	32
9.2	Load transfer via blackout .....	33
9.3	Load transfer via automatic synchronization .....	33
9.3.1	General .....	33
9.3.2	Protection requirements .....	33
10	Verification and testing .....	33
10.1	General .....	33
10.2	Initial tests of shore side installation .....	34
10.2.1	General .....	34
10.2.2	Tests .....	34
10.3	Initial tests of ship side installation .....	34
10.3.1	General .....	34
10.3.2	Tests .....	34

10.4 Tests at the first call at a shore supply point.....	35
10.4.1 General .....	35
10.4.2 Tests .....	35
11 Periodic tests and maintenance .....	35
11.1 General .....	35
11.2 Tests at repeated calls of a shore supply point .....	36
11.2.1 General .....	36
11.2.2 Verification .....	36
12 Documentation .....	36
12.1 General .....	36
12.2 System description .....	36
Annex A (informative) Ship to shore connection cable.....	37
Annex B (normative) Additional requirements for Roll-on Roll-off (Ro-Ro) cargo ships and Ro-Ro passenger ships.....	42
Annex C (normative) Additional requirements for cruise ships.....	45
Annex D (normative) Additional requirements of container ships.....	51
Annex E (normative) Additional requirements of liquefied natural gas carriers (LNGC).....	55
Annex F (normative) Additional requirements for tankers.....	60
Bibliography.....	63
Figure 1 – Block diagram of a typical described HVSC system arrangement .....	11
Figure 2 – Phase sequence rotation – Positive direction .....	17
Figure 3 – Balanced three-phase variables in time domain .....	18
Figure A.1 – Bending test arrangement.....	41
Figure B.1 – Example for general system layout .....	42
Figure B.2 – Example of a safety circuit.....	43
Figure B.3 – Power plug and socket pin assignment .....	44
Figure C.1 – General system layout .....	45
Figure C.2 – Cruise ship HVSC system single line diagram.....	46
Figure C.3 – Example of safety and control circuit .....	47
Figure C.4 – Shore power connector pin assignment .....	49
Figure C.5 – The power inlet fitted with fail-safe limit switch .....	50
Figure D.1 – General system layout .....	51
Figure D.2 – Safety circuits.....	53
Figure D.3 – Power plug and socket pin assignment .....	54
Figure E.1 – General system layout .....	55
Figure E.2 – Power plug and socket pin assignment .....	58
Figure F.1 – General system layout .....	60
Figure F.2 – Power plug and socket pin assignment .....	61
Table E.1 – LNGC 140 000 – 225 000 m <sup>3</sup> .....	56
Table E.2 – LNGC > 225 000 m <sup>3</sup> .....	57

## UTILITY CONNECTIONS IN PORT –

### Part 1: High Voltage Shore Connection (HVSC) Systems – General requirements

#### FOREWORD

1) The International Electrotechnical Commission (IEC) is a worldwide organization for standardization comprising all national electrotechnical committees (IEC National Committees). The object of IEC is to promote international co-operation on all questions concerning standardization in the electrical and electronic fields. To this end and in addition to other activities, IEC publishes International Standards, Technical Specifications, Technical Reports, Publicly Available Specifications (PAS) and Guides (hereafter referred to as "IEC Publication(s)"). Their preparation is entrusted to technical committees; any IEC National Committee interested in the subject dealt with may participate in this preparatory work. International, governmental and non-governmental organizations liaising with the IEC also participate in this preparation.

ISO (the International Organization for Standardization) is a worldwide federation of national standards bodies (ISO member bodies). The work of preparing International Standards is normally carried out through ISO technical committees. Each member body interested in a subject for which a technical committee has been established has the right to be represented on that committee. International organizations, governmental and non-governmental, in liaison with ISO, also take part in the work. ISO collaborates closely with the International Electrotechnical Commission (IEC) on all matters of electrotechnical standardization.

IEEE Standards documents are developed within IEEE Societies and Standards Coordinating Committees of the IEEE Standards Association (IEEE-SA) Standards Board. IEEE develops its standards through a consensus development process, approved by the American National Standards Institute, which brings together volunteers representing varied viewpoints and interests to achieve the final product. Volunteers are not necessarily members of IEEE and serve without compensation. While IEEE administers the process and establishes rules to promote fairness in the consensus development process, IEEE does not independently evaluate, test, or verify the accuracy of any of the information contained in its standards. Use of IEEE Standards documents is wholly voluntary. IEEE documents are made available for use subject to important notices and legal disclaimers (see <http://standards.ieee.org/IPR/disclaimers.html> for more information).

IEC collaborates closely with ISO and IEEE in accordance with conditions determined by agreement between the organizations. This Triple Logo International Standard was jointly developed by the IEC, ISO and IEEE under the terms of that agreement.

- 2) The formal decisions of IEC on technical matters express, as nearly as possible, an international consensus of opinion on the relevant subjects since each technical committee has representation from all interested IEC National Committees. In the ISO, Draft International Standards adopted by the technical committees are circulated to the member bodies for voting. Publication as an International Standard requires approval by at least 75 % of the member bodies casting a vote. The formal decisions of IEEE on technical matters, once consensus within IEEE Societies and Standards Coordinating Committees has been reached, is determined by a balanced ballot of materially interested parties who indicate interest in reviewing the proposed standard. Final approval of the IEEE Standard document is given by the IEEE Standards Association (IEEE-SA) Standards Board.
- 3) IEC/ISO/IEEE Publications have the form of recommendations for international use and are accepted by IEC National Committees/ISO member bodies /IEEE Societies in that sense. While all reasonable efforts are made to ensure that the technical content of IEC/ISO/IEEE Publications is accurate, IEC, ISO or IEEE cannot be held responsible for the way in which they are used or for any misinterpretation by any end user.
- 4) In order to promote international uniformity, IEC National Committees undertake to apply IEC Publications (including IEC/ISO/IEEE Publications) transparently to the maximum extent possible in their national and regional publications. Any divergence between any IEC/ISO/IEEE Publication and the corresponding national or regional publication shall be clearly indicated in the latter.
- 5) IEC, ISO and IEEE do not provide any attestation of conformity. Independent certification bodies provide conformity assessment services and, in some areas, access to IEC marks of conformity. IEC, ISO and IEEE are not responsible for any services carried out by independent certification bodies.
- 6) All users should ensure that they have the latest edition of this publication.
- 7) No liability shall attach to IEC, ISO or IEEE or their directors, employees, servants or agents including individual experts and members of technical committees and IEC National Committees and ISO member bodies, or volunteers of IEEE Societies and the Standards Coordinating Committees of the IEEE Standards Association (IEEE-SA) Standards Board, for any personal injury, property damage or other damage of any nature whatsoever, whether direct or indirect, or for costs (including legal fees) and expenses arising out of the publication, use of, or reliance upon, this IEC/ISO/IEEE Publication or any other IEC, ISO or IEEE Publications.
- 8) Attention is drawn to the normative references cited in this publication. Use of the referenced publications is indispensable for the correct application of this publication.
- 9) Attention is drawn to the possibility that implementation of this IEC/ISO/IEEE Publication may require use of material covered by patent rights. By publication of this standard, no position is taken with respect to the existence or validity of any patent rights in connection therewith. IEC, ISO or IEEE shall not be held responsible for identifying Essential Patent Claims for which a license may be required, for conducting inquiries into the

legal validity or scope of Patent Claims or determining whether any licensing terms or conditions provided in connection with submission of a Letter of Assurance, if any, or in any licensing agreements are reasonable or non-discriminatory. Users of this standard are expressly advised that determination of the validity of any patent rights, and the risk of infringement of such rights, is entirely their own responsibility. Further information may be obtained from ISO or the IEEE Standards Association.

International Standard IEC/ISO/IEEE 80005-1 has been prepared by IEC technical committee 18: Electrical installations of ships and of mobile and fixed offshore units, in cooperation with IEC subcommittee 23H: Industrial plugs and socket-outlets, of IEC technical committee 23: Electrical accessories; ISO technical committee 8: Ships and marine technology, subcommittee 3: Piping and machinery; and IEEE IAS Petroleum and Chemical Industry Committee (PCIC) of the Industry Applications Society of the IEEE<sup>1</sup>.

This publication is published as an IEC/ISO/IEEE triple logo and prefix standard.

This document cancels and replaces IEC/PAS 60092-510 published in 2009.

A list of all the parts in the IEC 80005 series, published under the general title *Utility connections in port*, can be found on the IEC website.

The text of this standard is based on the following IEC documents:

FDIS	Report on voting
18/1254/FDIS	18/1268/RVD

Full information on the voting for the approvals of this standard can be found in the report on voting indicated in the above table. In ISO, the standard has been approved by 9 members out of 9 having a cast vote.

International standards are drafted in accordance with the rules given in the ISO/IEC Directives, Part 2.

The IEC Technical Committee, the ISO Technical Committee and IEEE Technical Committee have decided that the contents of this publication will remain unchanged until the stability date indicated on the IEC, ISO and IEEE web site in the data related to the specific publication. At this date, the publication will be

- reconfirmed
- withdrawn
- replaced by a revised edition, or
- amended.

<sup>1</sup> A list of IEEE participants can be found at the following URL:  
[http://standards.ieee.org/downloads/80005-1/80005-1-2012/80005-1-2012\\_wg-participants.pdf](http://standards.ieee.org/downloads/80005-1/80005-1-2012/80005-1-2012_wg-participants.pdf)



## INTRODUCTION

The following standard was developed jointly between IEC technical committee 18: Electrical installations of ships and of mobile and fixed offshore units, ISO technical committee 8: Ships and marine technology, subcommittee 3: Piping and machinery, and IEEE IAS PCIC Marine industry subcommittee.

For a variety of reasons, including environmental considerations, it is becoming an increasingly common requirement for ships to shut down ship generators and to connect to shore power for as long as practicable during stays in port. The scenario of receiving electrical power and other utilities from shore is historically known as “cold ironing”.

The intention of this standard is to define requirements that support, with the application of suitable operating practices, efficiency and safety of connections by compliant ships to compliant high-voltage shore power supplies through a compatible shore to ship connection.

With the support of sufficient planning, cooperation between ship and terminal facilities, and appropriate operating procedures and assessment, compliance with the requirements of this standard is intended to allow different ships to connect to high-voltage shore connections (HVSC) at different berths. This provides the benefits of standard, straightforward connection without the need for adaptation and adjustment at different locations that can satisfy the requirement to connect for as long as practicable during stays in port.

Ships that do not apply this standard may find it impossible to connect to compliant shore supplies.

Where deviations from the requirements and recommendations in this standard may be considered for certain designs, the potential effects on compatibility are highlighted.

Where the requirements and recommendations of this standard are complied with, high-voltage shore supplies arrangements are likely to be compatible for visiting ships for connection.

Clauses 1 to 12 are intended for application to all HVSC systems. They intend to address mainly the safety and effectiveness of HVSC systems with a minimum level of requirements that would standardise on one solution. This standard includes the requirement to complete a detailed compatibility assessment for each combination of ship and shore supply prior to a given ship arriving to connect to a given shore supply for the first time

Annex A includes cabling recommendations that should be used in HVSC systems.

The other annexes in this standard are ship specific annexes that include additional requirements related to agreed standardisation of solutions to achieve compatibility for compliant ships at different compliant berths and to address safety issues that are considered to be particular to that ship type. These annexes use the same numbering as Clauses 1 to 12 with an annex letter prefix. Hence, the numbering is not necessarily continuous. Where no additional requirements are identified, the clause is not shown.

It should be noted that Annex A is considered informative for the purposes of this document. This annex contains performance-based requirements for shore connection cable, and was developed by technical experts from a number of countries. IEC technical committee 18, subcommittee 18A and IEC technical committee 20 were consulted regarding cable requirements. It was determined that existing standards for cable can be used at this time and there is presently no need to develop a separate standard for shore connection cables.

## UTILITY CONNECTIONS IN PORT –

### Part 1: High Voltage Shore Connection (HVSC) Systems – General requirements

#### 1 Scope

This part of IEC 80005 describes high voltage shore connection (HVSC) systems, on board the ship and on shore, to supply the ship with electrical power from shore.

This standard is applicable to the design, installation and testing of HVSC systems and addresses:

- HV shore distribution systems;
- shore-to-ship connection and interface equipment;
- transformers/reactors;
- semiconductor/rotating convertors;
- ship distribution systems; and
- control, monitoring, interlocking and power management systems.

It does not apply to the electrical power supply during docking periods, e.g. dry docking and other out of service maintenance and repair.

Additional and/or alternative requirements may be imposed by national administrations or the authorities within whose jurisdiction the ship is intended to operate and/or by the owners or authorities responsible for a shore supply or distribution system.

It is expected that HVSC systems will have practicable applications for ships requiring 1 MW or more or ships with HV main supply.

Low-voltage shore connection systems are not covered by this standard.

#### 2 Normative references

The following documents, in whole or in part, are normatively referenced in this document and are indispensable for its application. For dated references, only the edition cited applies. For undated references, the latest edition of the referenced document (including any amendments) applies.

IEC 60034 (all parts), *Rotating electrical machines*

IEC 60076 (all parts), *Power transformers*

IEC 60079 (all parts), *Electrical apparatus for explosive gas atmospheres*

IEC 60092-101:2002, *Electrical installations in ships – Part 101: Definitions and general requirements*

IEC 60092-201:1994, *Electrical installations in ships – Part 201: System design – General*

IEC 60092-301:1995, *Electrical installations in ships – Part 301: Equipment – Generators and motors*

IEC 60092-502:1999, *Electrical installations in ships – Part 502: Tankers – Special features*

IEC 60092-503:2007, *Electrical installations in ships – Part 503: Special features – AC supply systems with voltages in the range of above 1 kV up to and including 15 kV*

IEC 60092-504:2001, *Electrical installations in ships – Part 504: Special features – Control and instrumentation*

IEC 60146-1 (all parts), *Semiconductor convertors – General requirements and line commutated convertors*

IEC 60204-11:2000, *Safety of machinery – Electrical equipment of machines – Part 11: Requirements for HV equipment for voltages above 1 000 V a.c. or 1 500 V d.c. and not exceeding 36 kV*

IEC 60332-1-2:2004, *Tests on electric and optical fibre cables under fire conditions – Part 1-2: Test for vertical flame propagation for a single insulated wire or cable – Procedure for 1 kW pre-mixed flame*

IEC 60502-2:2005, *Power cables with extruded insulation and their accessories for rated voltages from 1kV ( $U_m=7,2$  kV) up to 30 kV ( $U_m=36$  kV) – Part 2: Cables for rated voltages from 6 kV ( $U_m=7,2$  kV) up to 30 kV ( $U_m=36$  kV)*

IEC 60502-4:2005, *Power cables with extruded insulation and their accessories for rated voltages from 1 kV ( $U_m = 1,2$  kV) up to 30 kV ( $U_m = 36$  kV) – Part 4: Test requirements on accessories for cables with rated voltages from 6 kV ( $U_m = 7,2$  kV) up to 30 kV ( $U_m = 36$  kV)*

<https://standards.ieh.ai/standards/iec/60502-4-2005>  
IEC 60947-5-1:2003, *Low-voltage switchgear and controlgear – Part 5-1: Control circuit devices and switching elements – Electromechanical control circuit devices*

IEC 61363-1, *Electrical installations of ships and mobile and fixed offshore units – Part 1: Procedures for calculating short-circuit currents in three-phase a.c.*

IEC 61936-1:2002, *Power installations exceeding 1 kV a.c. – Part 1: Common rules*

IEC 62271-200:2003, *High-voltage switchgear and controlgear – Part 200: AC metal-enclosed switchgear and controlgear for rated voltages above 1 kV and up to and including 52 kV*

IEC 62613-1:2011, *Plugs, socket-outlets and ship couplers for high-voltage shore connection systems (HVSC systems) – Part 1: General Requirements*

IEC 62613-2:2011, *Plugs, socket-outlets and ship couplers for high-voltage shore connection systems (HVSC-systems) – Part 2: Dimensional compatibility and interchangeability requirements for accessories to be used by various types of ships*

SOLAS 2009, Chapter II-1/D, Regulations 42, 43 and 45

MIL-DTL-38999K, *General specification for connectors, electrical, circular, miniature, high density, quick disconnect (bayonet, threaded, and breech coupling), environment resistant, removable crimp and hermetic solder contacts*

MIL-STD-1560A, *Interface standard: Insert arrangements for MIL-C-38999 and MIL-C-27599 electrical, circular connectors*

MIL-PRF-29504/5C, *Performance specification sheet. Termini, fiber optic, connector, removable, environment resisting, socket terminus, size 16, rear release, MIL-DTL-38999, SERIES III*

### 3 Terms and definitions

For the purposes of this document, the following terms and definitions apply.

#### 3.1

##### **cable management system**

all equipment designed to control, monitor and handle the HV-flexible and control cables and their connection devices

#### 3.2

##### **equipotential bonding**

provision of electric connections between conductive parts, intended to achieve equipotentiality

[SOURCE: IEC 60050-195:1998, 195-01-10]

#### 3.3

##### **emergency shutdown-1**

##### **ESD-1**

shutdown initiated when the ship moves past the warning range of allowable motion forward, aft or outward from the dock, and which initiates an LNG-ESD signal from shore to ship

#### 3.4

##### **emergency shutdown-2**

##### **ESD-2**

shutdown initiated when the ship moves past the maximum range of allowable motion forward, aft or outward from the dock, and which initiates loading arm disconnection on shore

#### 3.5

##### **high voltage**

##### **HV**

nominal voltage in range above 1 000 V a.c. and up to and including 15 kV a.c.

#### 3.6

##### **liquefied natural gas-emergency shutdown**

##### **LNG-ESD**

type of emergency shutdown defined at LNG terminals

#### 3.7

##### **low voltage**

##### **LV**

nominal voltage up to and including 1 000 V a.c.

#### 3.8

##### **person in charge**

##### **PIC**

individual responsible for HVSC systems operations

#### 3.9

##### **pilot contact**

contact of the plug and socket-outlet which signals correct plug connection and is a safety-related component

**3.10****receiving point**

connection point of the flexible cable on the ship

**3.11****safe**

condition in which safety risks are minimized to an acceptable level

**3.12****supply point**

connection point of the flexible cable on shore

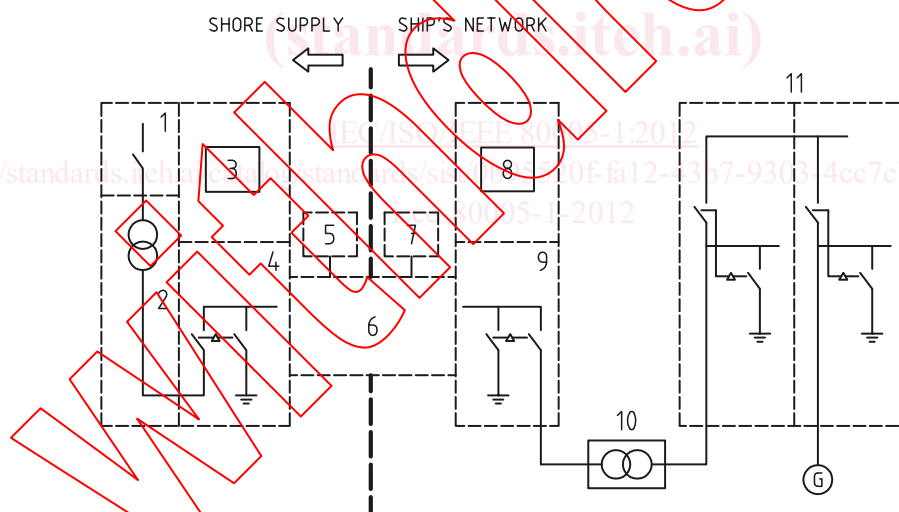
**3.13****fail safe**

design property of an item which prevents its failures from resulting in critical faults

[SOURCE: IEC 60050-195:1998, 191-15-04]

**4 General requirements****4.1 System description**

A typical HVSC system described in this standard consists of hardware components as shown in Figure 1.

**KEY**

- |   |   |
|---|---|
| 1. HV-SHORE SUPPLY SYSTEM                           | 7. CONTROL                                  |
| 2. SHORE SIDE TRANSFORMER                           | 8. SHIP PROTECTION RELAYING                 |
| 3. SHORE SIDE PROTECTION RELAYING                   | 9. SHORE CONNECTION SWITCHBOARD             |
| 4. SHORE SIDE CIRCUIT BREAKER AND EARTH SWITCH      | 10. ON-BOARD TRANSFORMER (WHERE APPLICABLE) |
| 5. CONTROL  | 11. ON-BOARD RECEIVING SWITCHBOARD          |
| 6. SHORE-TO-SHIP CONNECTION AND INTERFACE EQUIPMENT |   |

**Figure 1 – Block diagram of a typical described HVSC system arrangement**

## 4.2 Distribution system

### 4.2.1 General

Typical distribution systems used on shore are given in IEC 61936-1. Typical ship distribution systems are given in IEC 60092-503.

NOTE IEEE Std 45™ provides additional information on typical ship distribution systems.

### 4.2.2 Equipotential bonding

An equipotential bonding between the ship's hull and shore earthing electrode shall be established.

Verification of the equipotential bonding shall be a part of the safety circuit (see 7.2.5). Loss of equipotential bonding shall result in the shutdown of the HVSC system, and the ship shall go into ship power restoration mode (see 8.6).

NOTE The terms earth(ing) and ground(ing) are used interchangeably throughout this standard and have the same meaning (see IEC 60050-195:1998, 195-01-08).

## 4.3 Compatibility assessment before connection

Compatibility assessment shall be performed to verify the possibility to connect the ship to shore HV supply. Compatibility assessment shall be performed prior to the first arrival at a terminal.

Assessment of compatibility shall be performed to determine the following:

- a) compliance with the requirements of this standard and any deviations from the recommendations;
- b) minimum and maximum prospective short-circuit current (see 4.7 and 4.8);
- c) nominal ratings of the shore supply, ship to shore connection and ship connection (see 5.1);
- d) any de-rating for cable coiling or other factors (see 7.2.1);
- e) acceptable voltage variations at ship switchboards between no-load and nominal rating (see 5.2);
- f) steady state and transient ship load demands when connected to a HV shore supply, HV shore supply response to step changes in load (see 5.2);
- g) system study and calculations (see 4.8);
- h) verification of ship equipment impulse withstand voltage;
- i) compatibility of shore and ship side control voltages, where applicable;
- j) compatibility of communication link;
- k) distribution system compatibility assessment (shore power transformer neutral earthing);
- l) functioning of ship earth fault protection, monitoring and alarms when connected to a HVSC supply (see 8.2.2);
- m) sufficient cable length;
- n) compatibility of safety circuits, in accordance with 9.1;
- o) total harmonic distortion (THD) (see 5.2);
- p) consideration of hazardous areas, where applicable (see 4.6.4);
- q) when a HV supply system is connected, consideration shall be given to provide means to reduce current in-rush and/or inhibit the starting of large loads that would result in failure, overloading or activation of automatic load reduction measures;
- r) consideration of electrochemical corrosion due to equipotential bonding;

- s) utility interconnection requirements for load transfer parallel connection; and
- t) equipotential bond monitoring.

#### **4.4 HVSC system design and operation**

##### **4.4.1 System design**

The design and construction shall be integrated and coordinated among the parties responsible for shore and ship HVSC systems.

System integration of shore and ship HVSC systems shall be managed by a single designated party and shall be performed in accordance with a defined procedure identifying the roles, responsibilities and requirements of all parties involved.

##### **4.4.2 System operation**

During the operation of HVSC systems, PIC(s) shall be identified at the shore facility and on board the ship for the purposes of communication.

The PIC(s) shall be provided with sufficient information, instructions, tools and other resources for safety and efficiency of these activities.

#### **4.5 Personnel safety**

Construction of the HV equipment and operating safety procedures shall provide for the safety of personnel during the establishment of the connection of the ship supply, during all normal operations, in the event of a failure, during disconnection and when not in use.

The use of the term “safe” is not intended to suggest or guarantee that absolute safety can be achieved in any situation and/or by compliance with the recommended practices set forth herein. The use of terms such as “safe,” “inherently safe,” “electrically safe work practices,” “safe work condition,” “safe work environment,” “safe design,” “safe distance,” “safe work method,” “safe work area,” “safe use,” etc. describe practices, conditions, etc. in which safety risks are minimized but not eliminated absolutely, such that safety is not guaranteed.

#### **4.6 Design requirements**

##### **4.6.1 General**

Protection and safety systems shall be designed based on the fail safe principle.

Suitable warning notices shall be provided at locations along connection equipment routes including connection locations.

##### **4.6.2 Protection against moisture and condensation**

Effective means shall be provided to prevent accumulation of moisture and condensation, even if equipment is idle for appreciable periods.

##### **4.6.3 Location and construction**

HVSC equipment shall be installed in access controlled spaces.

Equipment shall be suitable for the environment conditions in the space(s) where it is expected to operate. Ship equipment shall comply with the applicable requirements of IEC 60092-101 and IEC 60092-503.