



SLOVENSKI STANDARD
SIST ETS 300 533 E1:2003

01-december-2003

9 j fcdg]`X][]Hb]`W`] b]`h`Y`_ca i b]`U`V`g`]`g]ghYa `fZJhU`&L`E`H`M` b]` bUfYU]nU`V`U`
nUdcfžc`_`U`h`f`]` `c`X`c` U`c`V`f`U`h`c`j` U`Y`W`f`i` GA` '\$` '°`ž` Ł`

European digital cellular telecommunications system (Phase 2); Technical realization of operator determined barring (GSM 03.15)

iTeh STANDARD PREVIEW
(standards.iteh.ai)

Ta slovenski standard je istoveten z: **ETS 300 533 Edition 1**
<https://standards.iteh.ai/catalog/standards/sist/84fc5bad-7dba-413d-90f0-b302d4739889/sist-ets-300-533-e1-2003>

ICS:

33.070.50	Globalni sistem za mobilno telekomunikacijo (GSM)	Global System for Mobile Communication (GSM)
-----------	---------------------------------------------------	----------------------------------------------

SIST ETS 300 533 E1:2003

en

iTeh STANDARD PREVIEW
(standards.iteh.ai)

[SIST ETS 300 533 E1:2003](#)

<https://standards.iteh.ai/catalog/standards/sist/84fe5bad-7dba-413d-90f0-b302d4739889/sist-ets-300-533-e1-2003>



EUROPEAN
TELECOMMUNICATION
STANDARD

ETS 300 533

September 1994

Source: ETSI TC-SMG

Reference: GSM 03.15

ICS: 33.060.30

Key words: European digital cellular telecommunications system, Global System for Mobile communications (GSM)

iTeh STANDARD PREVIEW
(standards.itih.ai)
European digital cellular telecommunications system (Phase 2);
Technical realization of operator determined barring

[SIST ETS 300.533 E1:2003](https://standards.itih.ai/catalog/standards/sist/300-533-e1-2003)
<https://standards.itih.ai/catalog/standards/sist/300-533-e1-2003>
(GSM 03.15)
[7dba-413d-90f0-b302d4739889/sist-ets-300-533-e1-2003](https://standards.itih.ai/catalog/standards/sist/300-533-e1-2003)

ETSI

European Telecommunications Standards Institute

ETSI Secretariat

Postal address: F-06921 Sophia Antipolis CEDEX - FRANCE

Office address: 650 Route des Lucioles - Sophia Antipolis - Valbonne - FRANCE

X.400: c=fr, a=atlas, p=etsi, s=secretariat - **Internet:** secretariat@etsi.fr

Tel.: +33 92 94 42 00 - Fax: +33 93 65 47 16

Copyright Notification: No part may be reproduced except as authorized by written permission. The copyright and the foregoing restriction extend to reproduction in all media.

© European Telecommunications Standards Institute 1994. All rights reserved.

iTeh STANDARD PREVIEW (standards.iteh.ai)

[SIST ETS 300 533 E1:2003](https://standards.iteh.ai/catalog/standards/sist/84fe5bad-7dba-413d-90f0-b302d4739889/sist-ets-300-533-e1-2003)

<https://standards.iteh.ai/catalog/standards/sist/84fe5bad-7dba-413d-90f0-b302d4739889/sist-ets-300-533-e1-2003>

Contents

Foreword	5
1 General.....	7
1.1 Scope.....	7
1.2 Normative references	7
1.3 Definitons and abbreviations.....	7
2 Method of realisation	7
2.1 Barring of Outgoing Calls or Mobile Originated Short Messages	7
2.1.1 Application or Change of Barring in the HLR	8
2.1.2 Invocation of Barring	8
2.2 Barring of Incoming Calls or Mobile Terminated Short Messages	9
2.2.1 Application or Change of Barring in the HLR	9
2.2.2 Invocation of Barring	9
2.3 Barring of Roaming.....	11
2.3.1 Application or Change of Barring in the HLR	11
2.3.2 Invocation of Barring	11
2.4 Barring of Supplementary Services Management	12
2.4.1 Application or Change of Barring in the HLR	12
2.4.2 Invocation of Barring	12
2.4.3 Operator Determined Barring of access to supplementary service not supported in VLR.....	14
2.5 Interactions of Operator Determined Barring with Supplementary Services	15
2.5.1 Call Forwarding	15
2.5.2 Closed User Group.....	17
2.5.3 Call Barring.....	17
3 Information stored in location registers.....	17
3.1 Information stored in the HLR.....	17
3.2 Information stored in the VLR.....	18
3.3 Transfer of Subscription Information	18
History.....	19

Blank page

iTeh STANDARD PREVIEW
(standards.iteh.ai)

[SIST ETS 300 533 E1:2003](https://standards.iteh.ai/catalog/standards/sist/84fe5bad-7dba-413d-90f0-b302d4739889/sist-ets-300-533-e1-2003)

<https://standards.iteh.ai/catalog/standards/sist/84fe5bad-7dba-413d-90f0-b302d4739889/sist-ets-300-533-e1-2003>

Foreword

This European Telecommunication Standard (ETS) has been produced by the Special Mobile Group (SMG) Technical Committee (TC) of the European Telecommunications Standards Institute (ETSI).

This ETS defines the technical realization of operator determined barring for the European digital cellular telecommunications system (Phase 2). This ETS corresponds to GSM Technical Specification (GSM-TS) GSM 03.15 version 4.3.1.

The specification from which this ETS has been derived was originally based on CEPT documentation, hence the presentation of this ETS may not be entirely in accordance with the ETSI/PNE rules.

Reference is made within this ETS to GSM-TSs (NOTE).

NOTE: TC-SMG has produced documents which give the technical specifications for the implementation of the European digital cellular telecommunications system. Historically, these documents have been identified as GSM Technical Specifications (GSM-TSs). These TSs may have subsequently become I-ETTs (Phase 1), or ETSS (Phase 2), whilst others may become ETSI Technical Reports (ETRs). GSM-TSs are, for editorial reasons, still referred to in GSM ETSS.

iTeh STANDARD PREVIEW (standards.iteh.ai)

[SIST ETS 300 533 E1:2003](https://standards.iteh.ai/catalog/standards/sist/84fe5bad-7dba-413d-90f0-b302d4739889/sist-ets-300-533-e1-2003)

<https://standards.iteh.ai/catalog/standards/sist/84fe5bad-7dba-413d-90f0-b302d4739889/sist-ets-300-533-e1-2003>

Blank page

iTeh STANDARD PREVIEW
(standards.iteh.ai)

[SIST ETS 300 533 E1:2003](https://standards.iteh.ai/catalog/standards/sist/84fe5bad-7dba-413d-90f0-b302d4739889/sist-ets-300-533-e1-2003)

<https://standards.iteh.ai/catalog/standards/sist/84fe5bad-7dba-413d-90f0-b302d4739889/sist-ets-300-533-e1-2003>

1 General

1.1 Scope

The network feature Operator Determined Barring allows a network operator or service provider to regulate access by subscribers to GSM services, by the barring of certain categories of incoming or outgoing traffic or of roaming. Operator Determined Barring applies to all bearer services and teleservices except the Emergency Call teleservice; the teleservice Short Message Point-to-Point is therefore subject to Operator Determined Barring in the same way as circuit-switched calls.

The application of specific categories of Operator Determined Barring to a subscription is controlled by the network operator or service provider, using administrative interaction at the HLR; this interface is not standardised.

1.2 Normative references

This ETS incorporates by dated and undated reference, provisions from other publications. These normative references are cited at the appropriate places in the text and the publications are listed hereafter. For dated references, subsequent amendments to or revisions of any of these publications apply to this ETS only when incorporated in it by amendment or revision. For undated references, the latest edition of the publication referred to applies.

- [1] GSM 01.04 (ETR 100): "European digital cellular telecommunications system (Phase 2); Abbreviations and acronyms".
- [2] GSM 02.41 (prETS 300 513): "European digital cellular telecommunications system (Phase 2); Operator determined barring".
- [3] GSM 03.40 (prETS 300 536): "European digital cellular telecommunications system (Phase 2); Technical realization of the Short Message Service (SMS) Point to Point (PP)".

1.3 Definitions and abbreviations

<https://standards.iteh.ai/catalog/standards/sist/84fe5bad-7dba-413d-90f0-b302d4739889/sist-ets-300-533-e1-2003>

Abbreviations used in this specification are listed in GSM 01.04.

2 Method of realisation

The GSM entities which control the application of Operator Determined Barring, and the methods used, are described in this section. Two cases are considered for each type of barring: the effect of administrative action in the HLR to modify the application of the category to a particular subscription, and the effect of the category on the handling of calls or other traffic involving the subscriber.

2.1 Barring of Outgoing Calls or Mobile Originated Short Messages

Barring of outgoing calls or mobile originated short messages includes the categories 'outgoing calls' and 'outgoing premium rate calls' defined in GSM 02.41, and the 'operator specific barring' category where this is defined by the PLMN operator to apply to outgoing calls or mobile originated short messages.

2.1.1 Application or Change of Barring in the HLR

If barring of outgoing calls or mobile originated short messages is applied to a subscription (or existing barring of outgoing calls or mobile originated short messages is modified or removed) by administrative action in the HLR, the HLR will update the subscription information accordingly, and transfer the updated subscription information to the VLR using one or more Insert Subscriber Data operations, as shown in figure 1.

If operator specific barring is applied to a subscription (or existing operator specific barring is modified or removed) by administrative action in the HLR, the HLR will update the subscription information accordingly. If the mobile subscriber is registered in the home PLMN, the HLR will transfer the updated subscription information to the VLR using one or more Insert Subscriber Data operations, as shown in figure 1.

If the VPLMN does not support Operator Determined Barring of outgoing calls, the VLR shall indicate this in the acknowledgement of the Insert Subscriber Data message. The HLR shall then, as an operator option, apply the Outgoing Calls Barred supplementary service, apply barring of roaming as described in section 2.3 or take any other action decided by the operator of the HPLMN.

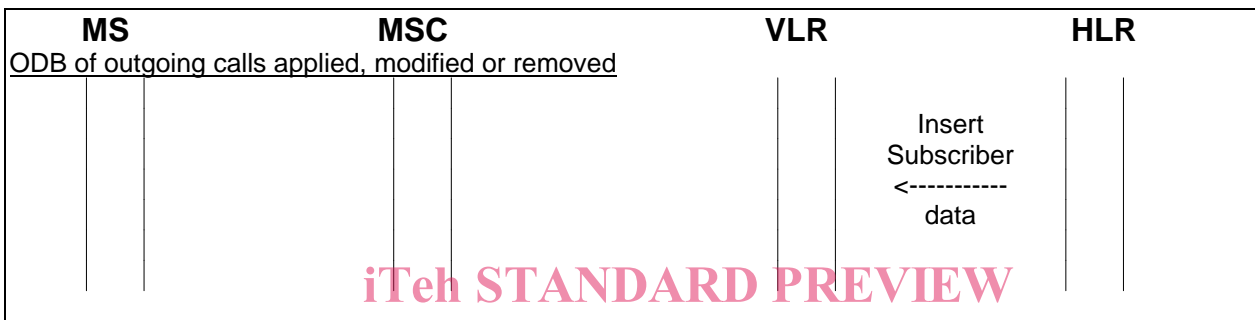


Figure 1: Transfer of updated subscription information to VLR

2.1.2 Invocation of Barring

<https://standards.iteh.ai/catalog/standards/sist/84fe5bad-7dba-413d-90f0-b302d4739889/sist-ets-300-533-e1-2003>

Barring of outgoing calls or mobile originated short messages is invoked in the VLR. If the VLR receives a request for subscription information for an outgoing call or mobile originated short message which is prohibited by Operator Determined Barring, the VLR will return a negative response to the request for subscription information, with an appropriate error indication. The MSC may relay this error indication via the BSS to the mobile station over the radio path, or (in the case of an outgoing call) may connect the mobile station to an address to be determined by the network operator.

Barring of all international calls, barring of all international calls except those directed to the home PLMN country, barring of all premium rate (information) calls or barring of all premium rate (entertainment) calls requires the VLR to analyse the called number to determine whether the requested call is barred.

Barring of all outgoing calls when roaming outside the home PLMN country requires the HLR to determine whether a request for location updating originates from a PLMN outside the home PLMN country. If the request does originate from a PLMN outside the home PLMN country, the HLR will transfer subscription information to the VLR to indicate that the mobile station is subject to barring of all outgoing calls.

Operator Specific Barring may apply to outgoing or incoming calls, or mobile originated or mobile terminated short messages; if it applies to outgoing calls or mobile originated short messages, it is invoked in the VLR, as described above. If the barring applies to calls directed to a specific class of destination, the VLR must analyse the called number to determine whether the requested call is barred.

An indicative message flow diagram for the handling of Operator Determined Barring of outgoing calls or mobile originated short messages is given in figure 2. For the case where the mobile station is connected to an address determined by the network operator, this address is assumed to be directly connected to the MSC, so that no inter-MSC signalling is required.

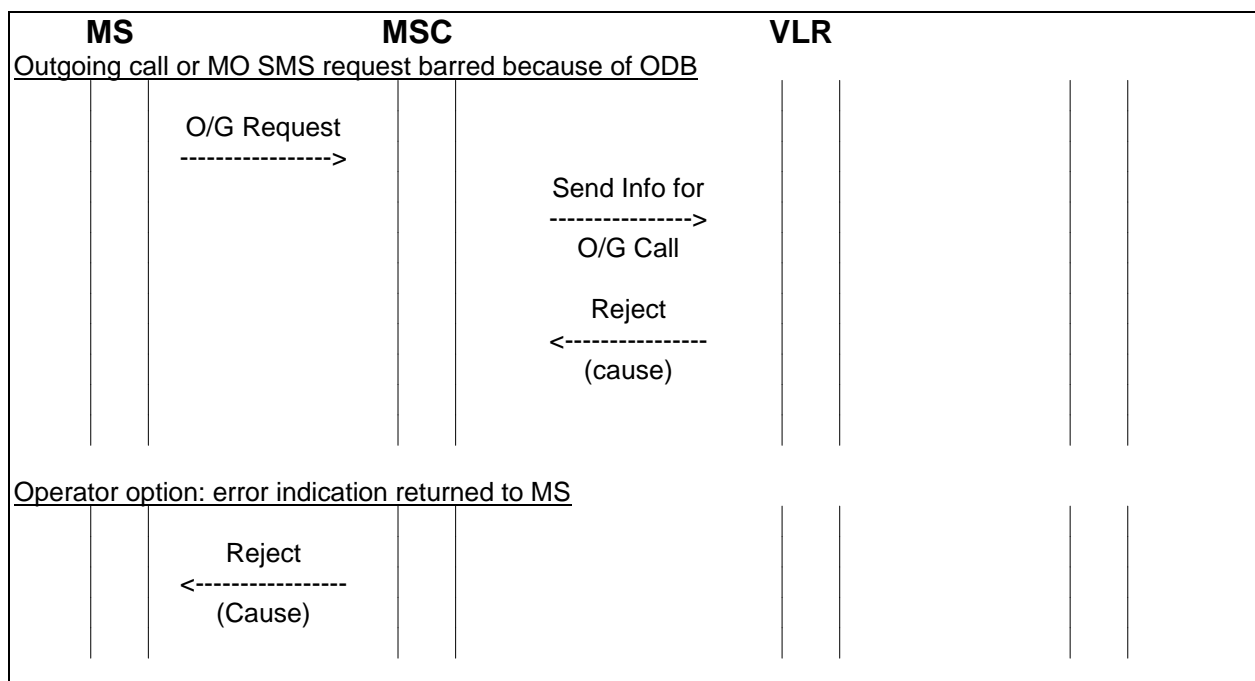


Figure 2: Operator Determined Barring of Outgoing Calls or Mobile Originated Short Messages

2.2 Barring of Incoming Calls or Mobile Terminated Short Messages

2.2.1 Application or Change of Barring in the HLR

If barring of incoming calls or mobile terminated short messages is applied to a subscription (or existing barring of incoming calls or mobile terminated short messages is modified or removed) by administrative action in the HLR, the HLR will update the subscription information accordingly. It is not necessary to transfer the updated subscription information to the VLR.

2.2.2 Invocation of Barring

Barring of incoming calls is invoked in the HLR. If the HLR receives a request for routing information for a call directed to a mobile station which is subject to barring of incoming calls, the HLR will return a negative response to the request for routing information, with an appropriate error indication. The Gateway MSC may relay this error indication to the originating network using the appropriate telephony signalling system, or may connect the call to a recorded announcement to be determined by the network operator.

Barring of mobile terminated short messages is invoked in the HLR. If the HLR receives a request for routing information for a short message directed to a mobile station which is subject to barring of incoming calls, the HLR will return a negative response to the request for routing information, with an appropriate error indication. This error indication will be relayed to the originating Short Message service centre by the Gateway MSC using the protocol defined in GSM 03.40.

Operator Specific Barring may apply to outgoing or incoming calls, or mobile originated or mobile terminated short messages; if it applies to incoming calls or mobile terminated short messages, it is invoked in the HLR, as described above.

An indicative message flow diagram for the handling of Operator Determined Barring of incoming calls is given in figure 3. For the case where the call is connected to an address determined by the network operator, this address is assumed to be directly connected to the GMSC, so that no inter-MSC signalling is required.