

SLOVENSKI

**SIST EN 60335-2-
31:2003/oprA1:2005**

PREDSTANDARD

junij 2005

Gospodinjski in podobni električni aparati - Varnost - 2-31. del: Posebne zahteve za kuhinjske nape

Household and similar electrical appliances - Safety - Part 2-31: Particular requirements for range hoods

ICS 13.120; 97.040.20

Referenčna številka
SIST EN 60335-2-
31:2003/oprA1:2005(en)



61/2866/CDV

COMMITTEE DRAFT FOR VOTE (CDV) PROJET DE COMITÉ POUR VOTE (CDV)

Project number IEC 60335-2-31-A1 Ed 4.0 Numéro de projet			
IEC/TC or SC: TC 61 CEI/CE ou SC:	Date of circulation Date de diffusion 2005-04-22	Closing date for voting (Voting mandatory for P-members) Date de clôture du vote (Vote obligatoire pour les membres (P)) 2005-09-23	
Titre du CE/SC: Sécurité des appareils électrodomestiques et analogues <input type="checkbox"/>		TC/SC Title: Safety of household and similar electrical appliances <input type="checkbox"/>	
Secretary: Mr A. P. Brazauski, U.S.A. <input type="checkbox"/> Secrétaire:			
Also of interest to the following committees Intéresse également les comités suivants		Supersedes document Remplace le document 61/2849/MCR	
Functions concerned Fonctions concernées			
<input checked="" type="checkbox"/> Safety Sécurité	<input type="checkbox"/> EMC CEM	<input type="checkbox"/> Environment Environnement	<input type="checkbox"/> Quality assurance Assurance qualité

CE DOCUMENT EST TOUJOURS À L'ÉTUDE ET SUSCEPTIBLE DE MODIFICATION. IL NE PEUT SERVIR DE RÉFÉRENCE.

LES RÉCIPIENDAIRES DU PRÉSENT DOCUMENT SONT INVITÉS À PRÉSENTER, AVEC LEURS OBSERVATIONS, LA NOTIFICATION DES DROITS DE PROPRIÉTÉ DONT ILS AURAIENT ÉVENTUELLEMENT CONNAISSANCE ET À FOURNIR UNE DOCUMENTATION EXPLICATIVE.

THIS DOCUMENT IS STILL UNDER STUDY AND SUBJECT TO CHANGE. IT SHOULD NOT BE USED FOR REFERENCE PURPOSES.

RECIPIENTS OF THIS DOCUMENT ARE INVITED TO SUBMIT, WITH THEIR COMMENTS, NOTIFICATION OF ANY RELEVANT PATENT RIGHTS OF WHICH THEY ARE AWARE AND TO PROVIDE SUPPORTING DOCUMENTATION.

Titre : CEI 60335-2-31-A1 Ed 4.0: Partie 2-31: Règles particulières pour les hottes de cuisine

Title : IEC 60335-2-31-A1 Ed. 4.0: Household and similar electrical appliances - Safety - Part 2-31: Particular requirements for range hoods

: Note d'introduction

Ce document est diffusé conformément à la décision prise à la réunion du TC 61 de

Toulouse – voir 61/2568/RM.

Historique:

61/2423/DC	61/2552A/INF
------------	--------------

Introductory note

This document is circulated according to the decision taken at the meeting of TC 61 in

Toulouse – see 61/2568/RM.

History:

61/2423/DC	61/2552A/INF
------------	--------------

ATTENTION

**CDV soumis en parallèle au vote (CEI)
et à l'enquête (CENELEC)**

ATTENTION

Parallel IEC CDV/CENELEC Enquiry

Copyright © 2005 International Electrotechnical Commission, IEC. All rights reserved. It is permitted to download this electronic file, to make a copy and to print out the content for the sole purpose of preparing National Committee positions. You may not copy or "mirror" the file or printed version of the document, or any part of it, for any other purpose without permission in writing from IEC.

FOREWORD

This amendment has been prepared by IEC technical committee 61: Safety of household and similar electrical appliances.

The text of this amendment is based on the following documents:

FDIS	Report on voting
61/XXXX/FDIS	61/XXXX/RVD

Full information on the voting for the approval of this amendment can be found in the report on voting indicated in the above table.

The committee has decided that the contents of this amendment and the base publication will remain unchanged until the maintenance result date¹⁾ indicated on the IEC web site under "<http://webstore.iec.ch>" in the data related to the specific publication. At this date, the publication will be

- reconfirmed;
- withdrawn;
- replaced by a revised edition, or
- amended.

CONTENTS

Add the following:

Figure 101 – Hob layout for the heating test

INTRODUCTION

Replace the second sentence of the second paragraph by the following:

It also covers abnormal situations that can be expected in practice and takes into account the way in which electromagnetic phenomena can affect the safe operation of appliances.

¹⁾ The National Committees are requested to note that for this publication the maintenance result date is 200X.

11 Heating

11.2 *Replace the third paragraph by the following:*

*If the **range hood** is intended to be installed over a hob having four electric hob elements or gas burners, the hob shall have two 2 kW electric elements at the back and two 1,5 kW electric elements at the front.*

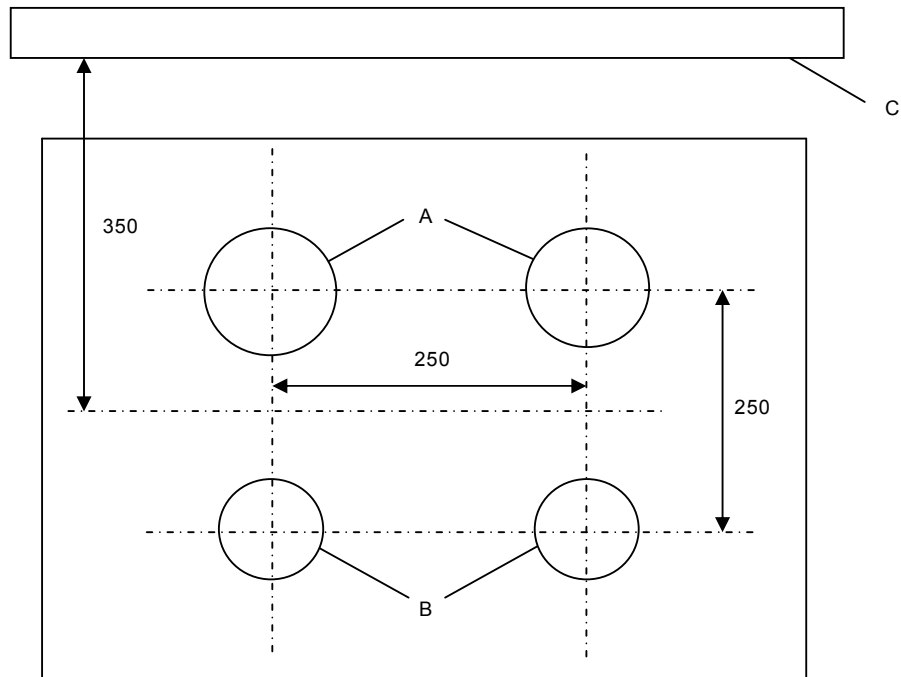
*If the **range hood** is intended to be installed over a hob having six electric hob elements or gas burners, the hob shall have three 2 kW electric elements at the back and three 1,5 kW electric elements at the front.*

NOTE 101 The layout of the hobs used in the tests is shown in Figure 101.

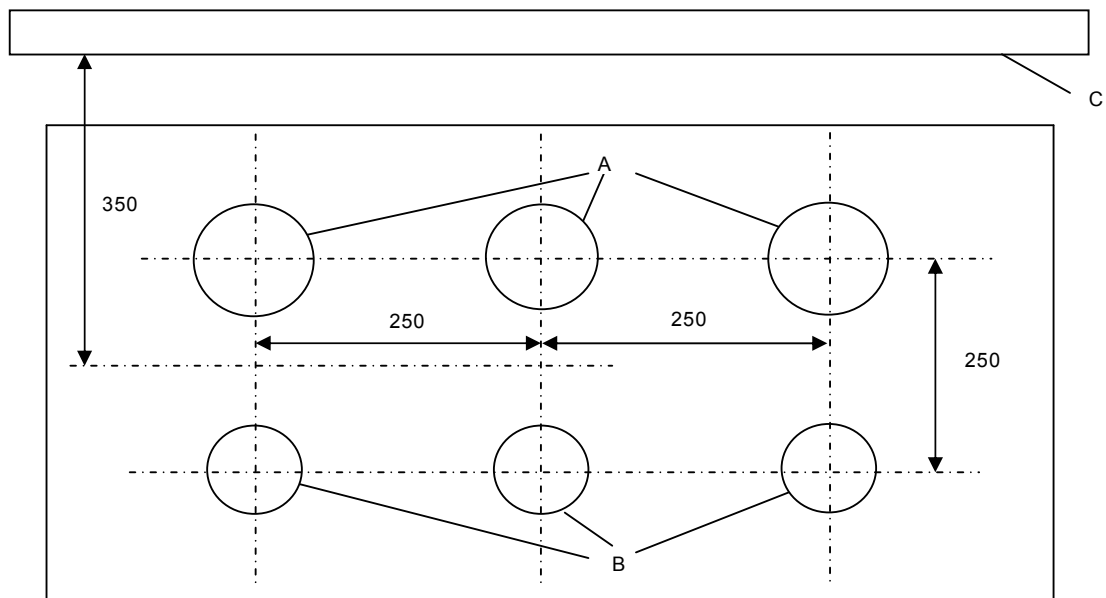
NOTE OF THE SECRETARY: The third paragraph has been modified to take gas burners into account for four element hobs, which have been introduced in the proposal for the six element hob. In addition, both paragraphs now take into account the configuration of the hob test setup given in Figure 101.

National Committees are invited to comment if they disagree.

Add the following figure:



a) Four element hob



b) Six element hob

Dimensions in millimetres

Key

- A Electric hob element, 2 kW
- B Electric hob element, 1,5 kW
- C Vertical support for the **range hood**

Figure 101 – Hob layout for the heating test