



**SLOVENSKI STANDARD**  
**SIST EN ISO 5211:2001**  
**01-december-2001**

---

Industrial valves - Part-turn actuator attachments (ISO 5211:2001)

Industrial valves - Part-turn actuator attachments (ISO 5211:2001)

Industriearmaturen - Anschlüsse von Schwenkantrieben (ISO 5211:2001)

Robinetterie industrielle - Raccordement des actionneurs a fraction de tour (ISO 5211:2001)

**(standards.iteh.ai)**

**Ta slovenski standard je istoveten z: EN ISO 5211:2001**

<https://standards.iteh.ai/catalog/standards/sist/e2c008ba-960d-46a0-acdc-6fc246cd7e4d/sist-en-iso-5211-2001>

**ICS:**

23.060.01      Ventili na splošno      Valves in general

**SIST EN ISO 5211:2001**      en

**iTeh STANDARD PREVIEW**  
**(standards.iteh.ai)**

[SIST EN ISO 5211:2001](https://standards.iteh.ai/catalog/standards/sist/e2c008ba-960d-46a0-acdc-6fc246cd7e4d/sist-en-iso-5211-2001)

<https://standards.iteh.ai/catalog/standards/sist/e2c008ba-960d-46a0-acdc-6fc246cd7e4d/sist-en-iso-5211-2001>

EUROPEAN STANDARD

EN ISO 5211

NORME EUROPÉENNE

EUROPÄISCHE NORM

February 2001

ICS 23.060.01

English version

## Industrial valves - Part-turn actuator attachments (ISO 5211:2001)

Robinetterie industrielle - Raccordement des actionneurs à fraction de tour (ISO 5211:2001)

Industriearmaturen - Anschlüsse von Schwenkantrieben (ISO 5211:2001)

This European Standard was approved by CEN on 7 December 2000.

CEN members are bound to comply with the CEN/CENELEC Internal Regulations which stipulate the conditions for giving this European Standard the status of a national standard without any alteration. Up-to-date lists and bibliographical references concerning such national standards may be obtained on application to the Management Centre or to any CEN member.

This European Standard exists in three official versions (English, French, German). A version in any other language made by translation under the responsibility of a CEN member into its own language and notified to the Management Centre has the same status as the official versions.

CEN members are the national standards bodies of Austria, Belgium, Czech Republic, Denmark, Finland, France, Germany, Greece, Iceland, Ireland, Italy, Luxembourg, Netherlands, Norway, Portugal, Spain, Sweden, Switzerland and United Kingdom.

[SIST EN ISO 5211:2001](https://standards.iteh.ai/catalog/standards/sist/e2c008ba-960d-46a0-acdc-6fc246cd7e4d/sist-en-iso-5211-2001)

<https://standards.iteh.ai/catalog/standards/sist/e2c008ba-960d-46a0-acdc-6fc246cd7e4d/sist-en-iso-5211-2001>



EUROPEAN COMMITTEE FOR STANDARDIZATION  
COMITÉ EUROPÉEN DE NORMALISATION  
EUROPÄISCHES KOMITEE FÜR NORMUNG

Management Centre: rue de Stassart, 36 B-1050 Brussels

## Contents

	Page
Foreword.....	3
1 Scope .....	4
2 Normative references .....	5
3 Terms and definitions.....	5
4 Maximum flange torques.....	5
5 Flange dimensions .....	6
6 Designation.....	8
7 Dimensions and torques .....	9
7.1 General.....	9
7.2 Drive by key(s).....	9
7.3 Drive by parallel or diagonal square head .....	12
7.4 Drive by flat head .....	13
8 Position of driven components at interface below part-turn actuator .....	14
8.1 Drive by key(s).....	14
8.2 Drive by parallel or diagonal square head .....	15
8.3 Drive by flat head .....	16
Bibliography .....	17

SIST EN ISO 5211:2001

<https://standards.iteh.ai/catalog/standards/sist/e2c008ba-960d-46a0-acdc-6fc246cd7e4d/sist-en-iso-5211-2001>

## Foreword

The text of EN ISO 5211:2001 has been prepared by Technical Committee CEN/TC 69 "Industrial valves", the secretariat of which is held by AFNOR, in collaboration with Technical Committee ISO/TC 153 "Valves".

This European Standard shall be given the status of a national standard, either by publication of an identical text or by endorsement, at the latest by August 2001, and conflicting national standards shall be withdrawn at the latest by August 2001.

This European Standard currently includes actuators with key(s), square and flat drives. Other types of drives may be included in the future.

This European Standard has been prepared under a mandate given to CEN by the European Commission and the European Free Trade Association. This European Standard is considered to be a supporting standard to those application and product standards which in themselves support an essential safety requirement of a New Approach Directive and which make reference to this European Standard.

According to the CEN/CENELEC Internal Regulations, the national standards organizations of the following countries are bound to implement this European Standard: Austria, Belgium, Czech Republic, Denmark, Finland, France, Germany, Greece, Iceland, Ireland, Italy, Luxembourg, Netherlands, Norway, Portugal, Spain, Sweden, Switzerland and the United Kingdom.

**iTeh STANDARD PREVIEW**  
**(standards.iteh.ai)**

[SIST EN ISO 5211:2001](https://standards.iteh.ai/catalog/standards/sist/e2c008ba-960d-46a0-acdc-6fc246cd7e4d/sist-en-iso-5211-2001)

<https://standards.iteh.ai/catalog/standards/sist/e2c008ba-960d-46a0-acdc-6fc246cd7e4d/sist-en-iso-5211-2001>

## 1 Scope

This European Standard specifies requirements for the attachment of part-turn actuators, with or without gearboxes, to industrial valves.

The attachment of part-turn actuators to control valves is in accordance with the requirements of this standard only when subject to an agreement between the supplier and the purchaser.

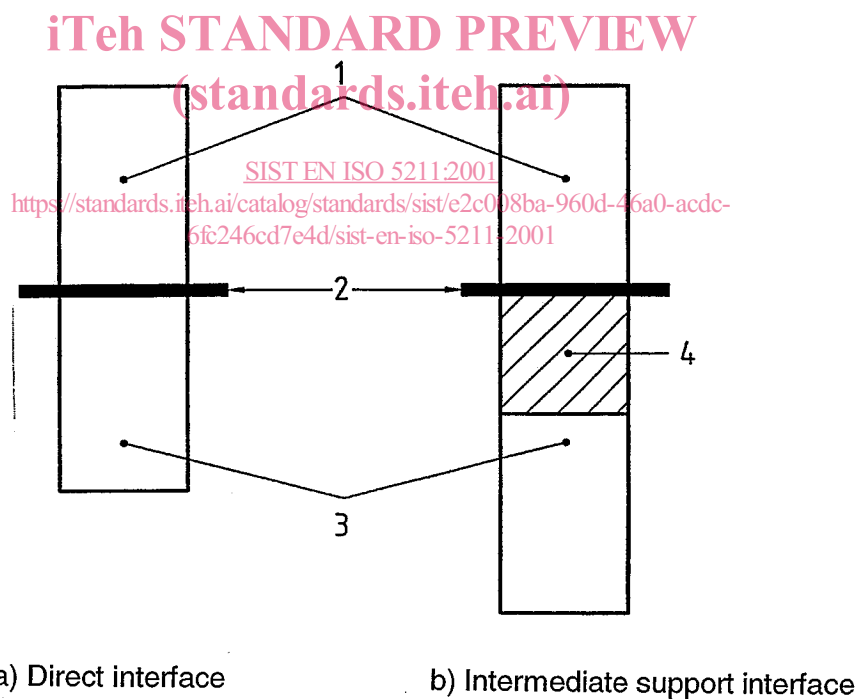
This standard specifies :

- flange dimensions necessary for the attachment of part-turn actuators to industrial valves (see Figure 1a) or to intermediate supports (see Figure 1b) ;
- driving component dimensions of part-turn actuators necessary to attach them to the driven components ;
- reference values for torques for interfaces and for couplings having the dimensions specified in this standard.

The attachment of the intermediate support to the valve is not the subject of this standard.

NOTE 1 In this standard the term “valve” may also be understood to include “valve with an intermediate support” (see Figure 1).

NOTE 2 When the part-turn actuator is a combination of a multi-turn actuator and a gearbox, the multi-turn actuator attachment to the gearbox should be in accordance with EN ISO 5210.



### Key

- 1 Part-turn actuator
- 2 Interface
- 3 Valve
- 4 Intermediate support

Figure 1 - Direct and intermediate support interfaces

## 2 Normative references

This European Standard incorporates by dated or undated reference, provisions from other publications. These normative references are cited at the appropriate places in the text and the publications are listed hereafter. For dated references, subsequent amendments to or revisions of any of these publications apply to this European standard only when incorporate in it by amendments or revision. For undated references, the latest edition of the publication referred to applies (including amendments).

ISO 273, *Fasteners - Clearance holes for bolts and screws.*

ISO/TR 773, *Rectangular or square parallel keys and their corresponding keyways (dimensions in millimetres).*

## 3 Terms and definitions

For the purposes of this European Standard, the following terms and definitions apply :

### 3.1

#### **actuator**

any power operated device used to operate a valve. The device is designed to operate using motive energy which may be electrical, pneumatic, hydraulic, etc., or a combination of these. Movement is limited by travel, torque or thrust

### 3.2

#### **part-turn actuator**

actuator which transmits torque to the valve for a rotation of one revolution or less. It does not have to be capable of withstanding axial thrust

### 3.3

#### **gearbox**

any mechanism designed to reduce the torque required to operate a valve

### 3.4

#### **torque**

turning moment transmitted through the mounting flanges and connection components. It is expressed in Newton-metres (Nm)

## 4 Maximum flange torques

The maximum flange torque values listed in Table 1 give the maximum torques which can be transmitted through the mounting flange.

Table 1 - Maximum flange torque values

Flange type	Maximum flange torque Nm
F03	32
F04	63
F05	125
F07	250
F10	500
F12	1 000
F14	2 000
F16	4 000
F25	8 000
F30	16 000
F35	32 000
F40	63 000
F48	125 000
F60	250 000

The values specified in Table 1 have been defined on the basis of bolts in tension only at a stress of 290 MPa<sup>1</sup> and a coefficient of friction of 0,2 between the mounting interface. All variations in these defined parameters lead to variations of the transmittable torque values.

The selection of flange types for a particular application should take into account the additional torques that may be generated because of inertia or other factors.

## 5 Flange dimensions

Flanges for part-turn actuator attachments shall comply with the dimensions shown in Figure 2 and given in Table 2. The method of attachment shall be by means of studs, screws or through bolting. When through bolting is used, the diameter of the clearance holes shall permit the use of bolts of a size given by the corresponding dimension  $d_4$  in Table 2. Holes for the studs, screws or bolts shall be equi-spaced and positioned off-centre (see Figure 3 and Table 3), and shall conform to the requirements of ISO 273.

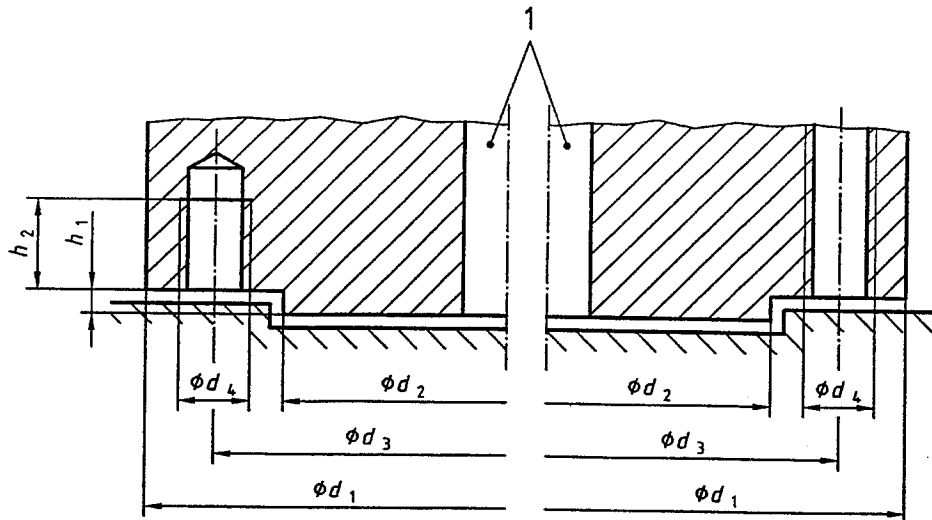
The flange on the valve shall have a recess corresponding to the diameter  $d_2$ ; a spigot on the part-turn actuator is optional.

The minimum values for dimension  $h_2$  apply to flanges having material of proof stress  $R_{p0,2} \geq 200$  MPa.

Dimension  $d_1$  has been calculated to provide sufficient seating for nuts and bolt heads. Such seating is defined as a radius from the bolt hole centre with the dimension  $(d_1 - d_3) / 2$ , and is a minimum. The flange shape and the design of the mounting surface of the valve and part-turn actuator outside these areas of seating is left to the choice of the manufacturer.

<sup>1</sup> 1MPa = 1N/mm<sup>2</sup>



**Key**

1 Part-turn actuator

**Figure 2 - Flange dimensions****Table 2 - Flange dimensions**

Dimensions in millimetres

iTeh STANDARD PREVIEW

(standards.iteh.ai)

Flange type	$d_1$	$d_2$ f8	$d_3$	$d_4$	$h_1$ max.	$h_2$ min.	Number of screws, studs or bolts
F03	46	25	36	M5	3	8	4
F04	54	30	42	M5	3	8	4
F05	65	35	50	M6	3	9	4
F07	90	55	70	M8	3	12	4
F10	125	70	102	M10	3	15	4
F12	150	85	125	M12	3	18	4
F14	175	100	140	M16	4	24	4
F16	210	130	165	M20	5	30	4
F25	300	200	254	M16	5	24	8
F30	350	230	298	M20	5	30	8
F35	415	260	356	M30	5	45	8
F40	475	300	406	M36	8	54	8
F48	560	370	483	M36	8	54	12
F60	686	470	603	M36	8	54	20