



SLOVENSKI STANDARD
SIST ISO 9374-5:1997
01-november-1997

8 j][UU!`DcfYVb]`dcXUh_!`) "XY.`AcgfbU]b`_cn] UghUXj][UU

Cranes -- Information to be provided -- Part 5: Overhead travelling cranes and portal bridge cranes

Appareils de levage à charge suspendue -- Informations à fournir -- Partie 5: Ponts roulants et ponts portiques

STANDARD PREVIEW
(standards.iteh.ai)

Ta slovenski standard je istoveten z: **ISO 9374-5:1991**
<https://standards.iteh.ai/catalog/standards/sist/a85c2bc-c5a0-427c-abc8-b9420e2f6632/sist-iso-9374-5-1997>

ICS:

53.020.20 Dvigala Cranes

SIST ISO 9374-5:1997 en

iTeh STANDARD PREVIEW
(standards.iteh.ai)

SIST ISO 9374-5:1997

<https://standards.iteh.ai/catalog/standards/sist/a8f5c2bc-c5a6-427c-abc8-b9420e2f6632/sist-iso-9374-5-1997>

INTERNATIONAL STANDARD

ISO
9374-5

First edition
1991-08-01

Cranes — Information to be provided —

Part 5 :

Overhead travelling cranes and portal bridge cranes

iTeh STANDARD PREVIEW

Appareils de levage à charge suspendue — Informations à fournir —

(Partie 5 : Ponts roulants et ponts portiques)

[SIST ISO 9374-5:1997](https://standards.iteh.ai/catalog/standards/sist/a8f5c2bc-c5a6-427c-abc8-b9420e2f6632/sist-iso-9374-5-1997)

<https://standards.iteh.ai/catalog/standards/sist/a8f5c2bc-c5a6-427c-abc8-b9420e2f6632/sist-iso-9374-5-1997>



Reference number
ISO 9374-5 : 1991 (E)

ISO 9374-5 : 1991 (E)

Foreword

ISO (the International Organization for Standardization) is a worldwide federation of national standards bodies (ISO member bodies). The work of preparing International Standards is normally carried out through ISO technical committees. Each member body interested in a subject for which a technical committee has been established has the right to be represented on that committee. International organizations, governmental and non-governmental, in liaison with ISO, also take part in the work. ISO collaborates closely with the International Electrotechnical Commission (IEC) on all matters of electrotechnical standardization.

Draft International Standards adopted by the technical committees are circulated to the member bodies for voting. Publication as an International Standard requires approval by at least 75 % of the member bodies casting a vote.

International Standard ISO 9374-5 was prepared by Technical Committee ISO/TC 96, *Cranes*, Sub-Committee SC 9, *Bridge and gantry cranes*.

ISO 9374 will consist of the following parts, under the general title *Cranes* — *Information to be provided*:

- *Part 1: General*
- *Part 2: Mobile cranes*
- *Part 3: Tower cranes*
- *Part 4: Jib cranes*
- *Part 5: Overhead travelling cranes and portal bridge cranes*

Annex A forms an integral part of this part of ISO 9374.

© ISO 1991

All rights reserved. No part of this publication may be reproduced or utilized in any form or by any means, electronic or mechanical, including photocopying and microfilm, without permission in writing from the publisher.

International Organization for Standardization
Case postale 56 • CH-1211 Genève 20 • Switzerland

Printed in Switzerland

Cranes — Information to be provided —

Part 5:

Overhead travelling cranes and portal bridge cranes

iTeh STANDARD PREVIEW (standards.iteh.ai)

1 Scope

This part of ISO 9374 specifies information to be provided

suitable overhead travelling crane or portal bridge crane and equipment to satisfy the duty requirements and service conditions.

- a) by a purchaser in enquiring about or ordering an overhead travelling crane or portal bridge crane; and
- b) by a manufacturer in tendering for or supplying an overhead travelling crane or portal bridge crane.

2 Normative reference

The following standard contains provisions which, through reference in this text, constitute provisions of this part of ISO 9374. At the time of publication, the edition indicated was valid. All standards are subject to revision, and parties to agreements based on this part of ISO 9374 are encouraged to investigate the possibility of applying the most recent edition of the standard indicated below. Members of IEC and ISO maintain registers of currently valid International Standards.

ISO 7363 : 1986, *Cranes and lifting appliances — Technical characteristics and acceptance documents*.

3 Information to be provided by the purchaser with the enquiry or order

The purchaser shall provide the information given in annex A to enable the crane manufacturer to offer or to supply the most

4 Information to be provided by the manufacturer

4.1 Technical information

The information provided by the manufacturer shall include:

- a) technical information and test certificates for the crane to facilitate its installation, testing and use in accordance with ISO 7363 and as appropriate for the appliance;
- b) an instruction manual which shall include details of routine servicing, inspection and maintenance of the crane;
- c) erection information, when requested.

4.2 Dimensions

The manufacturer shall provide general arrangement drawings, with dimensions, showing that the purchaser's requirements, including the restrictions stated in figures 1 to 3, are met.

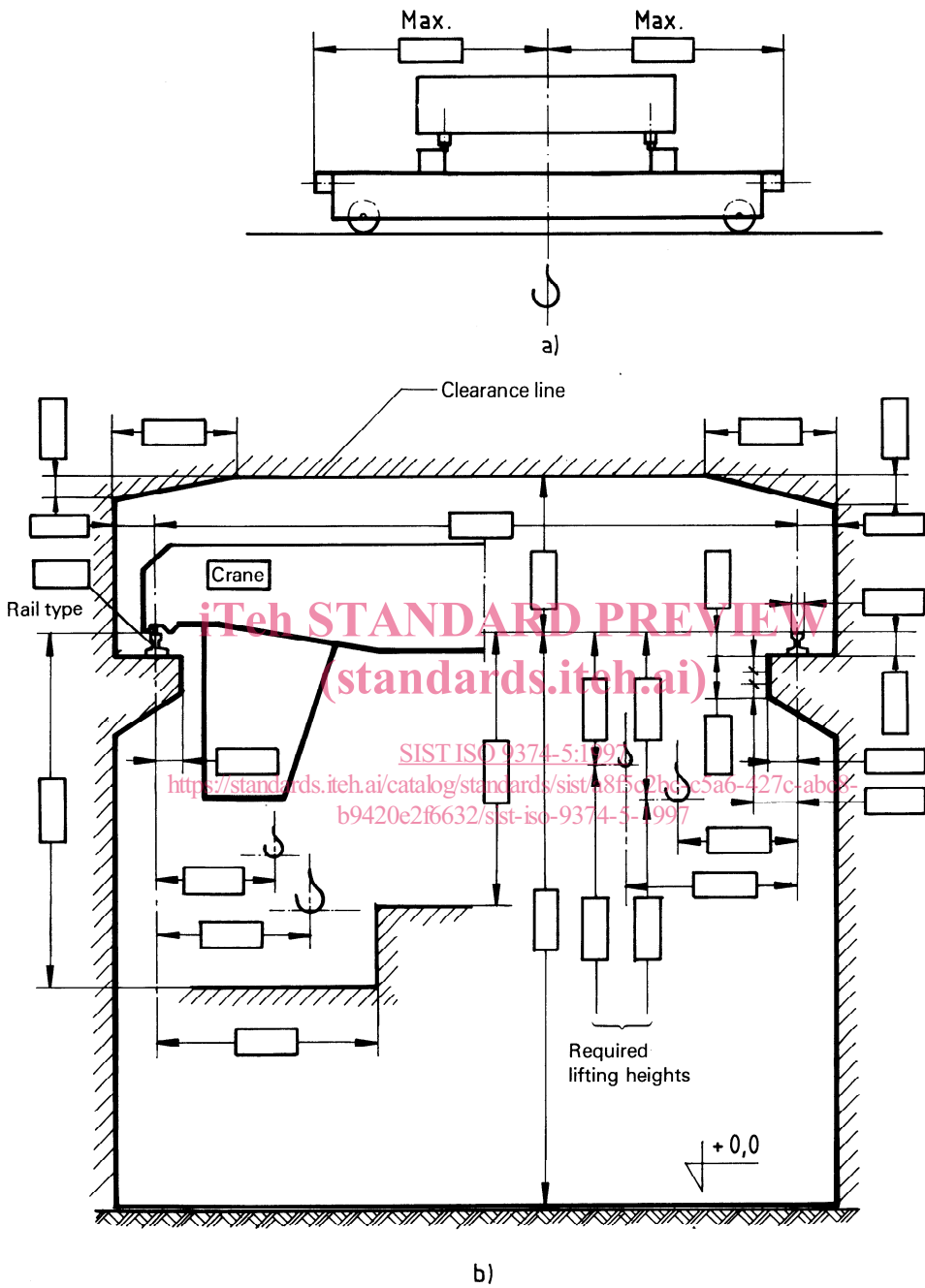
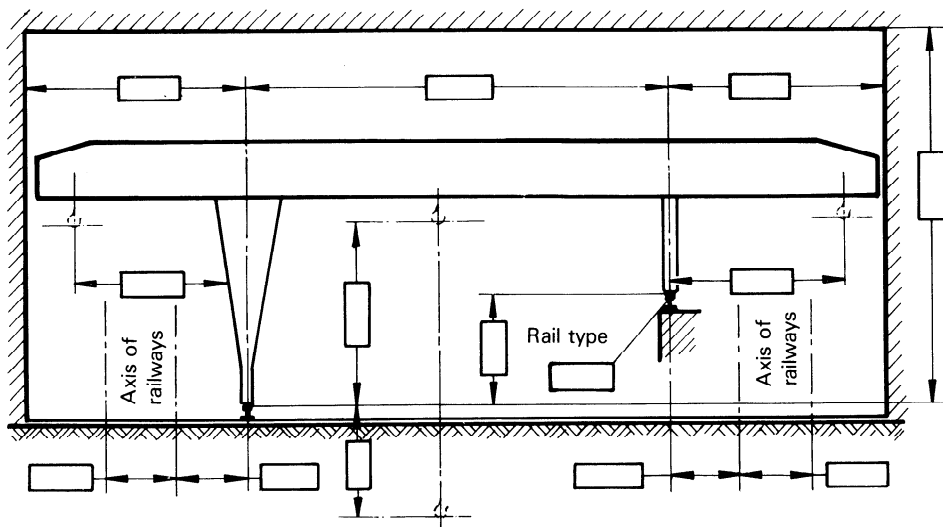
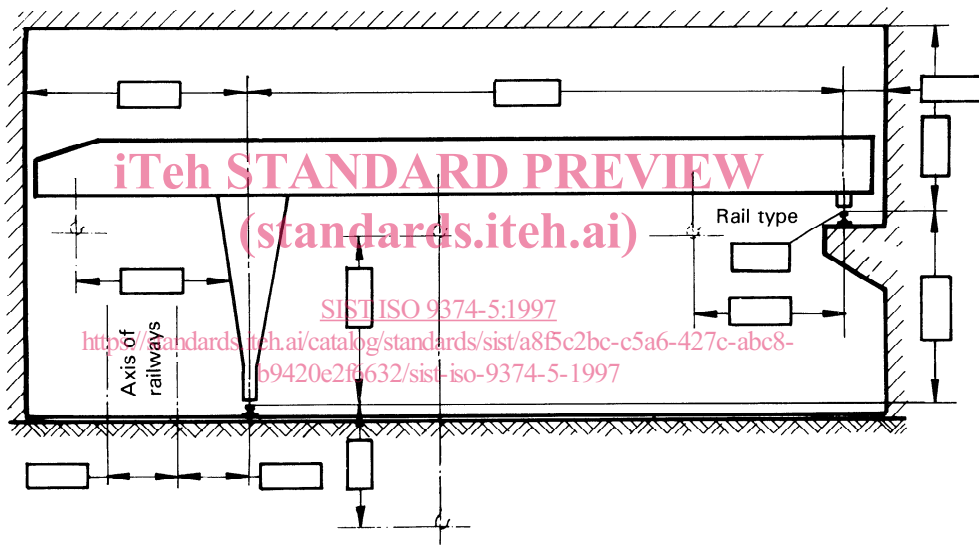


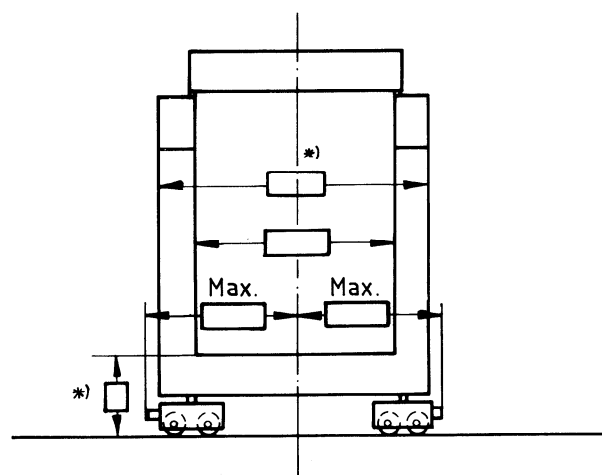
Figure 1 — Overhead travelling crane



a) Portal bridge crane



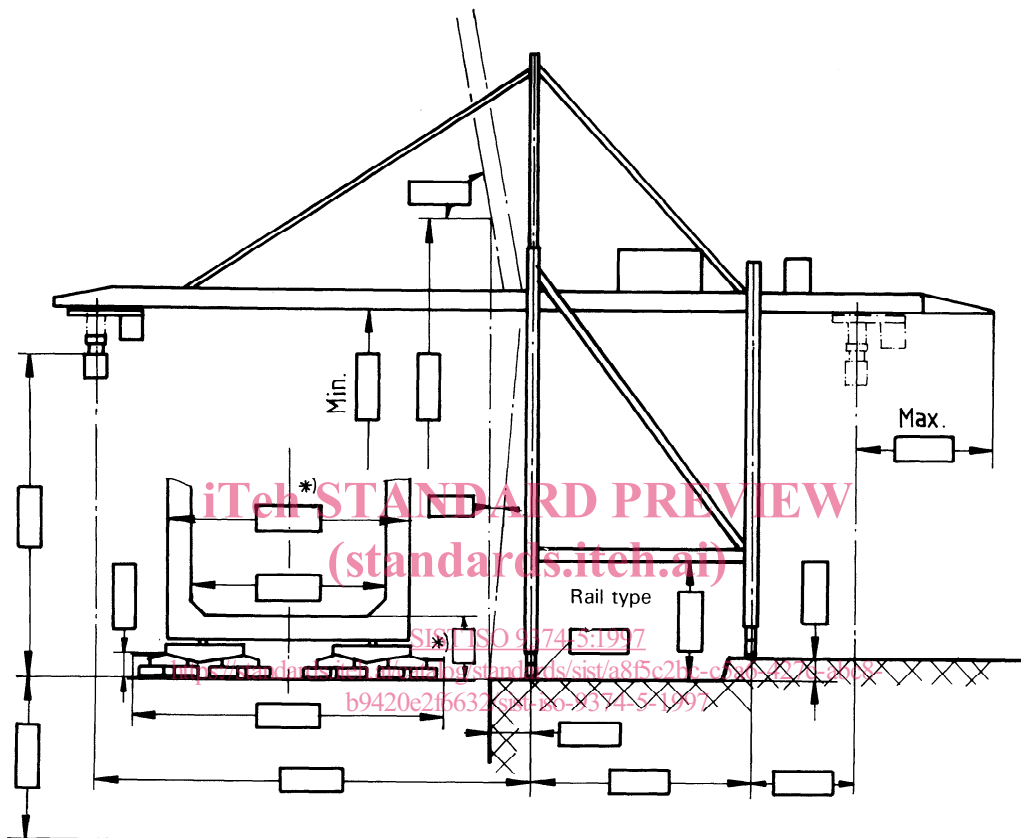
b) Semi-portal crane



c) End view

*) Max., if restricted.

Figure 2 — Portal bridge crane and semi-portal bridge crane



*) Max., if restricted.

Figure 3 — Typical ship-to-shore container crane

Annex A
(normative)

**Format for information to be provided by the purchaser
with the enquiry or order**

Purchase enquiry or order form		
Name of company:		
Address:		
Name of person who may be contacted:		
Telephone number:		
Telex number:		
Telefax number:		
Crane to be installed in:	(town) (country)	
Number of cranes required:		
Required rated capacity (payload plus non-fixed lifting attachment)		
a) Main hoist:	t	
b) Auxiliary hoist:	t	
Throughput		
a) Path of movements (coordinates)		
	<p style="text-align: right;">x_i (m)</p> <p style="text-align: right;">y_i (m)</p>	
b) Time of one working cycle:		s
c) Number of working cycles per hour:		h^{-1}
d) Throughput with 100 % rated payload:		t/h
Span, centre-to-centre of gantry rail(s):		m
Description of type of crane and crab:		
Are platforms required on the bridge?		
Position of access point(s):		
Type of payload:		
Material to be handled:		
Specific weight of bulk material:		t/m^3
Type of hook or lifting device:		