

INTERNATIONAL STANDARD

ISO
9448-10

First edition
1992-06-01

Tools for pressing — Guide bushes —

Part 10:

Form E, gliding bushes, flanged, type 2

iTeh STANDARD PREVIEW
(standards.iteh.ai)

Outillage de presse — Bagues de guidage —

*Partie 10: Forme E, bagues à collerette à bride pour guidage lisse,
type 2*

<https://standards.iteh.ai/catalog/standards/sist/0e2a9dbd-1c06-48f5-9f68-3e4d441d7d69/iso-9448-10-1992>



Reference number
ISO 9448-10:1992(E)

Foreword

ISO (the International Organization for Standardization) is a worldwide federation of national standards bodies (ISO member bodies). The work of preparing International Standards is normally carried out through ISO technical committees. Each member body interested in a subject for which a technical committee has been established has the right to be represented on that committee. International organizations, governmental and non-governmental, in liaison with ISO, also take part in the work. ISO collaborates closely with the International Electrotechnical Commission (IEC) on all matters of electrotechnical standardization.

Draft International Standards adopted by the technical committees are circulated to the member bodies for voting. Publication as an International Standard requires approval by at least 75 % of the member bodies casting a vote.

International Standard ISO 9448-10 was prepared by Technical Committee ISO/TC 29, *Small tools*, Sub-Committee SC 8, *Tools for pressing and moulding*.

ISO 9448 consists of the following parts, under the general title *Tools for pressing — Guide bushes*:

- Part 1: *Forms*
- Part 2: *Form A, gliding bushes, plain, type 1*
- Part 3: *Form B, ball cage bushes, plain, type 1*
- Part 4: *Form C, gliding bushes, headed, type 1*
- Part 5: *Form D, ball cage bushes, headed, type 1*
- Part 6: *Form E, gliding bushes, flanged, type 1*
- Part 7: *Form F, ball cage bushes, flanged, type 1*
- Part 8: *Form G, gliding bushes, stepped, type 1*
- Part 9: *Form B, ball cage bushes, plain, type 2*
- Part 10: *Form E, gliding bushes, flanged, type 2*

© ISO 1992

All rights reserved. No part of this publication may be reproduced or utilized in any form or by any means, electronic or mechanical, including photocopying and microfilm, without permission in writing from the publisher.

International Organization for Standardization
Case Postale 56 • CH-1211 Genève 20 • Switzerland

Printed in Switzerland

— *Part 11: Form F, ball cage bushes, flanged, type 2*
Annex A of this part of ISO 9448 is for information only.

iTeh STANDARD PREVIEW
(standards.iteh.ai)

ISO 9448-10:1992

<https://standards.iteh.ai/catalog/standards/sist/0e2a9dbd-1c06-48f5-9f68-3e4d441d7d69/iso-9448-10-1992>

iTeh STANDARD PREVIEW
(standards.iteh.ai)

This page intentionally left blank
ISO 9448-10:1992

<https://standards.iteh.ai/catalog/standards/sist/0e2a9dbd-1c06-48f5-9f68-3e4d441d7d69/iso-9448-10-1992>

Tools for pressing — Guide bushes —

Part 10:

Form E, gliding bushes, flanged, type 2

1 Scope

This part of ISO 9448 specifies the main dimensions and tolerances, in millimetres, of guide bushes of form E, flanged gliding bushes, type 2, intended for use in press tools with guide pillars with a tolerance on d_1 of g6 in accordance with ISO 9182-3, and to be mounted in the clamp plate with transition fit and fixed to the plate by means of guide clamps.

It gives guidance on the materials, and specifies the designation of bushes in accordance with this part of ISO 9448.

2 Normative reference

The following standard contains provisions which, through reference in this text, constitute provisions of this part of ISO 9448. At the time of publication, the edition indicated was valid. All standards are subject to revision, and parties to agreements based on this part of ISO 9448 are encouraged to investigate the possibility of applying the most recent edition of the standard indicated below. Members of IEC and ISO maintain registers of currently valid International Standards.

ISO 9182-3:1992, *Tools for pressing — Guide pillars — Part 3: Type B, end-locking pillars.*

3 Dimensions

See figure 1 and table 1.

Details not stated, such as chamfers, radii, lubrication grooves, etc., are left to the manufacturer's discretion.

4 Material

The material shall form the subject of agreement between the manufacturer and the user.

5 Designation

A guide bush in accordance with this part of ISO 9448 shall be designated by

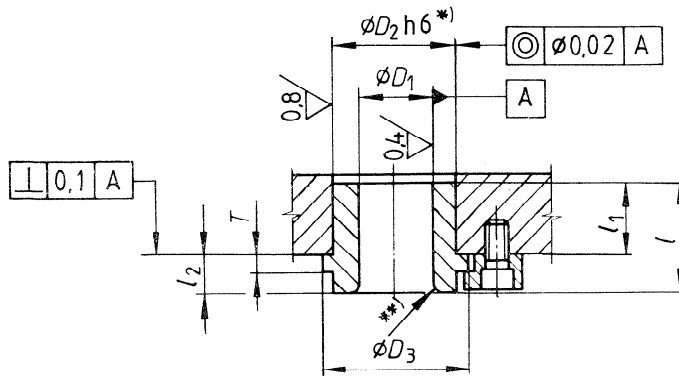
- "Guide bush";
- a reference to this part of ISO 9448;
- its form;
- its guiding diameter, D_1 , in millimetres.

EXAMPLE

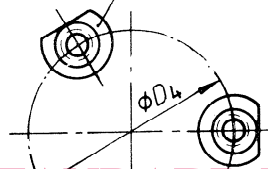
A guide bush of form E, flanged gliding bush, type 2, of guiding diameter $D_1 = 25$ mm is designated as follows:

Guide bush ISO 9448-10 E - 25

Surface roughness values in micrometres



Number of guide clamps at the manufacturer's discretion



iTeh STANDARD PREVIEW
(standards.iteh.ai)

- *) Intended to fit in a hole having a tolerance H7. When the bushes are glued, the tolerance j6 is permitted.
- **) The value of the radius is at the manufacturer's discretion.

ISO 9448-10:1992
<https://standards.iteh.ai/catalog/standards/sist/0e2a9dbd-1c06-48f5-9f68-3e4d44111078/sist-9448-10-1992>

Figure 1

Table 1

D_1	nom.	25	32	40	50	63	80	100					
	tol.	H7											
D_2 h6 ¹⁾		32	40	50	63	80	100	125					
D_3		40	50	63	71	90	112	140					
D_4	$\pm 0,3$	58	66	79	89	123	143	168					
T	$\pm 0,1$	6,3	6,3	6,3	6,3	10	10	10					
nom.	l_1 tol.	l	l_2	l	l_2	l	l_2	l	l_2	l	l_2	l	l_2
32	$\begin{matrix} -2,0 \\ -2,5 \end{matrix}$	40	8										
40	$\begin{matrix} -3 \\ -4 \end{matrix}$			50	12								
50						63	13						
56								71	15				
63									80	17			
80										100	20		
100	$\begin{matrix} -3 \\ -5 \end{matrix}$										125	25	

iTeh STANDARD PREVIEW
(standards.iteh.ai)

1) When the bushes are glued, the tolerance j6 is permitted.

ISO 9448-10:1992

<https://standards.iteh.ai/catalog/standards/sist/0e2a9dbd-1c06-48f5-9f68-3e4d441d7d69/iso-9448-10-1992>

Annex A
(informative)

Bibliography

- [1] ISO 6508:1986, *Metallic materials — Hardness test — Rockwell test (scales A - B - C - D - E - F - G - H - K)*.
- [2] ISO 9448-1:1991, *Tools for pressing — Guide bushes — Part 1: Forms*.

iTeh STANDARD PREVIEW
(standards.iteh.ai)

ISO 9448-10:1992
<https://standards.iteh.ai/catalog/standards/sist/0e2a9dbd-1c06-48f5-9ff8-3e4d441d7d69/iso-9448-10-1992>

iTeh STANDARD PREVIEW
(standards.iteh.ai)

This page intentionally left blank
ISO 9448-10:1992

<https://standards.iteh.ai/catalog/standards/sist/0e2a9dbd-1c06-48f5-9f68-3e4d441d7d69/iso-9448-10-1992>