



Designation: C 411 – 97

Standard Test Method for Hot-Surface Performance of High-Temperature Thermal Insulation¹

This standard is issued under the fixed designation C 411; the number immediately following the designation indicates the year of original adoption or, in the case of revision, the year of last revision. A number in parentheses indicates the year of last reapproval. A superscript epsilon (ϵ) indicates an editorial change since the last revision or reapproval.

1. Scope

1.1 This test method covers the determination of the performance of commercial sizes of both block and pipe forms of thermal insulating materials when exposed to simulated hot-surface application conditions. The term “hot-surface performance” has reference to a simulated use-temperature test in which the heated testing surface is in a horizontal position.

1.2 This test method refers primarily to high-temperature insulations that are applicable to hot-side temperatures in excess of 200°F (93°C). It may be used for materials such as preformed insulations, insulating cements, blankets, etc., by proper laboratory preparation of the samples.

1.3 The values stated in inch-pound units are to be regarded as the standard. The values given in parentheses are for information only.

1.4 *This standard does not purport to address all of the safety concerns, if any, associated with its use. It is the responsibility of the user of this standard to establish appropriate safety and health practices and determine the applicability of regulatory limitations prior to use.*

2. Referenced Documents

2.1 *ASTM Standards:*

C 168 Terminology Relating to Thermal Insulating Materials²

3. Terminology

3.1 *Definitions*—Terminology C 168 shall apply to the terms used in this test method.

4. Significance and Use

4.1 Performance in service is the final measure of value for a thermal insulation, but simulative service tests may give useful indications. One type involves application for a specified time to a surface heated at a temperature approximately that of intended service, and noting during the test and

afterward, changes in the material and its properties. Measurement of these changes may be used for predicting what may occur in service as a result of exposure to temperatures corresponding to those of the tests.

5. Apparatus

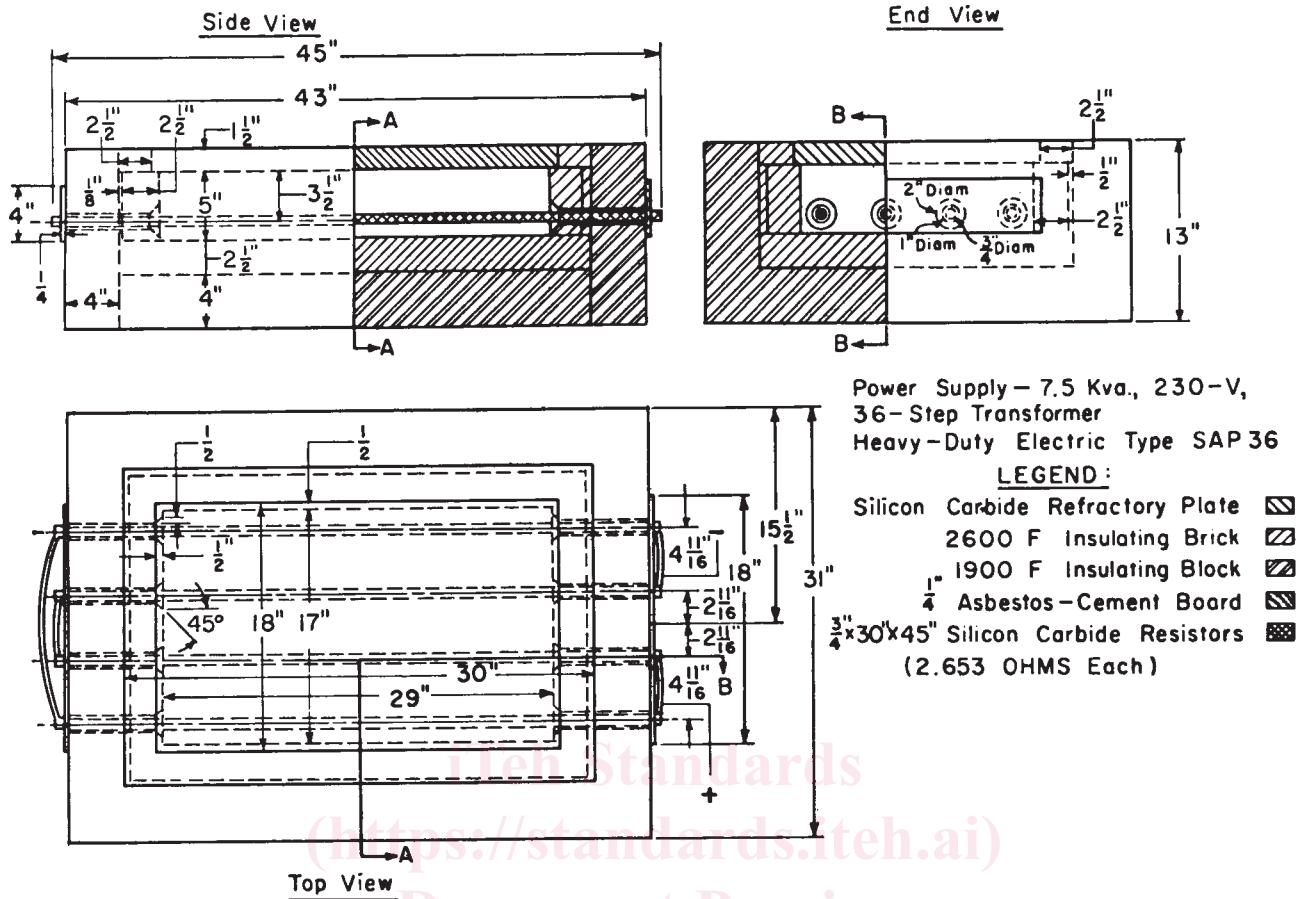
5.1 *Heating Plate*—The heating plate shall consist of a corrosion-resistant and heat-resistant plate with a preferred exposed test area of 36 by 18 in. (914 by 457 mm), but having a minimum test area of 18 by 18 in. (457 by 457 mm). The heated area shall have an insulated, heated guard area having a minimum width of 3 in. (76 mm) around the entire periphery of the test area. The plate shall be supported in a horizontal plane at a sufficient number of points to prevent sagging. It shall be heated on the under side by gas or electricity. The surface temperature of the plate shall be measured by not less than five thermocouples. Four of the thermocouples shall be located along the diagonals that extend from the corners of the exposed area of the plate and at a distance of 6 in. (152 mm) in from each corner. A fifth thermocouple shall be located near the center of the test plate area. The temperature at no point of measurement shall vary more than $\pm 5\%$ or $\pm 25^\circ\text{F}$ ($\pm 14^\circ\text{C}$), whichever is less, from the desired temperature. A heating chamber beneath the heating plate shall be formed to retain the heat generated by the heating means. A 6-in. thickness of insulation shall form the bottom and the sides, and the heating plate shall form the top of the chamber. Two suitable types of heating plates are shown in Fig. 1 and Fig. 2.

5.2 *Heating Pipe*—The heating pipe shall consist of a corrosion-resistant and heat-resistant pipe having a length of not less than 3 ft (0.9 m) and preferably 6 ft 6 in. (1.98 m). It shall be supported horizontally. The nominal diameter of the pipe shall preferably be 3 in. (76 mm). The pipe shall be heated electrically with a spiral heating coil placed along the inside of the pipe. Supplementary end heaters, and a guard section at least 3 in. long of the same insulation as that being placed on the test section, shall also be provided to guard against excessive losses from the ends of the test specimen. (Where possible, the use of standard thermal conductivity pipe test apparatus to serve as the heating pipe is recommended.) The surface temperature of the pipe shall be measured by means of thermocouples, not less than one for each 1 ft (0.3 m) of length

¹ This test method is under the jurisdiction of ASTM Committee C-16 on Thermal Insulation and is the direct responsibility of Subcommittee C16.31 on Chemical and Physical Properties.

Current edition approved May 10, 1997. Published August 1997. Originally published as C 411 – 58 T. Last previous edition C 411 – 82 (1992)¹.

² *Annual Book of ASTM Standards*, Vol 04.06.



Power Supply - 7.5 Kva., 230-V,
36-Step Transformer
Heavy-Duty Electric Type SAP 36

LEGEND:
 Silicon Carbide Refractory Plate
 2600 F Insulating Brick
 1900 F Insulating Block
 Asbestos-Cement Board
 3/4 x 30 x 45" Silicon Carbide Resistors
 (2.653 OHMS Each)

in.	1/8	1/4	1/2	3/4	1	1 1/2	2	2 1/2	2 11/16	3 1/2	4	4 11/16	5	13	15 1/2	17	18	29	30	31	43	45
mm	3	6	13	19	25	38	51	64	68	89	102	119	127	330	394	432	457	737	762	787	1092	1143

FIG. 1 Type A Heating Plate for Hot-Surface Performance Test

of the test specimen, and located spirally around the pipe at 90° intervals. The test portion of the pipe shall be that area under a full length of a pipe insulation undergoing test. The temperature at any point of measurement on the test portion shall not vary more than ± 5 % or ±25°F (±14°C), whichever is less, from the desired temperature.

5.3 *Temperature Measurement*—Thermocouples shall be used to measure the surface temperature of the heating plate and the heating pipe. They shall be applied either by peening the individual wires into small holes drilled into the surface and separated by not more than 1/8 in. (3 mm) or by joining the wires with a welded bead and cementing them in grooves with the bead tangent to the surface but not projecting above it. The thermocouples shall be made from wires having a size not greater than No. 22 Awg (0.644 mm), and preferably not larger than No. 26 Awg (0.405 mm). The combination of the thermocouple and measuring instrument used shall ensure an accuracy of temperature measurement of ± 1 %.

NOTE 1—This may require different thermocouples and measuring instruments for high-temperature tests than for moderate-temperature tests.

5.4 *Straightedge and Rule*—A straightedge having a length of at least 36 in. (0.9 m) and a small rule divided in 1/64 or 1/10 of 1 in. shall be used to determine warpage.

6. Sampling and Preparation of Test Specimens

6.1 All samples that will be required to complete the tests shall be selected at one time and in such a manner so as to be fully representative of the average of the material. Test specimens for any one test condition shall be selected from the original sample lot so as to be as representative as possible. The test specimens shall be commercial pieces. For pipe insulation, the full-size, commercial pipe sections shall be selected. Any diameter pipe insulation for which equipment is available may be tested. However, only pipe insulation of 3-in. (76-mm) nominal inside diameter need to be tested.

7. Procedure

7.1 Use the heating plate for testing the flat or block form of insulation. Use the heating pipe for pipe insulation. The thickness of the layers in multilayer insulation and the total thickness of insulation applied to the hot surface for a test shall be that recommended by the manufacturer for the temperature of the hot surface in question, or as agreed between the manufacturer and the purchaser. When multi-layer applications are to be tested, stagger each joint between adjacent test pieces in the same layer with respect to the joint in the next layer. Equally dispose about that joint the test piece in the next layer that covers a joint of the preceding layer.