

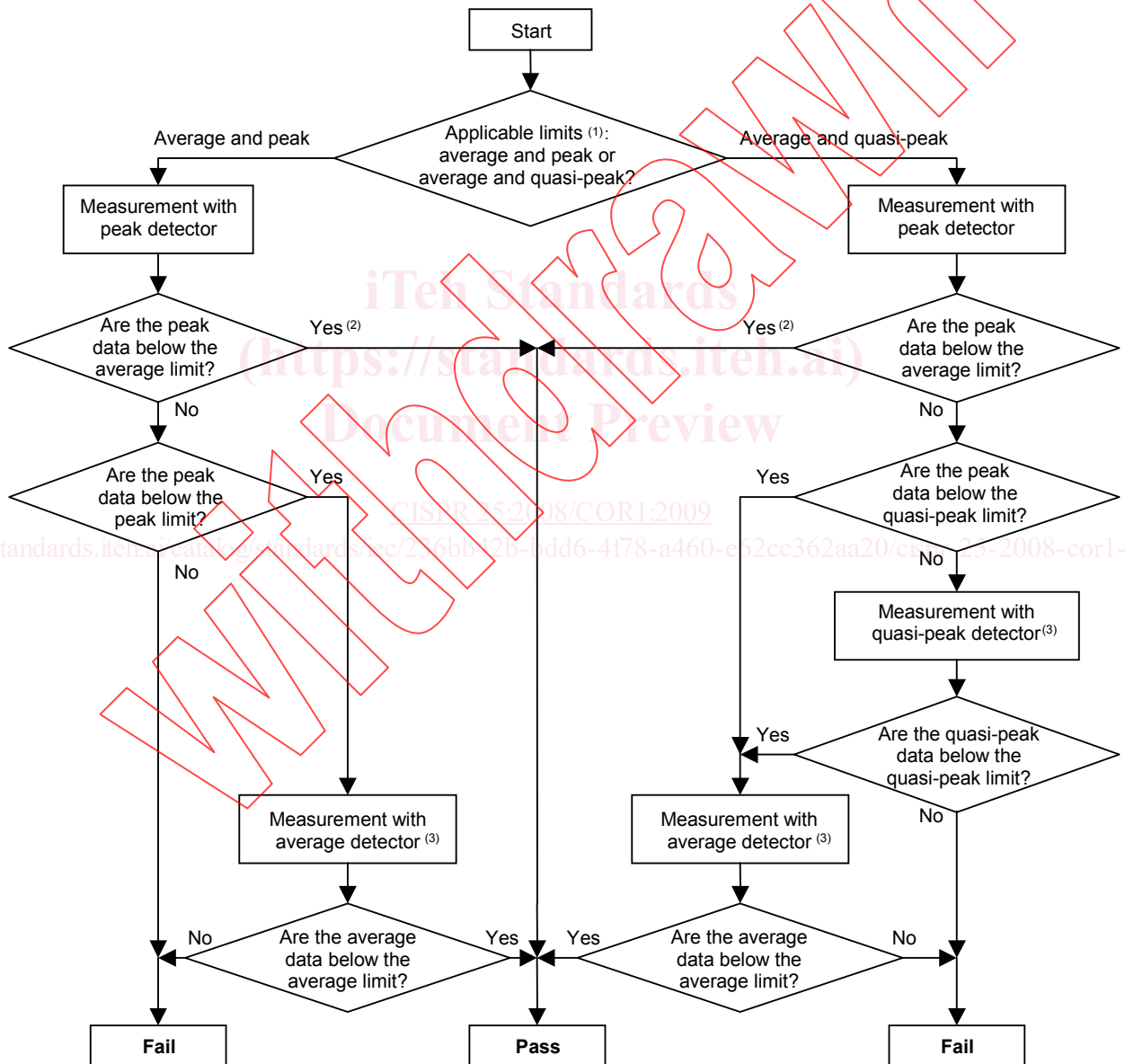
CISPR 25
(Third edition – 2008)

Vehicles, boats and internal combustion engines – Radio disturbance characteristics – Limits and methods of measurement for the protection of on-board receivers

CORRIGENDUM 1

Figure 1 – Method of determination of conformance for all frequency bands

Replace the existing figure and notes by the following:



IEC 051/09

NOTE 1 The conformance should normally be obtained by compliance to both average and peak limits or both average and quasi-peak limits unless the test plan defines that conformance can be obtained by compliance to the single appropriate limit) (depending on the case, peak, or average, or quasi-peak).

NOTE 2 Because measurement with peak detector is always higher or equal to measurement with average detector and applicable peak limit is always higher or equal to applicable average limit, this single detector measurement can lead to a simplified and quicker conformance process.

NOTE 3 This flow-chart is applicable for each individual frequency, e.g. only frequencies that are above the applicable limit need be remeasured with average or quasi-peak detector.

**Figure 4 – Average limit for radiated disturbances from vehicles GPS band
1 567,42 to 1 583,42 MHz**

In the existing figure, replace “Level dB ($\mu\text{V}/\text{m}$)” by:

Level dB(μV)

