



SLOVENSKI STANDARD
SIST ES 201 915-11 V1.4.1:2005
01-januar-2005

Open Service Access (OSA); Application Programming Interface (API); Part 11: Account Management SCF (Parlay 3)

Open Service Access (OSA); Application Programming Interface (API); Part 11: Account Management SCF (Parlay 3)

ITeH STANDARD PREVIEW
(standards.iteh.ai)

Ta slovenski standard je istoveten z: **ES 201 915-11 Version 1.4.1**
<https://standards.iteh.ai/catalog/standards/sist/299d81a2-6f61-46dc-b177-c743fb2743c4/sist-es-201-915-11-v1-4-1-2005>

ICS:

33.040.01	Telekomunikacijski sistemi na splošno	Telecommunication systems in general
-----------	--	---

SIST ES 201 915-11 V1.4.1:2005 **en**

iTeh STANDARD PREVIEW
(standards.iteh.ai)

[SIST ES 201 915-11 V1.4.1:2005](https://standards.iteh.ai/catalog/standards/sist/299d81a2-6fbf-46dc-b177-c743fb2743c4/sist-es-201-915-11-v1-4-1-2005)

<https://standards.iteh.ai/catalog/standards/sist/299d81a2-6fbf-46dc-b177-c743fb2743c4/sist-es-201-915-11-v1-4-1-2005>

ETSI ES 201 915-11 V1.4.1 (2003-07)

ETSI Standard

Open Service Access (OSA); Application Programming Interface (API); Part 11: Account Management SCF (Parlay 3)



iTeh STANDARD PREVIEW
(standards.iteh.ai)

[SIST ES 201 915-11 V1.4.1:2005](https://standards.iteh.ai/catalog/standards/sist/299d81a2-6fbf-46dc-b177-c743fb2743c4/sist-es-201-915-11-v1-4-1-2005)

<https://standards.iteh.ai/catalog/standards/sist/299d81a2-6fbf-46dc-b177-c743fb2743c4/sist-es-201-915-11-v1-4-1-2005>



Reference

RES/SPAN-120095-11

Keywords

API, OSA, IDL, UML**ETSI**

650 Route des Lucioles
F-06921 Sophia Antipolis Cedex - FRANCE

Tel.: +33 4 92 94 42 00 Fax: +33 4 93 65 47 16

Siret N° 348 623 562 00017 - NAF 742 C
Association à but non lucratif enregistrée à la
Sous-Préfecture de Grasse (06) N° 7803/88

iTeh STANDARD PREVIEW
(standards.iteh.ai)

SIST ES 201 915-11 V1.4.1:2005<https://standards.iteh.ai/catalog/standards/sist/299d81a2-6fbf-46dc-b177-c743fb2743c4/sist-201-915-11-v1-4-1-2005>
Important notice

Individual copies of the present document can be downloaded from:

<http://www.etsi.org>

The present document may be made available in more than one electronic version or in print. In any case of existing or perceived difference in contents between such versions, the reference version is the Portable Document Format (PDF). In case of dispute, the reference shall be the printing on ETSI printers of the PDF version kept on a specific network drive within ETSI Secretariat.

Users of the present document should be aware that the document may be subject to revision or change of status. Information on the current status of this and other ETSI documents is available at

<http://portal.etsi.org/tb/status/status.asp>

If you find errors in the present document, send your comment to:

editor@etsi.org

Copyright Notification

No part may be reproduced except as authorized by written permission.
The copyright and the foregoing restriction extend to reproduction in all media.

© European Telecommunications Standards Institute 2003.

© The Parlay Group 2003.

All rights reserved.

DECT™, **PLUGTESTS™** and **UMTS™** are Trade Marks of ETSI registered for the benefit of its Members.
TIPHON™ and the **TIPHON logo** are Trade Marks currently being registered by ETSI for the benefit of its Members.
3GPP™ is a Trade Mark of ETSI registered for the benefit of its Members and of the 3GPP Organizational Partners.

Contents

Intellectual Property Rights	5
Foreword.....	5
1 Scope	6
2 References	6
3 Definitions and abbreviations.....	6
3.1 Definitions	6
3.2 Abbreviations	6
4 Account Management SCF	7
4.1 General requirements on support of methods.....	7
5 Sequence Diagrams	7
5.1 Standard Transaction History Retrieval	7
5.2 Standard Query Handling.....	8
5.3 Standard Notification handling.....	9
6 Class Diagrams.....	10
7 The Service Interface Specifications	11
7.1 Interface Specification Format	11
7.1.1 Interface Class	11
7.1.2 Method descriptions	11
7.1.3 Parameter descriptions.....	12
7.1.4 State Model.....	12
7.2 Base Interface	12
7.2.1 Interface Class IpInterface	12
7.3 Service Interfaces	12
7.3.1 Overview	12
7.4 Generic Service Interface	12
7.4.1 Interface Class IpService	12
8 Account Management Interface Classes	13
8.1 Interface Class IpAccountManager	13
8.2 Interface Class IpAppAccountManager	17
9 State Transition Diagrams	19
9.1 State Transition Diagrams for IpAccountManager.....	19
9.1.1 Active State.....	19
9.1.2 Notifications created State	19
10 Account Management Service Properties	19
11 Data Definitions	20
11.1 Account Management Data Definitions	20
11.1.1 IpAppAccountManager	20
11.1.2 IpAppAccountManagerRef.....	20
11.1.3 IpAccountManager	20
11.1.4 IpAccountManagerRef.....	20
11.1.5 TpBalanceQueryError.....	21
11.1.6 TpChargingEventName	21
11.1.7 TpBalanceInfo	21
11.1.8 TpChargingEventInfo	22
11.1.9 TpChargingEventCriteria.....	22
11.1.10 TpChargingEventNameSet	22
11.1.11 TpChargingEventCriteriaResult	22
11.1.12 TpChargingEventCriteriaResultSet	22
11.1.13 TpBalance.....	23
11.1.14 TpBalanceSet.....	23

11.1.15	TpTransactionHistory	23
11.1.16	TpTransactionHistorySet	23
11.1.17	TpTransactionHistoryStatus	23
12	Exception Classes	24
Annex A (normative):	OMG IDL Description of Account Management SCF	25
Annex B (informative):	Contents of 3GPP OSA R4 Account Management	26
Annex C (informative):	Record of changes	27
C.1	Interfaces	27
C.1.1	New	27
C.1.2	Deprecated.....	27
C.1.3	Removed.....	27
C.2	Methods	27
C.2.1	New	27
C.2.2	Deprecated.....	27
C.2.3	Modified.....	28
C.2.4	Removed.....	28
C.3	Data Definitions	28
C.3.1	New	28
C.3.2	Modified.....	28
C.3.3	Removed.....	28
C.4	Service Properties.....	28
C.4.1	New	28
C.4.2	Deprecated.....	29
C.4.3	Modified.....	29
C.4.4	Removed.....	29
C.5	Exceptions	29
C.5.1	New	29
C.5.2	Modified.....	29
C.5.3	Removed.....	29
C.6	Others	29
History	30

iTech STANDARD PREVIEW
(standards.iteh.ai)

[SIST ES 201 915-11 V1.4.1:2005](https://standards.iteh.ai/catalog/standards/sist/299d81a2-61bf-46dc-b177-c743b2743c4/sist-es-201-915-11-v1-4-1-2005)

[https://standards.iteh.ai/catalog/standards/sist/299d81a2-61bf-46dc-b177-](https://standards.iteh.ai/catalog/standards/sist/299d81a2-61bf-46dc-b177-c743b2743c4/sist-es-201-915-11-v1-4-1-2005)

[c743b2743c4/sist-es-201-915-11-v1-4-1-2005](https://standards.iteh.ai/catalog/standards/sist/299d81a2-61bf-46dc-b177-c743b2743c4/sist-es-201-915-11-v1-4-1-2005)

Intellectual Property Rights

IPRs essential or potentially essential to the present document may have been declared to ETSI. The information pertaining to these essential IPRs, if any, is publicly available for **ETSI members and non-members**, and can be found in ETSI SR 000 314: "*Intellectual Property Rights (IPRs); Essential, or potentially Essential, IPRs notified to ETSI in respect of ETSI standards*", which is available from the ETSI Secretariat. Latest updates are available on the ETSI Web server (<http://webapp.etsi.org/IPR/home.asp>).

Pursuant to the ETSI IPR Policy, no investigation, including IPR searches, has been carried out by ETSI. No guarantee can be given as to the existence of other IPRs not referenced in ETSI SR 000 314 (or the updates on the ETSI Web server) which are, or may be, or may become, essential to the present document.

Foreword

This ETSI Standard (ES) has been produced by ETSI Technical Committee Services and Protocols for Advanced Networks (SPAN).

The present document is part 11 of a multi-part deliverable covering Open Service Access (OSA); Application Programming Interface (API), as identified below. The API specification (ES 201 915) is structured in the following parts:

- Part 1: "Overview";
- Part 2: "Common Data Definitions";
- Part 3: "Framework";
- Part 4: "Call Control SCF";
- Part 5: "User Interaction SCF"; [SIST ES 201 915-11 V1.4.1:2005](https://standards.iteh.ai/catalog/standards/sist/299d81a2-6fbf-46dc-b177-c743fb2743c4/sist-es-201-915-11-v1-4-1-2005)
- Part 6: "Mobility SCF"; <https://standards.iteh.ai/catalog/standards/sist/299d81a2-6fbf-46dc-b177-c743fb2743c4/sist-es-201-915-11-v1-4-1-2005>
- Part 7: "Terminal Capabilities SCF";
- Part 8: "Data Session Control SCF";
- Part 9: "Generic Messaging SCF";
- Part 10: "Connectivity Manager SCF";
- Part 11: "Account Management SCF";**
- Part 12: "Charging SCF".

The present document has been defined jointly between ETSI, The Parlay Group (<http://www.parlay.org>) and the 3GPP, in co-operation with a number of JAIN™ Community (<http://www.java.sun.com/products/jain>) member companies.

The present document forms part of the Parlay 3.3 set of specifications.

The present document is equivalent to 3GPP TS 29.198-11 V4.4.0 (Release 4).

1 Scope

The present document is part 11 of the Stage 3 specification for an Application Programming Interface (API) for Open Service Access (OSA).

The OSA specifications define an architecture that enables application developers to make use of network functionality through an open standardised interface, i.e. the OSA APIs.

The present document specifies the Account Management Service Capability Feature (SCF) aspects of the interface. All aspects of the Account Management SCF are defined here, these being:

- Sequence Diagrams
- Class Diagrams
- Interface specification plus detailed method descriptions
- State Transition diagrams
- Data Definitions
- IDL Description of the interfaces

The process by which this task is accomplished is through the use of object modelling techniques described by the Unified Modelling Language (UML).

iTeh STANDARD PREVIEW

2 References (standards.iteh.ai)

The references listed in clause 2 of ES 201 915-1 contain provisions which, through reference in this text, constitute provisions of the present document.

<https://standards.iteh.ai/catalog/standards/sist/299d81a2-6bf4-46dc-b177-7438-261914141205>

ETSI ES 201 915-1: "Open Service Access (OSA); Application Programming Interface (API); Part 1: Overview (Parlay 3)".

3 Definitions and abbreviations

3.1 Definitions

For the purposes of the present document, the terms and definitions given in ES 201 915-1 apply.

3.2 Abbreviations

For the purposes of the present document, the abbreviations defined in ES 201 915-1 apply.

4 Account Management SCF

The following clauses describe each aspect of the Account Management Service Capability Feature (SCF).

The order is as follows:

- The Sequence diagrams give the reader a practical idea of how each of the SCF is implemented.
- The Class relationships clause show how each of the interfaces applicable to the SCF, relate to one another.
- The Interface specification clause describes in detail each of the interfaces shown within the Class diagram part.
- The State Transition Diagrams (STD) show the transition between states in the SCF. The states and transitions are well-defined; either methods specified in the Interface specification or events occurring in the underlying networks cause state transitions.
- The Data Definitions clause shows a detailed expansion of each of the data types associated with the methods within the classes. Note that some data types are used in other methods and classes and are therefore defined within the Common Data types part of the present document.

4.1 General requirements on support of methods

An implementation of this API which supports or implements a method described in the present document, shall support or implement the functionality described for that method, for at least one valid set of values for the parameters of that method.

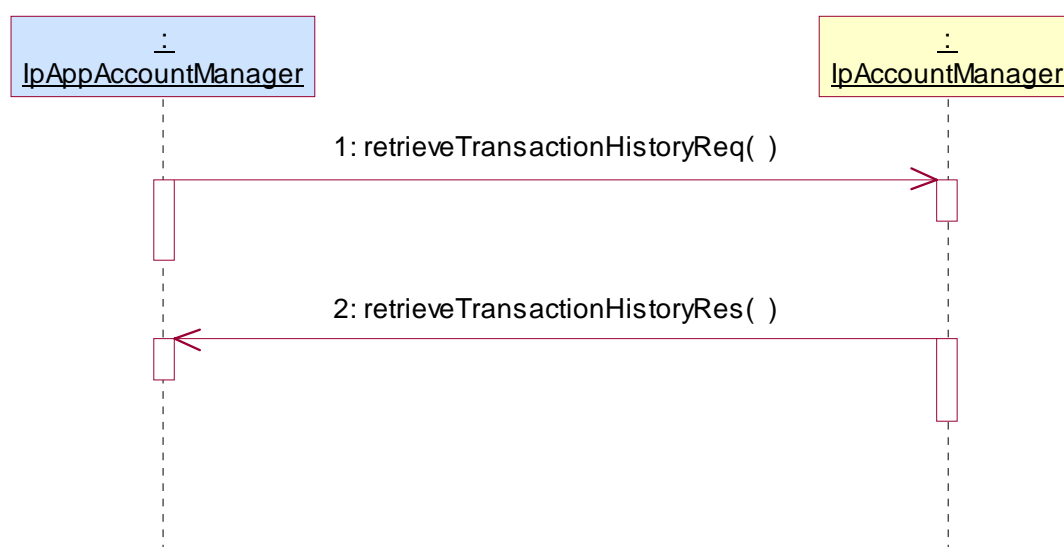
Where a method is not supported by an implementation of a Service interface, the exception P_METHOD_NOT_SUPPORTED shall be returned to any call of that method.

Where a method is not supported by an implementation of an Application interface, a call to that method shall be possible, and no exception shall be returned.

<https://standards.iteh.ai/catalog/standards/sist/299d81a2-6fbf-46dc-b177-c743fb2743c4/sist-es-201-915-11-v1-4-1-2005>

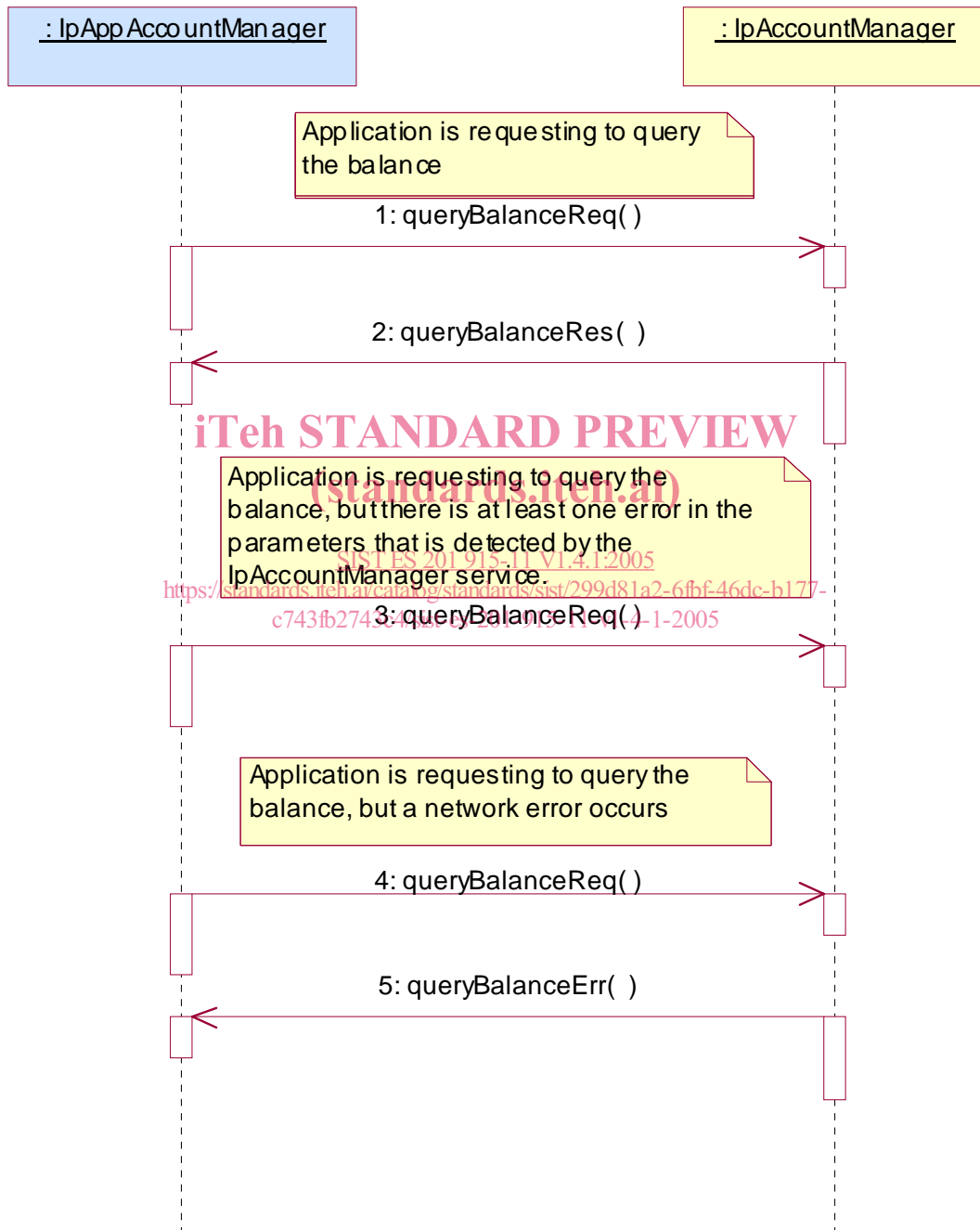
5 Sequence Diagrams

5.1 Standard Transaction History Retrieval



- 1: This message is used by the application to retrieve a transaction history for a certain subscriber's account.
- 2: This method passes the result of the transaction history retrieval request for a specific user to its callback object.

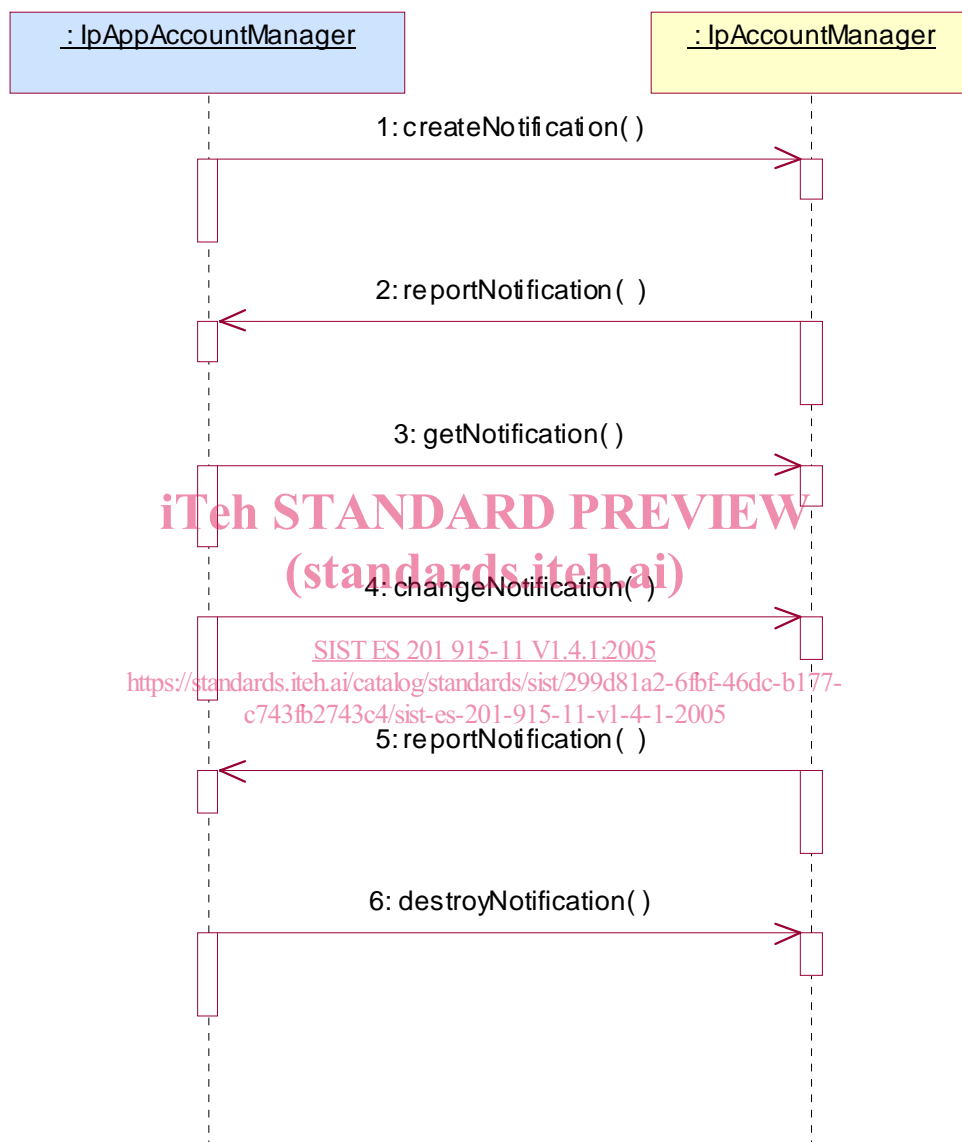
5.2 Standard Query Handling



- 1: This message is used to query the balance of the account of one or several users.
- 2: This message passes the result of the balance query for one or several users to its callback object.

- 3: This scenario shows the case where at least one error in the parameters of the message is detected by the IpAccountManager object. An exception will be thrown.
- 4: This scenario shows the case where a network error occurs.
- 5: This message passes the error of the balance query. No exception is thrown.

5.3 Standard Notification handling



- 1: This message is used by the application to request notifications from the IpAccountManager service on certain criteria for one or several users.
- 2: This message is used by the IpAccountManager service to report a charging event that meets the criteria set in the createNotification message.
- 3: The application can request the current criteria set in the IpAccountManager service by invoking the getNotification method.
- 4: This message is used by the application to change the criteria initially created by createNotification, and previously obtained by getNotification.
- 5: This message is used by the IpAccountManager service to report a charging event that meets the new criteria.

- 6: This method is used by the application to disable the charging notifications.

6 Class Diagrams

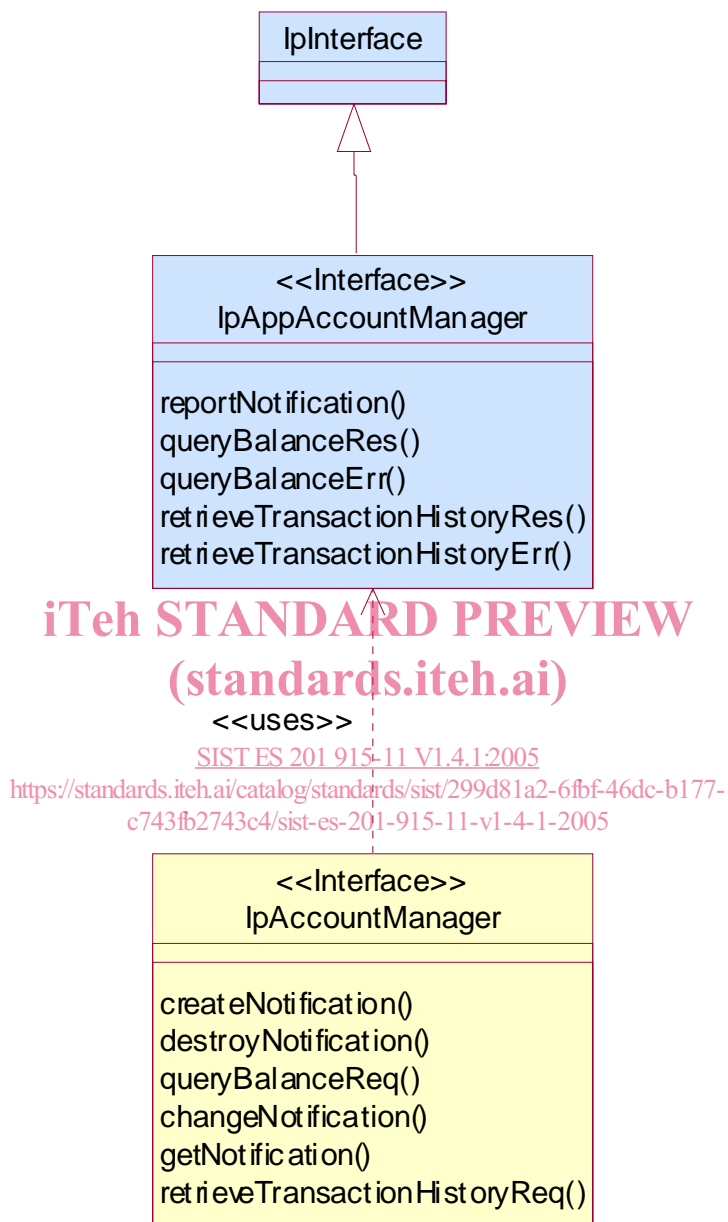


Figure 1: Application Interfaces