

INTERNATIONAL STANDARD

ISO 10087

First edition
1990-11-15

Small craft — Hull identification — Coding system

Navires de plaisance — Identification des coques — Système de codage
iTeh STANDARD PREVIEW
(standards.iteh.ai)

ISO 10087:1990

<https://standards.iteh.ai/catalog/standards/sist/babe0418-feb0-4bb9-9d98-ed5a5d806c6a/iso-10087-1990>



Reference number
ISO 10087:1990(E)

Foreword

ISO (the International Organization for Standardization) is a worldwide federation of national standards bodies (ISO member bodies). The work of preparing International Standards is normally carried out through ISO technical committees. Each member body interested in a subject for which a technical committee has been established has the right to be represented on that committee. International organizations, governmental and non-governmental, in liaison with ISO, also take part in the work. ISO collaborates closely with the International Electrotechnical Commission (IEC) on all matters of electrotechnical standardization.

Draft International Standards adopted by the technical committees are circulated to the member bodies for voting. Publication as an International Standard requires approval by at least 75 % of the member bodies casting a vote.

International Standard ISO 10087 was prepared by Technical Committee ISO/TC 188, *Small craft*.

ITeH STANDARD PREVIEW
(standards.iteh.ai)

ISO 10087:1990

<https://standards.iteh.ai/catalog/standards/sist/babe0418-feb0-4bb9-9d98-ed5a5d806c6a/iso-10087-1990>

© ISO 1990

All rights reserved. No part of this publication may be reproduced or utilized in any form or by any means, electronic or mechanical, including photocopying and microfilm, without permission in writing from the publisher.

International Organization for Standardization
Case Postale 56 • CH-1211 Genève 20 • Switzerland

Printed in Switzerland

Small craft — Hull identification — Coding system

1 Scope

This International Standard establishes a coding system to achieve identification of any small craft hull, concerning

- identification code of the manufacturer;
- identification code of the country;
- serial number;
- month and year of production;
- model year.

It applies to small craft of all types and materials with a length of hull, L_h , of more than 2.5 m. It does not apply to beach or bathing toys.

NOTE 1 This International Standard represents a code of good practice, but compliance with it does not confer immunity from relevant legal requirements.

2 Normative reference

The following standard contains provisions which, through reference in this text, constitute provisions of this International Standard. At the time of publication, the edition indicated was valid. All standards are subject to revision, and parties to agreements based on this International Standard are encouraged to investigate the possibility of applying the most recent edition of the standard indicated below. Members of IEC and ISO maintain registers of currently valid International Standards.

ISO 3166:1988, *Codes for the representation of names of countries*.

3 Definition

3.1 Hull Identification Number (HIN): Unique series of numerals and letters permanently affixed to a craft hull.

4 Composition of Hull Identification Number (HIN)

A HIN shall consist of 12 consecutive characters as given in 4.1 to 4.4 without intervening spaces, solidi (slashes) or dashes.

4.1 The first three characters are the unique identification code of the manufacturer, assigned by a national authority or recognized organization. These characters shall be letters.

4.2 The next two characters designate the code of the country in which the craft was manufactured, as specified in ISO 3166.

4.3 The following three characters indicate the serial number of the craft as assigned by the manufacturer. The serial number may consist of numerals and/or letters, except for letters I, O and Q.

4.4 The last four characters designate the month and year of production and the model year.

The month of production shall be coded according to table 1.

Table 1

Month	Code	Month	Code
January	A	July	G
February	B	August	H
March	C	September	I
April	D	October	J
May	E	November	K
June	F	December	L

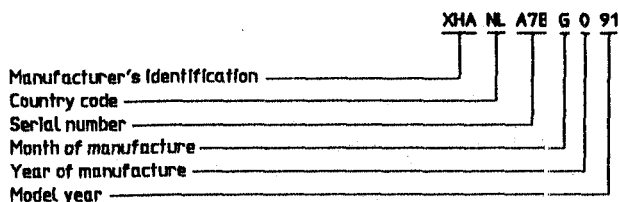
The year of manufacture shall be identified by the last numeral of the production year.

The model year shall be identified by the last two numerals of the year in question.

NOTE 2 The model year is a twelve-month period, during which the particular craft model is intended to be sold.

Craft designated for a model year may be built during a preceding calendar year.

4.5 HIN example: XHANLA7BG091



5 Requirements

5.1 Size

The characters shall be at least 6 mm high.

5.2 Marking

Each HIN shall be carved, burned, stamped, embossed, moulded, or otherwise permanently affixed so that alteration, removal, or replacement will be obvious. If on a plate, the plate shall be fastened so that its removal will cause scarring to the surrounding area.

5.3 Location

The HIN shall be visible on the starboard outboard side of the transom, or on the starboard outboard side of the hull if there is no transom or it is impractical to use the transom.

The HIN shall be marked

- within 300 mm of the stern, and
- within 50 mm of the transom top, gunwale, hull/deck joint or its capping, whichever is lowest.

On catamarans the HIN shall be affixed to the starboard hull.

On craft which have readily removable hulls like pontoon boats and some types of catamarans, the HIN shall be affixed to the aft cross-beam within 300 mm of the starboard hull attachment.

On inflatable boats the HIN shall be affixed on the rigid aft cross-beam or motor bracket, within 300 mm of the starboard hull attachment. If the HIN is not readily visible due to the construction of the boat, the hull identification number may be applied additionally to some other suitable structure of the boat, such as the console assembly.

5.4 Duplicate HIN

A duplicate HIN shall be affixed to a non-removable part of the hull in a hidden location in the interior or beneath a fitting or item of hardware. Catamarans shall display this hidden HIN in or on both hulls.

5.5 Time of HIN marking

The HIN shall be affixed to the craft during the construction of the hull. In no case shall the craft leave the hull manufacturer's premises without the HIN being affixed.

5.6 Display format

The HIN shall be displayed in alphanumerical characters (arabic numerals and upper case letters) and shall read from left to right.

6 Additional information

If additional information is displayed on the craft within 50 mm of the HIN, it shall be separated from the HIN by means of borders or it shall be on a separate label so that it will not be interpreted as part of the HIN.

UDC 629.125.011:003.26

Descriptors: shipbuilding, yachts, ship hulls, designation, International identification number, coded representation.

Price based on 2 pages