

INTERNATIONAL STANDARD

**Fibre optic interconnecting devices and passive components – Fibre optic
connector interfaces –
Part 6: Type MU connector family**

IEC 61754-6:2013

<https://standards.iteh.ai/standards/iec/144e943f-1b2d-4413-bc9a-5e75b16e5ad9/iec-61754-6-2013>



THIS PUBLICATION IS COPYRIGHT PROTECTED
Copyright © 2013 IEC, Geneva, Switzerland

All rights reserved. Unless otherwise specified, no part of this publication may be reproduced or utilized in any form or by any means, electronic or mechanical, including photocopying and microfilm, without permission in writing from either IEC or IEC's member National Committee in the country of the requester.
If you have any questions about IEC copyright or have an enquiry about obtaining additional rights to this publication, please contact the address below or your local IEC member National Committee for further information.

IEC Central Office
3, rue de Varembe
CH-1211 Geneva 20
Switzerland

Tel.: +41 22 919 02 11
Fax: +41 22 919 03 00
info@iec.ch
www.iec.ch

About the IEC

The International Electrotechnical Commission (IEC) is the leading global organization that prepares and publishes International Standards for all electrical, electronic and related technologies.

About IEC publications

The technical content of IEC publications is kept under constant review by the IEC. Please make sure that you have the latest edition, a corrigenda or an amendment might have been published.

Useful links:

IEC publications search - www.iec.ch/searchpub

The advanced search enables you to find IEC publications by a variety of criteria (reference number, text, technical committee,...).

It also gives information on projects, replaced and withdrawn publications.

IEC Just Published - webstore.iec.ch/justpublished

Stay up to date on all new IEC publications. Just Published details all new publications released. Available on-line and also once a month by email.

Electropedia - www.electropedia.org

The world's leading online dictionary of electronic and electrical terms containing more than 30 000 terms and definitions in English and French, with equivalent terms in additional languages. Also known as the International Electrotechnical Vocabulary (IEV) on-line.

Customer Service Centre - webstore.iec.ch/csc

If you wish to give us your feedback on this publication or need further assistance, please contact the Customer Service Centre: csc@iec.ch.

IEC 61754-6:2013

<https://standards.iteh.ai/en/standards/iec/144e943f-1b2d-4413-bc9a-5e75b16e5ad9/iec-61754-6-2013>

INTERNATIONAL STANDARD

**Fibre optic interconnecting devices and passive components – Fibre optic
connector interfaces –
Part 6: Type MU connector family**

INTERNATIONAL
ELECTROTECHNICAL
COMMISSION

PRICE CODE **XC**

ICS 33.180.20

ISBN 978-2-8322-1010-9

Warning! Make sure that you obtained this publication from an authorized distributor.

CONTENTS

FOREWORD.....	5
1 Scope.....	7
2 Normative references	7
3 Description	7
4 Interfaces	7
Annex A (informative) Configuration of type MU-A connector set	74
Annex B (informative) Configuration of type MU-B connector set	75
Annex C (informative) Floating 2-port connector plug.....	76
Bibliography.....	77
Figure 1 – Simplex plug connector interface – Push/pull	11
Figure 2 – 4,5 mm duplex plug connector interface – Push/pull.....	14
Figure 3 – Simplex adaptor connector interface – Push/pull.....	17
Figure 4 – Gauge pin for resilient alignment sleeve.....	19
Figure 5 – 4,5 mm duplex adaptor connector interface – Push/pull.....	20
Figure 6 – 8-port adaptor connector interface – Push/pull.....	23
Figure 7 – Plug connector interface – For printed board housings.....	25
Figure 8 – Sleeve holder interface	27
Figure 9 – 2-port backplane housing interface.....	30
Figure 10 – 2-port printed board housing interface.....	34
Figure 11 – 8-port backplane housing interface.....	37
Figure 12 – 8-port printed board housing interface.....	41
Figure 13 – Simplex active device receptacle interface.....	43
Figure 14 – Detail of the mechanical stop for rigid bore alignment feature.....	45
Figure 15 – 4,5 mm duplex active device receptacle interface.....	46
Figure 16 – Detail of the mechanical stop for rigid bore alignment feature.....	48
Figure 17 – 6,25 mm duplex active device receptacle interface.....	49
Figure 18 – Detail of the mechanical stop for rigid bore alignment feature.....	51
Figure 19 – Plug connector interface for printed board housings, APC.....	53
Figure 20 – Simplex plug connector interface – Push/pull, APC	56
Figure 21 – 4,5 mm duplex plug connector interface – Push/pull, APC.....	59
Figure 22 – 6,25 mm duplex plug connector interface – Push/pull, APC.....	62
Figure 23 – 6,25 mm duplex plug connector interface – Push/pull.....	64
Figure 24 – 6,25 mm duplex adaptor connector interface	67
Figure 25 – Horizontal duplex plug connector interface – Push/pull.....	69
Figure 26 – Horizontal duplex adaptor connector interface.....	72
Figure A.1 – Configuration of type MU-A connector set.....	74
Figure B.1 – Configuration of type MU-B connector set.....	75
Figure C.1 – Floating 2-port connector plug	76
Table 1 – MU-A connector set.....	9

Table 2 – MU-B connector set.....	9
Table 3 – MU receptacles	10
Table 4 – Dimensions of the simplex plug connector interface	12
Table 5 – Grade.....	13
Table 6 – Dimensions of the 4,5 mm duplex plug connector interface	15
Table 7 – Grade.....	16
Table 8 – Dimensions of the simplex adaptor connector interface	18
Table 9 – Grade.....	18
Table 10 – Gauge pin dimensions	19
Table 11 – Dimensions of the 4,5 mm duplex adaptor connector interface	21
Table 12 – Grade.....	22
Table 13 – Dimensions of the 8-port adaptor connector interface	24
Table 14 – Grade.....	24
Table 15 – Dimensions of the plug connector interface	26
Table 16 – Grade.....	26
Table 17 – Dimensions of the sleeve holder interface	28
Table 18 – Grade.....	28
Table 19 – Dimensions of the 2-port backplane housing interface.....	31
Table 20 – Grade.....	32
Table 21 – Dimensions of the 2-port printed board housing interface	35
Table 22 – Dimensions of the 8-port backplane housing interface	38
Table 23 – Grade.....	39
Table 24 – Dimensions of the 8-port printed board housing interface	42
Table 25 – Dimensions of the simplex active device receptacle interface	44
Table 26 – Alignment feature grade	45
Table 27 – Dimensions of the mechanical stop for rigid bore alignment feature	45
Table 28 – Mechanical stop feature grade.....	46
Table 29 – Dimensions of the 4,5 mm duplex active device receptacle interface	47
Table 30 – Alignment feature grade	48
Table 31 – Dimensions of the mechanical stop for rigid bore alignment feature	48
Table 32 – Mechanical stop feature grade.....	49
Table 33 – Dimensions of the 6,25 mm duplex active device receptacle interface	50
Table 34 – Alignment feature grade	51
Table 35 – Dimensions of the mechanical stop for rigid bore alignment feature	51
Table 36 – Mechanical stop feature grade.....	52
Table 37 – Dimensions of the plug connector interface for printed board housings, APC.....	54
Table 38 – Dimensions of the simplex plug connector interfaces, APC.....	57
Table 39 – Dimensions of the 4,5 mm duplex plug connector interfaces, APC.....	60
Table 40 – Dimensions of the 6,25 mm duplex plug connector interface, APC.....	63
Table 41 – Dimensions of the 6,25 mm duplex plug connector interface.....	65
Table 42 – Grade.....	66
Table 43 – Dimensions of the 6,25 mm duplex adaptor connector interface	68
Table 44 – Grade.....	68

Table 45 – Dimensions of the horizontal duplex plug connector interface..... 70
Table 46 – Grade..... 71
Table 47 – Dimensions of the horizontal duplex adaptor connector interface..... 73
Table 48 – Grade..... 73
Table C.1 – Dimensions table for 2-port connector plug 76

Witholdrawn

iTech Standards
(<https://standards.iteh.ai>)
Document Preview

<https://standards.iteh.ai/standards/iec/14c943f-1b2d-4413-bc9a-5e75b16e5ad9/iec-61754-6-2013>

INTERNATIONAL ELECTROTECHNICAL COMMISSION

**FIBRE OPTIC INTERCONNECTING
DEVICES AND PASSIVE COMPONENTS –
FIBRE OPTIC CONNECTOR INTERFACES –****Part 6: Type MU connector family**

FOREWORD

- 1) The International Electrotechnical Commission (IEC) is a worldwide organization for standardization comprising all national electrotechnical committees (IEC National Committees). The object of IEC is to promote international co-operation on all questions concerning standardization in the electrical and electronic fields. To this end and in addition to other activities, IEC publishes International Standards, Technical Specifications, Technical Reports, Publicly Available Specifications (PAS) and Guides (hereafter referred to as “IEC Publication(s)”). Their preparation is entrusted to technical committees; any IEC National Committee interested in the subject dealt with may participate in this preparatory work. International, governmental and non-governmental organizations liaising with the IEC also participate in this preparation. IEC collaborates closely with the International Organization for Standardization (ISO) in accordance with conditions determined by agreement between the two organizations.
- 2) The formal decisions or agreements of IEC on technical matters express, as nearly as possible, an international consensus of opinion on the relevant subjects since each technical committee has representation from all interested IEC National Committees.
- 3) IEC Publications have the form of recommendations for international use and are accepted by IEC National Committees in that sense. While all reasonable efforts are made to ensure that the technical content of IEC Publications is accurate, IEC cannot be held responsible for the way in which they are used or for any misinterpretation by any end user.
- 4) In order to promote international uniformity, IEC National Committees undertake to apply IEC Publications transparently to the maximum extent possible in their national and regional publications. Any divergence between any IEC Publication and the corresponding national or regional publication shall be clearly indicated in the latter.
- 5) IEC itself does not provide any attestation of conformity. Independent certification bodies provide conformity assessment services and, in some areas, access to IEC marks of conformity. IEC is not responsible for any services carried out by independent certification bodies.
- 6) All users should ensure that they have the latest edition of this publication.
- 7) No liability shall attach to IEC or its directors, employees, servants or agents including individual experts and members of its technical committees and IEC National Committees for any personal injury, property damage or other damage of any nature whatsoever, whether direct or indirect, or for costs (including legal fees) and expenses arising out of the publication, use of, or reliance upon, this IEC Publication or any other IEC Publications.
- 8) Attention is drawn to the Normative references cited in this publication. Use of the referenced publications is indispensable for the correct application of this publication.
- 9) Attention is drawn to the possibility that some of the elements of this IEC Publication may be the subject of patent rights. IEC shall not be held responsible for identifying any or all such patent rights.

International Standard IEC 61754-6 has been prepared by subcommittee 86B: Fibre optic interconnecting devices and passive components, of IEC technical committee 86: Fibre optics.

This second edition cancels and replaces the first edition published in 1997 and constitutes a technical revision.

This edition includes the following significant technical changes with respect to the previous edition:

- a) addition of standard references;
- b) revision of intermateability.

The text of this standard is based on the following documents:

FDIS	Report on voting
86B/3627/FDIS	86B/3662/RVD

Full information on the voting for the approval of this standard can be found in the report on voting indicated in the above table.

This publication has been drafted in accordance with the ISO/IEC Directives, Part 2.

A list of all parts of the IEC 61754 series, under the general title *Fibre optic interconnecting devices and passive components – Fibre optic connector interfaces*, can be found on the IEC website.

Future standards in this series will carry the new general title as cited above. Titles of existing standards in this series will be updated at the time of the next edition.

The committee has decided that the contents of this publication will remain unchanged until the stability date indicated on the IEC web site under "<http://webstore.iec.ch>" in the data related to the specific publication. At this date, the publication will be

- reconfirmed,
- withdrawn,
- replaced by a revised edition, or
- amended.

A bilingual version of this publication may be issued at a later date.

FIBRE OPTIC INTERCONNECTING DEVICES AND PASSIVE COMPONENTS – FIBRE OPTIC CONNECTOR INTERFACES –

Part 6: Type MU connector family

1 Scope

This part of IEC 61754 defines the standard interface dimensions for type MU family of connectors.

2 Normative references

The following documents, in whole or in part, are normatively referenced in this document and are indispensable for its application. For dated references, only the edition cited applies. For undated references, the latest edition of the referenced document (including any amendments) applies.

IEC 61755-3-1, *Fibre optic connector optical interfaces – Part 3-1: Optical interface, 2,5 mm and 1,25 mm diameter cylindrical full zirconia PC ferrule, single mode fibre*

IEC 61755-3-2, *Fibre optic connector optical interfaces – Part 3-2: Optical interface, 2,5 mm and 1,25 mm diameter cylindrical full zirconia ferrules for 8 degrees angled-PC single mode fibres*

3 Description

The parent connector for type MU connector family is a miniature single-position plug which is characterized by a cylindrical, spring-loaded butting ferrule(s) of a 1,25 mm typical diameter, and a push-pull coupling mechanism. The optical alignment mechanism of the connectors is of a rigid hole or a resilient sleeve style.

This part 6 type MU connector family defines the standard interface dimensions of active device receptacles for the type MU connectors. The receptacles are used to retain the connector plugs and mechanically maintain the optical datum target of the plugs at a defined position within the receptacle housings.

4 Interfaces

This standard contains the following standard interfaces.

- Interface IEC 61754-6-1: Simplex plug connector interface – Push/pull (See Figure 1)
- Interface IEC 61754-6-2: 4,5 mm duplex plug connector interface – Push/pull (See Figure 2)
- Interface IEC 61754-6-3: Simplex adaptor connector interface – Push/pull (See Figure 3)
- Interface IEC 61754-6-4: 4,5 mm duplex adaptor connector interface – Push/pull (see Figure 5)
- Interface IEC 61754-6-5: 8-port adaptor connector interface – Push/pull (See Figure 6)
- Interface IEC 61754-6-6: Plug connector interface – for printed board housings (See Figure 7)
- Interface IEC 61754-6-7: Sleeve holder interface – for printed board housings (See Figure 8)
- Interface IEC 61754-6-8: 2-port backplane housing interface – Self-retentive (See Figure 9)

- Interface IEC 61754-6-9: 2-port printed board housing interface – Self-retentive (See Figure 10)
- Interface IEC 61754-6-10: 8-port backplane housing interface – Self-retentive (See Figure 11)
- Interface IEC 61754-6-11: 8-port printed board housing interface – Self-retentive (See Figure 12)
- Interface IEC 61754-6-12: Simplex active device receptacle interface – for PC connector plug (See Figure 13)
- Interface IEC 61754-6-13: 4,5 mm duplex active device receptacle interface – for PC connector plug (See Figure 15)
- Interface IEC 61754-6-14: 6,25 mm duplex active device receptacle interface – for PC connector plug (See Figure 17)
- Interface IEC 61754-6-15: Plug connector interface – for printed board housings, APC 8 degrees (See Figure 19)
- Interface IEC 61754-6-16: Simplex plug connector interface – Push/pull, APC 8 degrees (See Figure 20)
- Interface IEC 61754-6-17: 4,5 mm duplex plug connector interface – Push/pull, APC 8 degrees (See Figure 21)
- Interface IEC 61754-6-18: 6,25 mm duplex plug connector interface – Push/pull, APC 8 degrees (See Figure 22)
- Interface IEC 61754-6-19: 6,25 mm duplex plug connector interface – Push/pull (See Figure 23)
- Interface IEC 61754-6-20: 6,25 mm duplex adaptor connector interface – Push/pull (See Figure 24)
- Interface IEC 61754-6-21: Horizontal duplex plug connector interface – Push/pull (See Figure 25)
- Interface IEC 61754-6-22: Horizontal duplex adaptor connector interface – Push/pull (See Figure 26)

The plugs of interfaces IEC 61754-6-1, IEC 61754-6-2, IEC 61754-6-6, IEC 61754-6-19 and IEC 61754-6-21 have a ferrule(s) with a spherically polished endface, and realize physical contact (PC). The plugs of interfaces IEC 61754-6-15, IEC 61754-6-16, IEC 61754-6-17 and IEC 61754-6-18 have a ferrule(s) with a spherically polished angled endface and realize angled PC (APC).

The type MU connector family comprises two types of connector set: MU-A connector set (see Annex A) and MU-B connector set (see Annex B). The MU-A connector set is a plug/adaptor configuration with a push-pull coupling mechanism. The MU-B connector set is a plug-in type back-plane connector configuration which is plug/backplane and printed board housings/plug for printed board housing/sleeve holder configuration and is equipped with a self-retentive mechanism.

The type MU-A connector set consists of simplex and duplex plugs, and simplex, duplex and 8-port adaptors. The plugs are common to the backplane connector housings of the type MU-B connector set.

The type MU-B connector set consists of 2-port and 8-port backplane and printed board connector housings, simplex and duplex plugs, plug for printed board connector housings, and sleeve holder. The plug for printed board connector housing is used as a jack together with the sleeve holder. The jack is attached into the printed board connector housing.

TableS 1, 2 and 3 show the intermateability of the standard interfaces. It shall be noted however that in order to obtain the designated optical performance, any plug shall be connected to a counterpart plug whose ferrule end is polished to the same condition.

Table 1 – MU-A connector set

Plugs	Adaptors				
	61754-6-3	61754-6-4	61754-6-5	61754-6-20	61754- 6-22
61754-6-1	Mate	Mate	Mate	Mate	Mate
61754-6-2	Not mate	Mate	Mate	Not mate	Not mate
61754-6-16	Mate	Mate	Mate	Mate	Mate
61754- 6-17	Not Mate	Mate	Mate	Not Mate	Not mate
61754-6-18	Not mate	Not mate	Not mate	Mate	Not mate
61754-6-19	Not mate	Not mate	Not mate	Mate	Not mate
61754-6-21	Not mate	Not mate	Not mate	Not mate	Mate

Table 2 – MU-B connector set

Plugs	Connector housings			
	Backplane connector housing		Printed board connector housing	
	61754-6-8	61754-6-10	61754-6-9	61754-6-11
61754-6-1	Mate	Mate	Not mate	Not mate
61754-6-2	Mate	Mate	Not mate	Not mate
61754-6-6 with 61754-6-7	Not mate	Not mate	Mate	Mate
61754-6-15 with 61754- 6-7	Not mate	Not mate	Mate	Mate
61754-6-16	Mate	Mate	Not mate	Not mate
61754-6-17	Mate	Mate	Not mate	Not mate
61754-6-18	Not mate	Not mate	Not mate	Not mate
61754-6-19	Not mate	Not mate	Not mate	Not mate
61754-6-21	Not mate	Not mate	Not mate	Not mate

Table 3 – MU receptacles

Plugs	Receptacles		
	61754-6-12	61754-6-13	61754-6-14
61754-6-1	Mate	Mate	Mate
61754-6-2	Not mate	Mate	Not mate
61754-6-16	Not mate	Not mate	Not mate
61754-6-17	Not mate	Not mate	Not mate
61754-6-18	Not mate	Not mate	Not mate
61754-6-19	Not mate	Not mate	Mate
61754-6-21	Not mate	Not mate	Not mate

Figure 1 is an example of a simplex plug connector interface. Table 4 gives dimensions of the simplex plug connector interface and Table 5 gives the grade of the simplex plug connector interface.

iTech Standards
 (https://standards.iteh.ai)
 Document Preview

IEC 61754-6:2013

<https://standards.iteh.ai/standards/iec/14e943f-1b2d-4413-bc9a-5e75b16e5ad9/iec-61754-6-2013>



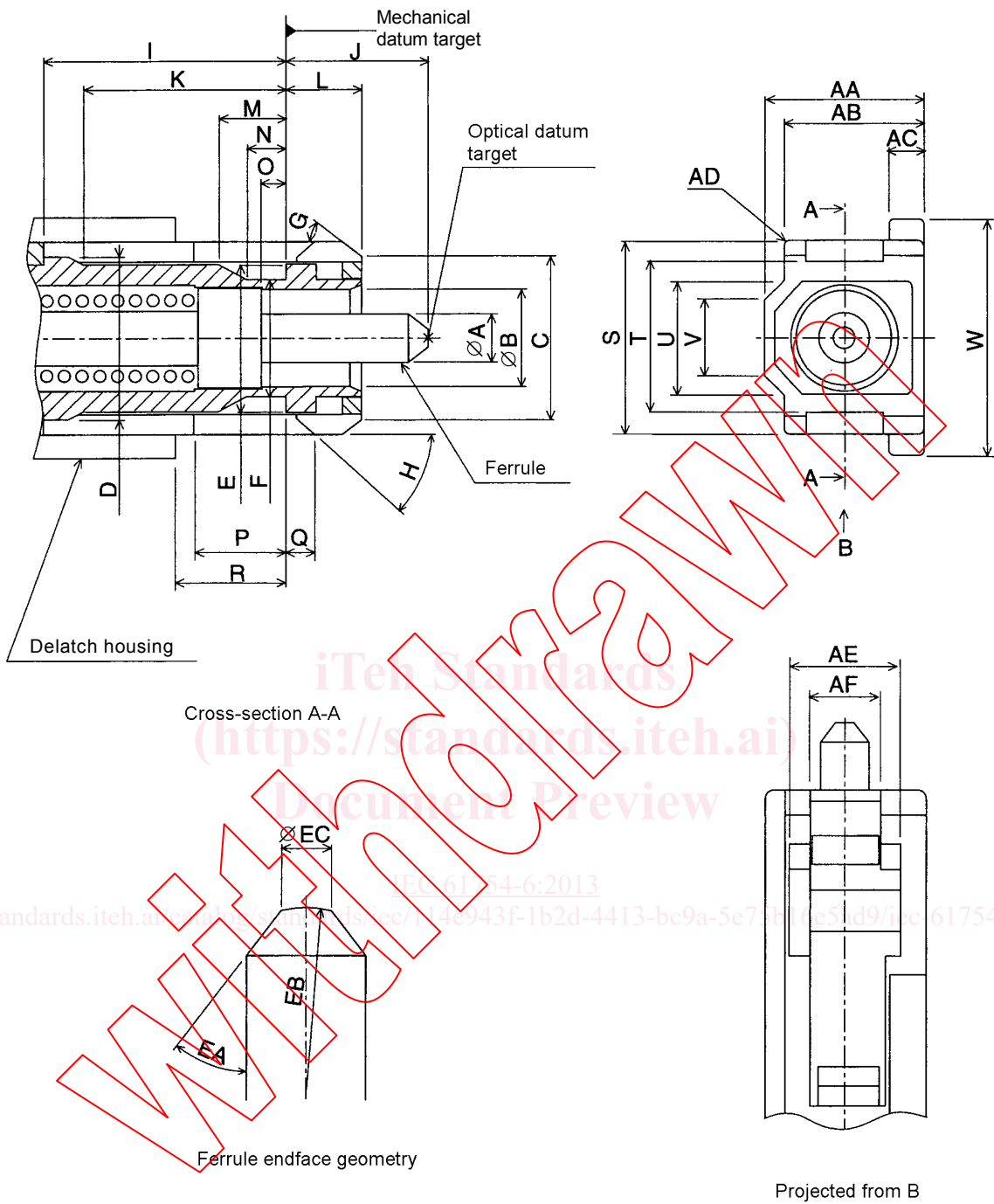


Figure 1 – Simplex plug connector interface – Push/pull

Table 4 – Dimensions of the simplex plug connector interface

Reference	Dimensions		Remarks
	Minimum	Maximum	
A		1,249 5 mm	^a , see Table 5
B	2,6 mm	2,7 mm	
C	4,6 mm	4,8 mm	
D	4,65 mm	4,75 mm	
E	4,3 mm	4,4 mm	
F	3,3 mm	3,4 mm	
G	25°	35°	Angle
H	25°	35°	Angle
I	6,55 mm	–	^b
J	4,2 mm	4,5 mm	^c
K	5,5 mm	–	
L	2,4 mm	2,5 mm	
M	1,5 mm	–	
N	0,6 mm	–	
O	0,5 mm	–	
P	2,6 mm	–	^b
Q	1 mm	1,1 mm	^b and ^d
R	2,65 mm	2,9 mm	^b
S	5,5 mm	5,6 mm	
T	4,3 mm	4,5 mm	
U	–	3,7 mm	
V	–	2,4 mm	
W	6,5 mm	6,6 mm	
AA	4,3 mm	4,4 mm	
AB	3,85 mm	3,95 mm	
AC	0,7 mm	0,9 mm	
AD	0,2 mm	–	Radius
AE	3 mm	–	
AF	2,2 mm	2,3 mm	
EA	32 5°	45°	Angle, ^e
EB	5 mm	30 mm	Radius, ^f
EC	0,45 mm	0,73 mm	Diameter

^a A chamfer or radius is allowed to a maximum depth of 0,5 mm from the ferrule endface.

^b The detach housing shall be movable toward the right and the left directions. These dimensions are given when the coupling sleeve is moved in its most right-direction position.

^c The dimension J is given for the plug endface when not mated. It is noticed that the ferrule is movable by a certain axial compression force with direct contacting endfaces, and therefore the dimension J is variable. Ferrule compression force shall be 5,5 N to 6,5 N when the position of the optical datum target from the mechanical datum target is moved in the range of 3,9 mm to 4,1 mm. In addition, the dimension J shall become less than 3,25 mm with a relatively large axial compression force.

^d The right-side position of Q shall become the left-side position to the mechanical datum target when the coupling sleeve is moved to its most left-direction position.

^e 40° to 45° are desirable to minimize debris for backplane connectors.

^f Dome eccentricity of the spherically polished ferrule endface shall be less than 70 µm.