



# SLOVENSKI STANDARD SIST EN ISO 14042:2001

01-april-2001

---

**Ravnanje z okoljem - Ocenjevanje življenjskega cikla - Ovrednotenje vplivov na okolje**

Environmental management - Life cycle assessment - Life cycle impact assessment (ISO 14042:2000)

Umweltmanagement - Ökobilanz - Wirkungsabschätzung (ISO 14042:2000)

Management environnemental - Analyse du cycle de vie - Evaluation de l'impact du cycle de vie (ISO 14042:2000)

**iTeh STANDARD PREVIEW**

(standards.iteh.ai)

SIST EN ISO 14042:2001

**Ta slovenski standard je istoveten z: EN ISO 14042:2000**

<https://standards.iteh.ai/catalog/standards/sist/9c5a1200-444c-45ab-8f1d-b6c5812850cc/sist-en-iso-14042-2001>

---

**ICS:**

13.020.10	Ravnanje z okoljem	Environmental management
13.020.60	Življenjski ciklusi izdelkov	Product life-cycles

**SIST EN ISO 14042:2001**

**en**

**iTeh STANDARD PREVIEW**  
**(standards.iteh.ai)**

[SIST EN ISO 14042:2001](#)

<https://standards.iteh.ai/catalog/standards/sist/9c5a1200-444c-45ab-8f1d-b8e58f2830cc/sist-en-iso-14042-2001>

---

ICS 13.020.10; 13.020.60

English version

## Environmental management - Life cycle assessment - Life cycle impact assessment (ISO 14042:2000)

Management environnemental - Analyse du cycle de vie -  
Evaluation de l'impact du cycle de vie (ISO 14042:2000)

Umweltmanagement - Ökobilanz - Wirkungsabschätzung  
(ISO 14042:2000)

This European Standard was approved by CEN on 1 March 2000.

CEN members are bound to comply with the CEN/CENELEC Internal Regulations which stipulate the conditions for giving this European Standard the status of a national standard without any alteration. Up-to-date lists and bibliographical references concerning such national standards may be obtained on application to the Central Secretariat or to any CEN member.

This European Standard exists in three official versions (English, French, German). A version in any other language made by translation under the responsibility of a CEN member into its own language and notified to the Central Secretariat has the same status as the official versions.

CEN members are the national standards bodies of Austria, Belgium, Czech Republic, Denmark, Finland, France, Germany, Greece, Iceland, Ireland, Italy, Luxembourg, Netherlands, Norway, Portugal, Spain, Sweden, Switzerland and United Kingdom.

(standards.iteh.ai)

[SIST EN ISO 14042:2001](https://standards.iteh.ai/catalog/standards/sist/9c5a1200-444c-45ab-8fd-b8e58f2830cc/sist-en-iso-14042-2001)

<https://standards.iteh.ai/catalog/standards/sist/9c5a1200-444c-45ab-8fd-b8e58f2830cc/sist-en-iso-14042-2001>



EUROPEAN COMMITTEE FOR STANDARDIZATION  
COMITÉ EUROPÉEN DE NORMALISATION  
EUROPÄISCHES KOMITEE FÜR NORMUNG

Central Secretariat: rue de Stassart, 36 B-1050 Brussels

## Foreword

The text of the International Standard ISO 14042:2000 has been prepared by Technical Committee ISO/TC 207 "Environmental management" in collaboration with CEN/CMC.

This European Standard shall be given the status of a national standard, either by publication of an identical text or by endorsement, at the latest by September 2000, and conflicting national standards shall be withdrawn at the latest by September 2000.

According to the CEN/CENELEC Internal Regulations, the national standards organizations of the following countries are bound to implement this European Standard: Austria, Belgium, Czech Republic, Denmark, Finland, France, Germany, Greece, Iceland, Ireland, Italy, Luxembourg, Netherlands, Norway, Portugal, Spain, Sweden, Switzerland and the United Kingdom.

## Endorsement notice

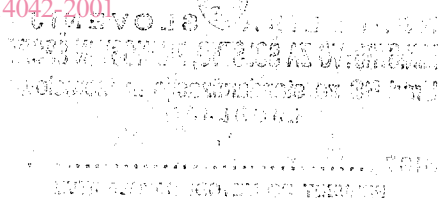
The text of the International Standard ISO 14042:2000 was approved by CEN as a European Standard without any modification.

NOTE: Normative references to International Standards are listed in annex ZA (normative).

# iTeh STANDARD PREVIEW (standards.iteh.ai)

[SIST EN ISO 14042:2001](https://standards.iteh.ai/catalog/standards/sist/9c5a1200-444c-45ab-8fd-b8e58f2830cc/sist-en-iso-14042-2001)

<https://standards.iteh.ai/catalog/standards/sist/9c5a1200-444c-45ab-8fd-b8e58f2830cc/sist-en-iso-14042-2001>



**Annex ZA (normative)**  
**Normative references to international publications**  
**with their relevant European publications**

This European Standard incorporates by dated or undated reference, provisions from other publications. These normative references are cited at the appropriate places in the text and the publications are listed hereafter. For dated references, subsequent amendments to or revisions of any of these publications apply to this European Standard only when incorporated in it by amendment or revision. For undated references the latest edition of the publication referred to applies.

<u>Publication</u>	<u>Year</u>	<u>Title</u>	<u>EN</u>	<u>Year</u>
ISO 14001	1996	Environmental management systems – Specification with guidance for use	EN ISO 14001	1996
ISO 14040	1997	Environmental management – Life cycle assessment – Principles and framework	EN ISO 14040	1997
ISO 14041	1998	Environmental management – Life cycle assessment – Goal and scope definition and inventory analysis	EN ISO 14041	1998

**iTeh STANDARD PREVIEW**  
**(standards.iteh.ai)**

SIST EN ISO 14042:2001

<https://standards.iteh.ai/catalog/standards/sist/9c5a1200-444c-45ab-8f1d-b8e58f2830cc/sist-en-iso-14042-2001>

**iTeh STANDARD PREVIEW**  
**(standards.iteh.ai)**

[SIST EN ISO 14042:2001](#)

<https://standards.iteh.ai/catalog/standards/sist/9c5a1200-444c-45ab-8f1d-b8e58f2830cc/sist-en-iso-14042-2001>

# INTERNATIONAL STANDARD

**ISO**  
**14042**

First edition  
2000-03-01

---

---

## **Environmental management — Life cycle assessment — Life cycle impact assessment**

*Management environnemental — Analyse du cycle de vie — Évaluation de  
l'impact du cycle de vie*

**iTeh STANDARD PREVIEW**  
**(standards.iteh.ai)**

[SIST EN ISO 14042:2001](https://standards.iteh.ai/catalog/standards/sist/9c5a1200-444c-45ab-8fd-b8e58f2830cc/sist-en-iso-14042-2001)

[https://standards.iteh.ai/catalog/standards/sist/9c5a1200-444c-45ab-8fd-  
b8e58f2830cc/sist-en-iso-14042-2001](https://standards.iteh.ai/catalog/standards/sist/9c5a1200-444c-45ab-8fd-b8e58f2830cc/sist-en-iso-14042-2001)



Reference number  
ISO 14042:2000(E)

© ISO 2000

**ISO 14042:2000(E)****PDF disclaimer**

This PDF file may contain embedded typefaces. In accordance with Adobe's licensing policy, this file may be printed or viewed but shall not be edited unless the typefaces which are embedded are licensed to and installed on the computer performing the editing. In downloading this file, parties accept therein the responsibility of not infringing Adobe's licensing policy. The ISO Central Secretariat accepts no liability in this area.

Adobe is a trademark of Adobe Systems Incorporated.

Details of the software products used to create this PDF file can be found in the General Info relative to the file; the PDF-creation parameters were optimized for printing. Every care has been taken to ensure that the file is suitable for use by ISO member bodies. In the unlikely event that a problem relating to it is found, please inform the Central Secretariat at the address given below.

## iTeh STANDARD PREVIEW (standards.iteh.ai)

[SIST EN ISO 14042:2001](#)

<https://standards.iteh.ai/catalog/standards/sist/9c5a1200-444c-45ab-8f1d-b8e58f2830cc/sist-en-iso-14042-2001>

© ISO 2000

All rights reserved. Unless otherwise specified, no part of this publication may be reproduced or utilized in any form or by any means, electronic or mechanical, including photocopying and microfilm, without permission in writing from either ISO at the address below or ISO's member body in the country of the requester.

ISO copyright office  
Case postale 56 • CH-1211 Geneva 20  
Tel. + 41 22 749 01 11  
Fax + 41 22 734 10 79  
E-mail [copyright@iso.ch](mailto:copyright@iso.ch)  
Web [www.iso.ch](http://www.iso.ch)

Printed in Switzerland



## Contents

Page

Foreword.....	iv
Introduction.....	v
1 Scope .....	1
2 Normative references .....	1
3 Terms and definitions .....	1
4 General description of LCIA .....	2
5 Mandatory elements .....	4
6 Optional elements.....	8
7 Data quality analysis .....	10
8 Limitations of LCIA.....	10
9 Comparative assertions disclosed to the public.....	11
10 Reporting and critical review.....	11
Annex A (normative) Relationship of life cycle impact assessment to the LCA framework.....	14
Bibliography .....	16

SIST EN ISO 14042:2001

<https://standards.iteh.ai/catalog/standards/sist/9c5a1200-444c-45ab-8fd-b8e58f2830cc/sist-en-iso-14042-2001>

**ISO 14042:2000(E)****Foreword**

ISO (the International Organization for Standardization) is a worldwide federation of national standards bodies (ISO member bodies). The work of preparing International Standards is normally carried out through ISO technical committees. Each member body interested in a subject for which a technical committee has been established has the right to be represented on that committee. International organizations, governmental and non-governmental, in liaison with ISO, also take part in the work. ISO collaborates closely with the International Electrotechnical Commission (IEC) on all matters of electrotechnical standardization.

International Standards are drafted in accordance with the rules given in the ISO/IEC Directives, Part 3.

Draft International Standards adopted by the technical committees are circulated to the member bodies for voting. Publication as an International Standard requires approval by at least 75 % of the member bodies casting a vote.

Attention is drawn to the possibility that some of the elements of this International Standard may be the subject of patent rights. ISO shall not be held responsible for identifying any or all such patent rights.

International Standard ISO 14042 was prepared by Technical Committee ISO/TC 207, *Environmental management*, Subcommittee SC 5, *Life cycle assessment*.

Annex A forms a normative part of this International Standard.

**ITIH STANDARD PREVIEW**  
**(standards.iteh.ai)**

[SIST EN ISO 14042:2001](https://standards.iteh.ai/catalog/standards/sist/9c5a1200-444c-45ab-8f1d-b8e58f2830cc/sist-en-iso-14042-2001)

<https://standards.iteh.ai/catalog/standards/sist/9c5a1200-444c-45ab-8f1d-b8e58f2830cc/sist-en-iso-14042-2001>

## Introduction

Life cycle impact assessment, LCIA, is the third phase of life cycle assessment described in ISO 14040. The purpose of LCIA is to assess a product system's<sup>1)</sup> life cycle inventory analysis (LCI) results to better understand their environmental significance. The LCIA phase models selected environmental issues, called impact categories, and uses category indicators<sup>2)</sup> to condense and explain the LCI results. Category indicators are intended to reflect the aggregate emissions or resource use for each impact category. These category indicators represent the "potential environmental impacts"<sup>3)</sup> discussed in ISO 14040. In addition, LCIA prepares for the life cycle interpretation phase.

LCIA as part of an overall LCA can, for example, be used to

- identify product system improvement opportunities and assist the prioritization of them,
- characterize or benchmark a product system and its unit processes over time,
- make relative comparisons among product systems based on selected category indicators, or
- indicate environmental issues for which other techniques can provide complementary environmental data and information useful to decision-makers.

While LCIA can assist in these applications, parties should recognize that an extensive assessment of a product system is difficult and may require the use of several different environmental assessment techniques.

[SIST EN ISO 14042:2001](https://standards.iteh.ai/catalog/standards/sist/9c5a1200-444c-45ab-8f1d-b8e58f2830cc/sist-en-iso-14042-2001)

<https://standards.iteh.ai/catalog/standards/sist/9c5a1200-444c-45ab-8f1d-b8e58f2830cc/sist-en-iso-14042-2001>

---

<sup>1)</sup> In this International Standard, the term "product system" also includes service systems.

<sup>2)</sup> The full expression for this term is "life cycle impact category indicator".

<sup>3)</sup> The "potential environmental impacts" referred to in ISO 14040 are a subset of the "environmental impacts" referred to in ISO 14001 resulting from the use of the functional unit calculation. The "potential environmental impacts" are relative expressions, as they are related to the functional unit of a product system.