

TECHNICAL REPORT

ISO
TR 11447

First edition
1994-11-01

Small craft — Interchangeability dimensions of navigation lights

iTeh STANDARD PREVIEW
(standards.iteh.ai)

*Navires de plaisance — Dimensions d'interchangeabilité des feux de
navigation*

[ISO/TR 11447:1994](https://standards.iteh.ai/catalog/standards/sist/9804ee73-0023-40ba-a9de-f8b96ce3693f/iso-tr-11447-1994)

[https://standards.iteh.ai/catalog/standards/sist/9804ee73-0023-40ba-a9de-
f8b96ce3693f/iso-tr-11447-1994](https://standards.iteh.ai/catalog/standards/sist/9804ee73-0023-40ba-a9de-f8b96ce3693f/iso-tr-11447-1994)



Reference number
ISO/TR 11447:1994(E)

Foreword

ISO (the International Organization for Standardization) is a worldwide federation of national standards bodies (ISO member bodies). The work of preparing International Standards is normally carried out through ISO technical committees. Each member body interested in a subject for which a technical committee has been established has the right to be represented on that committee. International organizations, governmental and non-governmental, in liaison with ISO, also take part in the work. ISO collaborates closely with the International Electrotechnical Commission (IEC) on all matters of electrotechnical standardization.

The main task of technical committees is to prepare International Standards, but in exceptional circumstances a technical committee may propose the publication of a Technical Report of one of the following types:

- type 1, when the required support cannot be obtained for the publication of an International Standard, despite repeated efforts;
- type 2, when the subject is still under technical development or where for any other reason there is the future but not immediate possibility of an agreement on an International Standard;
- type 3, when a technical committee has collected data of a different kind from that which is normally published as an International Standard ("state of the art", for example).

Technical Reports of types 1 and 2 are subject to review within three years of publication, to decide whether they can be transformed into International Standards. Technical Reports of type 3 do not necessarily have to be reviewed until the data they provide are considered to be no longer valid or useful.

ISO/TR 11447, which is a Technical Report of type 2, was prepared by Technical Committee ISO/TC 188, *Small craft*.

This document is being issued in the type 2 Technical Report series of publications (according to subclause G.4.2.2 of part 1 of the ISO/IEC Directives, 1992) as a "prospective standard for provisional application" in the field of navigation lights because there is an urgent need for guidance on how standards in this field should be used to meet an identified need.

This document is not to be regarded as an "International Standard". It is proposed for provisional application so that information and experience of

© ISO 1994

All rights reserved. Unless otherwise specified, no part of this publication may be reproduced or utilized in any form or by any means, electronic or mechanical, including photocopying and microfilm, without permission in writing from the publisher.

International Organization for Standardization

Case Postale 56 • CH-1211 Genève 20 • Switzerland

Printed in Switzerland

its use in practice may be gathered. Comments on the content of this document should be sent to the ISO Central Secretariat.

A review of this type 2 Technical Report will be carried out not later than two years after its publication with the options of: extension for another two years; conversion into an International Standard; or withdrawal.

iTeh STANDARD PREVIEW **(standards.iteh.ai)**

[ISO/TR 11447:1994](https://standards.iteh.ai/catalog/standards/sist/9804ee73-0023-40ba-a9de-f8b96ce3693f/iso-tr-11447-1994)

<https://standards.iteh.ai/catalog/standards/sist/9804ee73-0023-40ba-a9de-f8b96ce3693f/iso-tr-11447-1994>

Introduction

The submissions received by ISO/TC 188, WG 19, *Navigation lights* (national standards and production drawings) revealed the difficulty of achieving a quick solution to this matter of interchangeability dimensions of navigation lights for small craft. Furthermore, a new work item, dealing with the characteristics of navigation lights, was added to the work programme of ISO/TC 188. Being more general, this last item may also involve the dimensions of lights, either directly or by particular specifications for acceptable materials: therefore it was decided to stop the work and propose drawing up a Technical Report of type 2, allowing the Member Bodies interested to refer to it, thereby eventually facilitating harmonization and avoiding the proliferation of new options.

iTeh STANDARD PREVIEW (standards.iteh.ai)

[ISO/TR 11447:1994](https://standards.iteh.ai/catalog/standards/sist/9804ee73-0023-40ba-a9de-f8b96ce3693f/iso-tr-11447-1994)

<https://standards.iteh.ai/catalog/standards/sist/9804ee73-0023-40ba-a9de-f8b96ce3693f/iso-tr-11447-1994>

Small craft — Interchangeability dimensions of navigation lights

iTeh STANDARD PREVIEW
(standards.iteh.ai)

1 Scope

[ISO/TR 11447:1994](https://standards.iteh.ai/catalog/standards/sist/9804ee73-0023-40ba-a9de-18b96ce36937/iso-tr-11447-1994)

This Technical Report defines the parameters and threads of the attachment holes as well as the shape and relevant necessary dimensions of the connection points, etc. for navigation lights for small craft in order to ensure their interchangeability.

This Technical Report does not cover lights designed as an integral part of the craft.

NOTE 1 The different classes of small craft are in accordance with the IMO *Convention on the International Regulations for Preventing Collisions at Sea, 1972 (COLREG 1972)*.

2 Vessels of less than 12 m length

2.1 Masthead lights (all round lights)

See figure 1.

Dimensions in millimetres

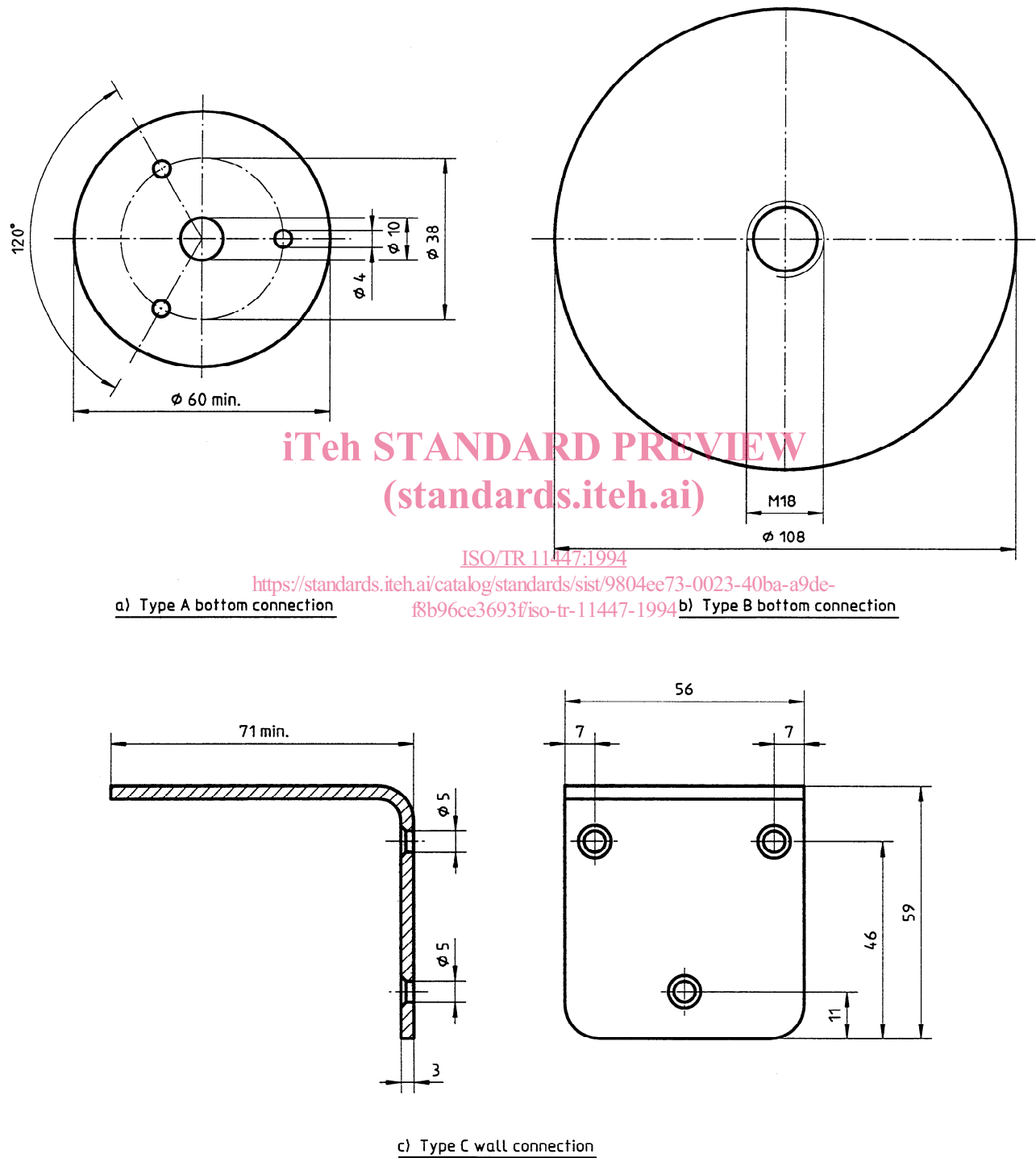


Figure 1 — Vessels of less than 12 m length: masthead lights

2.2 All lights other than masthead

Positions and diameters of fixing holes are given in figure 2.

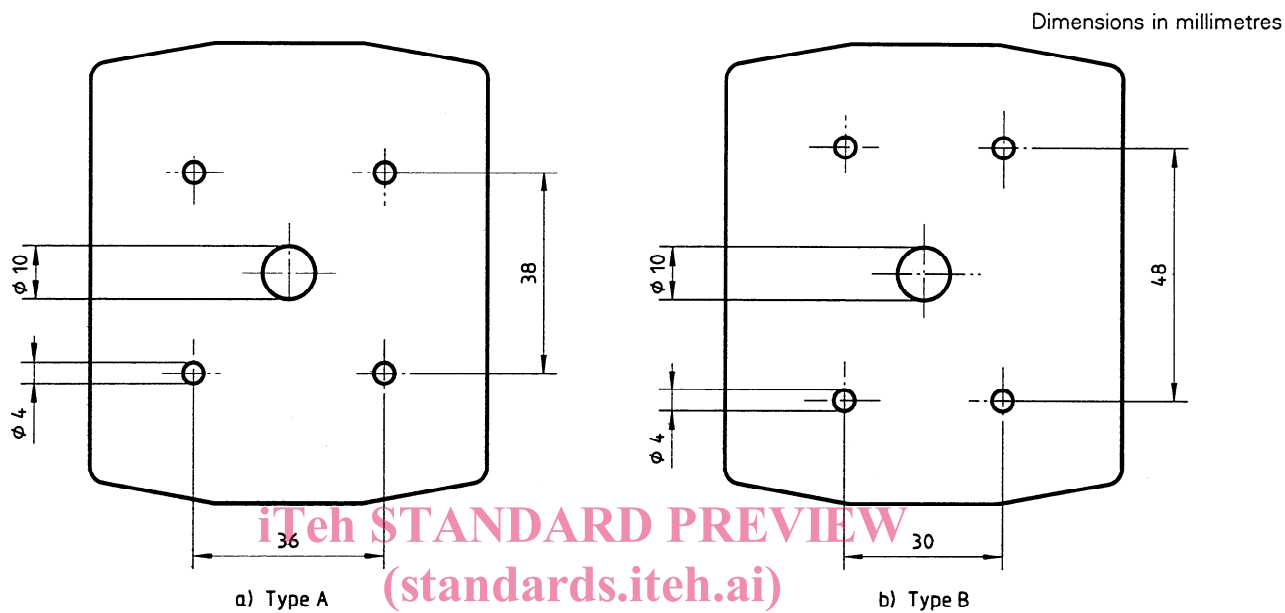


Figure 2 — Vessels of less than 12 m length: all lights other than masthead lights
<https://standards.iteh.ai/catalog/standards/sist/9804ee73-0023-40ba-a9de-f8b96ce3693f/iso-tr-11447-1994>

3 Vessels between 12 m and 20 m length: masthead lights

See figure 3.

Dimensions in millimetres

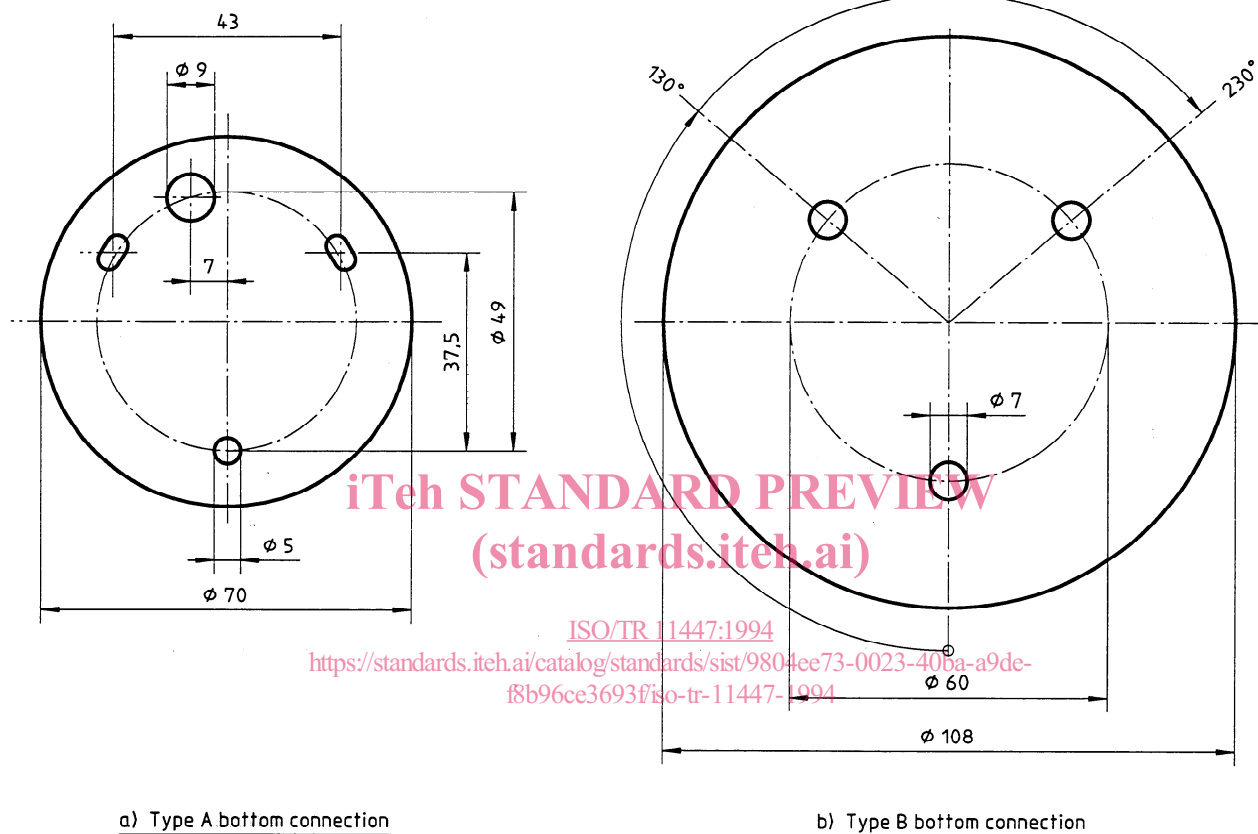


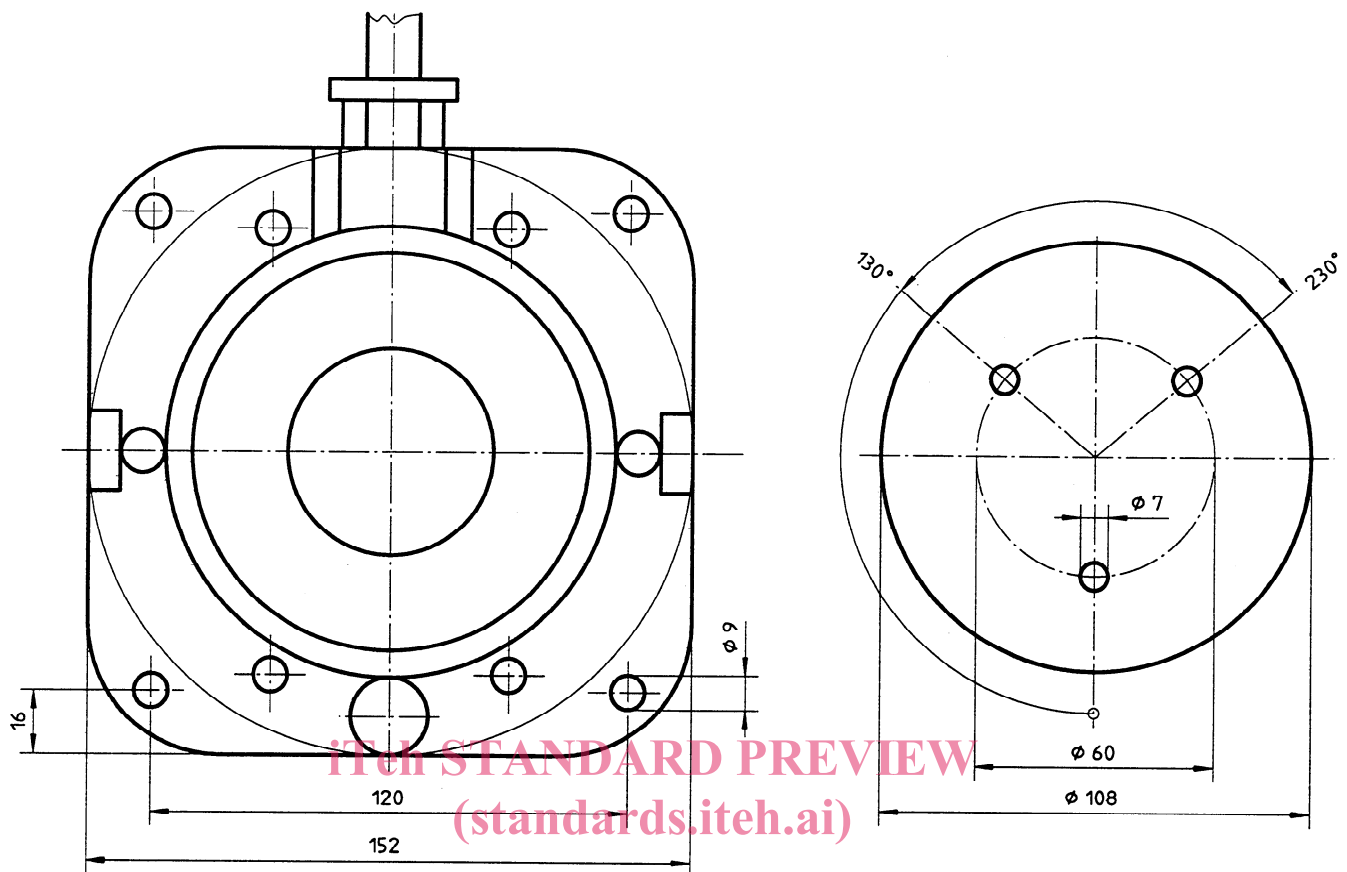
Figure 3 — Vessels between 12 m and 20 m length: masthead lights

4 Vessels between 20 m and 50 m length

4.1 All lights

See figure 4.

Dimensions in millimetres

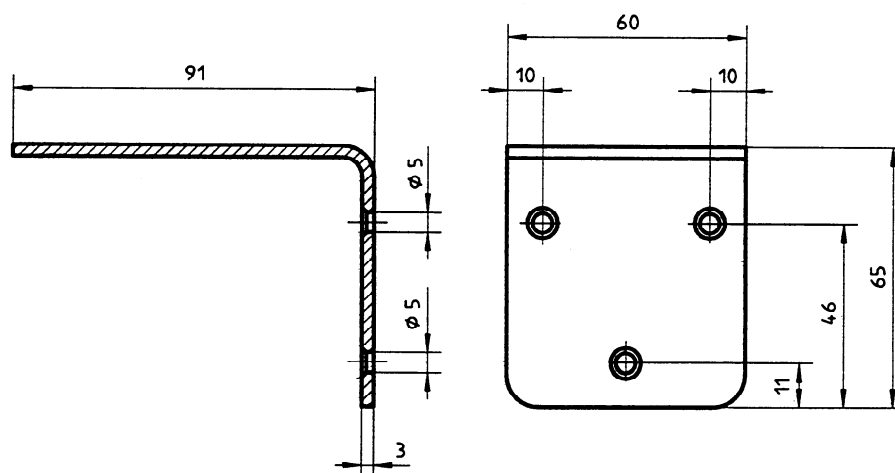


ISO/TR 11447:1994

<https://standards.iteh.ai/catalog/standards/sist/9804ee73-0023-40ba-a9de-96ce3693f/iso-tr-11447-1994>

a) Type A bottom connection

b) Type B bottom connection



c) Type C wall connection

Figure 4 — Vessels between 20 m and 50 m length: all lights