
Grooved pins with countersunk head

Clous cannelés à tête fraisée

iTeh STANDARD PREVIEW
(standards.iteh.ai)

ISO 8747:1997

<https://standards.iteh.ai/catalog/standards/sist/113a7002-36c1-426b-b2b7-8eab62215d9e/iso-8747-1997>



Foreword

ISO (the International Organization for Standardization) is a worldwide federation of national standards bodies (ISO member bodies). The work of preparing International Standards is normally carried out through ISO technical committees. Each member body interested in a subject for which a technical committee has been established has the right to be represented on that committee. International organizations, governmental and non-governmental, in liaison with ISO, also take part in the work. ISO collaborates closely with the International Electrotechnical Commission (IEC) on all matters of electrotechnical standardization.

Draft International Standards adopted by the technical committees are circulated to the member bodies for voting. Publication as an International Standard requires approval by at least 75 % of the member bodies casting a vote.

International Standard ISO 8747 was prepared by Technical Committee ISO/TC 2, *Fasteners*.

This second edition cancels and replaces the first edition (ISO 8747:1986), which has been technically revised.

iTeh STANDARD PREVIEW
(standards.iteh.ai)
ISO 8747:1997
<https://standards.iteh.ai/catalog/standards/sist/113a7002-36c1-426b-b2b7-8eab62215d9e/iso-8747-1997>

© ISO 1997

All rights reserved. Unless otherwise specified, no part of this publication may be reproduced or utilized in any form or by any means, electronic or mechanical, including photocopying and microfilm, without permission in writing from the publisher.

International Organization for Standardization
Case postale 56 • CH-1211 Genève 20 • Switzerland
Internet central@iso.ch
X.400 c=ch; a=400net; p=iso; o=isocs; s=central

Printed in Switzerland

Grooved pins with countersunk head

1 Scope

This International Standard specifies the characteristics of countersunk head grooved pins which have three equally spaced grooves impressed longitudinally on their exterior surface, with nominal diameter, d_1 , from 1,4 mm to 20 mm inclusive.

The displaced material to each side of the grooves forming an expanded diameter, d_2 , which is larger than the nominal diameter, d_1 , will cause a non-positive locking fit when these grooved pins are forced into a drilled hole equal to the nominal diameter d_1 (see clause 4).

iTeh STANDARD PREVIEW (standards.iteh.ai)

2 Normative references

The following standards contain provisions which, through reference in this text, constitute provisions of this International Standard. At the time of publication, the editions indicated were valid. All standards are subject to revision, and parties to agreements based on this International Standard are encouraged to investigate the possibility of applying the most recent editions of the standards indicated below. Members of IEC and ISO maintain registers of currently valid International Standards.

ISO 3269:1988, *Fasteners – Acceptance inspection*.

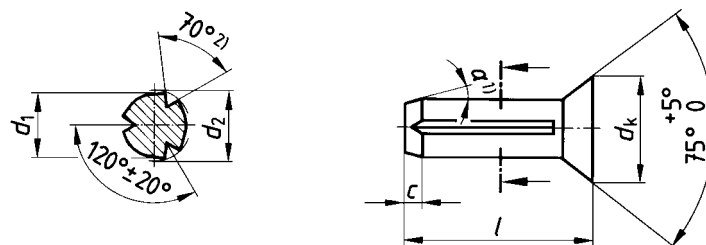
ISO 4042:—¹⁾, *Fasteners – Electroplated coatings*.

ISO 9717:1990, *Phosphate conversion coatings for metals – Method of specifying requirements*.

3 Dimensions

See figure 1 and table 1.

NOTE — Types A and B are left to the discretion of the supplier, or specifically ordered by the customer.



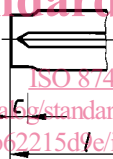
1) $\alpha = 15^\circ$ to 30°

2) The grooving angle 70° applies only to grooved pins made from steel as shown in clause 5. The grooving angle may be modified depending on resilience of material.

Type A: Pin with chamfered end

iTeh STANDARD PREVIEW
(standards.iteh.ai)

ISO 8747:1997
<https://standards.iteh.ai/catalog/standards/sist/113a7002-36c1-426b-b2b7-8eab62215d7e/iso-8747-1997>



NOTE — For other dimensions, see type A.

Type B: Pin with pilot end

Figure 1

Table 1 — Dimensions

Dimensions in millimetres

d_1	nom.	1,4	1,6	2	2,5	3	4	5	6	8	10	12	16	20
	max.	1,40	1,60	2,00	2,500	3,000	4,0	5,0	6,0	8,00	10,00	12,0	16,0	20,0
	min.	1,35	1,55	1,95	2,425	2,925	3,9	4,9	5,9	7,85	9,85	11,8	15,8	19,8
d_k	max.	2,7	3,0	3,7	4,6	5,45	7,25	9,1	10,8	14,4	16,0	19,0	26,0	31,5
	min.	2,3	2,6	3,3	4,2	4,95	6,75	8,5	10,2	13,6	14,9	17,7	23,7	30,7
c		0,42	0,48	0,6	0,75	0,9	1,2	1,5	1,8	2,4	3,0	3,6	4,8	6
$l^{1)}$		Expanded diameter, $d_2^{2), 3)}$												
nom.	min.	max.	+0,05 0			±0,05						±0,1		
3	2,8	3,2												
4	3,7	4,3	1,5											
5	4,7	5,3		1,7										
6	5,7	6,3			2,15	2,7								
8	7,7	8,3					3,2							
10	9,7	10,3						4,25						
12	11,6	12,4							5,25					
16	15,6	16,4								6,3				
20	19,5	20,5									8,3			
25	24,5	25,5										10,35	12,35	
30	29,5	30,5												16,4
35	34,5	35,5												20,5
40	39,5	40,5												

1) The range of commercial lengths is between the stepped lines.

2) The expanded diameter d_2 applies only to pins made from cold-heading steel. For other materials, for example stainless steel, a reduction amount shall be subtracted from the given values and should be agreed between customer and supplier.

3) For testing d_2 , a GO/NO GO ring gauge should be used.

4 Application

The diameter of the hole into which the grooved pin is to be inserted shall be equal to the nominal diameter d_1 of the mating pin and to tolerance class H11.

5 Requirements and reference International Standards

See table 2.

Table 2 — Requirements and reference International Standards

Material	Cold-heading steel (St), hardness 125 HV30 to 245 HV30. Other materials as agreed between customer and supplier.
Grooves	Shape of groove at the discretion of the supplier.
Surface finish	Plain, i.e. pins to be supplied in natural finish treated with a protective lubricant, unless otherwise specified by agreement between customer and supplier. Preferred coatings are black oxide, phosphate coating or zinc plating with chromate conversion coating (see ISO 9717 and ISO 4042). Other coatings as agreed between customer and supplier. All tolerances shall apply prior to the application of a plating or coating.
Workmanship	Pins shall be free of irregularities or detrimental defects.
Acceptability	The acceptance procedure is covered in ISO 3269.

STANDARD PREVIEW
(standards.iteh.ai)

6 Designation

ISO 8747:1997

<https://standards.iteh.ai/catalog/standards/sist/113a7002-36c1-426b-b2b7-8eab62215d9e/iso-8747-1997>

EXAMPLE

A countersunk head grooved steel pin with nominal diameter $d_1 = 6$ mm and nominal length $l = 30$ mm is designated as follows:

Grooved pin ISO 8747 – 6 × 30 – St

If in special cases, one of the types, for example type A, specified in clause 3 is required this shall be given in the designation, as follows:

Grooved pin ISO 8747 – 6 × 30 – A – St

iTeh STANDARD PREVIEW **(standards.iteh.ai)**

ISO 8747:1997

<https://standards.iteh.ai/catalog/standards/sist/113a7002-36c1-426b-b2b7-8eab62215d9e/iso-8747-1997>

iTeh STANDARD PREVIEW (standards.iteh.ai)

ISO 8747:1997

<https://standards.iteh.ai/catalog/standards/sist/113a7002-36c1-426b-b2b7-8eab62215d9e/iso-8747-1997>

ICS 21.060.50

Descriptors: fasteners, steel products, pins (mechanics), grooved pins, specifications, characteristics, dimensions, designation.

Price based on 4 pages
