

INTERNATIONAL  
STANDARD

**ISO**  
**5627**

Second edition  
1995-03-15

---

---

**Paper and board — Determination  
of smoothness (Bekk method)**

**iTeh STANDARD PREVIEW**  
*Papier et carton — Détermination du lisse (Méthode Bekk)*  
**(standards.iteh.ai)**

[ISO 5627:1995](https://standards.iteh.ai/catalog/standards/sist/d057f709-03b1-418f-87ec-2f6e65920c8/iso-5627-1995)

<https://standards.iteh.ai/catalog/standards/sist/d057f709-03b1-418f-87ec-2f6e65920c8/iso-5627-1995>



Reference number  
ISO 5627:1995(E)

## Foreword

ISO (the International Organization for Standardization) is a worldwide federation of national standards bodies (ISO member bodies). The work of preparing International Standards is normally carried out through ISO technical committees. Each member body interested in a subject for which a technical committee has been established has the right to be represented on that committee. International organizations, governmental and non-governmental, in liaison with ISO, also take part in the work. ISO collaborates closely with the International Electrotechnical Commission (IEC) on all matters of electrotechnical standardization.

Draft International Standards adopted by the technical committees are circulated to the member bodies for voting. Publication as an International Standard requires approval by at least 75 % of the member bodies casting a vote.

International Standard ISO 5627 was prepared by Technical Committee ISO/TC 6, *Paper, board and pulps*, Subcommittee SC 2, *Test methods and quality specifications for paper and board*.

This second edition cancels and replaces the first edition (ISO 5627:1984), which has been technically revised.

Annex A forms an integral part of this International Standard.

## Introduction

In the present state of knowledge it is not possible to recommend a single method for measuring the smoothness or roughness of paper or board, and there is no exact correlation among the various methods used for determining these properties. Instruments of the air-flow type are designed to obtain a numerical value indicative of the smoothness or roughness of the paper or board; it is necessary to refer to the results of these tests in terms of the specific type of instrument used, such as Bendtsen roughness, Sheffield roughness, Bekk smoothness, etc.

Bekk smoothness is dependent on the shape, total volume and distribution of the hollow spaces between the surface of the test piece and a theoretically ideal plane under the specified conditions of contact. The greater the Bekk smoothness number, the smoother the sample.

The air permeability of the sample being tested can also affect the results.

iTeh STANDARD PREVIEW  
(standards.iteh.ai)

[ISO 5627:1995](https://standards.iteh.ai/catalog/standards/sist/d057f709-03b1-418f-87ec-2f6e65920c8/iso-5627-1995)

<https://standards.iteh.ai/catalog/standards/sist/d057f709-03b1-418f-87ec-2f6e65920c8/iso-5627-1995>

**iTeh STANDARD PREVIEW**  
This page intentionally left blank  
**(standards.iteh.ai)**

[ISO 5627:1995](#)

<https://standards.iteh.ai/catalog/standards/sist/d057f709-03b1-418f-87ec-2f6e65920c8/iso-5627-1995>

# Paper and board — Determination of smoothness (Bekk method)

## 1 Scope

This International Standard specifies a method of measuring the smoothness of paper and board, called the Bekk method.

The smoothness of a wide range of papers and boards may be measured by this method and it is especially recommended for smooth papers and boards. However, for very smooth samples, measurement times may be impractically long.

This method is not recommended for materials greater than 0,5 mm thick or very permeable papers and board, since the amount of air passing through the test piece can influence the result.

It is not recommended for newsprint and it is not suitable for rough papers and boards.

## 2 Normative references

The following standards contain provisions which, through reference in this text, constitute provisions of this International Standard. At the time of publication, the editions indicated were valid. All standards are subject to revision, and parties to agreements based on this International Standard are encouraged to investigate the possibility of applying the most recent editions of the standards indicated below. Members of IEC and ISO maintain registers of currently valid International Standards.

ISO 48:1994, *Rubber, vulcanized or thermoplastic — Determination of hardness (hardness between 10 IRHD and 100 IRHD)*.

ISO 186:1994, *Paper and board — Sampling to determine average quality*.

ISO 187:1990, *Paper, board and pulps — Standard atmosphere for conditioning and testing and procedure for monitoring the atmosphere and conditioning of samples*.

ISO 4662:1986, *Rubber — Determination of rebound resilience of vulcanizates*.

## 3 Definition

For the purposes of this International Standard, the following definition applies.

**3.1 Bekk smoothness:** Time in seconds which, under a defined pressure differential, is required to draw a definite quantity of air at atmospheric pressure between the surface of the test piece and a ring-shaped plane surface, under specified conditions of contact (see figure 1).

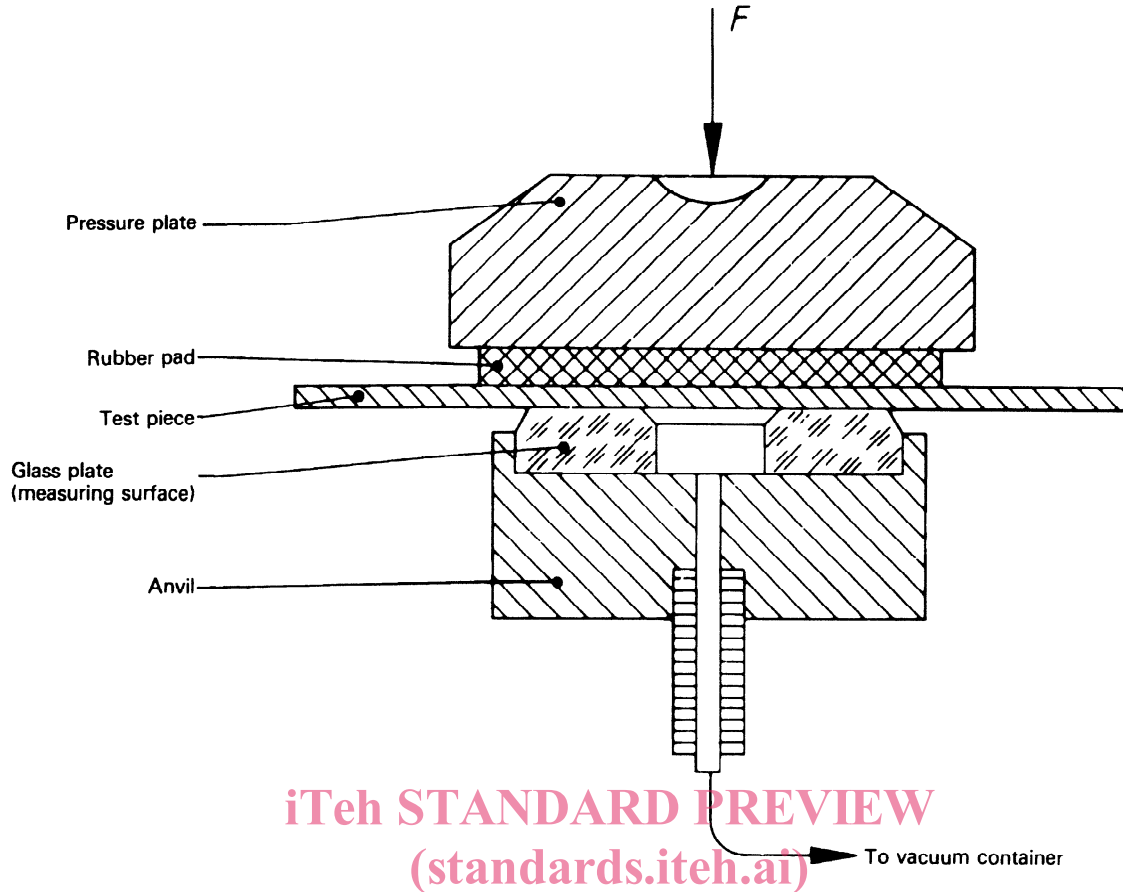
## 4 Principle

Subjection of a test piece of paper or board placed on a glass plate to a specified pressure and creation of a partial vacuum to draw atmospheric air across the contact surface. Measurement of the time required for a specified change in vacuum.

## 5 Apparatus

**5.1 Glass plate,** conforming to the design shown in figure 2.

The test surface shall be circular, plane and perfectly polished and have a contact area of  $10 \text{ cm}^2 \pm 0,05 \text{ cm}^2$ . The central hole in the glass plate shall be capable of being connected with a vacuum container and also of being disconnected.



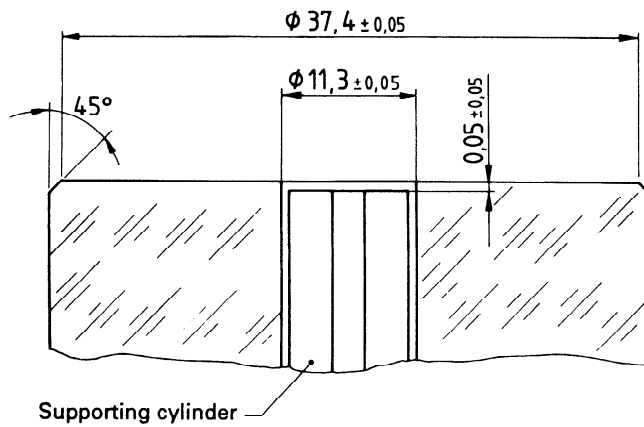
**iTeh STANDARD PREVIEW**  
**(standards.iteh.ai)**

**Figure 1 — Measuring principle**

ISO 5627:1995

<https://standards.iteh.ai/catalog/standards/sist/d057f709-03b1-418f-87ec-2f6fe65920c8/iso-5627-1995>

Dimensions in millimetres



NOTES

- 1 Some manufacturers do not provide a glass plate with a bevelled outer edge. In such cases a vertical glass cylinder of diameter 37,4 mm may be used.
- 2 Glass plates may be available with a bevelled inner edge. In such cases the angle of bevel is 45°.

**Figure 2 — Glass plate**

A supporting metal plug should be placed loosely in the hole with its upper surface in plane with the upper side of the glass plate to prevent the test piece from being pressed into the hole. If fitted, this plug shall have a central hole of diameter 1,5 mm to 2,0 mm. Its base shall have four radial channels through which the air can pass without obstruction.

NOTE 1 Some instruments have a glass plate without a plug. For most papers this does not significantly affect the results obtained, but the use of a plug is desirable.

The test surface shall be kept scrupulously clean and shall not be touched by hand. Before each measurement, any fibres and the like that may have adhered to the plate shall be removed. When not in use, the plate shall be protected by a cover. Scratches or cracks render it unusable.

**5.2 Device to clamp the test piece** against the glass plate with a pressure of 100 kPa  $\pm$  2 kPa<sup>1)</sup>.

**5.3 Pressure plate**, having a circular, even surface of not less than 45 mm diameter and which shall be connected to the device that presses the pressure plate against the glass plate at 100 kPa.

**5.4 Rubber pad**, placed between the pressure plate and the test piece.

When examined by incident light under a magnifying glass, the surface of the rubber pad shall be free from marks, scratches and tears and shall have the following dimensions:

- a) thickness: 4 mm  $\pm$  0,2 mm (measured with a ratchet screw micrometer having an anvil diameter of approximately 8 mm); the maximum thickness variation of one pad shall be  $\pm$  0,05 mm;
- b) surface: circular with a diameter of not less than 45 mm, or rectangular with sides not less than 50 mm in length.

Furthermore, the rubber pad shall have the following mechanical properties:

- a) hardness: 40 IRHD  $\pm$  5 IRHD (measured in accordance with ISO 48, method N);

- b) rebound resilience: at least 62 % (measured in accordance with ISO 4662).

**5.5 Vacuum containers**, capable of being evacuated to a vacuum greater than 50,7 kPa and capable of being hermetically sealed.

**5.5.1 Large vacuum container**, having a volume, including the connecting tube up to the surface of the glass plate (5.1), of 380 ml  $\pm$  1 ml.

**5.5.2 Small vacuum container**, having a volume, including the connecting tube up to the surface of the glass plate (5.1), of 38 ml  $\pm$  1 ml.

This container is not fitted to all instruments; in such cases means shall be provided to reduce the volume of the large vacuum container (5.5.1) to 190 ml or 95 ml.

**5.6 Manometer**, or other means of indicating a vacuum corresponding to 50,7 kPa, 48,0 kPa and 29,3 kPa to an accuracy of  $\pm$  0,07 kPa.

A drop in the vacuum from 50,7 kPa to 48,0 kPa means that 10 ml of the ambient air has entered the large container (5.5.1) or 1 ml has entered the small container (5.5.2). A drop in vacuum from 50,7 kPa to 29,3 kPa means that 80 ml of the ambient air has entered the large container or 8 ml has entered the small container.

**5.7 Timing device**, capable of being read to the nearest 1 s.

## 6 Sampling

Select specimens in accordance with ISO 186, making sure that there are no folds, creases, visible cracks or other defects in the area to be tested. The test pieces shall not include any part of the sample that is less than 15 mm from the edge of the sheet or reel. If watermarks are present, these areas should be avoided if possible.

Take at least 10 test pieces for each side to be tested, each larger in area than the pressure plate. To ensure careful handling of the test pieces, the size should not exceed A4 size. Differentiate the two faces of the test pieces.

1) 1 kPa = 10<sup>3</sup> N/m<sup>2</sup> = 1 kN/m<sup>2</sup> = 7,5 mmHg

## 7 Conditioning

Condition the test pieces in accordance with ISO 187. Carry out tests in the same atmosphere as that used for the conditioning.

## 8 Procedure

**8.1** Check the parts of the apparatus when necessary, as detailed in annex A, before proceeding to the determination of the smoothness of the test pieces.

**8.2** Place the apparatus on a level surface free from vibration. Remove the protective cover from the glass plate (5.1).

Measure the smoothness of the face to be tested using 10 test pieces. A separate test area shall be used for each measurement. That is to say, the smoothness of both faces may not be measured on the same test piece.

Place the test pieces with the face to be tested on the glass plate in such a way that the glass plate is fully covered. Place the rubber pad (5.4) and the pressure plate (5.3) on the test piece, apply a pressure of 100 kPa and produce a vacuum of more than 50,7 kPa in the large vacuum container (5.5.1).

Connect the vacuum container to the hole in the glass plate 60 s  $\pm$  5 s after application of the load.

Measure the time required, in seconds, for the vacuum in the large vacuum container to drop from 50,7 kPa to 48,0 kPa. If the time exceeds 300 s, then connect the smaller vacuum container (5.5.2) and repeat the test with a fresh test piece. If the time is less than 15 s, repeat the test with a fresh test piece and a vacuum drop from 50,7 kPa to 29,3 kPa.

If required, determine the smoothness of the other face of the samples with 10 further test pieces.

## 9 Expression of results

### 9.1 Calculation

From the individual readings, in seconds, calculate the arithmetic mean separately for each face.

If the measurements are made using the large vacuum container, then the mean values are the Bekk smoothness. If the measurements are made with the

smaller container, multiply the arithmetic means by 10 in order to obtain the Bekk smoothness.

When a vacuum drop of 50,7 kPa to 29,3 kPa has been used, divide the time by 10 to obtain the Bekk smoothness.

In addition, calculate the standard deviation or coefficient of variation of the Bekk smoothness for both faces.

### 9.2 Precision

Based on the results of numerous papers and laboratories obtained from the TAPPI Collaborative Reference Program for paper between 1971 and 1976, the precision of the method is as given in table 1.

The repeatability of the test is largely dependent on the variability of the sample.

## 10 Test report

The test report shall include the following information:

- a) reference to this International Standard;
- b) all information necessary for the complete identification of the sample;
- c) the standard atmosphere used for conditioning and testing;
- d) the result, to the nearest second, expressed as one mean value for each face tested; for example, smoothness (Bekk) 152 s; if the smaller vacuum container has been used, then this should be reported;
- e) the standard deviation or coefficient of variation and, if required, the 95 % confidence limits of the mean smoothness;
- f) whether tests were carried out on watermarked portions of the test pieces;
- g) whether or not a supporting plug was used;
- h) any unusual features observed in the course of the test;
- i) any operations not specified in this International Standard, or in the International Standards to which reference is made, or regarded as optional, which might have affected the results.



Table 1 — Precision data

Range of smoothness values of paper tested s	Repeatability (%)		Reproducibility (%)	
	range	average	range	average
4 to 1 400	5 to 21	11	21 to 56	37

**iTeh STANDARD PREVIEW**  
**(standards.iteh.ai)**

[ISO 5627:1995](https://standards.iteh.ai/catalog/standards/sist/d057f709-03b1-418f-87ec-2f6e65920c8/iso-5627-1995)

<https://standards.iteh.ai/catalog/standards/sist/d057f709-03b1-418f-87ec-2f6e65920c8/iso-5627-1995>