



SLOVENSKI STANDARD
SIST EN 144-3:2003
01-september-2003

CdfYa UnUj Ufcj UbYX\ U!JYbh]nUd`]bg_YY`Yb_Y!' "XY.:n cXb]df]`f]nU
dcHd`Uy_Ud`]bUB]fcl]b`]g]

Respiratory protective devices - Gas cylinder valves - Part 3: Outlet connections for diving gases Nitrox and oxygen

Atenschutzgeräte - Gasflaschenventile - Teil 3: Gewindeverbindungen am Ausgangsstutzen für die Tauchgase Nitrox und Sauerstoff

Appareils de protection respiratoire - Robinets de bouteille a gaz - Partie 3: Raccords de sortie pour gaz de plongée Nitrox et oxygene

<https://standards.iteh.ai/catalog/standards/sist/1289a995-3232-4bb1-ba7e-10e7a96c3037/sist-en-144-3-2003>

Ta slovenski standard je istoveten z: EN 144-3:2003

ICS:

13.340.30 Varovalne dihalne naprave Respiratory protective devices

SIST EN 144-3:2003

en

iTeh STANDARD PREVIEW
(standards.iteh.ai)

SIST EN 144-3:2003

<https://standards.iteh.ai/catalog/standards/sist/1289a995-3232-4bb1-ba7e-10e7a96c3037/sist-en-144-3-2003>

EUROPEAN STANDARD

EN 144-3

NORME EUROPÉENNE

EUROPÄISCHE NORM

February 2003

ICS 13.340.30

English version

Respiratory protective devices - Gas cylinder valves - Part 3: Outlet connections for diving gases Nitrox and oxygen

Appareils de protection respiratoire - Robinets de bouteille
à gaz - Partie 3: Raccords de sortie pour gaz de plongée
Nitrox et oxygène

Atemschutzgeräte - Gasflaschenventile - Teil 3:
Gewindeverbindungen am Ausgangsstutzen für die
Tauggase Nitrox und Sauerstoff

This European Standard was approved by CEN on 21 November 2002.

CEN members are bound to comply with the CEN/CENELEC Internal Regulations which stipulate the conditions for giving this European Standard the status of a national standard without any alteration. Up-to-date lists and bibliographical references concerning such national standards may be obtained on application to the Management Centre or to any CEN member.

This European Standard exists in three official versions (English, French, German). A version in any other language made by translation under the responsibility of a CEN member into its own language and notified to the Management Centre has the same status as the official versions.

CEN members are the national standards bodies of Austria, Belgium, Czech Republic, Denmark, Finland, France, Germany, Greece, Hungary, Iceland, Ireland, Italy, Luxembourg, Malta, Netherlands, Norway, Portugal, Slovak Republic, Spain, Sweden, Switzerland and United Kingdom.

[SIST EN 144-3:2003](https://standards.iteh.ai/catalog/standards/sist/1289a995-3232-4bb1-ba7e-10e7a96c3037/sist-en-144-3-2003)

<https://standards.iteh.ai/catalog/standards/sist/1289a995-3232-4bb1-ba7e-10e7a96c3037/sist-en-144-3-2003>



EUROPEAN COMMITTEE FOR STANDARDIZATION
COMITÉ EUROPÉEN DE NORMALISATION
EUROPÄISCHES KOMITEE FÜR NORMUNG

Management Centre: rue de Stassart, 36 B-1050 Brussels

Contents

	page
Foreword.....	3
Introduction	4
1 Scope	5
2 Normative references	5
3 Thread connection for valve outlet	6
3.1 Thread connection for pressures up to 250 bar (nominal pressure 200 bar).....	6
3.2 Thread connection for pressures between 250 bar and 350 bar (nominal pressure 300 bar).....	7
4 Marking	7
Annex ZA (informative) Clauses of this European Standard addressing essential requirements or other provisions of EU Directives.	8

iTeh STANDARD PREVIEW (standards.iteh.ai)

[SIST EN 144-3:2003](https://standards.iteh.ai/catalog/standards/sist/1289a995-3232-4bb1-ba7e-10e7a96c3037/sist-en-144-3-2003)

<https://standards.iteh.ai/catalog/standards/sist/1289a995-3232-4bb1-ba7e-10e7a96c3037/sist-en-144-3-2003>

Foreword

This document (EN 144-3:2003) has been prepared by Technical Committee CEN /TC 79 "Respiratory protective devices", the secretariat of which is held by DIN.

This European Standard shall be given the status of a national standard, either by publication of an identical text or by endorsement, at the latest by August 2003, and conflicting national standards shall be withdrawn at the latest by August 2003.

This European Standard has been prepared under a mandate given to CEN by the European Commission and the European Free Trade Association, and supports essential requirements of EU Directive(s).

For relationship with EU Directive(s), see informative annex ZA, which is an integral part of this standard.

According to the CEN/CENELEC Internal Regulations, the national standards organizations of the following countries are bound to implement this European Standard: Austria, Belgium, Czech Republic, Denmark, Finland, France, Germany, Greece, Hungary, Iceland, Ireland, Italy, Luxembourg, Malta, Netherlands, Norway, Portugal, Slovak Republic, Spain, Sweden, Switzerland and the United Kingdom.

iTeh STANDARD PREVIEW (standards.iteh.ai)

SIST EN 144-3:2003

<https://standards.iteh.ai/catalog/standards/sist/1289a995-3232-4bb1-ba7e-10e7a96c3037/sist-en-144-3-2003>

Introduction

In recognition of the very high number of valves using threads of existing national design and the high costs that would be caused by the unnecessary early replacement of these, it is acknowledged that a 5 year transitional period will be required to phase in valves using the thread described in this standard. During the ensuing period valves may be supplied with threads to the existing national design or to the standard described herein.

iTeh STANDARD PREVIEW (standards.iteh.ai)

[SIST EN 144-3:2003](https://standards.iteh.ai/catalog/standards/sist/1289a995-3232-4bb1-ba7e-10e7a96c3037/sist-en-144-3-2003)

<https://standards.iteh.ai/catalog/standards/sist/1289a995-3232-4bb1-ba7e-10e7a96c3037/sist-en-144-3-2003>

1 Scope

This European Standard is applicable to a thread connection used for the connection between a gas cylinder valve and a pressure reducer for respiratory equipment for diving containing breathable nitrox gas with an oxygen content greater than 22 % or oxygen. This European Standard specifies the dimensions and tolerances for connections which are used for respiratory equipment.

2 Normative references

This European Standard incorporates by dated or undated reference, provisions from other publications. These normative references are cited at the appropriate places in the text and, the publications are listed hereafter. For dated references, subsequent amendments to or revisions of any of these publications apply to this European Standard only when incorporated in it by amendment or revision. For undated references the latest edition of the publication referred to applies (including amendments).

EN 144-1, *Respiratory protective devices – Gas cylinder valves – Part 1: Thread connections for insert connector*

iTeh STANDARD PREVIEW (standards.iteh.ai)

[SIST EN 144-3:2003](https://standards.iteh.ai/catalog/standards/sist/1289a995-3232-4bb1-ba7e-10e7a96c3037/sist-en-144-3-2003)

<https://standards.iteh.ai/catalog/standards/sist/1289a995-3232-4bb1-ba7e-10e7a96c3037/sist-en-144-3-2003>

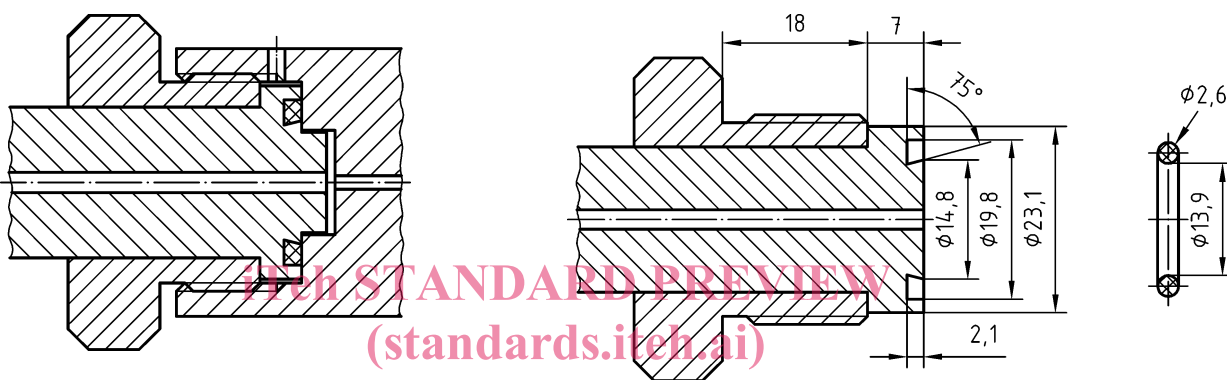
3 Thread connection for valve outlet

3.1 Thread connection for pressures up to 250 bar (nominal pressure 200 bar)

Figure 1 shows the thread connection and its dimensions to be used for cylinders with a maximum filling pressure of 250 bar.

Dimensions in millimetres

Tolerance: $\pm 0,1$ mm unless specified



SIST EN 144-3:2003

<https://standards.iteh.ai/catalog/standards/sist/1289a995-3232-4bb1-ba7e-107a96c3037/sist-en-144-3-2003>

Figure 1a) — Valve outlet connection Figure 1b) — Filling connector

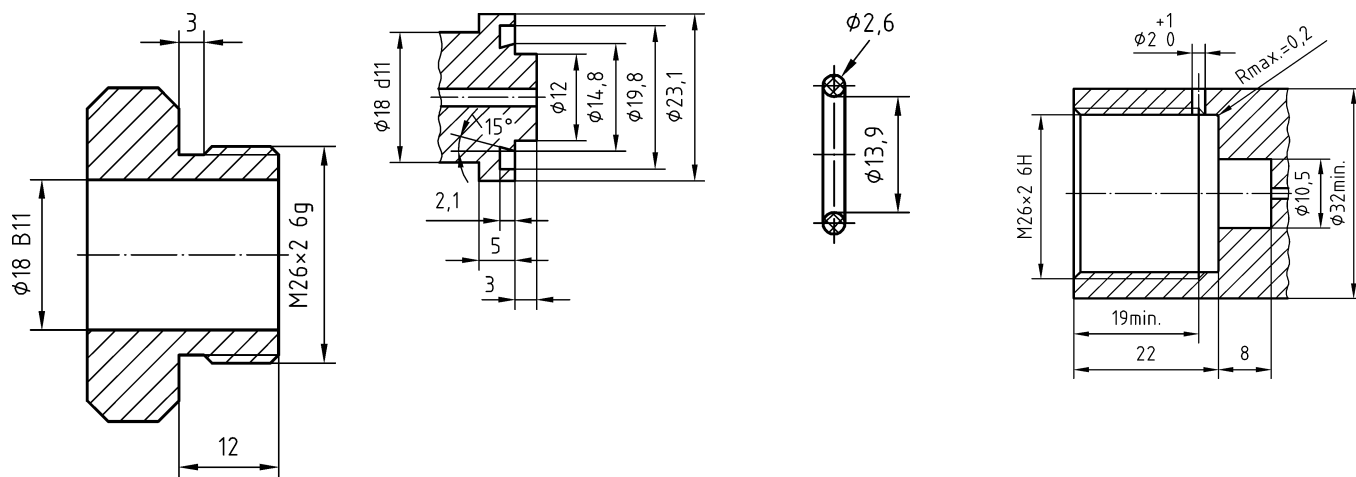


Figure 1c) — Handwheel Figure 1d) — Connector Figure 1e) — O-ring Figure 1f) — Valve outlet

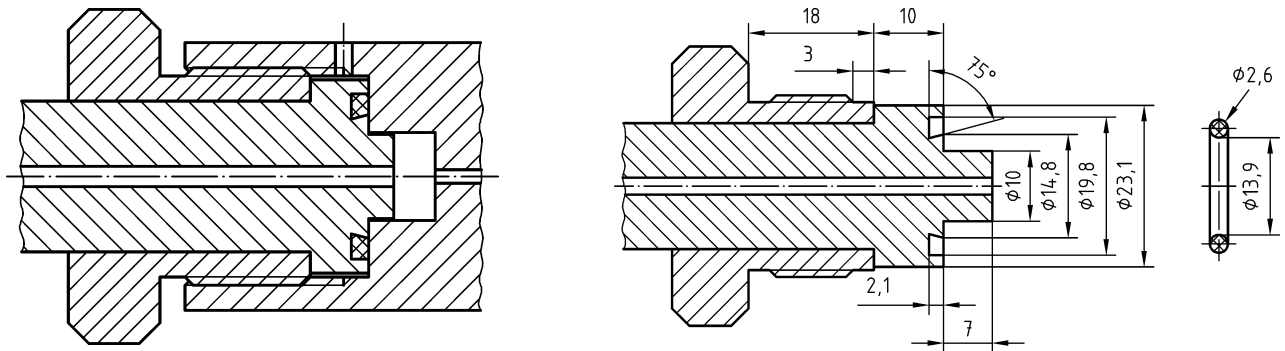
Figure 1 — Thread connection for pressures up to 250 bar

3.2 Thread connection for pressures between 250 bar and 350 bar (nominal pressure 300 bar)

Figure 2 shows the thread connection and its dimensions to be used for cylinders with a maximum filling pressure of 350 bar.

Dimensions in millimetres

Tolerance: $\pm 0,1$ mm unless specified



iTeh STANDARD PREVIEW

(standards.iteh.ai)

Figure 2a) — Valve outlet connection Figure 2b) — Filling connector

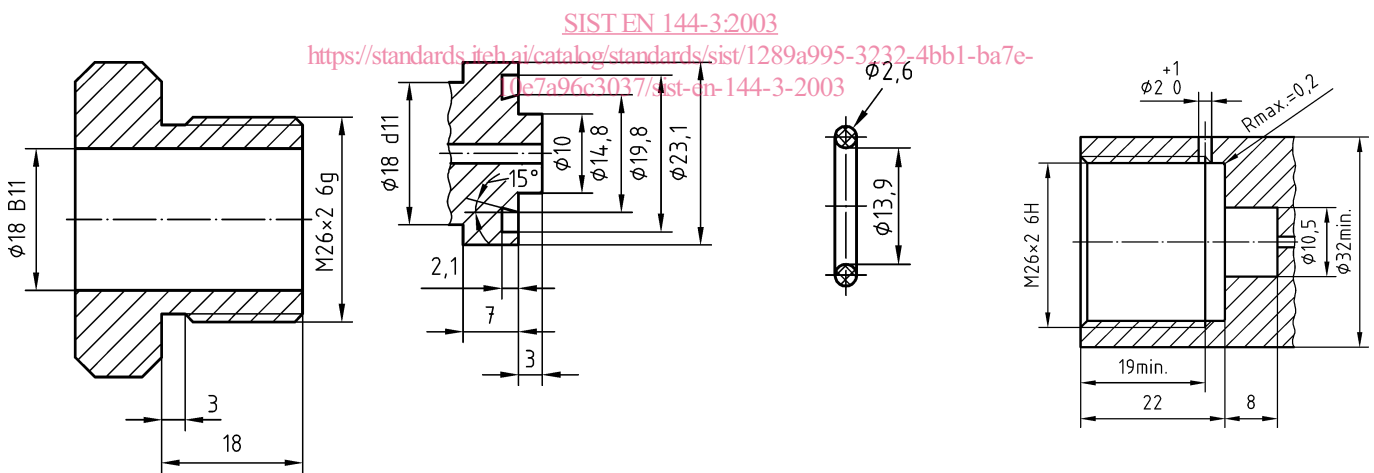


Figure 2c) — Handwheel Figure 2d) — Connector Figure 2e) — O-ring Figure 2f) — Valve outlet

Figure 2 — Thread connection for pressures between 250 bar and 350 bar

4 Marking

In addition to the marking required in EN 144-1 the valve outlet connection shall be permanently marked with "200" for nominal pressure 200 bar connections and with "300" for nominal pressure 300 bar connections.