

INTERNATIONAL STANDARD

NORME INTERNATIONALE



**Energy management system application program interface (EMS-API) –
Part 453: Diagram layout profile**

[standards.iteh.ai](https://standards.iteh.ai/catalog/standards/sist/544d4e47-c1cc-4812-b0d4-4cd3062a20e7/iec-61970-453-2014)

**Interface de programmation d'application pour système de gestion d'énergie
(EMS-API) –
Partie 453: Profil de disposition de diagramme**



THIS PUBLICATION IS COPYRIGHT PROTECTED
Copyright © 2014 IEC, Geneva, Switzerland

All rights reserved. Unless otherwise specified, no part of this publication may be reproduced or utilized in any form or by any means, electronic or mechanical, including photocopying and microfilm, without permission in writing from either IEC or IEC's member National Committee in the country of the requester. If you have any questions about IEC copyright or have an enquiry about obtaining additional rights to this publication, please contact the address below or your local IEC member National Committee for further information.

Droits de reproduction réservés. Sauf indication contraire, aucune partie de cette publication ne peut être reproduite ni utilisée sous quelque forme que ce soit et par aucun procédé, électronique ou mécanique, y compris la photocopie et les microfilms, sans l'accord écrit de l'IEC ou du Comité national de l'IEC du pays du demandeur. Si vous avez des questions sur le copyright de l'IEC ou si vous désirez obtenir des droits supplémentaires sur cette publication, utilisez les coordonnées ci-après ou contactez le Comité national de l'IEC de votre pays de résidence.

IEC Central Office
3, rue de Varembe
CH-1211 Geneva 20
Switzerland

Tel.: +41 22 919 02 11
Fax: +41 22 919 03 00
info@iec.ch
www.iec.ch

About the IEC

The International Electrotechnical Commission (IEC) is the leading global organization that prepares and publishes International Standards for all electrical, electronic and related technologies.

About IEC publications

The technical content of IEC publications is kept under constant review by the IEC. Please make sure that you have the latest edition, a corrigenda or an amendment might have been published.

IEC Catalogue - webstore.iec.ch/catalogue

The stand-alone application for consulting the entire bibliographical information on IEC International Standards, Technical Specifications, Technical Reports and other documents. Available for PC, Mac OS, Android Tablets and iPad.

IEC publications search - www.iec.ch/searchpub

The advanced search enables to find IEC publications by a variety of criteria (reference number, text, technical committee,...). It also gives information on projects, replaced and withdrawn publications.

IEC Just Published - webstore.iec.ch/justpublished

Stay up to date on all new IEC publications. Just Published details all new publications released. Available online and also once a month by email.

Electropedia - www.electropedia.org

The world's leading online dictionary of electronic and electrical terms containing more than 30 000 terms and definitions in English and French, with equivalent terms in 14 additional languages. Also known as the International Electrotechnical Vocabulary (IEV) online.

IEC Glossary - std.iec.ch/glossary

More than 55 000 electrotechnical terminology entries in English and French extracted from the Terms and Definitions clause of IEC publications issued since 2002. Some entries have been collected from earlier publications of IEC TC 37, 77, 86 and CISPR.

IEC Customer Service Centre - webstore.iec.ch/csc

If you wish to give us your feedback on this publication or need further assistance, please contact the Customer Service Centre: csc@iec.ch.

A propos de l'IEC

La Commission Electrotechnique Internationale (IEC) est la première organisation mondiale qui élabore et publie des Normes internationales pour tout ce qui a trait à l'électricité, à l'électronique et aux technologies apparentées.

A propos des publications IEC

Le contenu technique des publications IEC est constamment revu. Veuillez vous assurer que vous possédez l'édition la plus récente, un corrigendum ou amendement peut avoir été publié.

Catalogue IEC - webstore.iec.ch/catalogue

Application autonome pour consulter tous les renseignements bibliographiques sur les Normes internationales, Spécifications techniques, Rapports techniques et autres documents de l'IEC. Disponible pour PC, Mac OS, tablettes Android et iPad.

Recherche de publications IEC - www.iec.ch/searchpub

La recherche avancée permet de trouver des publications IEC en utilisant différents critères (numéro de référence, texte, comité d'études,...). Elle donne aussi des informations sur les projets et les publications remplacées ou retirées.

IEC Just Published - webstore.iec.ch/justpublished

Restez informé sur les nouvelles publications IEC. Just Published détaille les nouvelles publications parues. Disponible en ligne et aussi une fois par mois par email.

Electropedia - www.electropedia.org

Le premier dictionnaire en ligne de termes électroniques et électriques. Il contient plus de 30 000 termes et définitions en anglais et en français, ainsi que les termes équivalents dans 14 langues additionnelles. Egalement appelé Vocabulaire Electrotechnique International (IEV) en ligne.

Glossaire IEC - std.iec.ch/glossary

Plus de 55 000 entrées terminologiques électrotechniques, en anglais et en français, extraites des articles Termes et Définitions des publications IEC parues depuis 2002. Plus certaines entrées antérieures extraites des publications des CE 37, 77, 86 et CISPR de l'IEC.

Service Clients - webstore.iec.ch/csc

Si vous désirez nous donner des commentaires sur cette publication ou si vous avez des questions contactez-nous: csc@iec.ch.



IEC 61970-453

Edition 2.0 2014-02

INTERNATIONAL STANDARD

NORME INTERNATIONALE



**Energy management system application program interface (EMS-API) –
Part 453: Diagram layout profile**

**Interface de programmation d'application pour système de gestion d'énergie
(EMS-API) –
Partie 453: Profil de disposition de diagramme**

INTERNATIONAL
ELECTROTECHNICAL
COMMISSION

COMMISSION
ELECTROTECHNIQUE
INTERNATIONALE

PRICE CODE
CODE PRIX

U

ICS 33.200

ISBN 978-2-8322-1403-9

**Warning! Make sure that you obtained this publication from an authorized distributor.
Attention! Veuillez vous assurer que vous avez obtenu cette publication via un distributeur agréé.**

CONTENTS

FOREWORD.....	4
INTRODUCTION.....	6
1 Scope.....	7
2 Normative references	7
3 Terms and definitions	7
4 Use Cases.....	8
4.1 General use cases for diagram exchange	8
4.2 Simple bay diagram example	10
5 Diagram layout exchange profile.....	12
5.1 General.....	12
5.2 Diagram layout profile classes	13
5.2.1 General	13
5.2.2 Diagram.....	14
5.2.3 DiagramObject.....	14
5.2.4 DiagramObjectGluePoint	15
5.2.5 DiagramObjectPoint.....	15
5.2.6 DiagramObjectStyle.....	16
5.2.7 TextDiagramObject.....	16
5.2.8 VisibilityLayer	17
5.2.9 Abstract classes – IdentifiedObject.I.....	17
5.2.10 Enumerations – OrientationKind	18
6 Graphical rendering.....	18
6.1 General.....	18
6.2 Single point objects.....	18
6.3 Multiple point objects	19
6.4 Gluing points.....	20
6.5 Diagram object style	21
6.6 Diagram layout exchange process	21
7 Examples	23
7.1 Data instantiation and encoding.....	23
7.2 Simple bay example use case.....	25
Annex A (informative) Benefits and format conversion from IEC 61970-453 Edition 1 to Edition 2	27
Bibliography.....	28
Figure 1 – System overview.....	9
Figure 2 – Bay diagram as rendered	10
Figure 3 – Bay diagram drawn in GIS style	11
Figure 4 – Bay diagram drawn in SCADA style.....	12
Figure 5 – Diagram layout information model.....	13
Figure 6 – Conventions used for representing object instances and associations	18
Figure 7 – Single point diagram objects	19
Figure 8 – Multiple point diagram objects.....	20
Figure 9 – Disconnecter with glue point	20
Figure 10 – Disconnecter and breaker with glue points	21

Figure 11 – Profiles within IEC standards	22
Figure 12 – Disconnecter diagram object instantiation	23
Figure 13 – IEC 61970-552 Encoding for disconnecter diagram data	24
Figure 14 – Bay diagram example with objects outlined GIS style	25
Figure 15 – Bay diagram example with objects outlined SCADA/EMS style	26

iTeh STANDARD PREVIEW
(standards.iteh.ai)

[IEC 61970-453:2014](https://standards.iteh.ai/catalog/standards/sist/344d4e47-c1ec-4812-b5d4-4cd3062a20e7/iec-61970-453-2014)

<https://standards.iteh.ai/catalog/standards/sist/344d4e47-c1ec-4812-b5d4-4cd3062a20e7/iec-61970-453-2014>

INTERNATIONAL ELECTROTECHNICAL COMMISSION

**ENERGY MANAGEMENT SYSTEM APPLICATION
PROGRAM INTERFACE (EMS-API) –****Part 453: Diagram layout profile**

FOREWORD

- 1) The International Electrotechnical Commission (IEC) is a worldwide organization for standardization comprising all national electrotechnical committees (IEC National Committees). The object of IEC is to promote international co-operation on all questions concerning standardization in the electrical and electronic fields. To this end and in addition to other activities, IEC publishes International Standards, Technical Specifications, Technical Reports, Publicly Available Specifications (PAS) and Guides (hereafter referred to as “IEC Publication(s)”). Their preparation is entrusted to technical committees; any IEC National Committee interested in the subject dealt with may participate in this preparatory work. International, governmental and non-governmental organizations liaising with the IEC also participate in this preparation. IEC collaborates closely with the International Organization for Standardization (ISO) in accordance with conditions determined by agreement between the two organizations.
- 2) The formal decisions or agreements of IEC on technical matters express, as nearly as possible, an international consensus of opinion on the relevant subjects since each technical committee has representation from all interested IEC National Committees.
- 3) IEC Publications have the form of recommendations for international use and are accepted by IEC National Committees in that sense. While all reasonable efforts are made to ensure that the technical content of IEC Publications is accurate, IEC cannot be held responsible for the way in which they are used or for any misinterpretation by any end user.
- 4) In order to promote international uniformity, IEC National Committees undertake to apply IEC Publications transparently to the maximum extent possible in their national and regional publications. Any divergence between any IEC Publication and the corresponding national or regional publication shall be clearly indicated in the latter.
- 5) IEC itself does not provide any attestation of conformity. Independent certification bodies provide conformity assessment services and, in some areas, access to IEC marks of conformity. IEC is not responsible for any services carried out by independent certification bodies.
- 6) All users should ensure that they have the latest edition of this publication.
- 7) No liability shall attach to IEC or its directors, employees, servants or agents including individual experts and members of its technical committees and IEC National Committees for any personal injury, property damage or other damage of any nature whatsoever, whether direct or indirect, or for costs (including legal fees) and expenses arising out of the publication, use of, or reliance upon, this IEC Publication or any other IEC Publications.
- 8) Attention is drawn to the Normative references cited in this publication. Use of the referenced publications is indispensable for the correct application of this publication.
- 9) Attention is drawn to the possibility that some of the elements of this IEC Publication may be the subject of patent rights. IEC shall not be held responsible for identifying any or all such patent rights.

International Standard IEC 61970-453 has been prepared by IEC technical committee 57: Power systems management and associated information exchange.

This second edition cancels and replaces the first edition published in 2008. This edition constitutes a technical revision.

This edition includes the following significant technical changes with respect to the previous edition:

- a) The SVG elements and its data model have been replaced by the Diagram Layout Package, which is now an integral part of the IEC 61970-301 (CIM) model.
- b) The exchange is in accordance with and is a part of the IEC 61970 profile concept.
- c) A glue point object has been introduced to model explicit connections between graphics elements.

The text of this standard is based on the following documents:

FDIS	Report on voting
57/1409/FDIS	57/1430/RVD

Full information on the voting for the approval of this standard can be found in the report on voting indicated in the above table.

This publication has been drafted in accordance with the ISO/IEC Directives, Part 2.

A list of all parts in the IEC 61970 series, published under the general title *Energy management system application program interface (EMS-API)*, can be found on the IEC website.

The committee has decided that the contents of this publication will remain unchanged until the stability date indicated on the IEC web site under "<http://webstore.iec.ch>" in the data related to the specific publication. At this date, the publication will be

- reconfirmed,
- withdrawn,
- replaced by a revised edition, or
- amended.

iTeh STANDARD PREVIEW
(standards.iteh.ai)

IMPORTANT – The 'colour inside' logo on the cover page of this publication indicates that it contains colours which are considered to be useful for the correct understanding of its contents. Users should therefore print this document using a colour printer.

INTRODUCTION

This standard is part of the IEC 61970 series that define an application program interface (API¹) for an Energy Management System (EMS²).

The IEC 61970-3x series specify a Common Information Model (CIM³): a logical view of the physical aspects of EMS information. The IEC 61970-3x series includes IEC 61970-301, *Common Information Model (CIM) Base*.

This standard is one of the IEC 61970-4x series that define utility control centre component interface specifications (CIS⁴). IEC 61970-4x specifies the functional requirements for interfaces that a component (or application) shall implement to exchange information with other components (or applications) and/or to access publicly available data in a standard way. The component interfaces describe the specific message contents and services that can be used by applications for this purpose. The implementation of these messages in a particular technology is described in the IEC 61970-5x series.

Energy Management Systems employ a variety of schematic and quasi-geographic presentations in their user interfaces. These are sometimes generated automatically, but more often are hand-drawn and require considerable labour to create and maintain. Most of this labour goes into the arrangement, or 'layout' of the power system elements within the overall diagram. When network models are exchanged, as defined in IEC 61970-452 and IEC 61968-13 standards, it is desirable to be able to exchange these layouts.

IEC 61970-453 specifies guidelines for the exchange of diagram layout information for schematic data that is encoded using IEC 61970-552.

iTeh STANDARD PREVIEW
(standards.itih.ai)

<https://standards.itih.ai/catalog/standards/sist/344d4e47-c1ec-4812-b5d4-4cd3062a20e7/iec-61970-453-2014>

1 Footnote 1 applies to the French version only.

2 Footnote 2 applies to the French version only.

3 Footnote 3 applies to the French version only.

4 Footnote 4 applies to the French version only.

ENERGY MANAGEMENT SYSTEM APPLICATION PROGRAM INTERFACE (EMS-API) –

Part 453: Diagram layout profile

1 Scope

This part of IEC 61970 is a member of the IEC 61970-450 to 499 series that, taken as a whole, defines, at an abstract level, the content and exchange mechanisms used for data transmitted between control centre components.

Included in this part of IEC 61970 are the general use cases for exchange of diagram layout data, and guidelines for linking the layout definitions with CIM data. Guidelines for management of schematic definitions through multiple revisions are also included.

2 Normative references

The following documents, in whole or in part, are normatively referenced in this document and are indispensable for its application. For dated references, only the edition cited applies. For undated references, the latest edition of the referenced document (including any amendments) applies.

IEC 60050, *International electrotechnical vocabulary*

[IEC 61970-453:2014](#)

IEC 61970-301, *Energy management system application program interface (EMS-API) – Part 301: Common information model (CIM) base*

IEC 61970-501, *Energy management system application program interface (EMS-API) – Part 501: Common Information Model Resource Description Framework (CIM RDF) schema*

IEC/TR 62541-1, *OPC Unified Architecture – Part 1: Overview and concepts*

3 Terms and definitions

For the purposes of this document, the terms and definitions given in IEC 60050, as well as the following, apply.

3.1

domain object⁵

instance of a class that models a Real-World Object⁶ with a unique identity

Note 1 to entry: A domain object inherits from a CIM *IdentifiedObject*. A domain object is normally not a diagram object.

3.2

diagram⁷

electronic equivalent of a seamless paper plan

⁵ Footnote 5 applies only to the French version.

⁶ Footnote 6 applies only to the French version.

⁷ Footnote 7 applies to the French version only.

Note 1 to entry: The diagram is an identified container for the diagram objects. Examples of diagrams include substation schematics, transportation or distribution network orthogonal schematics, or pseudo-geographical schematics. A diagram has a well-defined coordinate space.

3.3 diagram object⁸ representation of domain objects or static background

Note 1 to entry: The diagram is composed of diagram objects.

Note 2 to entry: An example for domain objects includes breakers. An example for static background object includes lakes.

3.4 diagram object style definition of how to render diagram objects possibly based on the state of domain objects

Note 1 to entry: Typically, the diagram object style is resolved in a very specific way for each system.

4 Use Cases

4.1 General use cases for diagram exchange

Figure 1 shows a high-level view of using diagram layout data exchange with potential systems that can make use of the diagram layout data.

iTeh STANDARD PREVIEW
(standards.iteh.ai)

[IEC 61970-453:2014](https://standards.iteh.ai/catalog/standards/sist/344d4e47-c1ec-4812-b5d4-4cd3062a20e7/iec-61970-453-2014)

<https://standards.iteh.ai/catalog/standards/sist/344d4e47-c1ec-4812-b5d4-4cd3062a20e7/iec-61970-453-2014>

⁸ Footnote 8 applies to the French version only.

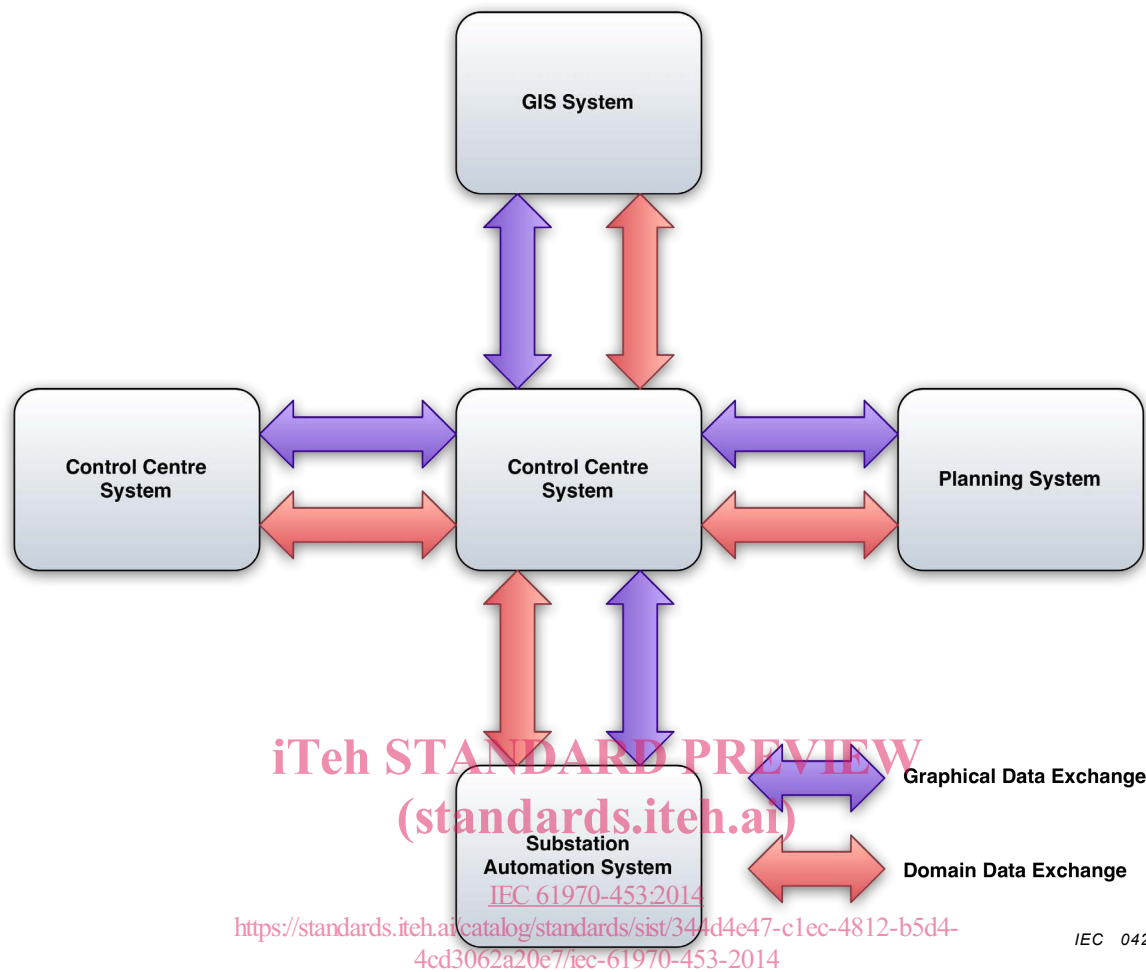


Figure 1 – System overview

An examination of the use cases for such exchanges revealed that the diagrams being exchanged are not fixed graphic presentations. Instead the diagrams vary considerably in appearance as attributes of CIM objects change, and they support important user interaction. For example, a SCADA one-line in its creator's system is supporting live control of the power system, while in a receiver's system it is merely used for reference so that a neighbour can understand what the system looks like beyond its own border. These variations are typically not easy or appropriate to map between the source and receiving systems because of the degree of difference in the way those systems are designed.

In the specification of diagrams, one common element is that the style of displaying an object of a certain kind is usually defined once and then re-used, but the placement of objects must be adjusted whenever new elements are added to the data model. This placement and maintenance of placement is where most of the labour investment takes place that users would like to preserve. As a result, this standard is limited to the exchange of diagram layouts (meaning the arrangement of CIM objects in a display space) rather than a complete exchange of all characteristics of a graphic presentation.

With this proposed standard, instead of maintaining duplicate schematics for different applications, the schematics are exported by one system and imported by the other system. Diagram layout profile is an extension to the CIM power system model exchange IEC 61970-452, and will be orchestrated along with the existing CIM XML model exchange and updates provided using the existing CIM XML Incremental file format as defined in IEC 61970-552. IEC 61970-552 also describes how payload headers provide information as to how payloads fit together.

This process can be applied for initial schematics construction as well as for continuous maintenance.

The importing system can create its graphics displays from the imported data, or the diagram layout data can serve as additional documentation and means of understanding for the domain data exchange.

4.2 Simple bay diagram example

Diagrams are constructed using different approaches. This subclause illustrates this using a simple bay drawing. Figure 2 shows a typical representation of a bay.

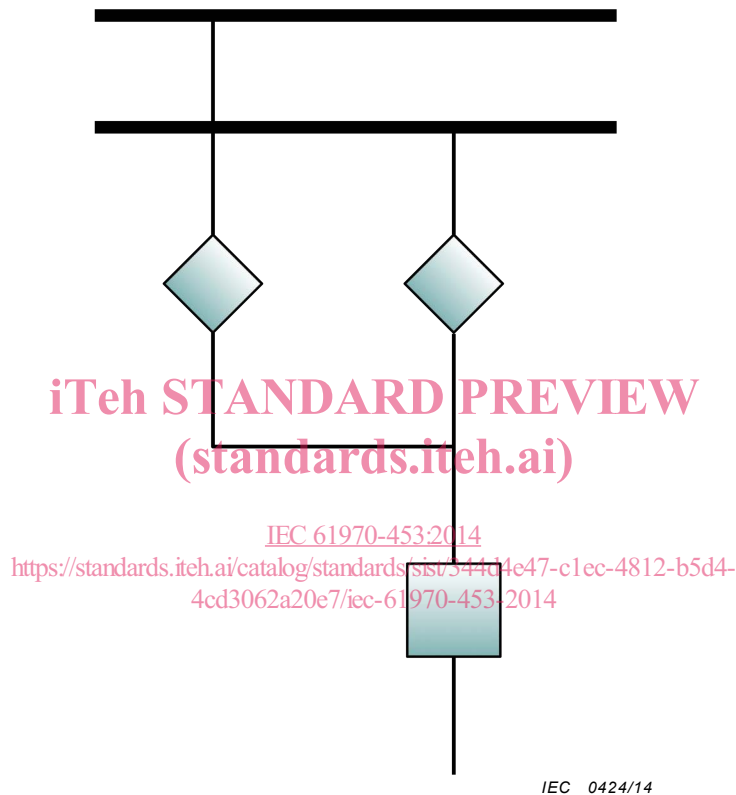


Figure 2 – Bay diagram as rendered

In a GIS system, lines are typically drawn up to the centre point of the symbol. This is shown in Figure 3 (transparent symbol is used for illustration). This construction method is independent of the symbol size, i.e. the drawing looks “pretty” even when the importing system used a smaller symbol size than the original one.

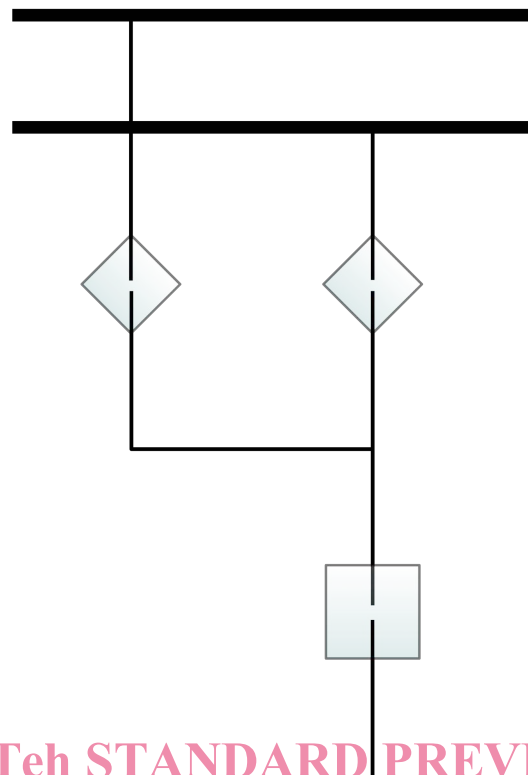


Figure 3 – Bay diagram drawn in GIS style

In a SCADA system, lines are typically drawn to align with the terminals of the object represented by the symbol. This is shown in Figure 4 (transparent symbol is used for illustration). This construction method gives a closer representation of the electrical topology, but depends on a certain symbol size.

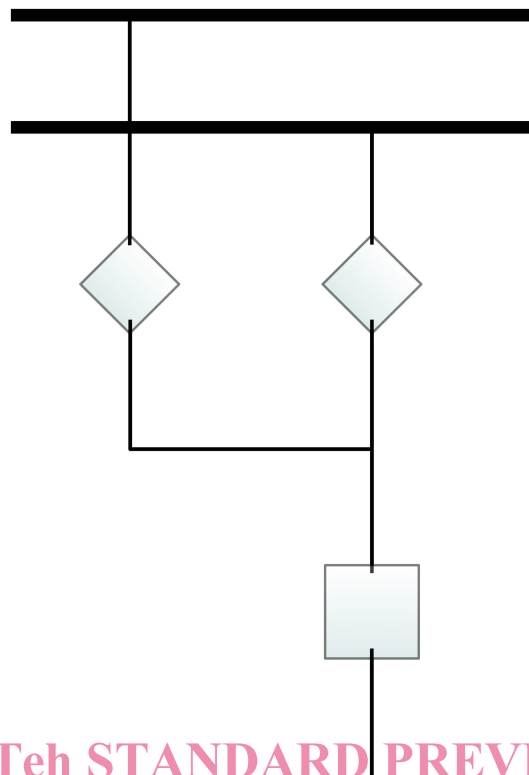


Figure 4 – Bay diagram drawn in SCADA style

5 Diagram layout exchange profile

5.1 General

Profile namespace: <http://iec.ch/TC57/61970-453/DiagramLayout/2#>

This standard specifies an exchange profile for schematics with the following characteristics.

- A generic method for linking the diagram object to the domain data. Domain data and diagram layout data can be exchanged together with the domain data, or separately from each other with the assumption that domain data will have already been imported should diagram layout data be imported separately.
- It does not require or imply a specific domain data format. Therefore, it supports domain data modelled according to the IEC 61970-301 Common information model (CIM) that is exchanged in the IEC 61970-501 format (CIM RDF schema). Diagram layout data references domain data in compliance with IEC/TR 62541-1, *OPC Unified Architecture*.
- The intended usage of this standard is that the source of a diagram will use the standard to encode the layout of their diagram as they created it. It is then incumbent upon any receiver to supply the means of using that diagram layout in their system.
 - In the simplest situation, if the source uses Switch object placements, the receiver creates a generic Switch template in the receiver's system that will be used to render Switches (i.e. there is no exchange of Switch templates).
 - In more complex situations, a 1:1 correspondence may not be desirable, and receivers may have to create generic transformations in order to use exchanges.
 - However, in both situations, it is expected that once an investment is made in a strategy for rendering, repeated imports may be carried out automatically.
- Supports the exchange of diagram objects that have no relationship to domain data, i.e., pure static background objects.

- Supports multiple representations of the same domain object in the same or different diagrams.
- Allows the diagram to be used as the unit of exchange, providing a straightforward approach to partial exchange, or an exchange between systems that have a separate model and repository for diagram layout data.
- Supports assignment of diagram objects to layers or other means, for showing or hiding information based on zoom level and/or user interest.
- A generic method for proprietary extensions to enable full round tripping (export and import back into the same system) without information loss within a system, and without breaking the standard exchange format.

5.2 Diagram layout profile classes

5.2.1 General

The diagram layout classes are a part of IEC 61970-301 and as such are associated to the domain data using the standard UML association relationship. A new sub-package in IEC 61970-301 contains the classes required for expressing schematic data for domain objects as illustrated in Figure 5.

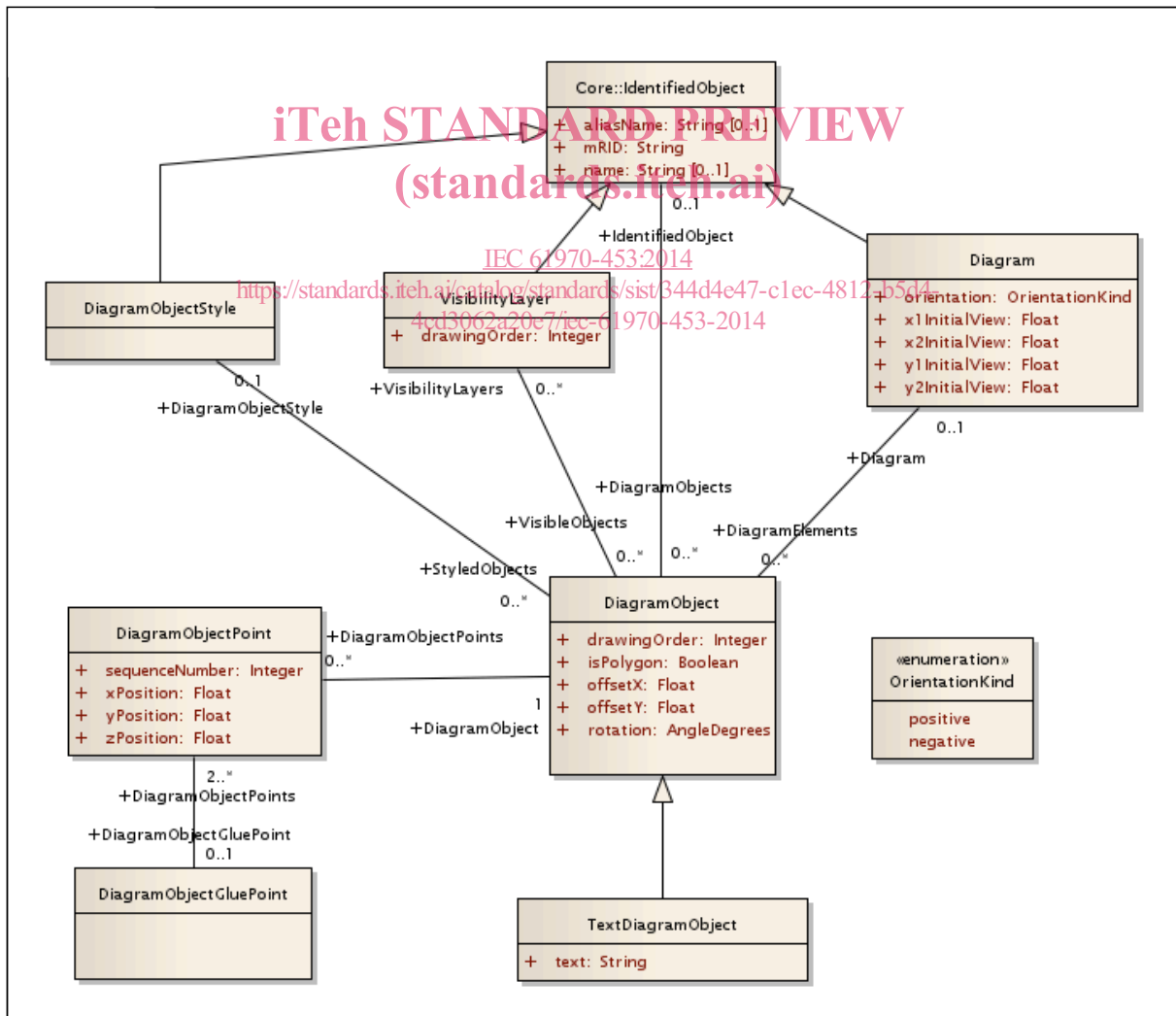


Figure 5 – Diagram layout information model