
INTERNATIONAL STANDARD



2347

INTERNATIONAL ORGANIZATION FOR STANDARDIZATION • МЕЖДУНАРОДНАЯ ОРГАНИЗАЦИЯ ПО СТАНДАРТИЗАЦИИ • ORGANISATION INTERNATIONALE DE NORMALISATION

**Automobiles — Compact spark plugs M 14 × 1,25
with conical seating**

First edition — 1973-02-15

UDC 621.43.045

Ref. No. ISO 2347-1973 (E)

Descriptors : internal combustion engines, spark plugs, dimensions

Price based on 4 pages

Automobiles – Compact spark plugs M 14 × 1,25 with conical seating

1 SCOPE

This International Standard specifies the main dimensional characteristics of a spark plug type used with spark ignition engines.

2 FIELD OF APPLICATION

The provisions of this International Standard apply to compact spark plugs M 14 × 1,25 with conical seating.

3 REQUIRED CHARACTERISTICS

3.1 Terminals (see Figure 3 and Annex)

The preferred type is the solid post terminal.

The threaded terminal with nut is permitted (see Annex).

Engine manufacturers are encouraged to introduce solid post terminals in practice.¹⁾

3.2 Dimensions and thread (see Figures 1 and 2)

3.2.1 Length dimensions

The length dimensions are measured from a gauging plane defined by the diameter $\overline{14,8}$ on the seating.

3.2.2 Dimensions of spark plug housing in the cylinder head

The length dimensions 7,9 min. and 2 max. in the cylinder head are measured from a gauging plane defined by diameter $\overline{14,8}$ on the seating.

Dimension 7,9 min. shall ensure that no threaded portion of the plug reach may enter the combustion chamber when the spark plug is tightened with the torque specified by the manufacturer.

3.2.3 Thread

3.2.3.1 Dimension limits

Dimensions in millimetres

Dimension	Plug thread (on finished plug) 6e		Tapped hole in cylinder head 6H
	Major diameter	max.	13,937
	min.	13,725	14,000
Pitch diameter	max.	13,125	13,368
	min.	12,993	13,188
Minor diameter	max.	12,404	12,912
	min.	12,181*	12,647

* With a root radius $\geq 0,125$ mm (0,1 P)

3.2.3.2 Tolerance classes

The tolerance classes of thread M 14 × 1,25 of finished spark plugs and of the corresponding tapped holes in the cylinder head are as follows :

- 6e for spark plugs (see Note 2);
- 6H for tapped holes in the cylinder head.

NOTES

1 The threads M 14 × 1,25 of the spark plugs and the corresponding tapped holes in the cylinder head shall conform with :

ISO/R 68, *ISO general purpose screw threads – Basic profile,*

ISO/R 261, *ISO general purpose metric screw threads – General plan,*

ISO/R 965/I and ISO/R 965/III, *ISO general purpose metric screw threads – Tolerances.*

1) This recommendation will be re-examined in 3 years.

Dimensions in millimetres

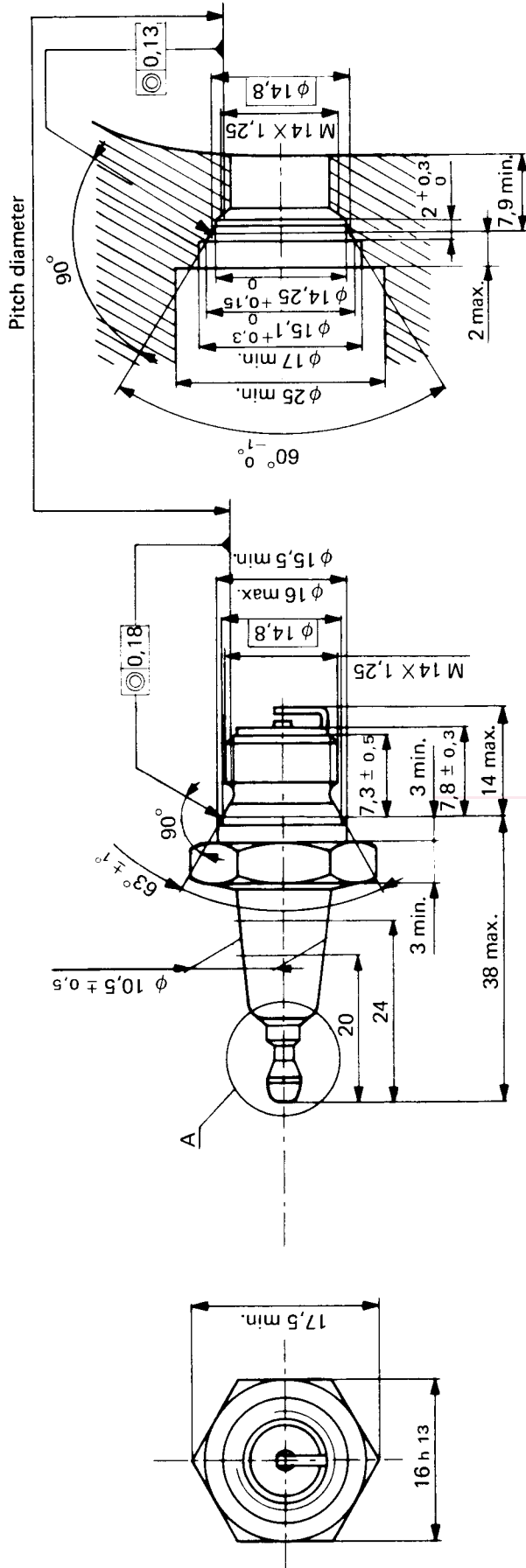


FIGURE 1 — Compact spark plug M 14 X 1,25 with conical seating

FIGURE 2 — Housing of the spark plug in the cylinder head

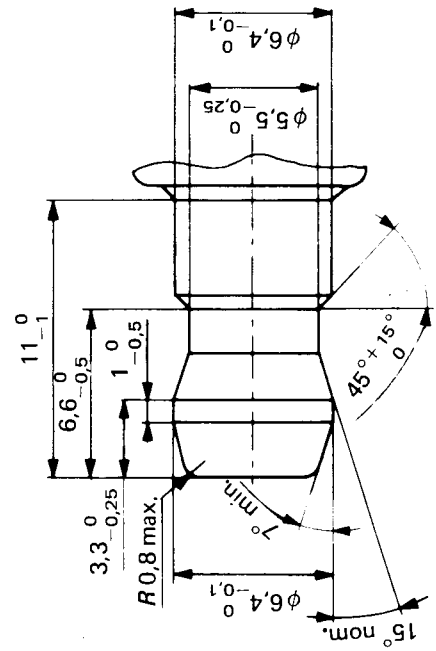


FIGURE 3 — Solid post terminal (Detail A of Figure 1)

