



SLOVENSKI STANDARD

SIST EN 33:2003

01-oktober-2003

Glavni UK 7 'ý_c`^_Ug'df][fU'Yb]a 'j cXb]a ' _ch] Ya '!'Df]_`'f bY'a YfY

Pedestal W.C. pans with close-coupled flushing cistern - Connecting dimensions

Stand-WCs mit aufgesetztem Spülkasten - Anschlussmaße

Cuvettes de W.-C. sur pied a chasse directe et réservoir attenant - Cotes de raccordement

iTeh STANDARD PREVIEW
(standards.iteh.ai)

[SIST EN 33:2003](https://standards.iteh.ai/catalog/standards/sist/ch3c4aa5-2c91-4b39-95b0-69cabc5288d1/sist-en-33-2003)

Ta slovenski standard je istoveten z:

EN 33:2003

ICS:

91.140.70

Sanitarne naprave

Sanitary installations

SIST EN 33:2003

en

iTeh STANDARD PREVIEW **(standards.iteh.ai)**

SIST EN 33:2003

<https://standards.iteh.ai/catalog/standards/sist/cb3c4aa5-2c91-4b39-95b0-69eabe3288d1/sist-en-33-2003>

English version

Pedestal W.C. pans with close-coupled flushing cistern -
Connecting dimensions

Cuvettes de W.-C. sur pied à chasse directe et réservoir
attenant - Cotes de raccordement

Bodenstehende Klosettbecken mit aufgesetztem
Spülkasten - Anschlussmaße

This European Standard was approved by CEN on 9 January 2003.

CEN members are bound to comply with the CEN/CENELEC Internal Regulations which stipulate the conditions for giving this European Standard the status of a national standard without any alteration. Up-to-date lists and bibliographical references concerning such national standards may be obtained on application to the Management Centre or to any CEN member.

This European Standard exists in three official versions (English, French, German). A version in any other language made by translation under the responsibility of a CEN member into its own language and notified to the Management Centre has the same status as the official versions.

CEN members are the national standards bodies of Austria, Belgium, Czech Republic, Denmark, Finland, France, Germany, Greece, Hungary, Iceland, Ireland, Italy, Luxembourg, Malta, Netherlands, Norway, Portugal, Slovakia, Spain, Sweden, Switzerland and United Kingdom.

iTeh STANDARD PREVIEW
(standards.iteh.ai)
<https://standards.iteh.ai/catalog/standards/sist/cb3c4aa5-2c91-4b39-95b0-69eabe3288d1/sist-en-33-2003>



EUROPEAN COMMITTEE FOR STANDARDIZATION
COMITÉ EUROPÉEN DE NORMALISATION
EUROPÄISCHES KOMITEE FÜR NORMUNG

Management Centre: rue de Stassart, 36 B-1050 Brussels

Contents

	page
Foreword	3
1 Scope.....	4
2 Connecting dimensions	4
3 Fixing dimensions for the seat	8

iTeh STANDARD PREVIEW
(standards.iteh.ai)

SIST EN 33:2003
<https://standards.iteh.ai/catalog/standards/sist/cb3c4aa5-2c91-4b39-95b0-69eabe3288d1/sist-en-33-2003>

Foreword

This document (EN 33:2003) has been prepared by Technical Committee CEN/TC 163, "Sanitary appliances", the secretariat of which is held by UNI.

This European Standard shall be given the status of a national standard, either by publication of an identical text or by endorsement, at the latest by October 2003, and conflicting national standards shall be withdrawn at the latest by October 2003.

This document supersedes EN 33:1998.

This revised version considers new market trends and compared to the version of November 1998 includes the following amendments: Dimension q_2 is changed.

According to the CEN/CENELEC Internal Regulations, the national standards organizations of the following countries are bound to implement this European Standard: Austria, Belgium, Czech Republic, Denmark, Finland, France, Germany, Greece, Hungary, Iceland, Ireland, Italy, Luxembourg, Malta, Netherlands, Norway, Portugal, Slovakia, Spain, Sweden, Switzerland and the United Kingdom.

iTeh STANDARD PREVIEW (standards.iteh.ai)

SIST EN 33:2003

<https://standards.iteh.ai/catalog/standards/sist/cb3c4aa5-2c91-4b39-95b0-69eabe3288d1/sist-en-33-2003>

1 Scope

This European Standard specifies the connecting dimensions of pedestal W.C. pans with close-coupled flushing cistern having an exposed outlet on the horizontal or vertical axis or a concealed outlet, regardless of the materials used for their manufacture.

This standard is not applicable to siphonic action W.C. pans.

NOTE Only the dimensions are compulsory. The shape of the appliance in the Figures is for illustration only; it in no way prejudices the final shape of the appliance, which is left to the initiative of the manufacturer.

2 Connecting dimensions

The connecting dimensions of outlets of pedestal W.C. pans with close-coupled flushing cistern shall comply with the dimensions given in Tables 1 to 5.

Table 1 — Basic connecting dimensions (see Figures 1 to 4)

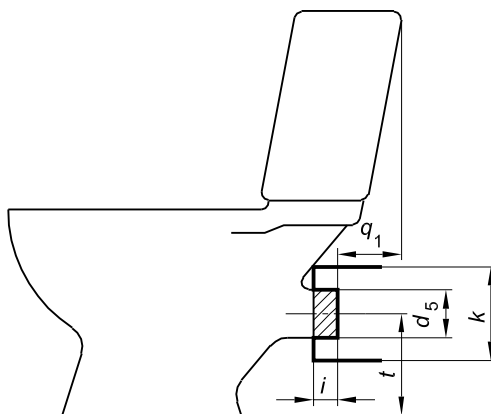
Designation	Symbol	Dimensions mm
External diameter of the outlet	d_s	102 ± 5
External cylindrical part of the outlet without grooves	i	≥ 40
Diameter of the free space around the outlet	k	≥ 150

[SIST EN 33:2003](https://standards.iteh.ai/catalog/standards/sist/cb3c4aa5-2c91-4b39-95b0-69eabe3288d1/sist-en-33-2003)

<https://standards.iteh.ai/catalog/standards/sist/cb3c4aa5-2c91-4b39-95b0-69eabe3288d1/sist-en-33-2003>

Table 2 — W.C. pans with horizontal outlet (see Figure 1)

Designation	Symbol	Dimensions mm
Distance between the centre line of the outlet and the base of the appliance	t	180^{+15}_{-10}
Distance between the vertical planes passing through the end of the outlet and that part of the combination nearest to the wall	q_1	140 ± 25



iTeh STANDARD PREVIEW

Figure 1 — W.C. pan with exposed horizontal outlet

Table 3 — W.C. pans with concealed horizontal outlet (see Figure 2)

Designation	Symbol	Dimensions mm
Distance between the centre line of the outlet and the base of the appliance	t	180^{+15}_{-10}
Distance between the vertical plane passing through the end of the outlet and that part of the combination nearest to the wall	q_2	≥ 115

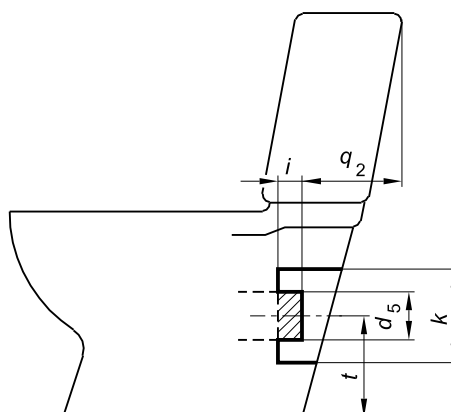
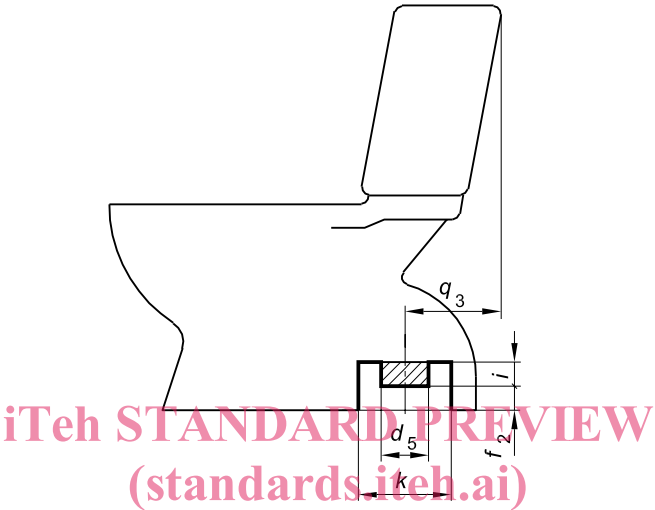


Figure 2 — W.C. pan with concealed horizontal outlet

Table 4 — W.C. pans with concealed vertical outlet (see Figure 3)

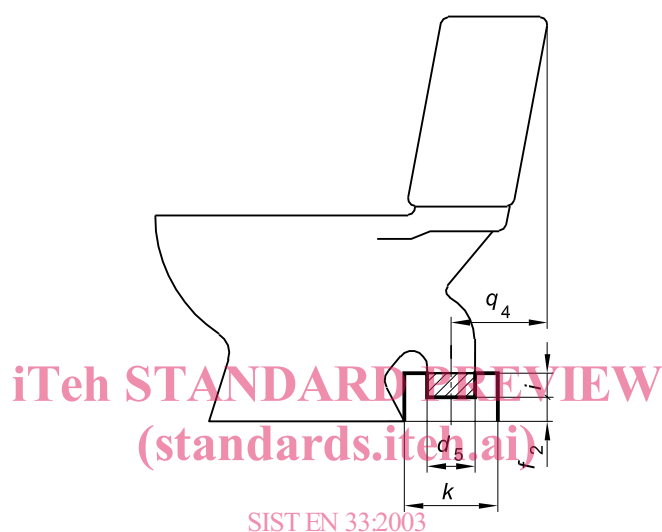
Designation	Symbol	Dimensions mm
Distance from the plane passing through the end of the outlet and the base of the appliance	f_2	≥ 10
Distance from the centre line of the outlet the vertical plane passing through that part of the combination nearest to the wall	q_3	120 ± 25
		225 ± 25



SIST EN 33:2003
Figure 3 — W.C. pan with concealed vertical outlet
<https://standards.iteh.ai/catalog/standards/sist/c65c4aa3-2c91-4659-95b0-69eabe3288d1/sist-en-33-2003>

Table 5 — W.C. pans with exposed S-trap (see Figure 4)

Designation	Symbol	Dimensions mm
Distance from the plane passing through the end of the outlet and the base of the appliance	f_2	≥ 10
Distance from the centre line of the outlet the vertical plane passing through that part of the combination nearest to the wall	q_4	75 ± 15
		120 ± 25
		225 ± 25



SIST EN 33:2003
<https://standards.iteh.ai/catalog/standards/sist/cb3c4aa5-2c91-4b39-95b0-6094e3288d11/sist-en-33-2003>
 Figure 4 — W.C. pan with exposed vertical outlet