



**SLOVENSKI STANDARD**  
**SIST EN 1888:2003/A3:2006**

**01-februar-2006**

---

Child care articles - Wheeled child conveyances - Safety requirements and test methods  
8 cdc`b]c`5'

Child care articles - Wheeled child conveyances - Safety requirements and test methods

Artikel für Säuglinge und Kleinkinder - Transportmittel auf Rädern für Kinder -  
Sicherheitstechnische Anforderungen und Prüfungen

(standards.iteh.ai)

Articles de puériculture - Voitures d'enfant - Exigences de sécurité et méthodes d'essai

<https://standards.iteh.ai/catalog/standards/sist/89ee5b71-ccb9-4ed7-9d12-f97de7c596fc/sist-en-1888-2003-a3-2006>

Ta slovenski standard je istoveten z: **EN 1888:2003/A3:2005**

---

**ICS:**

97.190      Otroška oprema      Equipment for children

**SIST EN 1888:2003/A3:2006**      en,fr,de

**iTeh STANDARD PREVIEW**  
**(standards.iteh.ai)**

SIST EN 1888:2003/A3:2006

<https://standards.iteh.ai/catalog/standards/sist/89ee5b71-ccb9-4ed7-9d12-f97de7c596fc/sist-en-1888-2003-a3-2006>

EUROPEAN STANDARD  
NORME EUROPÉENNE  
EUROPÄISCHE NORM

**EN 1888:2003/A3**

August 2005

ICS 97.190

English Version

## Child care articles - Wheeled child conveyances - Safety requirements and test methods

Articles de puériculture - Voitures d'enfant - Exigences de sécurité et méthodes d'essai

Artikel für Säuglinge und Kleinkinder - Transportmittel a für Rädern für Kinder - Zusätzliche Gefahren des Einklemmens

This amendment A3 modifies the European Standard EN 1888:2003; it was approved by CEN on 1 July 2005.

CEN members are bound to comply with the CEN/CENELEC Internal Regulations which stipulate the conditions for inclusion of this amendment into the relevant national standard without any alteration. Up-to-date lists and bibliographical references concerning such national standards may be obtained on application to the Central Secretariat or to any CEN member.

This amendment exists in three official versions (English, French, German). A version in any other language made by translation under the responsibility of a CEN member into its own language and notified to the Central Secretariat has the same status as the official versions.

CEN members are the national standards bodies of Austria, Belgium, Cyprus, Czech Republic, Denmark, Estonia, Finland, France, Germany, Greece, Hungary, Iceland, Ireland, Italy, Latvia, Lithuania, Luxembourg, Malta, Netherlands, Norway, Poland, Portugal, Slovakia, Slovenia, Spain, Sweden, Switzerland and United Kingdom.

[SIST EN 1888:2003/A3:2006](https://standards.iteh.ai/catalog/standards/sist/89ee5b71-ccb9-4ed7-9d12-f97de7c596fc/sist-en-1888-2003-a3-2006)

<https://standards.iteh.ai/catalog/standards/sist/89ee5b71-ccb9-4ed7-9d12-f97de7c596fc/sist-en-1888-2003-a3-2006>



EUROPEAN COMMITTEE FOR STANDARDIZATION  
COMITÉ EUROPÉEN DE NORMALISATION  
EUROPÄISCHES KOMITEE FÜR NORMUNG

Management Centre: rue de Stassart, 36 B-1050 Brussels

**EN 1888:2003/A3:2005 (E)****Foreword**

This document (EN 1888:2003/A3:2005) has been prepared by Technical Committee CEN/TC 252 "Child use and care articles", the secretariat of which is held by AFNOR.

This Amendment to the European Standard EN 1888:2003 shall be given the status of a national standard, either by publication of an identical text or by endorsement, at the latest by February 2006, and conflicting national standards shall be withdrawn at the latest by February 2006.

According to the CEN/CENELEC Internal Regulations, the national standards organizations of the following countries are bound to implement this European Standard: Austria, Belgium, Cyprus, Czech Republic, Denmark, Estonia, Finland, France, Germany, Greece, Hungary, Iceland, Ireland, Italy, Latvia, Lithuania, Luxembourg, Malta, Netherlands, Norway, Poland, Portugal, Slovakia, Slovenia, Spain, Sweden, Switzerland and United Kingdom.

**iTeh STANDARD PREVIEW**  
**(standards.iteh.ai)**

[SIST EN 1888:2003/A3:2006](https://standards.iteh.ai/catalog/standards/sist/89ee5b71-ccb9-4ed7-9d12-f97de7c596fc/sist-en-1888-2003-a3-2006)

<https://standards.iteh.ai/catalog/standards/sist/89ee5b71-ccb9-4ed7-9d12-f97de7c596fc/sist-en-1888-2003-a3-2006>

Add:

#### 4.5.4 Test ball

Sphere with a hard smooth surface of 120 mm diameter and 5 kg weight.

### 6.1.2 Entrapment

#### 6.1.2.1 Requirements

Add:

c) when tested according to 6.1.2.4, if the small torso probe passes through the gap between the handle and the pram body, the large head probe shall also pass through.

This requirement is only applicable to pram bodies where the internal length is greater than 800 mm

Add:

#### 6.1.2.4 Entrapment between the handle and the pram body

##### 6.1.2.4.1 Test equipment

a) small torso probe

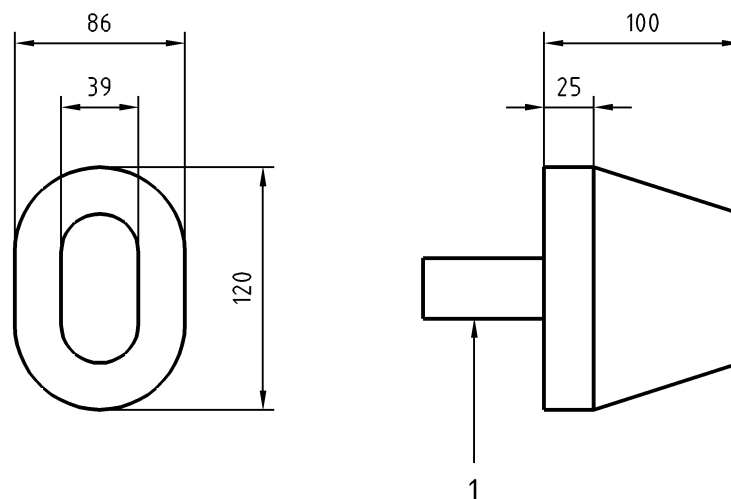
(representing 6 - 9 months children)

**iTeh STANDARD PREVIEW**  
(standards.iteh.ai)

Probe made of hard smooth material, with dimensions as shown in Figure 6.1.2.4.1a).

<https://standards.iteh.ai/catalog/standards/sist/89ee5b71-ccb9-4ed7-9d12-f97de7c596fc/sist-en-1888-2003-a3-2006>

Dimensions in millimetres



#### Key

1 Handgrip

Figure 6.1.2.4.1a) - Small torso probe

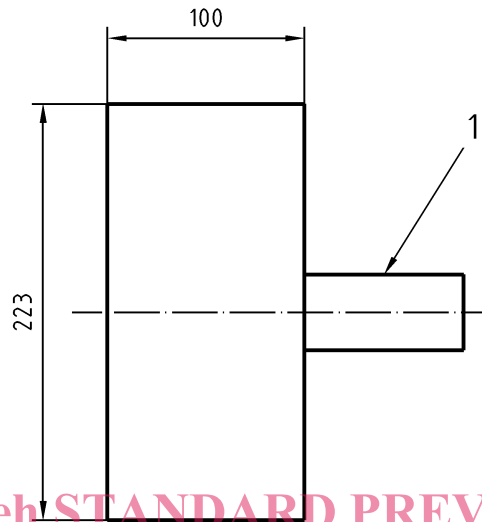
**EN 1888:2003/A3:2005 (E)**

b) large head probe

(representing 24 - 36 months children)

Probe made of hard smooth material, with dimensions as described in Figure 6.1.2.4.1b).

Dimensions in millimetres



**iTeh STANDARD PREVIEW**  
**(standards.iteh.ai)**

**Key**

1 Handgrip

SIST EN 1888:2003/A3:2006  
<https://standards.iteh.ai/catalog/standards/sist/89ee5b71-ccb9-4ed7-9d12-f97de7c596f/sist-en-1888-2003-a3-2006>  
**Figure 6.1.2.4.1b) – Large head probe**

#### 6.1.2.4.2 Test procedure

Check whether the small torso probe can pass through the gap between the handle and the end of the pram body, applying a force up to 90 N.

Check if the large head probe passes through the opening when pushed along the axis of the handgrip, with a force not exceeding 5 N.

Add:

#### 6.1.8 Attachment of textile parts with child retention purpose

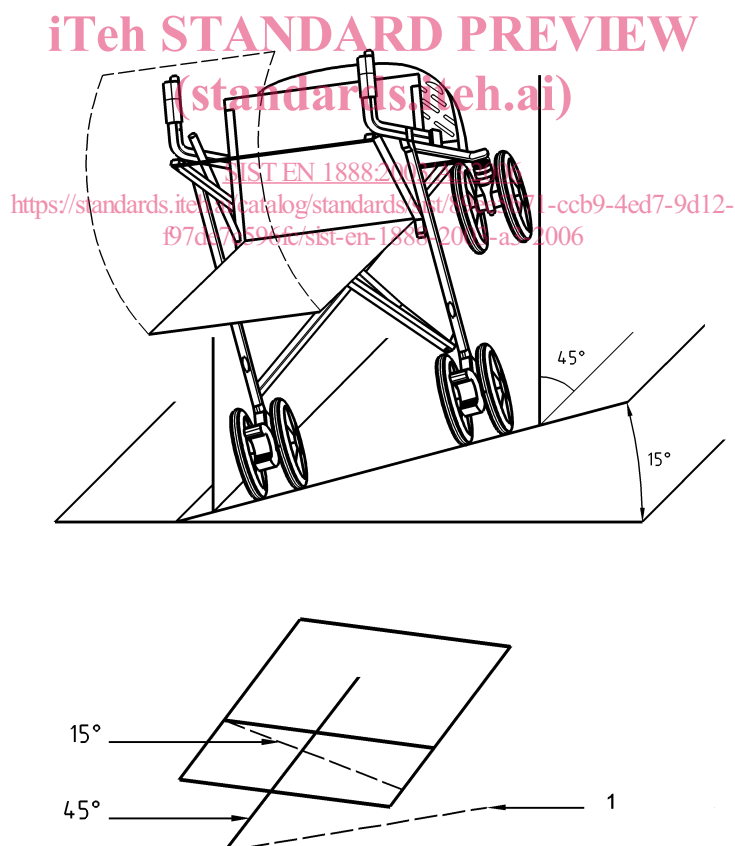
##### 6.1.8.1 Requirements

Any textile parts, whose function is essential for the retention of the child, shall not allow the test ball to fall from the seat unit when tested according to 6.1.8.2.

##### 6.1.8.2 Test

Recline the backrest of the seat unit to the most reclined position. Attach, according to the manufacturer's instructions, the textile parts intended to retain the child (including the rear part of hoods and aprons).

Fix the vehicle to a plane inclined to  $45^\circ$  with respect to the horizontal and to  $15^\circ$  with respect to the perpendicular direction of the longitudinal axis considered when inclining the plane to  $45^\circ$  (see Figure 6.1.8.2).



*Right hand line drawing deleted*

#### Key

1 Horizontal

**Figure 6.1.8.2 - Retention test**

The vehicle shall be placed along the longitudinal axis of the plane.

**EN 1888:2003/A3:2005 (E)**

Place the test ball (4.5.4) on the centre of the junction of the seat unit and the backrest of the product down the slope of 15°; let the ball roll freely.

Record whether the test ball falls out of the seat unit.

Repeat the procedure but with the inclination of the plane of 15° to the opposite side of the longitudinal axis.

Repeat the procedure without inclining the plane at 15° but simply reclined at 45°.

**iTeh STANDARD PREVIEW**  
**(standards.iteh.ai)**

[SIST EN 1888:2003/A3:2006](https://standards.iteh.ai/catalog/standards/sist/89ee5b71-ccb9-4ed7-9d12-f97de7c596fc/sist-en-1888-2003-a3-2006)

<https://standards.iteh.ai/catalog/standards/sist/89ee5b71-ccb9-4ed7-9d12-f97de7c596fc/sist-en-1888-2003-a3-2006>